

**2012 BETTER HYBRIDS Harvest Report for Indiana North [ INNO ]**  
 Bruce & Vernon Furrer, White County, IN 47995 [ WOLCOTT ]

**EARLY SEASON TEST**  
**103 - 108 Day CRM**

PREV. CROP/HERB: Wheat B2INNO06a  
 SOIL DESCRIPTION: Silt loam, well drained, conventional w/ fall till, non-irrigated  
 SOIL CONDITION: High P, high K, 6.4 pH, 2.3% OM  
 PEST MANAGEMENT: Atrazine, Glyphosate, Force 30" ROW SPACING  
 FERTILITY - Applied N: 78 Spring, 5 Planter, 60 Side  
 Applied N-P-K (units): 143-46-0  
 SEEDING - RATE: Apr 18 34,200 /A TOP 30 OF 36 FOR GROSS INCOME (SORTED BY YIELD)  
 HARVESTED - STAND: Sep 22 32,700 /A AVERAGE of (3) REPLICATIONS

Company/Brand	Product/Brand†	Technol.†	Seed Treatment†	RM	Yield Bu/A	Moisture %	Lodging %	Stand (x 1000)	Gross Income \$/Acre	Rank
LG Seeds	LG5533VT3Pro	VT3P	AC,P5V	107	180.2	17.6	1	34.9	1,340	1
NuTech	5B-604	GT/CB/LL	MQ,R,C2	104	173.4	17.5	1	33.5	1,290	2
G2 Genetics	5Z-008^	OI,RR2	MQ,R,P1V	108	167.8	19.2	0	32.2	1,241	4
G2 Genetics	5H-0504^	HX,RR2	MQ,R,P1V	105	167.4	18.4	0	32.9	1,241	3
Partners Brand	PB 7632GT/CB/LL	GT/CB/LL	CE,C2,Pr	106	164.6	17.7	1	32.9	1,223	5
Specialty	83R90GENSSRIB	STX-R	AC,P5V	105	157.0	17.9	1	33.5	1,166	6
Seed Consultants	SCS 10HQ72^	HXT,RR2	MQ,R,P1V	107	154.7	19.6	0	32.2	1,145	7
Ebberts	7909VT3P	VT3P	AC,P5	108	154.5	20.5	1	33.5	1,138	9
Partners Brand	PB 7895RR	RR2	AC,P5V	108	154.3	18.3	1	30.8	1,145	8
Ebberts	9501SS	STX	AC,P5	109	153.2	19.7	1	34.2	1,131	10
AgriGold	A6389VT3Pro	VT3P	AC,P5V	105	151.5	18.7	0	33.5	1,122	11
AgriGold	A6384VT3Pro	VT3P	AC,P5V	106	149.7	20.4	1	32.9	1,103	13
G2 Genetics	5Z-407^	OI,RR2	MQ,R,P1V	107	149.2	18.2	2	33.5	1,107	12
Specialty	4383GENVT3P	VT3P	AC,P5V	105	146.8	19.2	2	33.5	1,086	14
Great Lakes	5785VT3PRO	VT3P	AC,P5V	107	145.7	18.8	1	30.8	1,079	16
AgriGold	A6408VT3Pro	VT3P	AC,P5V	107	145.6	17.6	3	32.9	1,083	15
Stine	9529VT3Pro	VT3P	AC,P2	107	142.7	18.1	1	32.9	1,059	17
Stewart	6V556	VT3P	AC,P5V	107	140.9	18.6	0	32.9	1,044	18
Seed Consultants	SCS 1087AMX^	AMX,RR2	MQ,C2	108	140.5	22.4	1	31.5	1,028	20
NK Brand	N61P-3000GT	3000GT	CE,C2	107	139.4	21.2	0	32.9	1,024	21
Great Lakes	5368VT3PRO	VT3P	AC,P5V	103	138.2	17.3	1	32.9	1,029	19
LG Seeds	LG2529VT3Pro	VT3P	AC,P5V	107	137.8	20.3	1	32.2	1,015	23
Garst	85V88-3000GT	3000GT	CE,C2	107	137.7	21.7	1	32.9	1,010	25
Partners Brand	PB 7559PR	RR2	CE,C2,Pr	105	137.3	17.6	1	30.9	1,021	22
Dyna-Gro	CX48VP76	VT3P	AC,P5V	108	136.6	17.8	1	32.9	1,015	24
Stewart	6V629	VT3P	AC,P5V	107	131.0	18.7	2	30.2	970	26
Specialty	4385GENVT3P	VT3P	AC,P5V	106	130.2	17.9	1	34.9	967	27
Golden Harvest	H-8211 3000GT	3000GT	CE,C2	105	122.1	19.0	0	30.8	904	28
Seed Consultants	SCS 10HR62^	HX,RR2	MQ,P1V	106	120.8	19.3	0	33.5	893	29
Stewart	5A988RIB	STX-R	AC,P2	103	114.8	17.8	1	31.5	853	30
Ebberts	9307SS CK	STX	AC,P5	107	109.1	18.8	1	31.5	808	32
Test Average =					137.7	18.9	1	32.7	1,020	
LSD (0.10) =					44.7	1.5	1			
C.V. =					23.8	5.9				

*Rich W. Lehmann*  
 F.I.R.S.T. Manager

**TEST COMMENTS:** Extreme heat and dryness will bring out the trouble spots. Soil compaction from lime applied 6 years ago reduced yields. Two early test reps (test rejected) and 1 full test rep (dropped) were impacted. In heavily compacted areas, ears ranged from barren to 12 kernels round and 14 long. In good areas, some poor pollination, ear tipback, slight stalk lodging & rust noted. Lat: 40.77913, Long: -86.9626

Yield & Income Factors: Base Moisture = 15.0% Shrink = 1.3 Drying = \$0.025 Price = \$7.50

† See last page for Product/Brand, Technology and Seed Treatment information.
→ Identifies the check brand included in early- and full-season tests. <b>Bold</b> yields are significantly above test average. <b>Italicized</b> brands exceed the grain moisture limit for this test. <b>GC</b> = grower comparison product, <b>ns</b> = not significantly different

**2012 BETTER HYBRIDS Harvest Report for Indiana North [ INNO ]**  
 Bruce & Vernon Furrer, White County, IN 47995 [ WOLCOTT ]

**FULL SEASON TEST**  
**109 - 112 Day CRM**

B2INNO06b

 PREV. CROP/HERB: Wheat  
 SOIL DESCRIPTION: Silt loam, well drained, conventional w/ fall till, non-irrigated  
 SOIL CONDITIONS: High P, high K, 6.4 pH, 2.3% OM  
 PEST MANAGEMENT: Atrazine, Glyphosate, Force  
 FERTILITY - Applied N: 78 Spring, 5 Planter, 60 Side  
 Applied N-P-K (units): 143-46-0

30" ROW SPACING

 SEEDED - RATE: Apr 18 34,200 /A  
 HARVESTED - STAND: Sep 22 33,400 /A

**TOP 30 OF 48 FOR GROSS INCOME (SORTED BY YIELD)**  
 AVERAGE of (2) REPLICATIONS

Company/Brand	Product/Brand†	Technol.†	Seed Treatment†	RM	Yield Bu/A	Moisture %	Lodging %	Stand (x 1000)	Gross Income \$/Acre	Rank
Ebberts	7222VT3P	VT3P	AC,P5	112	<b>231.3</b>	23.0	0	34.2	1,689	1
Ebberts	7712VT3P	VT3P	AC,P5	112	<b>230.8</b>	23.9	1	34.2	1,680	2
LG Seeds	LG2602VT3Pro	VT3P	AC,P5V	112	<b>222.8</b>	22.8	0	34.2	1,628	3
Stewart	7V747	VT3P	AC,P5V	110	209.4	22.0	0	31.2	1,534	4
Channel	211-99VT3P	VT3P	AC,P5V	111	204.1	20.6	5	33.2	1,502	6
AgriGold	A6458VT3	VT3	AC,P5V	109	204.0	19.8	1	33.2	1,506	5
Garst	85E98-3000GT	3000GT	CE,C2	109	202.3	19.9	0	32.2	1,493	7
Seed Consultants	SC 10AGT92	GT/CB/LL	MQ,P1V	109	201.8	22.2	0	35.2	1,477	8
Dyna-Gro	CX52VP91	VT3P	AC,P5V	112	201.4	23.2	0	33.2	1,469	9
G2 Genetics	5H-309^	HX,RR2	MQ,R,P1V	109	200.4	21.8	0	32.2	1,469	10
NK Brand	N70J-4011	4011	CE,C2	112	198.6	21.7	0	33.2	1,456	11
Specialty	8656GENVT3P	VT3P	AC,P5V	111	198.6	22.3	1	34.2	1,453	12
Specialty	4640GENVT3P	VT3P	AC,P5V	111	198.1	21.7	1	34.2	1,453	13
G2 Genetics	5Z-1205^	OI,RR2	MQ,R,P1V	112	196.4	21.5	0	34.2	1,441	14
Golden Harvest	H-8969 3122	3122	CE,C2	111	196.4	21.6	1	34.2	1,441	15
Dairyland	DS9111SSX	STX	AVC,C2	111	196.0	21.2	1	34.2	1,440	16
Specialty	4611GENVT3P	VT3P	AC,P5V	110	195.1	20.5	1	35.2	1,436	17
NuTech	5B-410	GT/CB/LL	MQ,R,C2	110	194.2	20.4	1	35.2	1,430	18
Dairyland	DS9610	3000GT	MQ,C2	110	193.3	20.8	1	34.2	1,422	19
AgriGold	A6517VT3Pro	VT3P	AC,P5V	113	193.1	22.5	0	32.2	1,412	21
LG Seeds	LG2549VT3	VT3	AC,P5V	109	192.8	21.0	1	32.2	1,417	20
Specialty	4608GENVT3P	VT3P	AC,P5V	109	191.6	21.2	1	32.2	1,407	22
Stine	9732VT3Pro	VT3P	AC,P2	111	191.4	23.5	0	32.2	1,395	24
Stine	9731VT3Pro	VT3P	AC,P2	110	190.7	20.4	3	34.2	1,405	23
Garst	84J30-3111	3111	CE,C2	112	190.1	26.1	0	33.2	1,373	29
Unity	5512SS	STX	MQ,C2	112	189.6	23.4	0	32.2	1,382	27
LG Seeds	LG2575VT3Pro	VT3P	AC,P5V	110	189.5	21.9	1	34.2	1,389	26
Dairyland	DS9210SSX	STX	AVC,C2	110	189.2	21.2	1	32.2	1,390	25
Dyna-Gro	D51VP32	VT3P	AC,P5V	111	187.7	21.8	1	31.2	1,376	28
Ebberts	6292VT2P	VT2P	AC,P5	112	187.5	23.7	1	34.2	1,366	31
<b>Ebberts</b>	<b>9307SS CK</b>	<b>STX</b>	<b>AC,P5</b>	<b>107</b>	<b>184.6</b>	<b>18.3</b>	<b>1</b>	<b>33.2</b>	<b>1,369</b>	<b>30</b>
Test Average =					<b>190.1</b>	<b>21.8</b>	<b>0</b>	<b>33.4</b>	<b>1,393</b>	
LSD (0.10) =					20.3	1.6	2			
C.V. =					6.4	4.5				

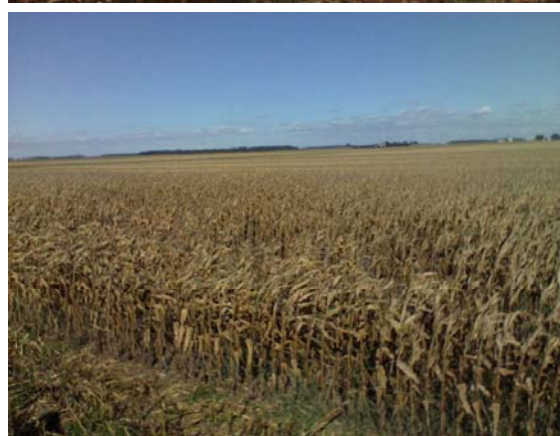
  
 F.I.R.S.T. Manager

**TEST COMMENTS:** *Extreme heat and dryness will bring out the trouble spots. Soil compaction from lime applied 6 years ago reduced yields. Two early test reps (test rejected) and 1 full test rep (dropped) were impacted. In heavily compacted areas, ears ranged from barren to 12 kernels round and 14 long. In good areas, some poor pollination, ear tipback, slight stalk lodging & rust noted.* Lat: 40.77913, Long: -86.9626

Yield &amp; Income Factors: Base Moisture = 15.0% Shrink = 1.3 Drying = \$0.025 Price = \$7.50

 † See last page for Product/Brand, Technology and Seed Treatment information.  
 → Identifies the check brand included in early- and full-season tests. **Bold** yields are significantly above test average. **Italicized** brands exceed the grain moisture limit for this test. **GC** = grower comparison product, **ns** = not significantly different

**2012 IMAGES from Indiana North [ INNO ] Better Hybrids Location - WOLCOTT**



**IMAGE COMMENTS:** *As indicated in the test comments, soil compaction was very evident in areas of this location. The pictures above try to show the compacted areas where corn growth and yield was vastly inferior to adjacent non-compacted soil areas. Note the barren stalks in the bottom picture.*

---

---

---

---



## Footnotes, Abbreviations, and Trademarks

### Brand Footnotes

^ G2® brand seed is distributed by NuTech Seed, LLC. HPT® brand seed is distributed by Hoegemeyer Hybrids, Inc. RPM® brand seed is distributed by Doebler's PA Hybrids, Inc. Supreme EX® brand seed is distributed by Seed Consultants, Inc. VPMMaxx® brand seed is distributed by AgVenture, Inc. XL® and Phoenix® brand seed is distributed by Beck's Superior Hybrids. Curry®, G2®, HPT®, RPM®, Supreme EX®, VPMMaxx® and XL® are registered trademarks of DuPont Pioneer.

### Technologies

3111	Agrisure® Viptera™ 3111
3122	Agrisure® 3122
4011	Agrisure® 4011
3000GT	Agrisure® 3000GT
AM1	Optimum® AcreMax® 1
AMX	Optimum® AcreMax® Xtra
CB/LL	Agrisure® CB/LL
CB/LL/RW	Agrisure® CB/LL/RW
Conv	Conventional, non-GMO
GT	Agrisure® GT
GT/CB/LL	Agrisure® GT/CB/LL
HX	HERCULEX® I Insect Protection
HXT	HERCULEX® XTRA Insect Protection
LL	LibertyLink®
OI	Optimum® Intrasect™
RR	Roundup Ready® Soybeans
RR2	Roundup Ready® Corn 2
RR2Y	Genuity® Roundup Ready 2 Yield®
STS	STS® - sulfonylurea tolerant soybeans
STX	SmartStax®
STX-R	SmartStax® Refuge Corn Blend
VT2P	Genuity® VT Double PRO®
VT2P-R	Genuity® VT Double PRO® RIB Corn Blend
VT3	YieldGard VT Triple®
VT3P	Genuity® VT Triple PRO®
VT3P-R	Genuity® VT Triple PRO® RIB Corn Blend

### Seed Treatments

A	Allegiance®
Ac	Acceleron® Products
Am	ApronMaxx®
Ap	Apron XL®
Avc	Avicta® Complete Corn
C2, C5, C1	Cruiser® at 0.25, 0.5 and 1.25 mg ai/seed
Ce	Cruiser® Extreme
CMB	CruiserMaxx® Beans
D	Dynasty®
Es	Escalate®
Ex	Excalibre™
G	Gaucho®
I	Inovate™ System
Mq	Maxim® Quattro
Mx	Maxim® XL
None	untreated
O	Optimize®
P2, P5, P1	Poncho® at 0.25, 0.5 and 1.25 mg ai/seed
Pr	Protinus™
R	Raxil®
Rc	Rancona®
S	Stamina®
SDPI	Servo™ DPI
SS+	SoyShield™ Plus
SStd	SureStand™
T	Trilex®
T2	Trilex® 2000
T6	Trilex® 6000
Th	thiabendazole
V	VOTIVO®
Z	zinc

### Trademarks

- Excalibre™ is a trademark of Advanced Biological Marketing
- Allegiance®, Gaucho®, LibertyLink®, Poncho®, Raxil®, Trilex®, and VOTIVO™ are trademarks of Bayer AG.
- Stamina® is a trademark of BASF
- Escalate® is a trademark of Beck's Superior Hybrids, Inc.
- Rancona® is a trademark of Chemtura Corporation.
- Herculex® is a trademark of Dow AgroSciences LLC.
- STS® is a trademark of E.I. DuPont Nemours & Co.
- Optimize® is a trademark of EMD Crop BioScience Inc.
- SoyShield™ Plus is a trademark of Latham Hi-Tech Seeds
- Acceleron®, Genuity®, Roundup Ready®, Roundup Ready 2 Yield®, SmartStax®, VT Double PRO®, VT Triple PRO®, and YieldGard VT Triple® are trademarks of Monsanto Technology LLC.
- Servo DPI™ is a trademark of Ohlde Seed.
- AcreMax®, Intrasect™ and Optimum® are trademarks of Pioneer Hi-Bred.
- SureStand™ is a trademark of Steyer Seeds.
- Agrisure®, ApronMaxx®, ApronXL®, Avicta®, Cruiser®, CruiserMaxx®, Dynasty®, Maxim® and Viptera™ are trademarks of a Syngenta Group Company.
- Inovate™ System is a trademark of Valent
- Protinus™ is a trademark of Wolf Trax, Inc.