

Test by: NewVenture, LLC Ellendale, MN

## 2021 Soybeans Top 30 Harvest Report

Minnesota North Central [MNNC] ALBANY, MN  
Mitch Oveman, Stearns County, MN 56381

<b>Early-Season Test</b>	Maturity Group <b>0.6 - 0.9</b> S2021MNNC04a
<b>Top 21 of 37</b>	For Gross Income (Sorted by Yield) Average of (3) Replications
<b>PREV. CROP/HERB:</b>	Corn / NA
<b>SOIL DESCRIPTION:</b>	Gonvik Loam loam, mod. well drained, non-irrigated
<b>SOIL CONDITION:</b>	very high P, medium K, 6.5 pH, 3.0% OM, 15.4 CEC
<b>TILLAGE/CULTIVATION:</b>	Conventional W/ Fall Till
<b>PEST MANAGEMENT:</b>	Class Act, Cornerstone, Enlist
<b>Applied N-P-K (units):</b>	0-0-0
<b>SEEDED - RATE - ROW:</b>	May 15 140.0 /A 30" spacing
<b>HARVESTED - STAND:</b>	Nov 5 129.3 /A

### TEST COMMENTS:

*This site was accidentally sprayed with Enlist herbicide. All non-tolerant varieties were completely destroyed. The site received minimal rain throughout the growing season. The rains did come late in the season, which caused the beans to dry down very slowly. The beans were still tough to combine at this late date. Thank you to Mitch for hosting this year. Due to herbicide damage, these results will not be included in the region summary.*

Report Date: 11/05/2021

Additional reports available at [www.firstseedtests.com](http://www.firstseedtests.com)

Company/Brand	Product/Brand	Technol.†	RM	SCN Resist.	Yield Bu/A ↓	Moisture %	Lodging %	Stand (x 1000)	Gross Income \$/Acre	Rank
Stine	09EA02 § ↗	E3	0.9	R	<b>40.3</b>	17.2	4	130.3	479	1
Xitavo	XO 0602E ↗	E3	0.6	R	<b>38.1</b>	15.9	4	130.0	454	2
Apex	AE0720 ↗	E3	0.7	R	36.0	16.7	23	129.3	429	3
Thunder	TE7207 ↗	E3	0.7	S	34.7	17.0	19	129.3	413	4
Xitavo	XO 0731E ↗	E3	0.7	R	33.4	17.6	6	128.3	397	5
Loyal	L0640E ↗	E3	0.6	R	33.3	16.8	5	130.0	396	6
Dairyland	DSR-0847E ↗	E3	0.8	S	32.9	16.7	8	128.3	392	7
Dairyland	DSR-0660E ↗	E3	0.6	R	32.7	16.6	6	128.3	389	8
Latham	L 0785 E3 ↗	E3	0.7	R	32.7	17.1	10	130.3	389	9
Dyna-Gro	S09EN41 ↗	E3	0.9	R	32.3	16.8	13	129.3	385	10
Loyal	L0740E ↗	E3	0.7	R	32.3	16.9	4	128.0	384	11
Genesis	G0651E ↗	E3	0.6	R	31.8	16.6	3	129.0	379	12
Zinesto	Z0702E ↗	E3	0.7	NA	31.1	16.8	7	128.0	370	13
Apex	AE0611 ↗	E3	0.6	R	30.6	16.9	7	131.0	364	14
Genesis	G0760E ↗	E3	0.7	R	30.0	16.8	5	129.3	357	15
Zinesto	Z0602E ↗	E3	0.6	NA	28.1	16.8	4	129.3	335	16
Dairyland	DSR-1010E ↗	E3	1.0	R	27.7	17.5	4	130.0	329	17
Golden Harvest	GH0842E3 ↗	E3	0.8	R	24.9	16.8	7	131.0	296	18
Dyna-Gro	S07EN61 ↗	E3	0.7	R	24.8	17.1	8	128.0	295	19
Latham	L 0995 E3 ↗	E3	0.9	R	23.4	16.8	6	129.3	279	20
NK Brand	NK08-V9E3 § ↗	E3	0.8	R	21.3	17.0	17	129.5	252	21

Averages = **31.3** **16.9** **8** **129.3** **210**

LSD (0.10) = 5.9 ns ns

LSD (0.25) = 3.1 ns ns

Ed Dahle

ed.dahle@firstseedtests.com, (507) 456-6624

C.V. = 17.8

Historic yield: 52.19 bu/a, 5 yr(s)

**Yield & Income Factors:** Base Moisture = 13.0% Shrink = 1.3 Drying = \$0.025 Prices: GMO = \$12.00

† See last page for abbreviation descriptions. Dark colored row identifies the check product found in early- and full-season tests. **Bold** yields are significantly above test average by LSD(0.10). **Italicized** brands exceed the grain moisture limit for this test. **ns** = column values not significantly different. ↗ New! Links to full product yield results at [www.firstseedtests.com](http://www.firstseedtests.com)

Test by: NewVenture, LLC Ellendale, MN

## 2021 Soybeans Top 30 Harvest Report

Minnesota North Central [MNCC] ALBANY, MN  
Mitch Oveman, Stearns County, MN 56381

<b>Full-Season Test</b>	Maturity Group 1.0 - 1.5 S2021MNCC04b
<b>Top 30 of 54</b>	For Gross Income (Sorted by Yield) Average of (3) Replications
<b>PREV. CROP/HERB:</b>	Corn / NA
<b>SOIL DESCRIPTION:</b>	Gonvik Loam loam, mod. well drained, non-irrigated
<b>SOIL CONDITION:</b>	very high P, medium K, 6.5 pH, 3.0% OM, 15.4 CEC
<b>TILLAGE/CULTIVATION:</b>	Conventional W/ Fall Till
<b>PEST MANAGEMENT:</b>	Class Act, Cornerstone, Enlist
<b>Applied N-P-K (units):</b>	0-0-0
<b>SEDED - RATE - ROW:</b>	May 15 140.0 /A 30" spacing
<b>HARVESTED - STAND:</b>	Nov 5 128.9 /A

### TEST COMMENTS:

*This site was accidentally sprayed with Enlist herbicide. All non-tolerant varieties were completely destroyed. The site received minimal rain throughout the growing season. The rains did come late in the season, which caused the beans to dry down very slowly. The beans were still tough to combine at this late date. Thank you to Mitch for hosting this year. Due to herbicide damage, these results will not be included in the region summary.*

Company/Brand	Product/Brand	Technol.†	RM	SCN Resist.	Yield Bu/A ↓	Moisture %	Lodging %	Stand (x 1000)	Gross Income \$/Acre	Rank
Xitavo	XO 1451E ↗	E3	1.4	R	<b>44.2</b>	17.2	2	131.0	526	1
Latham	L 1392 E3 ↗	E3	1.3	R	<b>41.6</b>	16.7	5	129.0	495	2
Dairyland	DSR-1290E ↗	E3	1.2	R	41.0	16.8	5	129.0	488	3
Latham	L 1219 E3 ↗	E3	1.2	R	40.8	17.2	30	128.3	485	4
Apex	AE1520 ↗	E3	1.5	R	40.6	17.3	15	129.0	483	5
Dahlman	1111E3N GC ↗	E3,ST	1.1	R	39.6	16.3	3	127.0	472	6
Dairyland	DSR-1450E ↗	E3	1.4	R	39.4	16.1	7	130.3	470	7
Genesis	G1260E ↗	E3	1.2	R	37.7	17.0	4	129.3	449	8
Genesis	G1460E ↗	E3	1.4	R	37.5	17.7	9	130.3	446	9
Genesis	G1560E ↗	E3	1.5	R	37.3	17.2	6	126.0	444	10
Loyal	L1240E ↗	E3	1.2	R	36.7	16.7	10	128.7	437	11
Loyal	L1540E ↗	E3	1.5	R	36.2	17.0	6	130.0	431	12
Stine	11EC02 § ↗	E3	1.1	R	36.1	16.7	6	126.3	430	13
Latham	L 1558 E3 ↗	E3	1.5	R	35.5	17.5	7	129.3	422	14
Xitavo	XO 1372E ↗	E3	1.3	R	34.9	17.0	10	129.7	415	15
Dairyland	DSR-0920E ↗	E3	0.9	R	34.3	16.6	8	129.3	409	16
Xitavo	XO 1041E ↗	E3	1.0	R	34.2	16.8	10	129.3	407	17
Loyal	L1230ES ↗	E3,ST	1.2	R	34.1	17.1	13	127.7	406	18
Golden Harvest	GH1472E3 ↗	E3	1.4	R	34.0	16.2	4	130.3	405	19
Zinesto	Z1101E ↗	E3	1.1	R	33.4	16.9	5	127.0	398	20
Stine	14EE01 § ↗	E3	1.4	MR	33.4	16.8	19	128.5	398	21
Loyal	L1440E ↗	E3	1.4	R	32.5	17.4	3	129.0	386	22
NK Brand	NK14-W6E3 ↗	E3	1.4	MR	31.8	17.2	6	128.3	378	23
Zinesto	Z1302E ↗	E3	1.3	NA	31.8	17.2	9	131.0	378	24
Thunder	TE7011N ↗	E3	1.1	R	31.5	17.1	10	129.0	375	25
Xitavo	XO 1212E ↗	E3	1.2	R	31.2	17.2	11	128.7	371	26
Apex	AE1220 ↗	E3	1.2	R	30.0	16.8	11	129.0	357	27
Apex	AE1420 ↗	E3	1.4	R	29.1	17.3	6	129.0	346	28
Zinesto	Z1202E ↗	E3	1.2	NA	28.8	17.3	26	126.7	343	29
Dairyland	DSR-1318E ↗	E3	1.3	R	28.5	17.1	5	129.0	339	30

Averages = **35.0** **17.0** **9** **128.9** **239**

LSD (0.10) = 6.1 ns ns

LSD (0.25) = 3.2 ns ns

Ed Dahle

ed.dahle@firstseedtests.com, (507) 456-6624

C.V. = 16.4

Historic yield: 52.19 bu/a, 5 yr(s)

**Yield & Income Factors:** Base Moisture = 13.0% Shrink = 1.3 Drying = \$0.025 Prices: GMO = \$12.00

Report Date: 11/05/2021

† See last page for abbreviation descriptions. Dark colored row identifies the check product found in early- and full-season tests. **Bold** yields are significantly above test average by LSD(0.10). **Italicized** brands exceed the grain moisture limit for this test. **ns** = column values not significantly different. ↗ New! Links to full product yield results at www.firstseedtests.com

©2021, All rights reserved by Elite Field Genetics, LLC

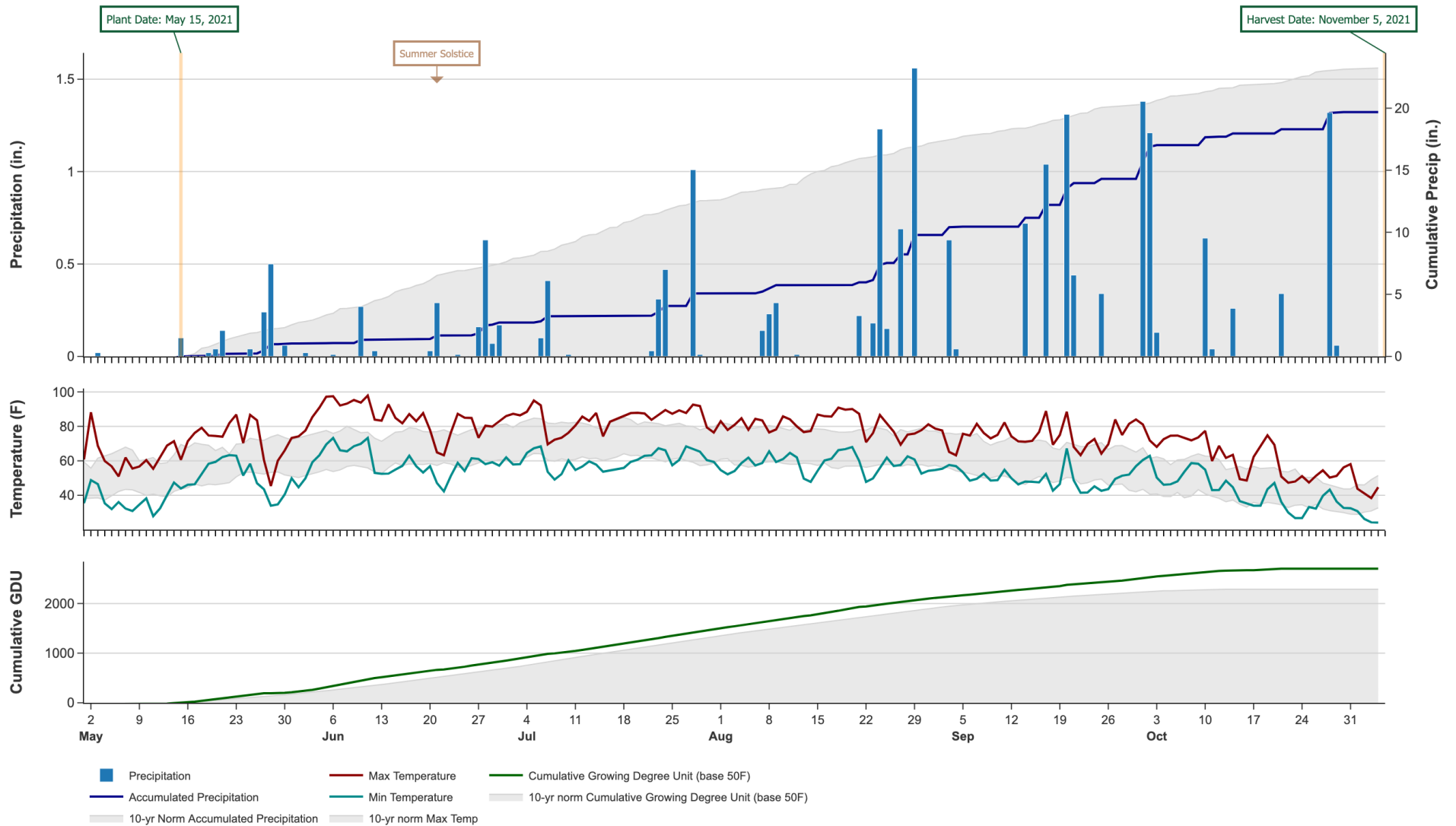
Additional reports available at [www.firstseedtests.com](http://www.firstseedtests.com)

# 2021 Soybeans - Minnesota North Central [ MNNC ]

## Weather Conditions Summary at ALBANY, MN

Weather Data Retrieved: 11/05/2021

Monthly Total	May*	Jun	Jul	Aug	Sep	Oct	Nov*	Total
Precip (in)   Normal (Diff)	1.2   4.4 (-3.2)	1.7   4.9 (-3.2)	2.4   5.1 (-2.8)	4.7   4.6 (+0.1)	4.5   3.1 (+1.4)	5.4   2.9 (+2.5)	0.0   0.1 (-0.1)	19.8   25.0 (-5.2)
GDU   Normal (Diff)	266   245 (+20)	612   498 (+113)	665   659 (+5)	607   563 (+43)	401   333 (+67)	202   57 (+144)	0   0 (0)	2753   2357 (+395)



\* First monthly total starts on the date 14 days prior to planting and final monthly total ends on the harvest date.

Note: Weather information from PRISM Climate Group. Data may be revised by the provider after retrieval. FIRST will not revise or update reports to reflect any weather data changes. For information purposes only.

## 2021 Soybeans - Minnesota North Central [ MNNC ]

### Early-Season Test Products (37 Total)

Company/Brand	Product/Brand	Technology	SCN	RM	Seed Treat.
Apex	AE0611	E3	R	0.6	CMBV,SA
Apex	AE0720	E3	R	0.7	CMBV,SA
Asgrow	AG09XF0 §	RXF	R	0.9	ACi,IL
Credenz	CZ 0661GTLL	LLGT27	R	0.6	PV,IL,OB
Dahlman	6015XN CK	RRX	R	1.5	IS
Dairyland	DSR-0660E	E3	R	0.6	Lum,IL
Dairyland	DSR-0847E	E3	S	0.8	Lum,IL
Dairyland	DSR-1010E	E3	R	1.0	Lum,IL
Dyna-Gro	S07EN61	E3	R	0.7	EQV,SA
Dyna-Gro	S09EN41	E3	R	0.9	EQV,SA
Genesis	G0651E	E3	R	0.6	CMBV,SA
Genesis	G0760E	E3	R	0.7	CMBV,SA
Golden Harvest	GH0749X	RRX	MR	0.7	CMBV,SA
Golden Harvest	GH0822XF §	RXF	R	0.8	CMBV,SA
Golden Harvest	GH0842E3	E3	R	0.8	CMBV,SA
Hefty	H06X8	RRX	MR	0.6	DST4,SA
Hefty	H06XF2	RXF	NA	0.6	DST4,SA
Hefty	H07XF1	RXF	NA	0.7	DST4,SA
Hefty	H08XF2	RXF	NA	0.8	DST4,SA
Latham	L 0728 XF	RXF	R	0.7	SS+,SA
Latham	L 0785 E3	E3	R	0.7	SS+,SA
Latham	L 0984 XF	RXF	R	0.9	SS+,SA
Latham	L 0995 E3	E3	R	0.9	SS+,SA
Loyal	L0640E	E3	R	0.6	CMBV,SA
Loyal	L0740E	E3	R	0.7	CMBV,SA
NK Brand	NK08-B7XF	RXF	R	0.8	CMBV,SA
NK Brand	NK08-V9E3 §	E3	R	0.8	CMBV,SA
Pioneer	P09A53X §	RRX	NA	0.9	Lum,Lu
Stine	09EA02 §	E3	R	0.9	SFI
Thunder	SB8807N	RRX	R	0.7	AM
Thunder	TE7207	E3	S	0.7	AM
Thunder	TX8109N	RXF	R	0.9	AM
Thunder	TX8207N	RXF	R	0.7	AM
Xitavo	XO 0602E	E3	R	0.6	PV,IL,OB
Xitavo	XO 0731E	E3	R	0.7	PV,IL,OB
Zinesto	Z0602E	E3	NA	0.6	DST4,SA
Zinesto	Z0702E	E3	NA	0.7	DST4,SA

## 2021 Soybeans - Minnesota North Central [ MNNC ]

### Full-Season Test Products (54 Total)

Company/Brand	Product/Brand	Technology	SCN	RM	Seed Treat.
Apex	AE1220	E3	R	1.2	CMBV,SA
Apex	AE1420	E3	R	1.4	CMBV,SA
Apex	AE1520	E3	R	1.5	CMBV,SA
Asgrow	AG10XF1 §	RXF	R	1.0	ACi,IL
Asgrow	AG15XF2 §	RXF	R	1.5	ACi,IL
Credenz	CZ 1171GTLL	LLGT27	MR	1.1	PV,IL,OB
Credenz	CZ 1331GTLL	LLGT27	R	1.3	PV,IL,OB
Dahlman	111E3N GC	E3,ST	R	1.1	IS
Dahlman	6015XN CK	RRX	R	1.5	IS
Dahlman	6815XN GC	RRX	R	1.5	IS
Dairyland	DSR-0920E	E3	R	0.9	Lum,IL
Dairyland	DSR-1290E	E3	R	1.2	Lum,IL
Dairyland	DSR-1318E	E3	R	1.3	Lum,IL
Dairyland	DSR-1450E	E3	R	1.4	Lum,IL
Dyna-Gro	S12XF92	RXF	R	1.2	EQV,SA
Dyna-Gro	S15XF82	RXF	MR	1.5	EQV,SA
Genesis	G1260E	E3	R	1.2	CMBV,SA
Genesis	G1460E	E3	R	1.4	CMBV,SA
Genesis	G1560E	E3	R	1.5	CMBV,SA
Gold Country	1041XF	RXF	R	1.0	ACi,IL
Golden Harvest	GH1032XF	RXF	R	1.0	CMBV,SA
Golden Harvest	GH1442XF	RXF	MR	1.4	CMBV,SA
Golden Harvest	GH1472E3	E3	R	1.4	CMBV,SA
Hefty	H11XF2	RXF	NA	1.1	DST4,SA
Hefty	H12XF2	RXF	NA	1.2	DST4,SA
Hefty	H13XF1	RXF	NA	1.3	DST4,SA
Hefty	H14XF1	RXF	NA	1.4	DST4,SA
Latham	L 1219 E3	E3	R	1.2	SS+,SA
Latham	L 1383 XF	RXF	R	1.3	SS+,SA
Latham	L 1392 E3	E3	R	1.3	SS+
Latham	L 1558 E3	E3	R	1.5	SS+,SA
Loyal	L1230ES	E3,ST	R	1.2	CMBV,SA
Loyal	L1240E	E3	R	1.2	CMBV,SA
Loyal	L1440E	E3	R	1.4	CMBV,SA
Loyal	L1540E	E3	R	1.5	CMBV,SA
NK Brand	NK10-W8XF	RXF	R	1.0	CMBV,SA
NK Brand	NK14-C7XF §	RXF	R	1.4	CMBV,SA
NK Brand	NK14-W6E3	E3	MR	1.4	CMBV,SA
Pioneer	P11A44X §	RRX	R	1.1	Lum,Lu,IL
Pioneer	P15A63X §	RRX	NA	1.5	Untreated
Stine	11EC02 §	E3	R	1.1	SFI
Stine	14EE01 §	E3	MR	1.4	Treated

Company/Brand	Brand/Product	Technology	SCN	RM	Seed Treat.
Thunder	SB8010N	RRX	R	1.0	AM
Thunder	TE7011N	E3	R	1.1	AM
Thunder	TX8211N	RXF	R	1.1	AM
Thunder	TX8215N	RXF	R	1.5	AM
Xitavo	XO 1041E	E3	R	1.0	PV,IL,OB
Xitavo	XO 1212E	E3	R	1.2	PV,IL,OB
Xitavo	XO 1372E	E3	R	1.3	PV,IL,OB
Xitavo	XO 1451E	E3	R	1.4	PV,IL,OB
Zinesto	Z1101E	E3	R	1.1	DST4,SA
Zinesto	Z1202E	E3	NA	1.2	DST4,SA
Zinesto	Z1302E	E3	NA	1.3	DST4,SA
Zinesto	Z1502E	E3	NA	1.5	DST4,SA

## Footnotes and Abbreviations Descriptions

### Brand Footnotes

---

CK	Identifies a check product included in early- and full-season tests.
GC	Grower Comparison product included by FIRST when space permits.
§	United Soybean Board sponsored entry

### Soybean Cyst Nematode (SCN) Resistance Rating

---

S	susceptible
MR	moderate resistance
R	resistant
n/a	info unavailable

### Soybeans Technologies

---

E3	Enlist™ E3
LLGT27	LibertyLink® GT27®
RRX	Roundup Ready 2 Xtend®
RXF	Roundup Ready 2 XtendFlex®
ST	Sulfonylurea tolerant

---

### Soybeans Seed Treatments\*

---

NA	Not Available
ACi,IL	Acceleron® Standard Insecticide-Fungicide, ILeVO
AM	ApronMaxx
CMBV,SA	Cruisermass® Beans, Vibrance®, Saltro®
DST4,SA	Dominance 4 ST,Saltro®
EQV,SA	Equity VIP, Saltro®
IS	Intego® Suite
Lum,IL	LumiGEN™ plus ILeVO
Lum,Lu	LumiGEN™, Lumisena™
Lum,Lu,IL	LumiGEN™, Lumisena™, ILeVO
PV,IL,OB	Poncho®/Votivo®, ILeVO, Obvius Plus
SF1	Stine XP F&I
SS+	SoyShield Plus
SS+,SA	SoyShield Plus, Saltro®
Treated	Treated, unspecified
Untreated	No seed treatment

---

\* Seed treatments may include unspecified plant health promoting components.