

Test by: F.I.R.S.T. NCB, Inc. Lanark, IL

2023 Corn Grain Top 30 Harvest Report

Illinois North [ILNO] WINNEBAGO, IL
Eric Swanson, Ogle County, IL 61010

Ultra Early-Season Test 101 - 106 Day CRM
B2023ILNO15u

Top 30 of 36 For Gross Income
(Sorted by Yield)
Average of (3) Replications

PREV. CROP/HERB: Soybeans / Sonic, Thunder
Master, Flexstar, Cover XI

SOIL DESCRIPTION: St Charles/Pecatonica silt loam,
well drained, non-irrigated

SOIL CONDITION: Minimum W/O Fall Till, high P,
very high K, 6.0 pH, 3.5% OM,
15.2 CEC

PEST MANAGEMENT: Surestart, Atrazine, Callisto,
Roundup, Cover XI, Hero, Force

FERTILITY - Applied N: 23 Fall, 123 Spring, 70
Sidedress

Applied N-P-K (units): 216-58-75

SEEDED - RATE - ROW: May 11 37.5 /A 30" spacing

HARVESTED - STAND: Oct 31 31.5 /A

TEST COMMENTS:

This was a really nice plot all season long. Was a little short on rainfall during June, but by looking at the yields it's hard to tell. Eric made the comment that "[he is] not sure where the yields are coming from." There were very few diseases noted at harvest time and the stalks were still holding strong for the most part. Ears were filled out to the tip on most hybrids and had a nice deep kernel set.

Company/Brand	Product/Brand	Technol.†	RM	Yield Bu/A ↓	Moisture %	Lodging %	Stand (x 1000)	Gross Income \$/Acre	Rank
Burrus	POWER PLUS 2J67 Q ↗	QR	105	299.9	18.0	19	27.7	1397	1
ProHarvest	75P85 DGV2P ↗	VT2PDG	105	293.3	16.6	17	34.8	1379	2
AgVenture	AV1504Q ↗	QR	104	290.8	17.7	15	32.2	1358	6
Cornelius	C6400DGGP ↗	VT2PDG	104	290.2	15.6	27	35.7	1374	3
FS InVision	FS 5335P RIB ↗	STXP	103	290.0	16.9	16	32.2	1361	4
LG Seeds	LG56C25SSP ↗	STXP	106	289.5	17.9	17	29.5	1350	7
Wyffels	W4025RIB ↗	TRE	105	289.4	16.6	15	31.3	1361	5
NuTech	64B5Q ↗	QR	104	288.8	18.0	17	29.5	1346	8
Cornelius	C6552PC ↗	PCE	105	287.7	18.0	12	30.4	1341	9
Augusta	A1954 PCE ↗	PCE	104	285.9	17.7	13	33.0	1335	11
NuTech	66C2Q ↗	QR	106	284.5	17.5	29	33.0	1330	13
Stone	0304SS ↗	STX	103	283.6	17.9	20	29.5	1322	15
Wyffels	W3309 ↗	STXP	103	283.1	16.9	11	32.2	1329	14
Renk	RK625DGV2P ↗	VT2PDG	104	283.0	15.6	23	32.2	1339	10
Wyffels	W2595 ↗	TRE	101	281.6	15.8	26	32.2	1331	12
NuTech	63A5AM ↗	AM	103	281.1	17.6	23	33.1	1313	16
Wyffels	W3576RIB ↗	VT2P	103	279.0	16.6	14	28.6	1312	17
NuTech	65D3Q ↗	QR	105	278.3	18.0	25	33.1	1297	18
Stone	0603SP ↗	STXP	106	277.7	18.2	20	32.2	1292	19
Brevant	B04R11Q GC ↗	QR	104	275.7	17.4	22	32.1	1290	20
Brevant	B05C33Q GC ↗	QR	105	273.5	18.7	20	32.2	1269	23
Renk	RK703PWE ↗	PCE	106	270.5	18.0	15	33.9	1261	25
FS InVision	FS 5115X RIB ↗	STX	101	270.2	16.1	12	33.1	1275	21
Renk	RK720TRE ↗	TRE	106	268.7	16.2	28	27.7	1267	24
Renk	RK707TRE ↗	TRE	105	268.0	15.1	36	27.7	1272	22
NuTech	66D1AM ↗	AM	106	268.0	17.0	20	30.4	1257	26
AgVenture	AV7701AM ↗	AM	101	265.7	16.5	14	32.2	1250	28
Renk	RK628VT2P ↗	VT2P	102	265.1	16.4	29	32.2	1248	29
FS InVision	FS 5035P ↗	STXP	100	264.1	15.4	17	33.9	1252	27
Wyffels	W2629 ↗	STXP	101	263.2	16.0	14	25.9	1242	30

Jason T. Beyers

Jason Beyers

beyers@frontiernet.net, (815) 493-9005

Averages = **276.1** **16.9** **19** **31.5** **1296**

LSD (0.10) = 16.9 1.1 ns

LSD (0.25) = 8.9 0.6 ns

C.V. = 5.8

Historic yield: 201.14 bu/a, 24 yr(s)

Yield & Income Factors: Base Moisture = 15.0% Shrink = 1.3 Drying = \$0.03 Prices: GMO = \$4.75

Report Date: 10/31/2023

† See last page for abbreviation descriptions. Dark colored row identifies the check product found in early- and full-season tests. **Bold** yields are significantly above test average by LSD(0.10). **Italicized** brands exceed the grain moisture limit for this test. **ns** = column values not significantly different. ↗ Links to full product yield results at www.firstseedtests.com

©2023, All rights reserved to Farmers' Independent Research of Seed Technologies, LLC.

Additional reports available at www.firstseedtests.com

Test by: F.I.R.S.T. NCB, Inc. Lanark, IL

2023 Corn Grain Top 30 Harvest Report

Illinois North [ILNO] WINNEBAGO, IL
Eric Swanson, Ogle County, IL 61010

Early-Season Test 107 - 110 Day CRM
B2023ILNO15a

Top 30 of 54 For Gross Income
(Sorted by Yield)
Average of (3) Replications

PREV. CROP/HERB: Soybeans / Sonic, Thunder
Master, Flexstar, Cover XI

SOIL DESCRIPTION: St Charles/Pecatonica silt loam,
well drained, non-irrigated

SOIL CONDITION: Minimum W/O Fall Till, high P,
very high K, 6.0 pH, 3.5% OM,
15.2 CEC

PEST MANAGEMENT: Surestart, Atrazine, Callisto,
Roundup, Cover XI, Hero, Force

FERTILITY - Applied N: 23 Fall, 123 Spring, 70
Sidedress

Applied N-P-K (units): 216-58-75

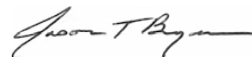
SEEDED - RATE - ROW: May 11 37.5 /A 30" spacing

HARVESTED - STAND: Oct 31 31.9 /A

TEST COMMENTS:

This was a really nice plot all season long. Was a little short on rainfall during June, but by looking at the yields it's hard to tell. Eric made the comment that "[he is] not sure where the yields are coming from." There were very few diseases noted at harvest time and the stalks were still holding strong for the most part. Ears were filled out to the tip on most hybrids and had a nice deep kernel set.

Company/Brand	Product/Brand	Technol.†	RM	Yield Bu/A ↓	Moisture %	Lodging %	Stand (x 1000)	Gross Income \$/Acre	Rank	
Cornelius	C6724SS ↗	STX	107	319.0	20.0	15	32.2	1467	1	
NuTech	70B4AM ↗	AM	110	316.7	21.6	21	33.1	1442	3	
NuTech	70F6Q ↗	QR	110	315.9	20.2	11	31.3	1451	2	
Burrus	POWER PLUS 5F17 Q ↗	QR	110	311.0	20.1	25	29.5	1430	5	
AgVenture	AV3310Q ↗	QR	110	310.8	19.5	12	34.8	1434	4	
Cornelius	C7048SSP ↗	STXP	110	309.3	21.8	14	33.1	1406	7	
AgVenture	AV2208AM ↗	AM	108	304.3	19.2	26	32.1	1407	6	
Burrus	POWER PLUS 5J21AM ↗	AM	110	303.1	21.7	19	28.6	1379	10	
Dyna-Gro	D50VC09RIB ↗	VT2P	110	302.8	19.9	20	31.3	1394	9	
Wyffels	W6215 ↗	TRE	109	302.2	19.1	26	31.3	1398	8	
Stone	0931SS ↗	STX	109	301.1	21.2	20	33.9	1374	11	
Hefty	H5952 ↗	VT2P	109	299.4	21.6	30	23.2	1363	15	
Purple Ribbon	23A10 ↗	VT2P	110	298.6	21.9	15	34.8	1357	18	
Brevant	B10H24Q GC ↗	QR	110	296.9	19.4	20	33.9	1371	12	
Wyffels	W5778RIB ↗	STX	109	296.4	19.2	14	30.4	1371	13	
Wyffels	W5406 ↗	VT2P	108	295.3	21.0	17	31.3	1349	21	
Pioneer	P0720Q GC ↗	QR	107	294.3	19.3	25	33.9	1360	16	
NuTech	70A8AM ↗	AM	110	294.2	20.4	28	32.2	1349	22	
FS InVision	FS 6017V RIB ↗	VT2P	110	293.4	18.8	23	33.0	1360	17	
NuTech	68A9AM ↗	AM	108	293.3	18.3	49	29.5	1364	14	
Integra	6061 STXRIB ↗	STX	110	293.0	21.5	25	33.9	1335	26	
Renk	RK773TRE ↗	TRE	109	292.7	19.5	35	33.9	1351	20	
Hefty	H6064 ↗	STX	110	291.5	20.2	6	30.4	1339	25	
FS InVision	FS 5725X RIB ↗	STX	107	291.1	18.5	19	33.9	1352	19	
Integra	5802 VT2PRIB ↗	VT2P	108	290.5	18.6	30	31.3	1349	23	
Purple Ribbon	24A09 ↗	VT2P	109	289.9	18.8	50	29.5	1344	24	
NK Brand	NK1040-AA ↗	AA	110	289.9	20.7	12	33.1	1327	30	
ProHarvest	79P87 SSRIB ↗	STX	109	289.0	19.7	30	33.9	1332	28	
Renk	RK766SSPRO ↗	STXP	109	288.8	19.4	6	34.8	1334	27	
NuTech	68A7AM ↗	AM	108	287.0	19.9	13	26.8	1321	31	
PIONEER	P1185Q CK	QR	111	289.3	20.2	41	33.1	1329	29	
				Averages =	288.2	20.0	24	31.9	1325	
				LSD (0.10) =	17.7	1.3	14			
				LSD (0.25) =	9.3	0.7	7			
				C.V. =	5.8					
									Historic yield: 201.14 bu/a, 24 yr(s)	



Jason Beyers

beyers@frontiernet.net, (815) 493-9005

Yield & Income Factors:

Base Moisture = 15.0%

Shrink = 1.3

Drying = \$0.03

Prices: GMO = \$4.75

Report Date: 10/31/2023

† See last page for abbreviation descriptions. Dark colored row identifies the check product found in early- and full-season tests. **Bold** yields are significantly above test average by LSD(0.10). **Italicized** brands exceed the grain moisture limit for this test. **ns** = column values not significantly different. ↗ Links to full product yield results at www.firstseedtests.com

©2023, All rights reserved to Farmers' Independent Research of Seed Technologies, LLC.

Additional reports available at www.firstseedtests.com

Test by: F.I.R.S.T. NCB, Inc. Lanark, IL

2023 Corn Grain Top 30 Harvest Report

Illinois North [ILNO] WINNEBAGO, IL
Eric Swanson, Ogle County, IL 61010

Full-Season Test	111 - 114 Day CRM B2023ILNO15b
Top 30 of 45	For Gross Income (Sorted by Yield) Average of (3) Replications
PREV. CROP/HERB:	Soybeans / Sonic, Thunder Master, Flexstar, Cover XI
SOIL DESCRIPTION:	St Charles/Pecatonica silt loam, well drained, non-irrigated
SOIL CONDITION:	Minimum W/O Fall Till, high P, very high K, 6.0 pH, 3.5% OM, 15.2 CEC
PEST MANAGEMENT:	Surestart, Atrazine, Callisto, Roundup, Cover XI, Hero, Force
FERTILITY - Applied N:	23 Fall, 123 Spring, 70 Sidedress
Applied N-P-K (units):	216-58-75
SEEDED - RATE - ROW:	May 11 37.5 /A 30" spacing
HARVESTED - STAND:	Oct 31 31.3 /A

TEST COMMENTS:

This was a really nice plot all season long. Was a little short on rainfall during June, but by looking at the yields it's hard to tell. Eric made the comment that "[he is] not sure where the yields are coming from." There were very few diseases noted at harvest time and the stalks were still holding strong for the most part. Ears were filled out to the tip on most hybrids and had a nice deep kernel set.

Company/Brand	Product/Brand	Technol.†	RM	Yield Bu/A ↓	Moisture %	Lodging %	Stand (x 1000)	Gross Income \$/Acre	Rank
Wyffels	W7876RIB ↗	VT2P	114	314.1	23.5	5	33.9	1412	3
FS InVision	FS 6137PC ↗	PCE	111	313.8	21.3	19	32.2	1432	1
AgVenture	AV3213AM ↗	AM	113	311.9	22.9	9	28.6	1408	4
Wyffels	W6886 ↗	VT2P	111	309.9	22.1	6	33.0	1406	5
Brevant	B13K20Q GC ↗	QR	113	308.8	19.8	22	32.2	1422	2
Integra	6244 PWE ↗	PCE	112	303.6	20.7	19	29.5	1390	6
Cornelius	C7235PC ↗	PCE	112	300.1	21.1	18	32.2	1370	7
Integra	6274 VT2PRIB ↗	VT2P	112	299.6	21.1	10	32.1	1368	8
Cornelius	C7308SS ↗	STX	113	298.4	22.8	22	31.3	1348	11
NuTech	72A5Q ↗	QR	112	298.0	20.9	12	33.1	1363	9
Renk	RK876VT2P ↗	VT2P	113	297.6	25.2	12	33.9	1322	21
AgVenture	AV3514Q ↗	QR	114	297.0	21.8	37	31.3	1350	10
Wyffels	W8108 ↗	STX	114	296.7	24.3	6	31.3	1326	18
Pioneer	P1278Q GC ↗	QR	112	295.3	21.6	14	31.3	1345	12
FS InVision	FS 6395VDG RIB ↗	VT2PDG	113	295.3	22.6	5	31.3	1336	15
Golden Harvest	G14B32-DV ↗	DV	114	294.1	23.1	25	29.5	1326	19
ProHarvest	84P78 TRERIB ↗	TRE	114	294.1	26.2	2	28.6	1298	28
Purple Ribbon	23A12 ↗	VT2PDG	112	294.0	21.8	18	32.1	1337	13
Golden Harvest	G11V76-AA ↗	AA	111	293.8	22.0	2	33.0	1334	16
Renk	RK811PWE ↗	PCE	111	292.8	22.0	22	32.2	1330	17
Stone	1303SP ↗	STXP	113	291.9	24.0	19	34.8	1308	26
Brevant	B11Y01Q GC ↗	QR	111	290.8	20.1	25	30.4	1337	14
LG Seeds	LG63C77STXRIB ↗	STX	112	290.7	22.6	23	30.4	1315	24
FS InVision	FS 6432P RIB ↗	STXP	114	290.3	24.4	4	30.4	1297	30
FS InVision	FS 6133VDG RIB ↗	VT2PDG	111	290.0	21.0	20	29.5	1325	20
Dyna-Gro	D53SS13RIB ↗	STX	113	289.3	23.5	11	28.6	1301	27
Hefty	H6354 ↗	STX	113	289.3	21.0	14	31.3	1322	22
NuTech	73A4AM ↗	AM	113	288.6	22.1	15	31.3	1309	25
Hefty	H6244 ↗	STX	112	288.1	23.2	20	29.5	1298	29
Wyffels	W7048 ↗	STX	111	287.4	23.3	17	28.6	1294	31
PIONEER	P1185Q CK	QR	111	288.3	21.1	50	32.2	1316	23
				Averages =	291.6	22.6	16	31.3	1318
				LSD (0.10) =	13.1	1.4	12		
				LSD (0.25) =	6.9	0.7	6		
				C.V. =	4.3				
				Historic yield: 201.14 bu/a, 24 yr(s)					

Jason Beyers

beyers@frontiernet.net, (815) 493-9005

Yield & Income Factors:

Base Moisture = 15.0% Shrink = 1.3 Drying = \$0.03 Prices: GMO = \$4.75

Report Date: 10/31/2023

† See last page for abbreviation descriptions. Dark colored row identifies the check product found in early- and full-season tests. **Bold** yields are significantly above test average by LSD(0.10). **Italicized** brands exceed the grain moisture limit for this test. **ns** = column values not significantly different. ↗ Links to full product yield results at www.firstseedtests.com

©2023, All rights reserved to Farmers' Independent Research of Seed Technologies, LLC.

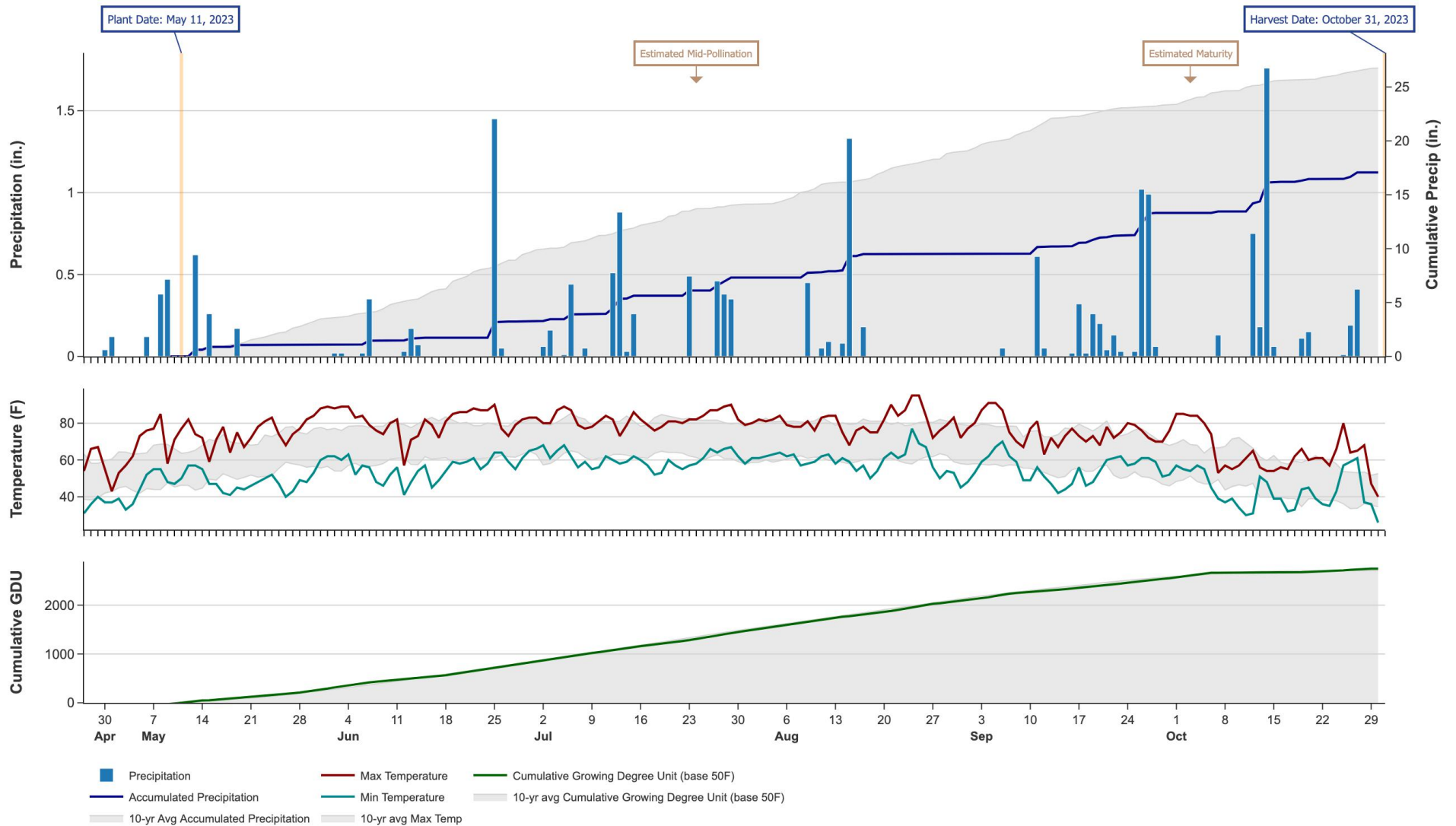
Additional reports available at www.firstseedtests.com

2023 Corn - Illinois North [ILNO]

Weather Conditions Summary at WINNEBAGO, IL

Weather Data Retrieved: 10/31/2023

Monthly Total	Apr*	May	Jun	Jul	Aug	Sep	Oct*	Total
Precip (in) (Diff)	0.0 0.7 (-0.7)	2.1 5.2 (-3.1)	2.2 6.2 (-4.0)	4.1 4.5 (-0.4)	2.2 4.8 (-2.7)	3.8 4.4 (-0.5)	3.8 3.4 (+0.4)	18.2 29.1 (-10.9)
GDU Avg (Diff)	16 11 (+4)	357 329 (+27)	554 585 (-31)	650 668 (-18)	614 631 (-17)	468 448 (+19)	194 128 (+65)	2853 2803 (+49)



* First monthly total starts on the date 14 days prior to planting and final monthly total ends on the harvest date.

Note: Weather information from PRISM Climate Group. Data may be revised by the provider after retrieval. FIRST will not revise or update reports to reflect any weather data changes. For information purposes only.

2023 Corn - Illinois North [ILNO]

Ultra Early-Season Test Products (36 Total)

Company/Brand	Product/Brand	Technology	RIB	RM	Seed Treat.
AgVenture	AV1504Q	QR	Y	104	Lum, L1
AgVenture	AV7701AM	AM	Y	101	Lum, L1
Augusta	A1954 PCE	PCE	N	104	CM,C2
Brevant	B04R11Q GC	QR	Y	104	Lum, L1
Brevant	B05C33Q GC	QR	Y	105	Lum, L1
Burrus	POWER PLUS 2J67 Q	QR	Y	105	BPS
Cornelius	C6400DGDP	VT2PDG	N	104	AC,P5V
Cornelius	C6552PC	PCE	N	105	CM,C2,Vi
Cornelius	C6578PC	PCE	N	105	AC,P5V
FS InVision	FS 5035P	STXP	N	100	AC,P5V,EDC-EL
FS InVision	FS 5115X RIB	STX	Y	101	AC,P5V,EDC-EL
FS InVision	FS 5125L1A EZR	AA	Y	101	AC,P5V,EDC-EL
FS InVision	FS 5335P RIB	STXP	Y	103	AC,P5V,EDC-EL
FS InVision	FS 5594X RIB	STX	Y	105	AC,P5V,EDC-EL
LG Seeds	LG56C25SSP	STXP	N	106	AC,P5V
NK Brand	NK0295-AA	AA	Y	102	CM,C5,Va
NuTech	63A5AM	AM	Y	103	Lum, L1
NuTech	64B5Q	QR	Y	104	Lum, L1
NuTech	65D3Q	QR	Y	105	Lum, L1
NuTech	66C2Q	QR	Y	106	Lum, L1
NuTech	66D1AM	AM	Y	106	Lum, L1
Pioneer	P0421Q GC	QR	Y	104	Lum, L1
Pioneer	P0529Q GC	QR	Y	105	Lum, L1
ProHarvest	75P85 DGVT2P	VT2PDG	N	105	AC,P5V,Va
Renk	RK625DGVT2P	VT2PDG	N	104	AC,P2
Renk	RK628VT2P	VT2P	N	102	AC,P5V,B300
Renk	RK703PWE	PCE	N	106	Lum,P5V
Renk	RK707TRE	TRE	N	105	AC,P5V,B300
Renk	RK720TRE	TRE	N	106	AC,P2
Stone	0304SS	STX	Y	103	AC,P5V,EDC-B
Stone	0603SP	STXP	Y	106	AC,P5V,EDC-B
Wyffels	W2595	TRE	N	101	AC,P5
Wyffels	W2629	STXP	N	101	AC,P5
Wyffels	W3309	STXP	N	103	AC,P5
Wyffels	W3576RIB	VT2P	Y*	103	CM,C2,Vi,Va
Wyffels	W4025RIB	TRE	Y*	105	CM,C2,Vi,Va

* FIRST does not inspect products for refuge blend. N* indicates the product was entered without a refuge component by the sponsoring seed company. Prior year entries may contain refuge blend.

2023 Corn - Illinois North [ILNO]

Early-Season Test Products (54 Total)

Company/Brand	Product/Brand	Technology	RIB	RM	Seed Treat.
AgVenture	AV2208AM	AM	Y	108	Lum, L1
AgVenture	AV3310Q	QR	Y	110	Lum, L1
AgVenture	AV6010AM	AM	Y	110	Lum, L1
Augusta	A1160-AA GC	AA	N	110	CM,C2
Augusta	A1958-DV	DV	N	108	CM,C2
Brevant	B10H24Q GC	QR	Y	110	Lum, L1
Burrus	POWER PLUS 5F17 Q	QR	Y	110	BPS
Burrus	POWER PLUS 5J21AM	AM	Y	110	Lum, L1
Burrus	POWER PLUS 5L44AM	AM	Y	110	BPS
Cornelius	C6724SS	STX	N	107	AVC,C2,CM,C5,Vi,Va
Cornelius	C6847TRE	TRE	N	108	AVC
Cornelius	C7048SSP	STXP	N	110	AC,P5V,EDC-EL
DeKalb	DKC59-82RIB GC	VT2P	Y	109	AC,P5V,EDC-EL
Dyna-Gro	D50VC09RIB	VT2P	Y*	110	AC,P5V
FS InVision	FS 5725X RIB	STX	Y	107	AC,P5V,EDC-EL
FS InVision	FS 5835V RIB	VT2P	Y	108	AC,P5V,EDC-EL
FS InVision	FS 5935X RIB	STX	Y	109	AC,P5V,EDC-EL
FS InVision	FS 6017V RIB	VT2P	Y	110	AC,P5V,EDC-EL
FS InVision	FS 6025X RIB	STX	Y	110	AC,P5V,EDC-EL
Golden Harvest	G08B38-AA	AA	Y	108	CM,C5,Va
Golden Harvest	G10B61-AA	AA	Y	110	CM,C5,Va
Hefty	H5862	VT2P	N	108	HC
Hefty	H5944	STX	N	109	HC
Hefty	H5952	VT2P	N	109	HC
Hefty	H6064	STX	N	110	HC
Integra	5704 SSSPRO	STXP	Y	107	AC,P5V
Integra	5802 VT2PRIB	VT2P	Y	108	AC,P5V,SU+Zn
Integra	6061 STXRIB	STX	Y	110	AC,P5V,SU+Zn
LG Seeds	LG56C78-3110 GC	3110	N	106	AC,P5V
LG Seeds	LG60C86-5222	DV	Y	110	AC,P5V
LG Seeds	LG61C34STXRIB	STXP	Y*	111	AC,P5V
NK Brand	NK0835-AA	AA	Y	108	CM,C5,Va
NK Brand	NK1040-AA	AA	Y	110	CM,C5,Va
NuTech	68A7AM	AM	Y	108	Lum, L1
NuTech	68A9AM	AM	Y	108	Lum, L1
NuTech	70A8AM	AM	Y	110	Lum, L1
NuTech	70B4AM	AM	Y	110	Lum, L1
NuTech	70F6Q	QR	Y	110	Lum, L1
Pioneer	P0720Q GC	QR	Y	107	Lum, L1
Pioneer	P0924Q GC	QR	Y	109	Lum, L1
Pioneer	P1185Q CK	QR	Y	111	Lum, L1
ProHarvest	79P49 VT2PRIB	VT2P	Y	109	AC,P5V,Va

Company/Brand	Brand/Product	Technology	RIB	RM	Seed Treat.
ProHarvest	79P87 SSRIB	STX	Y	109	AC,P5V,Va
Purple Ribbon	23A08	VT2P	Y	108	AC,P2
Purple Ribbon	23A10	VT2P	Y	110	AC,P2
Purple Ribbon	24A09	VT2P	Y	109	AC,P2
Renk	RK766SSPRO	STXP	N	109	AC,P5V,B300
Renk	RK773TRE	TRE	N	109	AC,P5V,B300
Stone	0904SP	STXP	Y	109	AC,P5V,EDC-B
Stone	0931SS	STX	Y	109	AC,P5V,EDC-B
Wyffels	W5019	STXP	N	107	AC,P5
Wyffels	W5406	VT2P	N	108	AC,P5
Wyffels	W5778RIB	STX	Y	109	CM,C2,Vi,Va
Wyffels	W6215	TRE	N	109	CM,C2,Vi,Va

* FIRST does not inspect products for refuge blend. N* indicates the product was entered without a refuge component by the sponsoring seed company. Prior year entries may contain refuge blend.

2023 Corn - Illinois North [ILNO]

Full-Season Test Products (45 Total)

Company/Brand	Product/Brand	Technology	RIB	RM	Seed Treat.
AgVenture	AV3213AM	AM	Y	113	Lum, L1
AgVenture	AV3514Q	QR	Y	114	Lum, L1
Brevant	B11Y01Q GC	QR	Y	111	Lum, L1
Brevant	B13K20Q GC	QR	Y	113	Lum, L1
Cornelius	C7202SSP	STXP	N	112	AC,P5V,EDC-EL
Cornelius	C7235PC	PCE	N	112	AVC
Cornelius	C7308SS	STX	N	113	AVC,C2,CM,C5,Vi,Va
Dyna-Gro	D53SS13RIB	STX	Y*	113	AC,P5V
FS InVision	FS 6133VDG RIB	VT2PDG	Y	111	AC,P5V,EDC-EL
FS InVision	FS 6137PC	PCE	N	111	CM,C2,Vi,Va
FS InVision	FS 6217X RIB	STX	Y	112	AC,P5V,EDC-EL
FS InVision	FS 6395VDG RIB	VT2PDG	Y	113	AC,P5V,EDC-EL
FS InVision	FS 6432P RIB	STXP	Y	114	AC,P5V,EDC-EL
Golden Harvest	G11V76-AA	AA	Y	111	CM,C5,Va
Golden Harvest	G13B17-AA	AA	Y	113	CM,C5,Va
Golden Harvest	G14B32-DV	DV	Y	114	AVC,C1,Va
Hefty	H6244	STX	N	112	HC
Hefty	H6354	STX	N	113	HC
Hefty	H6355	TRE	N	113	HC
Integra	6244 PWE	PCE	N	112	AC,P5V
Integra	6274 VT2PRIB	VT2P	Y	112	AC,P5V
LG Seeds	LG63C77STXRIB	STX	Y	112	AC,P5V
LG Seeds	LG64C20-5222	DV	Y	114	AC,P5V
NK Brand	NK1333-AA	AA	Y	113	CM,C5,Va
NuTech	72A5Q	QR	Y	112	Lum, L1
NuTech	73A4AM	AM	Y	113	Lum, L1
NuTech	73A6Q	QR	Y	113	Lum, L1
NuTech	74A9AM	AM	Y	114	Lum, L1
NuTech	74C4AM	AM	Y	114	Lum, L1
Pioneer	P1185Q CK	QR	Y	111	Lum, L1
Pioneer	P1278Q GC	QR	Y	112	Lum, L1
ProHarvest	83P66 VT2P	VT2P	N	113	AC,P5V,Va
ProHarvest	84P78 TRERIB	TRE	Y	114	AC,P5V,Va
Purple Ribbon	23A11 TRE	TRE	Y	111	AC,P2
Purple Ribbon	23A12	VT2PDG	Y	112	AC,P2
Renk	RK811PWE	PCE	N	111	Lum,P5V
Renk	RK876VT2P	VT2P	N	113	AC,P5V,B300
Renk	RK895DGV2P	VT2PDG	N	113	AC,P2
Stone	1103SS	STX	Y	111	AC,P5V,EDC-B
Stone	1303SP	STXP	Y	113	AC,P5V,EDC-B
Wyffels	W6886	VT2P	N	111	AC,P5
Wyffels	W7048	STX	N	111	AC,P5

Company/Brand	Brand/Product	Technology	RIB	RM	Seed Treat.
Wyffels	W7208RIB	STX	Y	112	CM,C2,Vi,Va
Wyffels	W7876RIB	VT2P	Y	114	CM,C2,Vi,Va
Wyffels	W8108	STX	N	114	AC,P5

* FIRST does not inspect products for refuge blend. N* indicates the product was entered without a refuge component by the sponsoring seed company. Prior year entries may contain refuge blend.

Footnotes and Abbreviations Descriptions

Brand Footnotes

CK	Identifies a check product included in early- and full-season tests.
GC	Grower Comparison product included by FIRST when space permits.
^	Innotech™ brand seed is distributed by Rob-See-Co, LLC. Innotech™ is a trademark of Syngenta. Power Plus® brand seed is distributed by Burrus. Power Plus® is a registered trademark of Corteva Agriscience.

Corn Technologies

3110	Agrisure® Viptera® 3110 (Vip, CB,LL,GT)
AA	Agrisure® Above (CB,HX,LL,GT), formerly Agrisure® 3120
AM	Optimum® AcreMax®
DV	DuracadeViptera™ (Vip,CB,HX,RW,RW2,LL,GT), formerly Agrisure Duracade® 5222
PCE	PowerCore® Enlist®
QR	Qrome®
STX	SmartStax®
STXP	SmartStax® Pro with RNAi Technology
TRE	Trecepta®
VT2P	VT Double PRO®
VT2PDG	DroughtGard® with VT Double PRO®

NOTE: The refuge component genetics may vary in a refuge blend seed product.

Corn Seed Treatments*

NA	Not Available
AC,P2	Acceleron® 250
AC,P5	Acceleron® 500
AC,P5V	Acceleron® Poncho 500/Votivo
AC,P5V,B300	Acceleron® Poncho 500/Votivo with B-300 SAT
AC,P5V,EDC-B	Acceleron® BASIC Poncho 500/Votivo with Enhanced Disease Control
AC,P5V,EDC-EL	Acceleron® ELITE Poncho 500/Votivo with Enhanced Disease Control
AC,P5V,SU+Zn	Acceleron® Poncho 500/Votivo, StepUp SP, StepUp Zn
AC,P5V,Va	Acceleron® Poncho 500/Votivo, Vayantis®
AVC	Avicta® Complete Corn
AVC,C1,Va	Avicta® Complete 1250 with Vayantis®
AVC,C2,CM,C5,Vi,Va	Avicta® Complete 250, CruiserMaxx 500, Vibrance®, Vayantis®
BPS	Burrus PowerShield
CM,C2	CruiserMaxx® 250
CM,C2,Vi	CruiserMaxx® 250 with Vibrance
CM,C2,Vi,Va	CruiserMaxx® 250 with Vibrance, Vayantis®
CM,C5,Va	CruiserMaxx® 500 with Vayantis®
HC	Hefty Complete
Lum, L1	LumiGEN, Lumisure 1250
Lum,P5V	LumiGEN™ Poncho 500/Votivo

* Seed treatments may include unspecified plant health promoting components.