

Test by: M&D Seed Research, LLC Van Buren, IN

2023 Corn Grain Top 30 Harvest Report

Ohio Northwest [OHNW] ARCHBOLD, OH
Rob-See-Co, John King, Fulton County, OH 43567

Early-Season Test	103 - 108 Day CRM B2023OHNW01a
Top 30 of 40	For Gross Income (Sorted by Yield) Average of (4) Replications
PREV. CROP/HERB:	Soybeans / Flexstar
SOIL DESCRIPTION:	Haskins loam, moderately drained, non-irrigated
SOIL CONDITION:	Conventional W/ Fall Till, high P, very high K, 5.1 pH, 2.1% OM, 13.0 CEC
PEST MANAGEMENT:	Acuron, Round Up
FERTILITY - Applied N:	60 Spring, 150 Sidedress
Applied N-P-K (units):	210-0-0
SEEDED - RATE - ROW:	May 18 33.6 /A 30" spacing
HARVESTED - STAND:	Nov 1 33.4 /A

TEST COMMENTS:

This is a high fertility, well-drained site that always produces big yielding plots. The plot started off well with a mid-May planting that had good emergence and early season growth. A dry May helped the corn get good roots under it with more rains mid- and late-summer that aided in filling cobs with deep kernels. The plot was drier at harvest than other sites and was standing well with healthy stalks.

Company/Brand	Product/Brand	Technol.†	RM	Yield Bu/A ↓	Moisture %	Lodging %	Stand (x 1000)	Gross Income \$/Acre	Rank
Partners Brand	PB 7928-VT2PRIB ↗	VT2P	109	279.6	20.1	1	33.5	1137	1
Dyna-Gro	D48VC84 ↗	VT2P	108	271.4	19.4	1	33.5	1111	3
Dyna-Gro	D47SS93 ↗	STX	107	271.0	18.3	1	33.2	1121	2
Integra	5802 VT2PRIB ↗	VT2P	108	270.2	19.1	1	33.5	1109	4
Wyckoff	2583 TRE RIB ↗	TRE	108	268.1	19.6	1	33.2	1095	5
Seed Consultants	SC1084AM ↗	AM	108	266.4	20.0	1	32.8	1085	8
Seed Consultants	SC1042Q ↗	QR	104	265.7	19.2	1	33.5	1090	6
M & W Seeds	MW C104 PWR GC ↗	PC	104	263.4	18.7	1	33.5	1086	7
Buckeye Hybrids	RR8815 VT2P ↗	VT2P	108	262.8	20.3	1	33.2	1067	11
Ebberts	7209TR RIB ↗	TRE	108	260.3	18.8	1	33.5	1072	10
FS InVision	FS 5725X RIB ↗	STX	107	259.7	18.3	1	33.5	1075	9
Integra	5584 PWE ↗	PCE	105	257.0	18.5	1	33.5	1061	13
Ebberts	7188PC ↗	PC	108	256.9	19.9	1	33.5	1047	17
FS InVision	FS 5835V RIB ↗	VT2P	108	256.6	19.8	1	33.5	1047	18
Wyckoff	2432 TRE RIB ↗	TRE	105	255.5	19.1	1	33.2	1049	15
FS InVision	FS 5335P RIB ↗	STXP	103	255.4	18.7	1	33.2	1053	14
Wyckoff	2584 VT2P RIB ↗	VT2P	108	255.2	19.7	1	33.5	1042	19
FS InVision	FS 5525VDG RIB ↗	VT2PDG	105	253.7	16.9	1	33.5	1065	12
Integra	5443 DGVT2PRIB ↗	VT2PDG	104	252.3	17.8	1	33.5	1049	16
Pioneer	P0720AM GC ↗	AM	107	252.3	20.6	1	33.5	1021	24
Wyckoff	2515 VT2P RIB ↗	VT2P	107	251.7	18.6	7	33.5	1039	20
NK Brand	NK0835-AA ↗	AA	108	249.4	19.8	1	33.5	1018	25
Rob-See-Co	RC5694-VT2P ↗	VT2P	106	248.3	18.1	1	33.5	1029	22
Rob-See-Co	RC5422-PCE ↗	PCE	104	248.1	17.9	1	33.5	1030	21
FS InVision	FS 5594X RIB ↗	STX	105	247.3	18.8	1	33.5	1018	26
Pioneer	P0035AM GC ↗	AM	100	247.1	18.9	1	33.5	1017	27
Renk	RK707TRE ↗	TRE	105	247.0	18.3	1	33.5	1022	23
Renk	RK703PWE ↗	PCE	106	245.4	19.9	1	33.5	999	29
Augusta	A2057-3111 ↗	3111	107	245.1	19.2	1	33.5	1006	28
Augusta	A1954 PCE ↗	PCE	104	242.8	19.0	1	33.5	998	30
PIONEER	P0859AM CK	AM	108	238.7	18.8	1	33.5	983	34
				Averages =	250.9	19.0	1	33.4	1031
				LSD (0.10) =	14.4	0.5	ns		
				LSD (0.25) =	7.6	0.3	ns		
				C.V. =	6.3				
				Historic yield: 248.8 bu/a, 7 yr(s)					

Matt Turner

mattturner1979@yahoo.com, (317) 606-9040

Yield & Income Factors: Base Moisture = 15.5% Shrink = 1.3 Drying = \$0.04 Prices: GMO = \$4.25; non-GMO = \$4.75

Report Date: 11/01/2023

† See last page for abbreviation descriptions. Dark colored row identifies the check product found in early- and full-season tests. **Bold** yields are significantly above test average by LSD(0.10). **Italicized** brands exceed the grain moisture limit for this test. **ns** = column values not significantly different. ↗ Links to full product yield results at www.firstseedtests.com

©2023, All rights reserved to Farmers' Independent Research of Seed Technologies, LLC.

Additional reports available at www.firstseedtests.com

Test by: M&D Seed Research, LLC Van Buren, IN

2023 Corn Grain Top 30 Harvest Report

Ohio Northwest [OHNW] ARCHBOLD, OH
Rob-See-Co, John King, Fulton County, OH 43567

Full-Season Test 109 - 112 Day CRM
B2023OHNW01b

Top 30 of 40 For Gross Income
(Sorted by Yield)
Average of (4) Replications

PREV. CROP/HERB: Soybeans / Flexstar

SOIL DESCRIPTION: Haskins loam, moderately drained, non-irrigated

SOIL CONDITION: Conventional W/ Fall Till, high P, very high K, 5.1 pH, 2.1% OM, 13.0 CEC

PEST MANAGEMENT: Acuron, Round Up

FERTILITY - Applied N: 60 Spring, 150 Sidedress

Applied N-P-K (units): 210-0-0

SEEDED - RATE - ROW: May 18 33.6 /A 30" spacing

HARVESTED - STAND: Nov 1 33.2 /A

TEST COMMENTS:

This is a high fertility, well-drained site that always produces big yielding plots. The plot started off well with a mid-May planting that had good emergence and early season growth. A dry May helped the corn get good roots under it with more rains mid- and late-summer that aided in filling cobs with deep kernels. The plot was drier at harvest than other sites and was standing well with healthy stalks.

Company/Brand	Product/Brand	Technol.†	RM	Yield Bu/A ↓	Moisture %	Lodging %	Stand (x 1000)	Gross Income \$/Acre	Rank
FS InVision	FS 6017V RIB ↗	VT2P	110	278.9	20.1	1	33.2	1134	1
Integra	6274 VT2PRIB ↗	VT2P	112	274.7	21.3	1	33.5	1104	4
Integra	6061 STXRIB ↗	STX	110	274.4	19.7	1	33.5	1120	2
FS InVision	FS 6137PC ↗	PCE	111	271.6	20.5	1	33.5	1100	6
Rob-See-Co	RC6131-TRE ↗	TRE	111	269.4	21.7	1	33.2	1078	10
Ebberts	6883DGV2P RIB ↗	VT2PDG	112	269.3	19.6	1	33.5	1101	5
Renk	RK766SSPRO ↗	STXP	109	269.3	19.2	1	33.5	1105	3
Rob-See-Co	RC6232-DGV2P ↗	VT2PDG	112	269.1	22.8	1	33.5	1066	14
Wyckoff	2711 VT2P RIB ↗	VT2P	112	267.1	21.4	1	33.5	1072	12
Ebberts	6220VT2P RIB ↗	VT2P	110	266.9	19.4	1	33.5	1092	7
Wyckoff	2679 DGV2P RIB ↗	VT2PDG	112	266.9	19.6	1	33.5	1091	8
FS InVision	FS 6217T RIB ↗	TRE	112	266.4	20.7	1	33.2	1077	11
Augusta	A2262-3110 ↗	3110	112	265.8	22.0	1	33.5	1061	17
Renk	RK773TRE ↗	TRE	109	263.8	19.2	1	33.2	1082	9
FS InVision	FS 6025X RIB ↗	STX	110	262.8	19.9	1	33.5	1071	13
Golden Harvest	G11V76-AA ↗	AA	111	262.8	21.2	1	33.5	1057	19
Seed Consultants	SC1112AM ↗	AM	111	262.6	21.1	1	33.2	1057	20
Wyckoff	2678 VT2P RIB ↗	VT2P	111	262.5	21.8	1	33.5	1050	24
Seed Consultants	SC1093AM ↗	AM	109	262.3	21.2	1	32.5	1055	21
Augusta	A2061-PWE ↗	PCE	111	262.1	20.2	1	32.5	1065	15
Wyckoff	2656 PCE ↗	PCE	111	260.0	20.6	1	33.5	1052	23
Renk	RK811PWE ↗	PCE	111	259.7	19.6	1	33.2	1061	18
Buckeye Hybrids	RR9206 VT2P ↗	VT2P	112	259.2	20.1	1	33.5	1054	22
Integra	6244 PWE ↗	PCE	112	258.8	19.1	1	33.5	1063	16
Ebberts	6444VT2P RIB ↗	VT2P	114	256.2	21.9	1	33.5	1023	29
Wyckoff	2667 DGV2P RIB ↗	VT2PDG	111	255.1	22.4	1	33.5	1014	31
NK Brand	NK1040-AA ↗	AA	110	254.5	20.3	1	33.2	1033	25
Seed Consultants	SC1122Q ↗	QR	112	254.2	20.8	1	33.5	1027	27
Dyna-Gro	D50VC09RIB ↗	VT2P	110	252.2	19.7	1	32.5	1029	26
NK Brand	NK1188-AA ↗	AA	111	250.9	20.6	1	33.5	1015	30
PIONEER	P0859AM CK	AM	108	249.8	19.1	1	33.5	1026	28

Matt Turner

mattturner1979@yahoo.com, (317) 606-9040

Averages = **258.9** **20.7** **1** **33.2** **1046**

LSD (0.10) = 12.1 0.6 ns

LSD (0.25) = 6.3 0.3 ns

C.V. = 5.1 Historic yield: 248.8 bu/a, 7 yr(s)

Yield & Income Factors: Base Moisture = 15.5% Shrink = 1.3 Drying = \$0.04 Prices: GMO = \$4.25; non-GMO = \$4.75

Report Date: 11/01/2023

† See last page for abbreviation descriptions. Dark colored row identifies the check product found in early- and full-season tests. **Bold** yields are significantly above test average by LSD(0.10). **Italicized** brands exceed the grain moisture limit for this test. **ns** = column values not significantly different. ↗ Links to full product yield results at www.firstseedtests.com

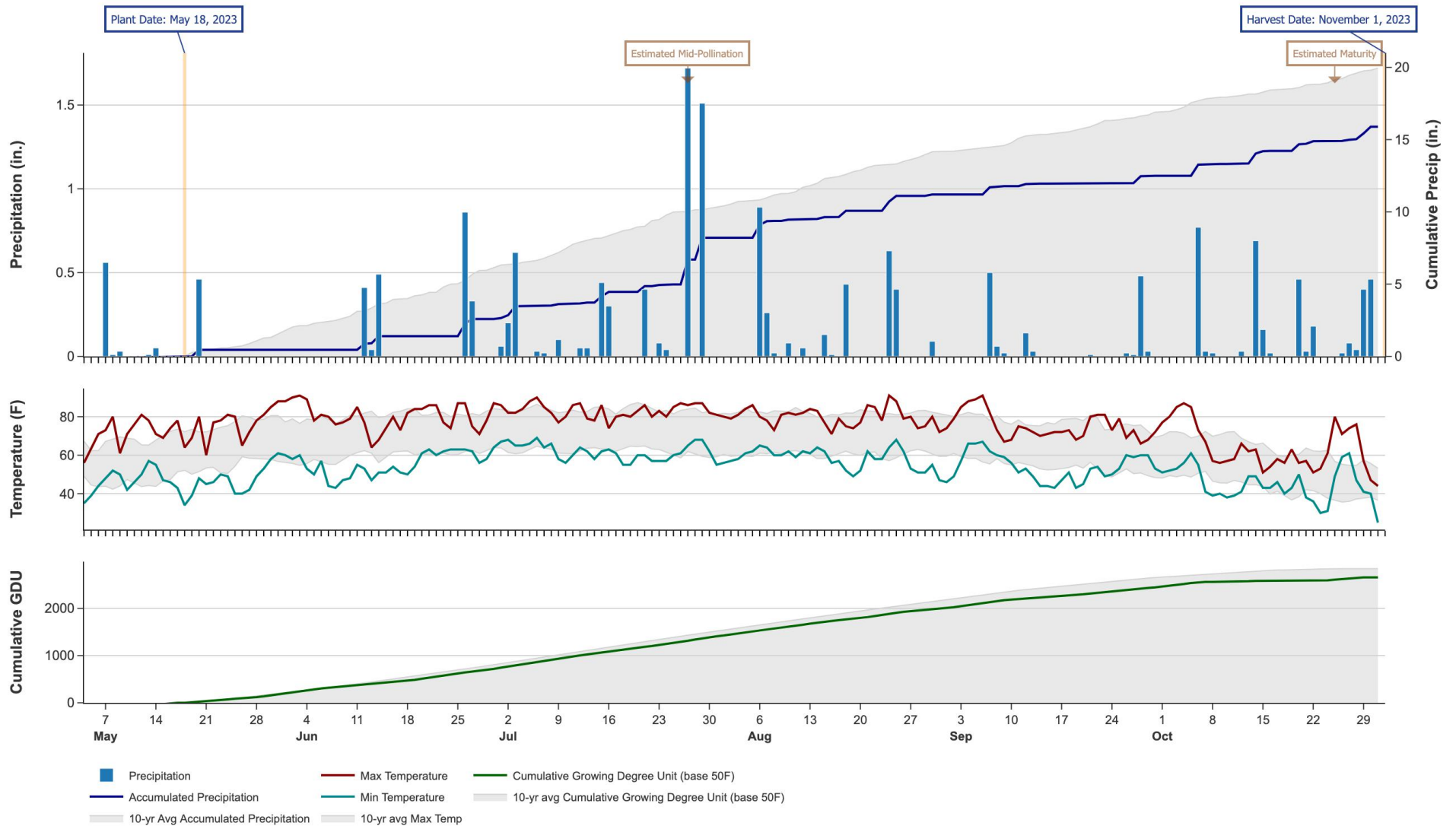
©2023, All rights reserved to Farmers' Independent Research of Seed Technologies, LLC.

Additional reports available at www.firstseedtests.com

2023 Corn - Ohio Northwest [OHNW]

Weather Conditions Summary at ARCHBOLD, OH

Monthly Total	May*	Jun	Jul	Aug	Sep	Oct*	Total
Precip (in) (Diff)	1.1 3.5 (-2.4)	2.1 4.6 (-2.5)	5.6 4.2 (+1.5)	3.0 3.9 (-0.9)	1.3 2.7 (-1.4)	3.4 3.0 (+0.4)	16.6 21.9 (-5.4)
GDU Avg (Diff)	338 342 (-4)	536 602 (-66)	689 708 (-19)	590 660 (-70)	448 476 (-28)	210 187 (+22)	2811 2977 (-166)



* First monthly total starts on the date 14 days prior to planting and final monthly total ends on the harvest date.

Note: Weather information from PRISM Climate Group. Data may be revised by the provider after retrieval. FIRST will not revise or update reports to reflect any weather data changes. For information purposes only.

2023 Corn - Ohio Northwest [OHNW]

Early-Season Test Products (40 Total)

Company/Brand	Product/Brand	Technology	RIB	RM	Seed Treat.
Augusta	A1954 PCE	PCE	N	104	CM,C2
Augusta	A1958-DV	DV	N	108	CM,C2
Augusta	A2057-3111	3111	N	107	CM,C2
Buckeye Hybrids	RR8815 VT2P	VT2P	N	108	AC,P5,B360
Dyna-Gro	D44DC73RIB	VT2PDG	Y	104	AC,P5V
Dyna-Gro	D47SS93	STX	N	107	AC,P5V
Dyna-Gro	D48VC84	VT2P	N	108	AC,P5V
Ebberts	7188PC	PC	N	108	Ebberts
Ebberts	7209TR RIB	TRE	Y	108	Ebberts
Ebberts	9779SSX RIB	STX	Y	108	Ebberts
FS InVision	FS 5335P RIB	STXP	Y	103	AC,P5V,EDC-EL
FS InVision	FS 5525VDG RIB	VT2PDG	Y	105	AC,P5V,EDC-EL
FS InVision	FS 5594X RIB	STX	Y	105	AC,P5V,EDC-EL
FS InVision	FS 5725X RIB	STX	Y	107	AC,P5V,EDC-EL
FS InVision	FS 5835V RIB	VT2P	Y	108	AC,P5V,EDC-EL
Golden Harvest	G03B19-AA	AA	Y	103	CM,C5,Va
Golden Harvest	G08B38-AA	AA	Y	108	CM,C5,Va
Integra	5443 DGVT2PRIB	VT2PDG	N	104	AC,P5V,SU+Zn
Integra	5584 PWE	PCE	N	105	AC,P5V
Integra	5802 VT2PRIB	VT2P	Y	108	AC,P5V,SU+Zn
M & W Seeds	MW 44V83 GC	V	Y	107	Ti
M & W Seeds	MW C104 PWR GC	PC	Y	104	Ti
NK Brand	NK0835-AA	AA	Y	108	CM,C5,Va
Partners Brand	PB 7928-VT2PRIB	VT2P	Y	109	ACi
Pioneer	P0035AM GC	AM	Y	100	Lum
Pioneer	P0720AM GC	AM	Y	107	Lum, L1
Pioneer	P0859AM CK	AM	Y	108	Lum
Renk	RK625DGV2P	VT2PDG	N	104	AC,P2
Renk	RK703PWE	PCE	N	106	Lum,P5V
Renk	RK707TRE	TRE	N	105	AC,P5V,B300
Rob-See-Co	RC5422-PCE	PCE	N	104	CM,C2,Vi,Va
Rob-See-Co	RC5694-VT2P	VT2P	Y	106	AC,P2
Seed Consultants	SC1042Q	QR	Y	104	Lum, L1
Seed Consultants	SC1054AM	AM	Y	105	Lum, L1
Seed Consultants	SC1084AM	AM	Y	108	Lum, L1
Wyckoff	2432 TRE RIB	TRE	Y	105	AC,P5V
Wyckoff	2515 VT2P RIB	VT2P	Y	107	AC,P2
Wyckoff	2583 TRE RIB	TRE	Y	108	AC,P2
Wyckoff	2584 VT2P RIB	VT2P	Y	108	AC,P2
Wyckoff	2632 SS RIB	STX	Y	108	AC,P5V

* FIRST does not inspect products for refuge blend. N* indicates the product was entered without a refuge component by the sponsoring seed company. Prior year entries may contain refuge blend.

2023 Corn - Ohio Northwest [OHNW]

Full-Season Test Products (40 Total)

Company/Brand	Product/Brand	Technology	RIB	RM	Seed Treat.
Augusta	A1160-AA	AA	N	110	CM,C2
Augusta	A2061-PWE	PCE	N	111	CM,C2
Augusta	A2262-3110	3110	N	112	CM,C2
Augusta	A6162-DV	DV	N*	112	CM,C2
Buckeye Hybrids	RR9012 AA	AA	Y	110	CM,C2,Vi,Va
Buckeye Hybrids	RR9206 VT2P	VT2P	Y	112	CM,C2,Vi,Va
Dyna-Gro	D50VC09RIB	VT2P	Y*	110	AC,P5V
Ebberts	6220VT2P RIB	VT2P	Y	110	Ebberts
Ebberts	6444VT2P RIB	VT2P	Y	114	Ebberts
Ebberts	6883DGV2P RIB	VT2PDG	Y	112	Ebberts
FS InVision	FS 6017V RIB	VT2P	Y	110	AC,P5V,EDC-EL
FS InVision	FS 6025X RIB	STX	Y	110	AC,P5V,EDC-EL
FS InVision	FS 6133VDG RIB	VT2PDG	Y	111	AC,P5V,EDC-EL
FS InVision	FS 6137PC	PCE	N	111	CM,C2,Vi,Va
FS InVision	FS 6217T RIB	TRE	Y	112	AC,P5V,EDC-EL
Golden Harvest	G10B61-AA	AA	Y	110	CM,C5,Va
Golden Harvest	G10L16-DV	DV	Y	110	AVC,C1,Va
Golden Harvest	G11V76-AA	AA	Y	111	CM,C5,Va
Golden Harvest	G12S75-D	D	Y	112	AVC,C1,Va
Integra	6061 STXRIB	STX	Y	110	AC,P5V,SU+Zn
Integra	6244 PWE	PCE	N	112	AC,P5V
Integra	6274 VT2PRIB	VT2P	Y	112	AC,P5V
NK Brand	NK1040-AA	AA	Y	110	CM,C5,Va
NK Brand	NK1082-DV	DV	Y	110	AVC,C1,Va
NK Brand	NK1188-AA	AA	Y	111	CM,C5,Va
Pioneer	P0859AM CK	AM	Y	108	Lum
Renk	RK766SSPRO	STXP	N	109	AC,P5V,B300
Renk	RK773TRE	TRE	N	109	AC,P5V,B300
Renk	RK811PWE	PCE	N	111	Lum,P5V
Rob-See-Co	RC5929-VT2P	VT2P	Y	109	AC,P5V
Rob-See-Co	RC6131-TRE	TRE	Y	111	CM,C2,Vi,Va
Rob-See-Co	RC6232-DGV2P	VT2PDG	Y	112	AC250
Seed Consultants	SC1093AM	AM	Y	109	Lum, L1
Seed Consultants	SC1112AM	AM	Y	111	Lum, L1
Seed Consultants	SC1122Q	QR	Y	112	Lum, L1
Wyckoff	2656 PCE	PCE	N	111	CM,C2,Vi,Va
Wyckoff	2667 DGV2P RIB	VT2PDG	Y	111	AC,P2
Wyckoff	2678 VT2P RIB	VT2P	Y	111	AC,P2
Wyckoff	2679 DGV2P RIB	VT2PDG	Y	112	AC,P2
Wyckoff	2711 VT2P RIB	VT2P	Y	112	AC,P2

* FIRST does not inspect products for refuge blend. N* indicates the product was entered without a refuge component by the sponsoring seed company. Prior year entries may contain refuge blend.

Footnotes and Abbreviations Descriptions

Brand Footnotes

CK	Identifies a check product included in early- and full-season tests.
GC	Grower Comparison product included by FIRST when space permits.
^	Innotech™ brand seed is distributed by Rob-See-Co, LLC. Innotech™ is a trademark of Syngenta. Power Plus® brand seed is distributed by Burrus. Power Plus® is a registered trademark of Corteva Agriscience.

Corn Technologies

3110	Agrisure® Viptera® 3110 (Vip, CB,LL,GT)
3111	Agrisure® Viptera® 3111 (Vip,CB,RW,LL,GT)
AA	Agrisure® Above (CB,HX,LL,GT), formerly Agrisure® 3120
AM	Optimum® AcreMax®
D	Duracade™ (CB,HX,RW,RW2,LL,GT), formerly Agrisure Duracade® 5122
DV	DuracadeViptera™ (Vip,CB,HX,RW,RW2,LL,GT), formerly Agrisure Duracade® 5222
PC	PowerCore®
PCE	PowerCore® Enlist®
QR	Qrome®
STX	SmartStax®
STXP	SmartStax® Pro with RNAi Technology
TRE	Trecepta®
V	Viptera™ (Vip,CB,HX,LL,GT), formerly Agrisure Viptera® 3220
VT2P	VT Double PRO®
VT2PDG	DroughtGard® with VT Double PRO®

NOTE: The refuge component genetics may vary in a refuge blend seed product.

Corn Seed Treatments*

NA	Not Available
AC250	Acceleron® 250
ACi	Acceleron® Standard Insecticide-Fungicide
AC,P2	Acceleron® 250
AC,P5,B360	Acceleron® 500 with BioRise™ B-360 ST
AC,P5V	Acceleron® Poncho 500/Votivo
AC,P5V,B300	Acceleron® Poncho 500/Votivo with B-300 SAT
AC,P5V,EDC-EL	Acceleron® ELITE Poncho 500/Votivo with Enhanced Disease Control
AC,P5V,SU+Zn	Acceleron® Poncho 500/Votivo, StepUp SP, StepUp Zn
AVC,C1,Va	Avicta® Complete 1250 with Vayantis®
CM,C2	CruiserMaxx® 250
CM,C2,Vi,Va	CruiserMaxx® 250 with Vibrance, Vayantis®
CM,C5,Va	CruiserMaxx® 500 with Vayantis®
Ebberts	Ebberts Complete Corn (Ebberts Field Seeds)
Lum	LumiGEN™ (Corteva Agriscience)
Lum, L1	LumiGEN, Lumisure 1250
Lum,P5V	LumiGEN™ Poncho 500/Votivo
Ti	Titan Corn 250 (M & W Seeds)

*Seed treatments may include unspecified plant health promoting components.