

Test by: M.A.I.T.S. Mount Joy, PA

2023 Corn Grain Top 30 Harvest Report

Pennsylvania Southeast [PASE] ELVERSON, PA
Jim and Joe Hertzler, Chester County, PA

All-Season Test	105 - 115 Day CRM B2023PASE08
Top 30 of 48	For Gross Income (Sorted by Yield) Average of (3) Replications
PREV. CROP/HERB:	Soybeans / Glyphosate
SOIL DESCRIPTION:	Gladstone loam, well drained, non-irrigated
SOIL CONDITION:	No-Till, medium P, medium K, 5.6 pH, 2.7% OM, 9.5 CEC
PEST MANAGEMENT:	Lumax, Glyphosate, Atrazine, Peak, Ethos, Xyway, Miravis,
FERTILITY - Applied N:	121 Planter, 80 Sidedress
Applied N-P-K (units):	201-52-0
SEEDED - RATE - ROW:	May 6 32.5 /A 30" spacing
HARVESTED - STAND:	Nov 10 28.2 /A

TEST COMMENTS:

Planting conditions were good, with good soil moisture in the seedbed with average temperatures. Emergence was uniform and the crop got off to a good start. Rainfall for the summer was below average but did come when needed. Weed control was excellent, disease pressure consisted of mainly gray leaf spot, anthracnose, with tar spot coming in late. No yield or standability problems were noticed. The overall rating of the plot is an 8 out of 10. (10=best)

Company/Brand	Product/Brand	Technol.†	RM	Yield Bu/A ↓	Moisture %	Lodging %	Stand (x 1000)	Gross Income \$/Acre	Rank
DeKalb	DKC62-70RIB GC ↗	VT2P	112	290.2	19.3	3	28.9	1446	1
Revere	1307 TCRIB ↗	TRE	113	288.4	19.1	2	27.7	1439	2
Seedway	SW 1021VT ↗	VT2P	110	286.7	19.2	1	25.7	1429	3
Revere	0918 VT2PRIB ↗	VT2P	109	281.8	20.0	2	30.0	1399	4
Mid-Atlantic	MA8108VT2PRIB ↗	VT2P	110	273.9	18.7	2	29.8	1369	5
Seedway	SW 1345TR ↗	TRE	113	273.0	19.1	1	28.3	1361	6
Seedway	SW 1421VT ↗	VT2P	114	272.9	21.3	2	29.2	1346	11
Seed Consultants	SC1093AM ↗	AM	109	272.4	20.3	2	29.2	1350	8
Mid-Atlantic	MA8110TRECIB ↗	TRE	111	272.2	19.4	2	26.7	1356	7
Seed Consultants	SC1112AM ↗	AM	111	271.7	20.3	2	29.3	1347	10
Mid-Atlantic	MA8136DGV2PRIB ↗	VT2PDG	113	270.9	20.7	1	28.5	1340	13
Augusta	A1961 TRE ↗	TRE	111	270.3	19.0	1	29.0	1349	9
Hefty	H6354 ↗	STX	113	270.0	19.5	3	28.0	1344	12
Hubner	H09G056 ↗	VT2PDG	109	268.5	20.5	1	25.9	1330	15
Dyna-Gro	D53VC54RIB ↗	VT2P	113	268.3	20.3	1	28.6	1330	16
Pioneer	P1136AM GC ↗	AM	111	268.0	19.3	4	28.4	1336	14
Dyna-Gro	D53TC23RIB ↗	TRE	113	266.7	19.5	1	25.8	1328	17
Golden Harvest	G14B32-DV ↗	DV	114	264.9	20.3	9	28.5	1313	19
Hefty	H5655 ↗	TRE	106	263.6	18.2	1	28.8	1321	18
Augusta	A1259-5222 ↗	DV	109	263.1	19.8	4	28.8	1308	21
Hubner	H1330S ↗	STX	113	262.4	20.0	1	30.3	1303	24
Golden Harvest	G13B17-AA ↗	AA	113	262.4	19.4	2	30.2	1307	22
Seed Consultants	SC1154AM ↗	AM	115	262.2	19.5	2	28.8	1305	23
Hefty	H6145 TRERIB ↗	TRE	111	261.5	19.8	4	28.8	1300	26
Revere	0518 VT2PRIB ↗	VT2P	105	260.2	16.8	3	28.3	1313	20
Chemgro	7144PC ↗	PCE	111	260.2	19.2	2	25.5	1297	27
Seed Consultants	SC1122Q ↗	QR	112	260.1	19.3	2	29.3	1296	28
Dyna-Gro	D47SS93 ↗	STX	107	258.4	17.3	6	28.3	1301	25
Hubner	H6663RCSS ↗	STX	113	257.2	21.3	1	29.6	1269	30
Hubner	H1139S ↗	STX	111	255.5	19.8	2	28.8	1270	29

Robin Kauffman

Rob Kauffman

rkmait@aol.com, (717) 413-0763

Averages = **259.9** **19.7** **2** **28.2** **1293**

LSD (0.10) = 17.7 1.1 1

LSD (0.25) = 9.3 0.6 1

C.V. = 6.5

Historic yield: 205.0 bu/a, 22 yr(s)

Yield & Income Factors:

Base Moisture = 15.0%

Shrink = 1.3

Drying = \$0.025

Prices: GMO = \$5.09

Report Date: 11/18/2023

† See last page for abbreviation descriptions. Dark colored row identifies the check product found in early- and full-season tests. **Bold** yields are significantly above test average by LSD(0.10). **Italicized** brands exceed the grain moisture limit for this test. **ns** = column values not significantly different. ↗ Links to full product yield results at www.firstseedtests.com

©2023, All rights reserved to Farmers' Independent Research of Seed Technologies, LLC.

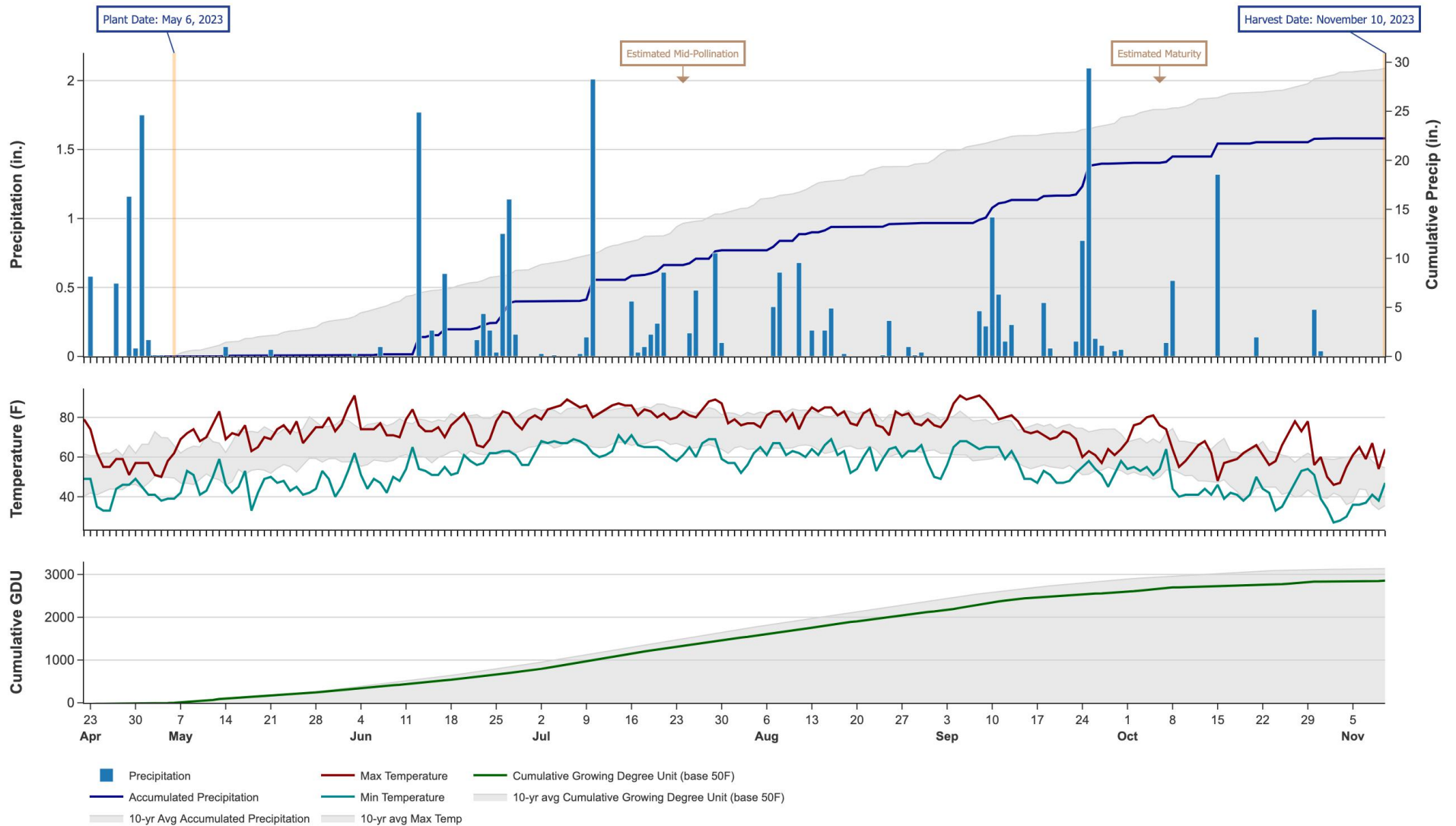
Additional reports available at www.firstseedtests.com

2023 Corn - Pennsylvania Southeast [PASE]

Weather Conditions Summary at ELVERSON, PA

Weather Data Retrieved: 11/18/2023

Monthly Total	Apr*	May	Jun	Jul	Aug	Sep	Oct	Nov*	Total
Precip (in) (Diff)	2.3 0.9 (+1.5)	2.0 4.8 (-2.8)	5.5 5.2 (+0.3)	5.2 5.9 (-0.7)	2.8 5.0 (-2.2)	6.1 4.7 (+1.5)	2.5 4.0 (-1.5)	0.0 1.0 (-1.0)	26.4 31.4 (-5.0)
GDU Avg (Diff)	39 54 (-15)	292 366 (-74)	466 589 (-123)	743 774 (-31)	632 707 (-75)	458 502 (-44)	250 232 (+17)	23 15 (+7)	2903 3244 (-341)



* First monthly total starts on the date 14 days prior to planting and final monthly total ends on the harvest date.

Note: Weather information from PRISM Climate Group. Data may be revised by the provider after retrieval. FIRST will not revise or update reports to reflect any weather data changes. For information purposes only.

2023 Corn - Pennsylvania Southeast [PASE]

All-Season Test Products (48 Total)

Company/Brand	Product/Brand	Technology	RIB	RM	Seed Treat.
Augusta	A1259-5222	DV	Y*	109	CM,C2
Augusta	A1365-PWE	PCE	N	115	CM,C2
Augusta	A1961 TRE	TRE	N	111	Treated
Augusta	A1964-3110	3110	N	114	CM,C2
Augusta	A2064-DV	DV	Y*	114	Treated
Augusta	A2164-PWE	PCE	N	114	CM,C2
Augusta	A4463 VT2P	VT2P	N	113	CM,C2
Chemgro	6725RDP	VT2P	Y	107	AC250
Chemgro	7035RDP	VT2P	Y	110	AC250
Chemgro	7144PC	PCE	N	111	CM,C2,Vi,Va
Chemgro	7335RDD	VT2PDG	Y	113	AC250
DeKalb	DKC62-70RIB GC	VT2P	Y	112	AC,P5V,EDC-EL
Dyna-Gro	D47SS93	STX	N	107	AC,P5V
Dyna-Gro	D53TC23RIB	TRE	Y	113	AC,P5V
Dyna-Gro	D53VC54RIB	VT2P	Y	113	AC,P5V
Golden Harvest	G13B17-AA	AA	Y	113	CM,C5,Va
Golden Harvest	G14B32-DV	DV	Y	114	AVC,C1,Va
Hefty	H5655	TRE	N	106	HC
Hefty	H5944	STX	N	109	HC
Hefty	H6145 TRERIB	TRE	Y	111	HC
Hefty	H6354	STX	N	113	HC
Hubner	H09G056	VT2PDG	Y	109	AC,P5,B360
Hubner	H1139S	STX	Y	111	AC,P5V,B360
Hubner	H1330S	STX	Y	113	AC,P5V,B360
Hubner	H6390RCSS	STX	Y	108	AC,P5V,B360
Hubner	H6663RCSS	STX	Y	113	AC,P5V
Mid-Atlantic	MA5124VIP3110	3110	N	112	CM,C2
Mid-Atlantic	MA6094PWE	PCE	N	109	CM,C2
Mid-Atlantic	MA6148PWE	PCE	N	114	CM,C2
Mid-Atlantic	MA6153PWE	PCE	N	115	CM,C2
Mid-Atlantic	MA8108VT2PRIB	VT2P	Y	110	AC,P2
Mid-Atlantic	MA8110TRECRIB	TRE	Y*	111	AC,P2
Mid-Atlantic	MA8136DGVT2PRIB	VT2PDG	Y	113	AC,P2
Pine Creek	R5917D	D	Y	109	Treated
Pioneer	P1136AM GC	AM	Y	111	Lum
Revere	0518 VT2PRIB	VT2P	Y	105	Treated
Revere	0707 DGVT2PRIB	VT2PDG	Y	107	Treated
Revere	0918 VT2PRIB	VT2P	Y	109	Treated
Revere	1307 TCRIB	TRE	Y	113	Treated
Revere	1577 VT2PRIB	VT2P	Y	115	Treated
Seed Consultants	SC1093AM	AM	Y	109	Lum, L1
Seed Consultants	SC1112AM	AM	Y	111	Lum, L1

Company/Brand	Brand/Product	Technology	RIB	RM	Seed Treat.
Seed Consultants	SC1122Q	QR	Y	112	Lum, L1
Seed Consultants	SC1134AM	AM	Y	113	Lum, L1
Seed Consultants	SC1154AM	AM	Y	115	Lum, L1
Seedway	SW 1021VT	VT2P	Y	110	AC,P5
Seedway	SW 1345TR	TRE	Y	113	AC,P5
Seedway	SW 1421VT	VT2P	Y	114	AC,P5

* FIRST does not inspect products for refuge blend. N* indicates the product was entered without a refuge component by the sponsoring seed company. Prior year entries may contain refuge blend.

Footnotes and Abbreviations Descriptions

Brand Footnotes

CK	Identifies a check product included in early- and full-season tests.
GC	Grower Comparison product included by FIRST when space permits.
^	Innotech™ brand seed is distributed by Rob-See-Co, LLC. Innotech™ is a trademark of Syngenta. Power Plus® brand seed is distributed by Burrus. Power Plus® is a registered trademark of Corteva Agriscience.

Corn Technologies

3110	Agrisure® Viptera® 3110 (Vip, CB,LL,GT)
AA	Agrisure® Above (CB,HX,LL,GT), formerly Agrisure® 3120
AM	Optimum® AcreMax®
D	Duracade™ (CB,HX,RW,RW2,LL,GT), formerly Agrisure Duracade® 5122
DV	DuracadeViptera™ (Vip,CB,HX,RW,RW2,LL,GT), formerly Agrisure Duracade® 5222
PCE	PowerCore® Enlist®
QR	Qrome®
STX	SmartStax®
TRE	Trecepta®
VT2P	VT Double PRO®
VT2PDG	DroughtGard® with VT Double PRO®

NOTE: The refuge component genetics may vary in a refuge blend seed product.

Corn Seed Treatments*

NA	Not Available
AC250	Acceleron® 250
AC,P2	Acceleron® 250
AC,P5	Acceleron® 500
AC,P5,B360	Acceleron® 500 with BioRise™ B-360 ST
AC,P5V	Acceleron® Poncho 500/Votivo
AC,P5V,B360	Acceleron® Poncho 500/Votivo with B-360 SAT
AC,P5V,EDC-EL	Acceleron® ELITE Poncho 500/Votivo with Enhanced Disease Control
AVC,C1,Va	Avicta® Complete 1250 with Vayantis®
CM,C2	CruiserMaxx® 250
CM,C2,Vi,Va	CruiserMaxx® 250 with Vibrance, Vayantis®
CM,C5,Va	CruiserMaxx® 500 with Vayantis®
HC	Hefty Complete
Lum	LumiGEN™ (Corteva Agriscience)
Lum, L1	LumiGEN, Lumisure 1250
Treated	Treated seed, unspecified

* Seed treatments may include unspecified plant health promoting components.