

# 2023 Silage Harvest Report for Pennsylvania Central [ PACE ]

Charles Groff, Mifflin County, PA 17051 [ MCVEYTOWN ]



Test by: Mid-Atlantic Independent Tech. Svcs., Mount Joy, PA

PREV. CROP/HERB: Corn / Glyphosate, Bicep, Capreno, Atrazine, Explorer

SOIL INFORMATION: Morrison sandy loam, well drained, conventional w/o fall till, very high P, very high K, 6.2 pH, 3.5% OM, irrigated

UNITS N-P-K Applied: 200-110-155, N Applied: 100 Fall, 100 Spring

PEST MANAGEMENT: Glyphosate, Bicep, Atrazine, Ethos

SEEDED - RATE: May 19 32,500 /A

HARVESTED - STAND: Sep 20 26,800 /A

105 - 116 Day CRM

L2023PACE23

## Top 30 of 36 Products Tested, 3 Rep. Yield Average

| Company/Brand    | Product/Brand† | Technology† | CRM | Yield at         |                | Dry Matter (%) | Crude Protein (% DM) | ENERGY        |                    |               | FIBER      |                      |                  | Milk/Ton DM†† |      | Milk/Acre (Lbs)↓ |
|------------------|----------------|-------------|-----|------------------|----------------|----------------|----------------------|---------------|--------------------|---------------|------------|----------------------|------------------|---------------|------|------------------|
|                  |                |             |     | 65% H2O (Tons/A) | Stand (x1,000) |                |                      | Starch (% DM) | In-Situ SD 7 h (%) | NEL (Mcal/lb) | NDF (% DM) | NDFd 30h* (% of NDF) | uNDF 240 h (%DM) | (Lbs)         | Rank |                  |
| Revere           | 0918 SSXRIB    | STX         | 109 | 31.0             | 29.2           | 34.6           | 8.1                  | 39.6          | 59.14              | 0.79          | 34.4       | 54.1                 | 10.8             | 3,586         | 3    | 38,903           |
| Hubner           | H6663RCSS      | STX         | 113 | 29.3             | 23.9           | 34.4           | 8.8                  | 36.9          | 61.93              | 0.80          | 35.8       | 59.1                 | 11.0             | 3,643         | 2    | 37,403           |
| Seed Consultants | SC1094Q        | QR          | 109 | 28.2             | 28.1           | 33.1           | 9.0                  | 40.5          | 58.84              | 0.82          | 32.1       | 60.2                 | 9.0              | 3,663         | 1    | 36,194           |
| Chemgro          | 7539D4Z        | D           | 115 | 30.6             | 26.6           | 34.4           | 7.9                  | 33.0          | 56.88              | 0.76          | 39.1       | 55.3                 | 11.8             | 3,331         | 21   | 35,633           |
| Seed Consultants | SC1134AM       | AM          | 113 | 28.2             | 26.3           | 33.1           | 8.8                  | 35.2          | 64.15              | 0.78          | 37.1       | 55.4                 | 11.3             | 3,425         | 13   | 33,809           |
| Mid-Atlantic     | MA5103D        | D           | 110 | 28.5             | 26.2           | 33.2           | 7.9                  | 35.0          | 66.66              | 0.76          | 38.0       | 56.1                 | 11.9             | 3,357         | 17   | 33,487           |
| Hubner           | H6755RCSS      | STX         | 114 | 28.0             | 27.1           | 32.9           | 8.1                  | 35.3          | 66.28              | 0.75          | 38.4       | 53.8                 | 13.6             | 3,404         | 14   | 33,402           |
| Seed Consultants | SCS 1122Q      | QR          | 112 | 29.0             | 28.3           | 30.2           | 8.3                  | 31.8          | 58.17              | 0.74          | 41.2       | 56.2                 | 12.4             | 3,284         | 24   | 33,376           |
| Seed Consultants | SCS 1112AM     | AM          | 111 | 27.9             | 28.5           | 30.7           | 8.6                  | 35.1          | 66.02              | 0.75          | 38.7       | 54.2                 | 13.0             | 3,385         | 15   | 33,091           |
| Chemgro          | 7045G2Z        | AA          | 110 | 27.0             | 27.2           | 34.7           | 8.8                  | 35.7          | 57.78              | 0.78          | 37.0       | 54.3                 | 11.5             | 3,448         | 10   | 32,541           |
| Augusta          | A1265          | DV          | 115 | 26.3             | 27.7           | 33.9           | 8.9                  | 36.9          | 62.16              | 0.79          | 35.4       | 56.5                 | 10.6             | 3,517         | 7    | 32,416           |
| Augusta          | A4465          | DV          | 115 | 28.4             | 28.7           | 30.6           | 8.6                  | 31.6          | 61.91              | 0.75          | 39.6       | 54.4                 | 12.1             | 3,259         | 27   | 32,398           |
| Mid-Atlantic     | MA6153PWE      | PC          | 115 | 25.7             | 27.0           | 32.3           | 9.3                  | 32.3          | 58.84              | 0.76          | 37.8       | 59.6                 | 10.5             | 3,568         | 4    | 32,051           |
| Seedway          | SW1162VT       | VT2P,B      | 111 | 25.8             | 25.9           | 33.8           | 8.6                  | 36.3          | 56.05              | 0.78          | 37.0       | 56.6                 | 11.8             | 3,530         | 5    | 31,873           |
| Seedway          | SW 0999SS      | STX         | 109 | 26.3             | 26.6           | 33.8           | 8.7                  | 33.2          | 56.96              | 0.75          | 38.9       | 56.3                 | 12.6             | 3,439         | 11   | 31,696           |
| Seed Consultants | SC1093AM       | AM          | 109 | 26.7             | 26.3           | 29.8           | 8.7                  | 30.9          | 66.01              | 0.74          | 39.9       | 58.9                 | 11.0             | 3,344         | 18   | 31,252           |
| Hubner           | H6390RCSS      | STX         | 108 | 25.2             | 26.1           | 33.8           | 8.6                  | 36.9          | 58.29              | 0.78          | 36.2       | 56.5                 | 11.5             | 3,499         | 9    | 30,857           |
| Revere           | 1307 TCRIB     | TRE         | 113 | 25.1             | 25.7           | 33.4           | 8.8                  | 35.9          | 62.29              | 0.78          | 36.7       | 56.7                 | 11.2             | 3,506         | 8    | 30,800           |
| Seed Consultants | SC1154AM       | AM          | 115 | 25.7             | 28.5           | 30.7           | 9.2                  | 29.2          | 66.87              | 0.75          | 40.7       | 62.8                 | 10.1             | 3,377         | 16   | 30,337           |
| Hubner           | H6456RCSS      | STX         | 109 | 25.9             | 26.9           | 30.3           | 8.9                  | 31.3          | 59.99              | 0.75          | 40.5       | 56.3                 | 12.3             | 3,339         | 19   | 30,268           |
| Augusta          | A6362          | DV          | 112 | 25.6             | 26.7           | 32.5           | 8.9                  | 30.7          | 57.47              | 0.75          | 40.2       | 56.0                 | 11.5             | 3,310         | 23   | 29,654           |
| Revere           | 1524 DV        | DV          | 115 | 25.5             | 26.8           | 33.7           | 8.6                  | 33.5          | 63.04              | 0.77          | 38.7       | 54.9                 | 12.4             | 3,317         | 22   | 29,602           |
| Chemgro          | 6929RSX        | STX         | 109 | 24.3             | 25.4           | 31.5           | 8.8                  | 31.9          | 60.06              | 0.74          | 40.0       | 56.0                 | 11.6             | 3,438         | 12   | 29,282           |
| Mid-Atlantic     | MA5168DV       | DV          | 116 | 24.5             | 26.8           | 29.8           | 9.0                  | 31.3          | 68.02              | 0.76          | 38.2       | 59.9                 | 9.4              | 3,334         | 20   | 28,628           |
| Chemgro          | 6749D4Z        | D           | 107 | 25.0             | 28.4           | 34.4           | 8.4                  | 30.9          | 59.23              | 0.74          | 41.1       | 55.4                 | 12.9             | 3,264         | 25   | 28,561           |
| Revere           | 0518 VT2PRIB   | VT2P        | 105 | 23.0             | 25.2           | 33.2           | 9.0                  | 35.0          | 59.71              | 0.78          | 36.9       | 57.4                 | 10.9             | 3,530         | 6    | 28,454           |
| Seedway          | SW 1188SS      | STX         | 111 | 25.1             | 24.6           | 31.5           | 9.3                  | 29.2          | 59.41              | 0.74          | 40.2       | 55.7                 | 11.4             | 3,230         | 30   | 28,373           |
| Pine Creek       | R6018DV        | DV          | 110 | 24.0             | 27.0           | 30.1           | 9.3                  | 29.7          | 65.20              | 0.75          | 40.1       | 55.5                 | 13.0             | 3,262         | 26   | 27,441           |
| Augusta          | A2064          | DV          | 114 | 23.3             | 25.8           | 31.1           | 8.7                  | 30.8          | 65.64              | 0.75          | 39.7       | 56.2                 | 11.2             | 3,259         | 28   | 26,579           |
| Hubner           | H0475P         | STXP        | 104 | 22.5             | 26.3           | 32.6           | 9.2                  | 29.7          | 64.91              | 0.73          | 41.5       | 55.8                 | 12.4             | 3,253         | 29   | 25,578           |

*Robin Kauffman*

Rob Kauffman  
rkmaits@aol.com, (717) 413-0763

|             |             |             |             |            |             |             |             |             |             |             |              |               |
|-------------|-------------|-------------|-------------|------------|-------------|-------------|-------------|-------------|-------------|-------------|--------------|---------------|
| Average =   | <b>33.3</b> | <b>26.8</b> | <b>32.2</b> | <b>8.7</b> | <b>32.5</b> | <b>62.0</b> | <b>0.80</b> | <b>39.1</b> | <b>56.6</b> | <b>11.7</b> | <b>3,351</b> | <b>31,465</b> |
| LSD(0.10) = | 2.3         |             |             |            |             |             |             |             |             |             |              |               |
| LSD(0.25) = | 1.2         |             |             |            |             |             |             |             |             |             |              |               |
| C.V. =      | 6.5         |             |             |            |             |             |             |             |             |             |              |               |

† See last page for Product/Brand, Technology and Type information. †† Milk/ton: calculated from Rock River data using Milk2006 Traditional 48 hour. \*Traditional Goering & Van Soest, Cornell University Method. **Bold** values significantly better than test average. **ns** = not significant

**TEST COMMENTS:** Soil moisture was very dry at planting, needing to plant 2" deep to reach any moisture in this conventional tillage. Emergence was a little erratic but eventually stands were good. Rainfall for most of the summer was adequate. Weed control was cleaned up with a post-application and the plot responded well with good growing conditions for the rest of the summer. Very little disease was present with just a few hybrids with northern lesions. The overall rating of the plot is 8 out of 10. (10=best)

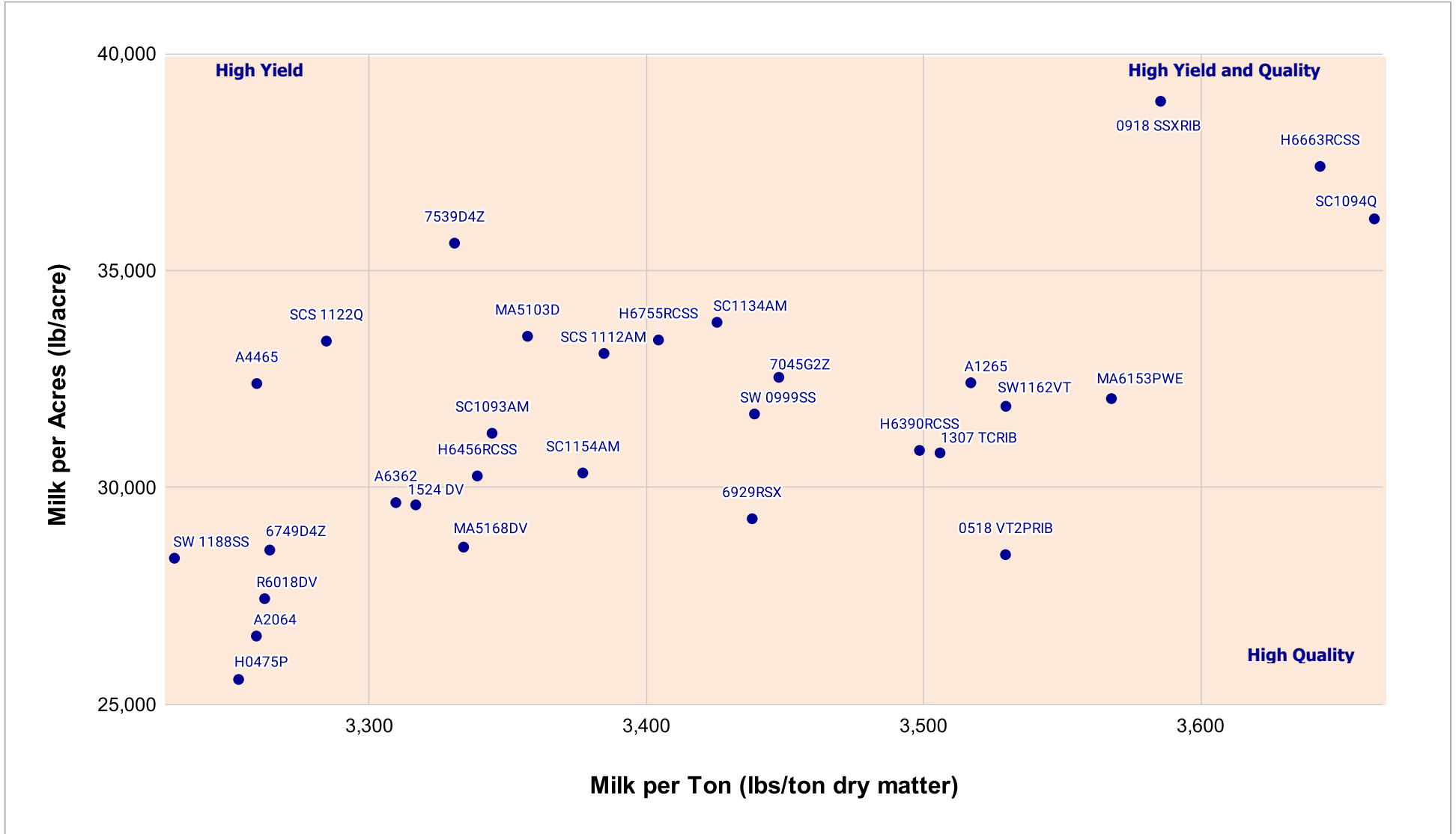
Visit us at [www.firstseedtests.com](http://www.firstseedtests.com)

Report Date: 10/7/2023

Revised:

©2023, all rights reserved by Elite Field Genetics, LLC

Yield vs Quality Graph

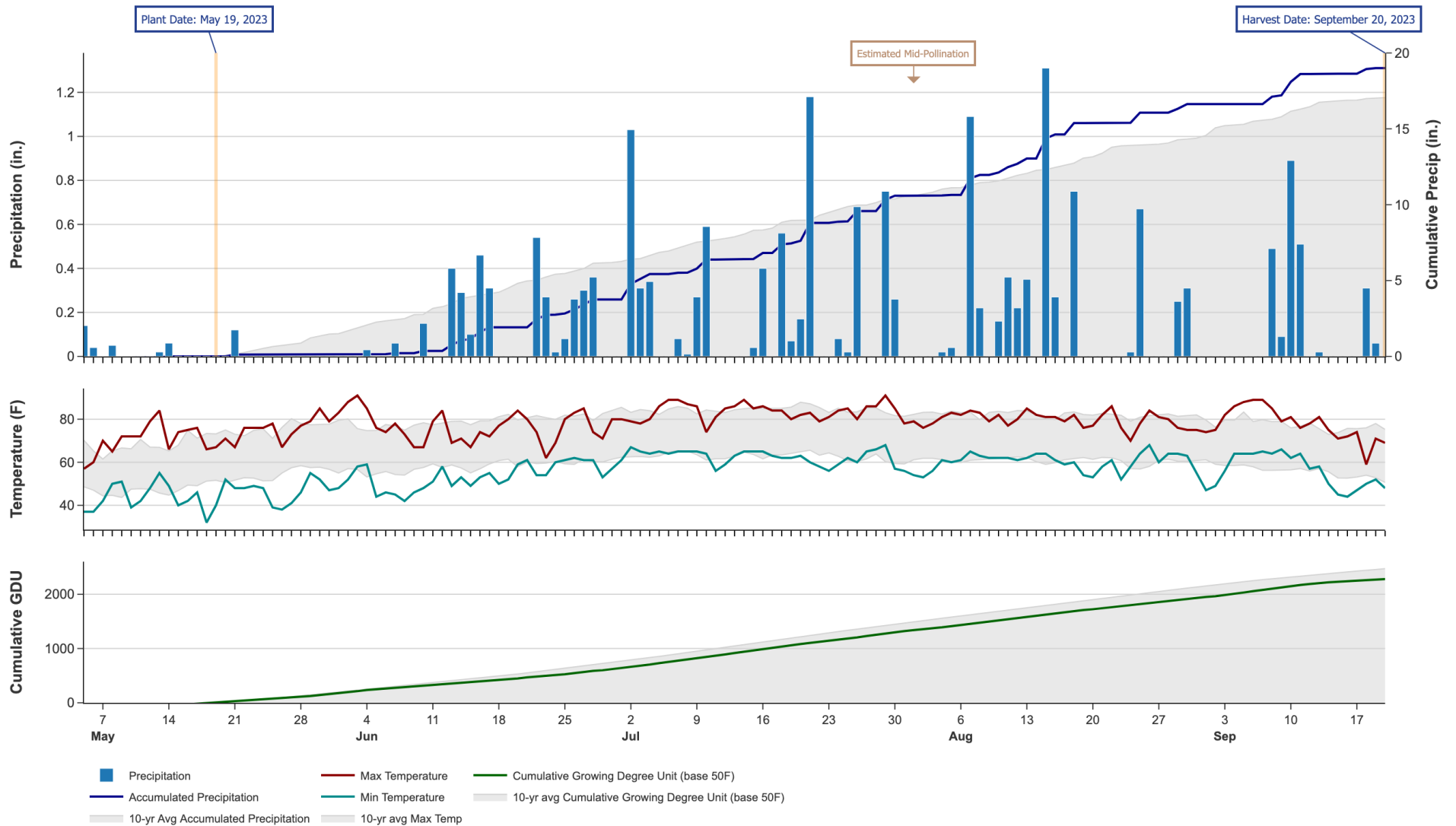


# 2023 Corn Silage - Pennsylvania Central [ PACE ]

## Weather Conditions Summary at MCVEYTOWN, PA

Weather Data Retrieved: 10/07/2023

| Monthly Total        | May*             | Jun              | Jul              | Aug              | Sep*             | Total              |
|----------------------|------------------|------------------|------------------|------------------|------------------|--------------------|
| Precip (in)   (Diff) | 0.4   4.2 (-3.8) | 3.6   4.7 (-1.1) | 6.8   4.4 (+2.5) | 6.0   3.8 (+2.2) | 2.4   2.7 (-0.3) | 19.3   19.8 (-0.5) |
| GDU   Avg (Diff)     | 296   320 (-24)  | 462   558 (-96)  | 704   729 (-25)  | 617   667 (-50)  | 341   334 (+6)   | 2420   2610 (-190) |



\* First monthly total starts on the date 14 days prior to planting and final monthly total ends on the harvest date.

Note: Weather information from PRISM Climate Group. Data may be revised by the provider after retrieval. FIRST will not revise or update reports to reflect any weather data changes. For information purposes only.

## 2023 Corn Silage - Pennsylvania Central [ PACE ]

### All-Season Test Products (36 Total)

| Company/Brand    | Product/Brand | Technology | RIB | RM  | Seed Treat. |
|------------------|---------------|------------|-----|-----|-------------|
| Augusta          | A1165         | VT2P       | N   | 115 | CM,C2       |
| Augusta          | A1265         | DV         | N   | 115 | CM,C2       |
| Augusta          | A1964         | 3110       | N   | 114 | CM,C2       |
| Augusta          | A2064         | DV         | Y   | 114 | AVC         |
| Augusta          | A4465         | DV         | N   | 115 | CM,C2       |
| Augusta          | A6362         | DV         | N   | 112 | CM,C2       |
| Chemgro          | 6749D4Z       | D          | Y   | 107 | CM,C5       |
| Chemgro          | 6929RSX       | STX        | Y   | 109 | AC,P5V      |
| Chemgro          | 7045G2Z       | AA         | Y   | 110 | CM,C5       |
| Chemgro          | 7539D4Z       | D          | Y   | 115 | CM,C2       |
| Hubner           | H0475P        | STXP       | Y   | 104 | AC,P5V,B360 |
| Hubner           | H0881D        | VT2P       | Y   | 108 | AC,P5,B360  |
| Hubner           | H6390RCSS     | STX        | Y   | 108 | AC,P5V,B360 |
| Hubner           | H6456RCSS     | STX        | Y   | 109 | AC,P5V,B360 |
| Hubner           | H6663RCSS     | STX        | Y   | 113 | AC,P5V      |
| Hubner           | H6755RCSS     | STX        | Y   | 114 | AC,P5V,B360 |
| Mid-Atlantic     | MA5103D       | D          | Y*  | 110 | CM,C2       |
| Mid-Atlantic     | MA5124 3110   | 3110       | Y*  | 112 | CM,C2       |
| Mid-Atlantic     | MA5144D       | D          | Y*  | 114 | CM,C2       |
| Mid-Atlantic     | MA5161DV      | DV         | Y*  | 116 | CM,C2       |
| Mid-Atlantic     | MA5168DV      | DV         | Y*  | 116 | CM,C2       |
| Mid-Atlantic     | MA6153PWE     | PC         | Y*  | 115 | CM,C2       |
| Pine Creek       | R6018DV       | DV         | Y   | 110 | Tr          |
| Revere           | 0518 VT2PRIB  | VT2P       | Y   | 105 | AC,P5       |
| Revere           | 0918 SSXRIB   | STX        | Y   | 109 | AC,P5       |
| Revere           | 1307 TCRIB    | TRE        | Y   | 113 | AC,P5       |
| Revere           | 1524 DV       | DV         | Y   | 115 | AC,P5       |
| Seed Consultants | SC1093AM      | AM         | Y   | 109 | Lum,L1      |
| Seed Consultants | SC1094Q       | QR         | Y   | 109 | Lum,L1      |
| Seed Consultants | SC1134AM      | AM         | Y   | 113 | Lum,L1      |
| Seed Consultants | SC1154AM      | AM         | Y   | 115 | Lum,L1      |
| Seed Consultants | SCS 1112AM    | AM         | Y   | 111 | Lum,L1      |
| Seed Consultants | SCS 1122Q     | QR         | Y   | 112 | Lum,L1      |
| Seedway          | SW 0999SS     | STX        | Y   | 109 | AC,P5       |
| Seedway          | SW1162VT      | VT2P,B     | Y   | 111 | AC,P5       |
| Seedway          | SW 1188SS     | STX        | Y   | 111 | AC,P5       |

\* FIRST does not inspect products for refuge blend. N\* indicates the product was entered without a refuge component by the sponsoring seed company. Prior year entries may contain refuge blend.

## Footnotes and Abbreviations Descriptions

### Brand Footnotes

---

GC Grower Comparison product included by FIRST when space permits.

### Corn Silage Technologies

---

|      |   |
|------|---|
| 3110 | Agrisure® Viptera® 3110 (Vip, CB,LL,GT)                                     |
| AA   | Agrisure® Above (CB,HX,LL,GT), formerly Agrisure® 3120                      |
| AM   | Optimum® AcreMax®   |
| D    | Duracade™ (CB,HX,RW,RW2,LL,GT), formerly Agrisure Duracade® 5122            |
| DV   | DuracadeViptera™ (Vip,CB,HX,RW,RW2,LL,GT), formerly Agrisure Duracade® 5222 |
| PC   | PowerCore®  |
| QR   | Qrome®  |
| STX  | SmartStax®  |
| STXP | SmartStax® Pro with RNAi Technology   |
| TRE  | Trecepta®   |
| VT2P | VT Double PRO®  |

---

### Corn Silage Seed Treatments\*

---

|             |   |
|-------------|---|
| NA          | Not Available                                       |
| AC,P5       | Accelaron® 500                                      |
| AC,P5,B360  | Accelaron® Poncho 500 with BioRise™ B-360 ST        |
| AC,P5V      | Accelaron® Poncho 500/Votivo                        |
| AC,P5V,B360 | Accelaron® Poncho 500/Votivo with BioRise™ B-360 ST |
| AVC         | Avicta® Complete Corn                               |
| CM,C2       | CruiserMaxx® 250                                    |
| CM,C5       | CruiserMaxx® 500                                    |
| Lum,L1      | LumiGEN™, Lumisure 1250                             |
| Tr          | Treated - unspecified treatment                     |

---

\* Seed treatments may include unspecified plant health promoting components.