

Test by: F.I.R.S.T. CCB, Inc. Elizabeth, IL

2023 Soybeans Top 30 Harvest Report

Iowa South [IASO] WASHINGTON, IA
Tom Vittetoe, Washington County, IA 52353

Early-Season Test	Maturity Group 2.5 - 3.0 S2023IASO53a
Top 30 of 36	For Gross Income (Sorted by Yield) Average of (3) Replications
PREV. CROP/HERB:	Corn / Anthem Maxx, 2-4-D, Roundup, Atrazine
SOIL DESCRIPTION:	Taintor silty clay loam, mod. poorly drained, non-irrigated
SOIL CONDITION:	very high P, high K, 6.2 pH, 4.3% OM, 21.8 CEC
TILLAGE/CULTIVATION:	No-Till
PEST MANAGEMENT:	Authority Edge, 2-4-D, Round Up, Ams, Outlook, Liberty, Downmark, Foliar Blend
Applied N-P-K (units):	0-0-0
SEEDED - RATE - ROW:	May 2 160.0 /A 15" spacing
HARVESTED - STAND:	Oct 3 150.8 /A

TEST COMMENTS:

Planting went very well and emergence was strong. At harvest, the plants stood 24 inches to 41 inches tall with very tight pod sets. Seed size was somewhat small but there were full pods. No weed pressure and some plants had green stems and some green foliage. Pods were dry and seeds were dry, The area just before harvest had dry hot days which dried things down quickly.

Company/Brand	Product/Brand	Technol.†	RM	SCN Resist.	Yield Bu/A ↓	Moisture %	Lodging %	Stand (x 1000)	Gross Income \$/Acre	Rank
Xitavo	XO 3014E ↗	E3,ST	3.0	R	88.3	8.8	1	152.0	1123	1
LG Seeds	LGS2505E3 GC ↗	E3	2.5	NA	86.5	8.8	1	152.0	1100	2
Kruger	K3003XF ↗	RXF	3.0	R	86.4	9.0	1	152.0	1099	3
Asgrow	AG30XF4 § ↗	RXF	3.0	R	85.3	9.1	1	152.0	1085	4
Apex	AE2940S ↗	E3,ST	2.9	R	84.9	9.1	1	152.0	1080	5
NuTech	27N03E ↗	E3	2.7	R	84.3	10.0	2	152.0	1072	6
Genesis	G2550E ↗	E3	2.5	R	83.7	9.0	1	152.0	1065	7
Titan Pro	TP 25E22 ↗	E3	2.5	R	83.4	8.8	1	152.0	1061	8
Asgrow	AG27XF3 § ↗	RXF	2.7	R	83.3	8.8	1	152.0	1060	9
Hoegemeyer	2724 E ↗	E3	2.7	R	82.4	9.2	1	152.0	1048	10
FS HiSOY	HS 25E30 ↗	E3	2.5	R	81.8	8.9	1	152.0	1040	11
Golden Harvest	GH2884XF § ↗	RXF	2.8	MR	81.7	8.8	1	152.0	1039	12
Mustang	29E224 GC ↗	E3	2.9	R	80.8	8.9	1	152.0	1028	13
Pioneer	P28A65E § ↗	E3	2.8	R	80.4	8.1	1	152.0	1023	14
NuTech	29N02E ↗	E3	2.9	R	80.3	8.5	1	149.3	1021	15
Brevant	B263EE § ↗	E3	2.6	R	79.6	8.8	1	149.3	1013	16
NuTech	27N06E ↗	E3	2.7	R	79.4	8.8	1	152.0	1010	17
Stine	28EG29 § ↗	E3	2.8	R	79.1	9.0	1	152.0	1006	18
Genesis	G2780E ↗	E3	2.7	R	79.0	9.1	1	149.3	1005	19
Pioneer	P25A16E § ↗	E3	2.5	R	78.8	8.4	1	146.7	1002	21
Kruger	K2816XF ↗	RXF	2.8	R	78.7	9.2	1	152.0	1001	22
FS HiSOY	HS 27E30 ↗	E3	2.7	R	78.5	9.3	1	149.3	999	23
Xitavo	XO 2832E ↗	E3	2.8	R	78.4	8.6	1	152.0	997	24
Kruger	K2604XF ↗	RXF	2.6	R	78.2	9.1	1	152.0	995	25
Genesis	G2960E ↗	E3	2.9	R	78.0	9.5	1	152.0	992	26
NuTech	29N04E ↗	E3	2.9	R	77.9	8.6	1	152.0	991	27
Golden Harvest	GH3043E3 ↗	E3	3.0	R	77.6	9.2	1	152.0	987	28
Xitavo	XO 2963E ↗	E3	2.9	R	77.5	9.4	1	141.3	986	29
FS HiSOY	HS 28F30 ↗	RXF	2.8	R	77.3	8.8	2	144.0	983	30
Brevant	B283EE § ↗	E3	2.8	R	77.1	9.0	1	152.0	981	31
PIONEER	P30A75E CK	E3	3.0	MR	79.0	8.6	1	152.0	1005	20
					Averages =	79.9	9.0	1	150.8	1017
					LSD (0.10) =	5.2	ns	ns		
					LSD (0.25) =	2.7	ns	ns		
					C.V. =	6.2				
									Historic yield: 71.24 bu/a, 13 yr(s)	



Randy Meinsma

randym@firstseedtests.com, (815) 238-8007

Yield & Income Factors:

Base Moisture = 13.0% Shrink = 1.3 Drying = \$0.04 Prices: GMO = \$12.72

Report Date: 10/04/2023

† See last page for abbreviation descriptions. Dark colored row identifies the check product found in early- and full-season tests. **Bold** yields are significantly above test average by LSD(0.10). **Italicized** brands exceed the grain moisture limit for this test. **ns** = column values not significantly different. ↗ Links to full product yield results at www.firstseedtests.com

©2023, All rights reserved to Farmers' Independent Research of Seed Technologies, LLC.

Additional reports available at www.firstseedtests.com

Test by: F.I.R.S.T. CCB, Inc. Elizabeth, IL

2023 Soybeans Top 30 Harvest Report

Iowa South [IASO] WASHINGTON, IA
Tom Vittetoe, Washington County, IA 52353

Full-Season Test	Maturity Group 3.1 - 3.6 S2023IASO53b
Top 30 of 36	For Gross Income (Sorted by Yield) Average of (3) Replications
PREV. CROP/HERB:	Corn / Anthem Maxx, 2-4-D, Roundup, Atrazine
SOIL DESCRIPTION:	Taintor silty clay loam, mod. poorly drained, non-irrigated
SOIL CONDITION:	very high P, high K, 6.2 pH, 4.3% OM, 21.8 CEC
TILLAGE/CULTIVATION:	No-Till
PEST MANAGEMENT:	Authority Edge, 2-4-D, Round Up, Ams, Outlook, Liberty, Downmark, Foliar Blend
Applied N-P-K (units):	0-0-0
SEEDED - RATE - ROW:	May 2 160.0 /A 15" spacing
HARVESTED - STAND:	Oct 3 150.8 /A

TEST COMMENTS:

Planting went very well and emergence was strong. At harvest, the plants stood 24 inches to 41 inches tall with very tight pod sets. Seed size was somewhat small but there were full pods. No weed pressure and some plants had green stems and some green foliage. Pods were dry and seeds were dry, The area just before harvest had dry hot days which dried things down quickly.

Company/Brand	Product/Brand	Technol.†	RM	SCN Resist.	Yield Bu/A ↓	Moisture %	Lodging %	Stand (x 1000)	Gross Income \$/Acre	Rank
Asgrow	AG33XF3 § ↗	RXF	3.3	R	88.0	8.2	1	152.0	1119	1
Asgrow	AG35XF1 § ↗	RXF	3.5	R	86.5	9.4	1	152.0	1100	2
Renk	RS353NXF ↗	RXF	3.5	R	85.5	8.7	1	141.3	1088	3
FS HiSOY	HS 35F20 ↗	RXF	3.5	R	85.5	8.6	3	148.0	1088	4
Stine	35EG29 § ↗	E3	3.5	R	85.1	8.3	1	152.0	1082	5
Stine	36PD92 § ↗	RXF	3.6	R	84.8	9.2	1	152.0	1079	6
NuTech	36N04E ↗	E3	3.6	R	84.8	9.4	2	152.0	1079	7
Hoegemeyer	3134 E ↗	E3	3.1	R	83.4	8.3	1	152.0	1061	8
ProHarvest	32F26 ↗	RXF	3.2	R	82.3	8.8	1	152.0	1047	10
Kruger	K3214XF ↗	RXF	3.2	R	82.2	8.8	2	152.0	1046	11
Golden Harvest	GH3373E3S § ↗	E3,ST	3.3	R	82.1	9.1	1	152.0	1044	12
NK Brand	NK36-H9E3S ↗	E3,ST	3.6	R	81.9	8.8	2	152.0	1042	13
NuTech	34N02E ↗	E3	3.4	R	81.8	9.3	1	152.0	1040	14
Xitavo	XO 3131E ↗	E3	3.1	R	81.8	8.7	1	152.0	1040	15
FS HiSOY	HS 31E20 ↗	E3,ST	3.1	R	81.2	8.5	3	148.0	1033	16
Hoegemeyer	3544 E ↗	E3	3.5	R	80.9	8.9	1	152.0	1029	17
Kruger	K3305XF ↗	RXF	3.3	R	80.9	8.7	1	152.0	1029	18
Xitavo	XO 3651E ↗	E3	3.6	R	80.8	9.5	1	152.0	1028	19
Xitavo	XO 3483E ↗	E3	3.4	MR	80.8	9.1	1	149.3	1028	20
Kruger	K3593XF ↗	RXF	3.5	R	80.1	8.8	1	152.0	1019	21
Stine	33FD32 § ↗	RXF	3.5	R	79.9	8.7	1	146.7	1016	22
Xitavo	XO 3224E ↗	E3	3.2	R	79.7	8.3	1	152.0	1014	23
NuTech	31N07E ↗	E3	3.1	R	79.6	8.4	1	152.0	1013	24
Apex	AE3340 ↗	E3	3.3	R	79.2	8.3	1	152.0	1007	25
Apex	AE3131S ↗	E3,ST	3.1	R	79.0	8.7	1	152.0	1005	26
FS HiSOY	HS 34F30 ↗	RXF	3.4	R	78.9	9.1	1	146.7	1004	27
Genesis	G3460E ↗	E3	3.4	R	78.7	8.6	2	149.3	1001	28
FS HiSOY	HS 32E30 ↗	E3	3.2	R	77.9	9.4	2	146.7	991	29
P3 Genetics	2331E ↗	E3	3.1	R	77.7	8.1	1	152.0	988	30
NuTech	33N04E ↗	E3	3.3	R	77.5	8.9	1	146.7	986	31
PIONEER	P30A75E CK	E3	3.0	MR	82.3	8.6	1	152.0	1047	9
					Averages =	80.6	8.8	1	150.8	1027
					LSD (0.10) =	4.7	ns	ns		
					LSD (0.25) =	2.4	ns	ns		
					C.V. =	5.5				
Randy Meinsma					Historic yield: 71.24 bu/a, 13 yr(s)					
randym@firstseedtests.com, (815) 238-8007										

Yield & Income Factors: Base Moisture = 13.0% Shrink = 1.3 Drying = \$0.04 Prices: GMO = \$12.72

Report Date: 10/04/2023

† See last page for abbreviation descriptions. Dark colored row identifies the check product found in early- and full-season tests. **Bold** yields are significantly above test average by LSD(0.10). **Italicized** brands exceed the grain moisture limit for this test. **ns** = column values not significantly different. ↗ Links to full product yield results at www.firstseedtests.com

©2023, All rights reserved to Farmers' Independent Research of Seed Technologies, LLC.

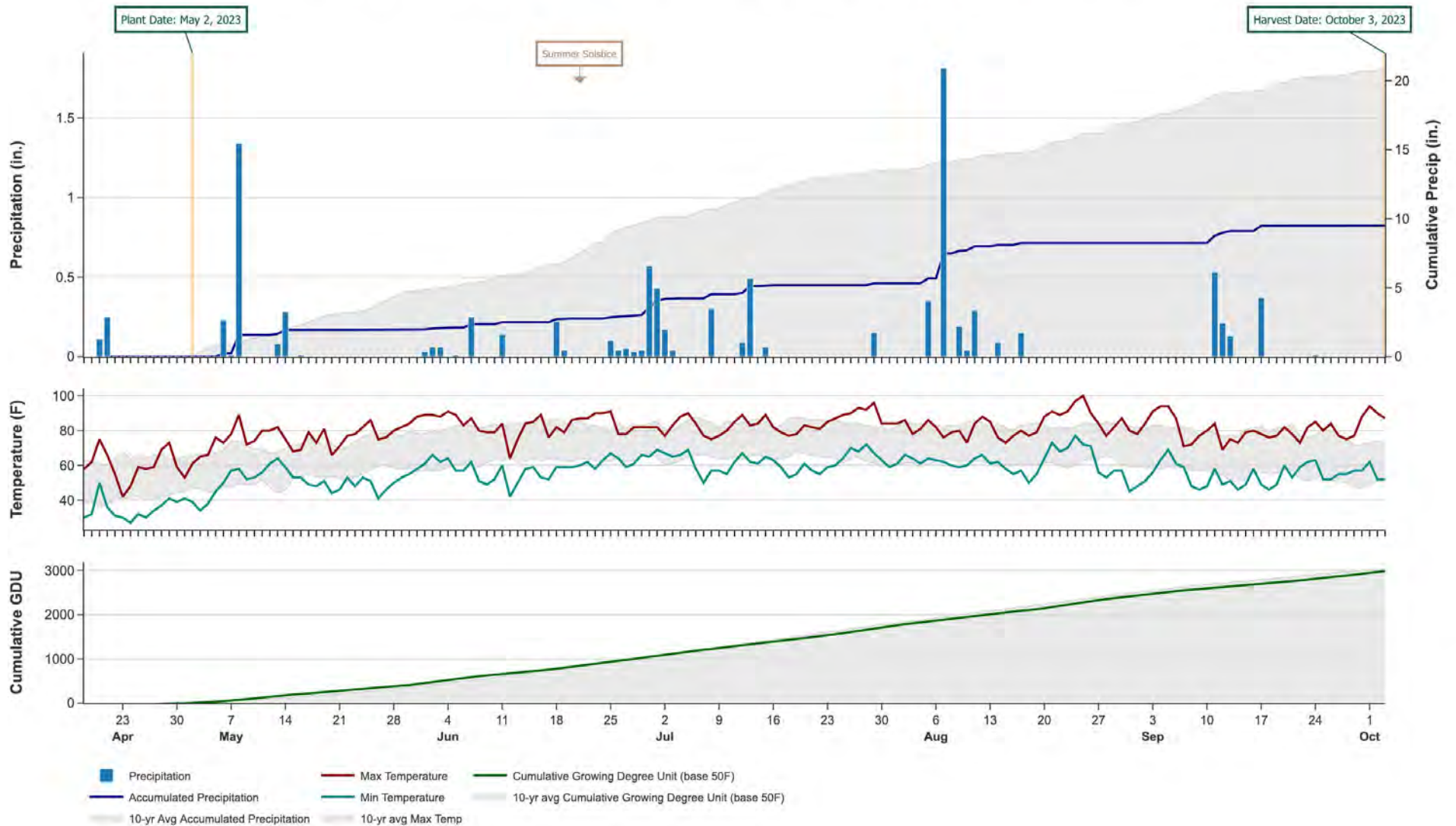
Additional reports available at www.firstseedtests.com

2023 Soybeans - Iowa South [IASO]

Weather Conditions Summary at WASHINGTON, IA

Weather Data Retrieved: 10/04/2023

Monthly Total	Apr*	May	Jun	Jul	Aug	Sep	Oct*	Total
Precip (in) (Diff)	0.4 1.7 (-1.4)	1.9 5.2 (-3.2)	1.6 5.1 (-3.5)	1.7 3.7 (-2.0)	2.9 3.4 (-0.5)	1.2 3.8 (-2.5)	0.0 0.2 (-0.2)	9.9 23.0 (-13.2)
GDU Avg (Diff)	42 80 (-38)	436 389 (+46)	618 675 (-57)	688 746 (-58)	674 692 (-18)	514 512 (+1)	62 35 (+26)	3034 3132 (-98)



* First monthly total starts on the date 14 days prior to planting and final monthly total ends on the harvest date.

Note: Weather information from PRISM Climate Group. Data may be revised by the provider after retrieval. FIRST will not revise or update reports to reflect any weather data changes. For information purposes only.

2023 Soybeans - Iowa South [IASO]

Early-Season Test Products (36 Total)

Company/Brand	Product/Brand	Technology	SCN	RM	Seed Treat.
Apex	AE2940S	E3,ST	R	2.9	PU
Asgrow	AG27XF3	RXF	R	2.7	ACi,IL
Asgrow	AG30XF4	RXF	R	3.0	ACi,IL
Brevant	B263EE	E3	R	2.6	Lum,Lu,Lud,IL
Brevant	B283EE	E3	R	2.8	Lum,Lu,Lud,IL
FS HiSOY	HS 25E30	E3	R	2.5	ACi,SA
FS HiSOY	HS 26E20	E3	R	2.6	ACi,SA
FS HiSOY	HS 27E30	E3	R	2.7	ACi,SA
FS HiSOY	HS 28F30	RXF	R	2.8	ACi,SA
Genesis	G2550E	E3	R	2.5	EcQ,NF,NH,SA
Genesis	G2780E	E3	R	2.7	EcQ,NF,NH,SA
Genesis	G2960E	E3	R	2.9	EcQ,NF,NH,SA
Golden Harvest	GH2884XF	RXF	MR	2.8	CMB-APX,SA
Golden Harvest	GH3043E3	E3	R	3.0	CMB-APX,SA
Hoegemeyer	2724 E	E3	R	2.7	Lum,Lu,IL
Hoegemeyer	2834 E	E3	R	2.8	Lum,Lu,IL
Kruger	K2604XF	RXF	R	2.6	ACi,IL
Kruger	K2816XF	RXF	R	2.8	ACi,IL
Kruger	K3003XF	RXF	R	3.0	ACi,IL
LG Seeds	LGS2505E3	E3	NA	2.5	ASfi,SA
Mustang	29E224	E3	R	2.9	Treated
NK Brand	NK29-Z4E3	E3	R	2.9	CMB-APX,SA
NK Brand	NK30-B2E3	E3	R	3.0	CMB-APX,SA
NuTech	27N03E	E3	R	2.7	Lum,Lu,IL
NuTech	27N06E	E3	R	2.7	Lum,Lu,IL
NuTech	29N02E	E3	R	2.9	Lum,Lu,IL
NuTech	29N04E	E3	R	2.9	Lum,Lu,IL
Pioneer	P25A16E	E3	R	2.5	NA
Pioneer	P28A65E	E3	R	2.8	NA
Pioneer	P30A75E	E3	MR	3.0	Lum, LumT, IL
Stine	28EG29	E3	R	2.8	ACi
Titan Pro	TP 25E22	E3	R	2.5	SA,A,R,TU
Xitavo	XO 2613E	E3	R	2.6	PV,IL,OB,Rey
Xitavo	XO 2832E	E3	R	2.8	PV,IL,OB,Rey
Xitavo	XO 2963E	E3	R	2.9	PV,IL,OB,Rey
Xitavo	XO 3014E	E3,ST	R	3.0	PV,IL,OB,Rey

2023 Soybeans - Iowa South [IASO]

Full-Season Test Products (36 Total)

Company/Brand	Product/Brand	Technology	SCN	RM	Seed Treat.
Apex	AE3131S	E3,ST	R	3.1	PU
Apex	AE3340	E3	R	3.3	PU
Apex	AE3541	E3	R	3.5	PU
Asgrow	AG33XF3	RXF	R	3.3	ACi,IL
Asgrow	AG35XF1	RXF	R	3.5	ACi,IL
FS HiSOY	HS 31E20	E3,ST	R	3.1	ACi,SA
FS HiSOY	HS 32E30	E3	R	3.2	ACi,SA
FS HiSOY	HS 34F30	RXF	R	3.4	ACi,SA
FS HiSOY	HS 35F20	RXF	R	3.5	ACi,SA
Genesis	G3171ES	E3,ST	R	3.1	EcQ,NF,NH,SA
Genesis	G3460E	E3	R	3.4	EcQ,NF,NH,SA
Golden Harvest	GH3373E3S	E3,ST	R	3.3	CMB-APX,SA
Golden Harvest	GH3693E3S	E3,ST	R	3.6	CMB-APX,SA
Hoegemeyer	3134 E	E3	R	3.1	Lum,Lu,IL
Hoegemeyer	3544 E	E3	R	3.5	Lum, LumT, IL
Kruger	K3214XF	RXF	R	3.2	ACi,IL
Kruger	K3305XF	RXF	R	3.3	ACi,IL
Kruger	K3593XF	RXF	R	3.5	ACi,IL
NK Brand	NK36-H9E3S	E3,ST	R	3.6	CMB-APX,SA
NK Brand	S35-E3	E3	R	3.5	CMB-APX,SA
NuTech	31N07E	E3	R	3.1	Lum,Lu,IL
NuTech	33N04E	E3	R	3.3	Lum,Lu,IL
NuTech	34N02E	E3	R	3.4	Lum,Lu,IL
NuTech	36N04E	E3	R	3.6	Lum,Lu,Lud,IL
P3 Genetics	2331E	E3	R	3.1	PG+
P3 Genetics	2433E	E3	R	3.4	PG+
Pioneer	P30A75E	E3	MR	3.0	Lum, LumT, IL
ProHarvest	32F26	RXF	R	3.2	PU
Renk	RS353NXF	RXF	R	3.5	Treated
Stine	33FD32	RXF	R	3.5	ACi
Stine	35EG29	E3	R	3.5	ACi
Stine	36PD92	RXF	R	3.6	ACi
Xitavo	XO 3131E	E3	R	3.1	PV,IL,OB,Rey
Xitavo	XO 3224E	E3	R	3.2	PV,IL,OB,Rey
Xitavo	XO 3483E	E3	MR	3.4	PV,IL,OB,Rey
Xitavo	XO 3651E	E3	R	3.6	PV,IL,OB,Rey

Footnotes and Abbreviations Descriptions

Brand Footnotes

CK	Identifies a check product included in early- and full-season tests.
GC	Grower Comparison product included by FIRST when space permits.
§	United Soybean Board sponsored entry

Soybean Cyst Nematode (SCN) Resistance Rating

S	susceptible
MR	moderate resistance
R	resistant
n/a	info unavailable

Soybeans Technologies

E3	Enlist E3®
RXF	XtendFlex®
ST	Sulfonylurea tolerant

Soybeans Seed Treatments*

NA	Not Available
ACi	Acceleron® Standard Insecticide-Fungicide
ACi,IL	Acceleron® Standard Insecticide-Fungicide, ILeVO
ACi,SA	Acceleron® Standard Insecticide-Fungicide, Saltro®
ASfi,SA	AgriShield Max with Saltro®
CMB-APX,SA	CruiserMaxx® APX with Saltro®
EcQ,NF,NH,SA	Eclipse US Total Quad-R, N-Force, N-Hibit, Saltro
Lum,Lu,IL	LumiGEN™, Lumisena™, ILeVO
Lum,Lu,Lud,IL	LumiGEN™, Luminesa, Lumiderm, ILeVO
Lum, LumT, IL	LumiGEN™, LumiTreo, ILEVO
PG+	Profit Guard +
PU	Protect Ultra
PV,IL,OB,Rey	Poncho®/Votivo®, ILeVO, Obvius Plus, Relenya®
SA,A,R,TU	Saltro, AllegianceFL, Redigo480, TriUp
Treated	Treated, unspecified

* Seed treatments may include unspecified plant health promoting components.