

Test by: F.I.R.S.T. AMC Inc. Mount Carroll, IL

## 2023 Corn Grain Top 30 Harvest Report

Illinois East Central [ILEC] WATSEKA, IL  
Linden Wessels, Iroquois County, IL 60970

<b>Early-Season Test</b>	105 - 111 Day CRM B2023ILEC22a
<b>Top 30 of 45</b>	For Gross Income (Sorted by Yield) Average of (3) Replications
<b>PREV. CROP/HERB:</b>	Soybeans / Liberty, Roundup Powermax, 2,4-D
<b>SOIL DESCRIPTION:</b>	Selma, Ridgeville sandy loam, mod. well drained, non-irrigated
<b>SOIL CONDITION:</b>	Conventional W/ Fall Till, high P, low K, 5.1 pH, 2.9% OM, 20.7 CEC
<b>PEST MANAGEMENT:</b>	Resicore, Roundup Powermax, Callisto, Force 3g, Miravis Neo
<b>FERTILITY - Applied N:</b>	202 Spring
<b>Applied N-P-K (units):</b>	202-0-0
<b>SEEDED - RATE - ROW:</b>	Apr 25 37.5 /A 30" spacing
<b>HARVESTED - STAND:</b>	Oct 4 35.5 /A

### TEST COMMENTS:

*This plot was planted in Ideal soil conditions with good moisture. There was uniform and even emergence early on. The weather turned extremely dry in June allowing the plants to root down and stand beautifully with excellent stalk quality. A 4" rain in July came at the perfect time during pollination, then it turned very dry until August 5th when the plot received 4.57" of rain to help finish out the crop. There was little disease, and cooler nighttime temperatures kept the plot from stress and helped produce some nice yields considering the below-average rainfall.*

Company/Brand	Product/Brand	Technol.†	RM	Yield Bu/A ↓	Moisture %	Lodging %	Stand (x 1000)	Gross Income \$/Acre	Rank
Renk	RK773TRE ↗	TRE	109	<b>308.8</b>	17.2	1	33.9	1393	1
Sun Prairie	SP2562 ↗	TRE	109	<b>298.0</b>	16.8	1	36.6	1349	2
Wyffels	W6215 ↗	TRE	109	<b>293.2</b>	18.2	1	36.6	1312	4
Renk	RK811PWE ↗	PCE	111	<b>293.0</b>	20.1	1	36.6	1288	6
DeKalb	DKC110-10RIB GC ↗	STX	110	<b>293.0</b>	19.1	1	36.6	1300	5
Wyffels	W6886 ↗	VT2P	111	<b>293.0</b>	21.6	1	34.8	1270	7
Purple Ribbon	24A09 ↗	VT2P	109	<b>289.5</b>	16.0	1	37.5	1320	3
Wyffels	W7048 ↗	STX	111	<b>287.7</b>	21.7	1	35.7	1246	11
AgVenture	AV2411AM ↗	AM	111	<b>284.2</b>	19.5	1	35.7	1257	9
Wyffels	W5778RIB ↗	STX	109	<b>281.7</b>	18.6	1	36.6	1255	10
NK Brand	NK1040-AA ↗	AA	110	<b>277.8</b>	20.9	1	35.7	1212	16
NK Brand	NK1188-AA ↗	AA	111	<b>277.4</b>	21.1	1	35.7	1208	18
Renk	RK766SSPRO ↗	STXP	109	<b>276.9</b>	16.4	1	36.6	1258	8
LG Seeds	LG58C48VT2PRIB ↗	VT2P	108	273.0	18.1	1	32.2	1222	13
LG Seeds	LG61C34STXRIB ↗	STXP	111	272.7	19.1	1	35.7	1209	17
DeKalb	DKC59-82RIB GC ↗	VT2P	109	272.6	17.3	1	35.7	1229	12
AgVenture	AV6010AM ↗	AM	110	271.4	19.8	1	36.6	1196	20
Dyna-Gro	D50VC09RIB ↗	VT2P	110	271.1	17.3	1	36.6	1222	14
Purple Ribbon	23A08 ↗	VT2P	108	271.0	17.5	1	36.6	1220	15
NuTech	70B4AM ↗	AM	110	269.3	19.5	1	34.8	1190	22
FS InVision	FS 5935X RIB ↗	STX	109	268.0	20.7	1	35.7	1172	26
NuTech	68A9AM ↗	AM	108	267.2	17.4	1	35.7	1203	19
Purple Ribbon	23A10 ↗	VT2P	110	262.9	20.0	1	36.6	1156	28
Golden Harvest	G10B61-AA ↗	AA	110	262.4	20.5	1	37.5	1150	30
NuTech	66D1AM ↗	AM	106	261.4	16.2	1	36.6	1190	23
Integra	CXINT108VT ↗	VT2P	108	261.4	16.5	1	37.5	1187	24
FS InVision	FS 6017V RIB ↗	VT2P	110	260.1	15.0	1	33.9	1196	21
NuTech	70F6Q ↗	QR	110	260.0	17.5	1	36.6	1170	27
Burrus	POWER PLUS 5L44AM ↗	AM	110	260.0	19.1	1	33.0	1154	29
Integra	5802 VT2PRIB ↗	VT2P	108	258.0	15.1	1	36.6	1186	25
<b>PIONEER</b>	<b>P1108Q CK</b>	<b>QR</b>	<b>111</b>	<b>234.4</b>	<b>22.2</b>	<b>1</b>	<b>33.1</b>	<b>1011</b>	<b>43</b>
				<b>Averages =</b>	<b>264.7</b>	<b>18.8</b>	<b>1</b>	<b>35.5</b>	<b>1178</b>
				<b>LSD (0.10) =</b>	11.1	1.4	ns		
				<b>LSD (0.25) =</b>	5.8	0.7	ns		
				<b>C.V. =</b>	4.0				
				Historic yield: 219.54 bu/a, 23 yr(s)					

**Yield & Income Factors:** Base Moisture = 15.0% Shrink = 1.3 Drying = \$0.04 Prices: GMO = \$4.60

Report Date: 10/05/2023

† See last page for abbreviation descriptions. Dark colored row identifies the check product found in early- and full-season tests. **Bold** yields are significantly above test average by LSD(0.10). **Italicized** brands exceed the grain moisture limit for this test. **ns** = column values not significantly different. ↗ Links to full product yield results at [www.firstseedtests.com](http://www.firstseedtests.com)

©2023, All rights reserved to Farmers' Independent Research of Seed Technologies, LLC.

Additional reports available at [www.firstseedtests.com](http://www.firstseedtests.com)

Test by: F.I.R.S.T. AMC Inc. Mount Carroll, IL

## 2023 Corn Grain Top 30 Harvest Report

Illinois East Central [ILEC] WATSEKA, IL  
Linden Wessels, Iroquois County, IL 60970

<b>Full-Season Test</b>	112 - 116 Day CRM B2023ILEC22b
<b>Top 30 of 54</b>	For Gross Income (Sorted by Yield) Average of (3) Replications
<b>PREV. CROP/HERB:</b>	Soybeans / Liberty, Roundup Powermax, 2,4-D
<b>SOIL DESCRIPTION:</b>	Selma, Ridgeville sandy loam, mod. well drained, non-irrigated
<b>SOIL CONDITION:</b>	Conventional W/ Fall Till, high P, low K, 5.1 pH, 2.9% OM, 20.7 CEC
<b>PEST MANAGEMENT:</b>	Resicore, Roundup Powermax, Callisto, Force 3g, Miravis Neo
<b>FERTILITY - Applied N:</b>	202 Spring
<b>Applied N-P-K (units):</b>	202-0-0
<b>SEEDED - RATE - ROW:</b>	Apr 25 37.5 /A 30" spacing
<b>HARVESTED - STAND:</b>	Oct 4 34.4 /A

### TEST COMMENTS:

*This plot was planted in ideal soil conditions with good moisture. There was uniform and even emergence early on. The weather turned extremely dry in June allowing the plants to root down and stand beautifully with excellent stalk quality. A 4" rain in July came at the perfect time during pollination, then it turned very dry until August 5th when the plot received 4.57" of rain to help finish out the crop. There was little disease, and cooler nighttime temperatures kept the plot from stress and helped produce some nice yields considering the below-average rainfall.*

Company/Brand	Product/Brand	Technol.†	RM	Yield Bu/A ↓	Moisture %	Lodging %	Stand (x 1000)	Gross Income \$/Acre	Rank
Wyffels	W8086 ↗	VT2P	114	<b>296.3</b>	22.0	1	34.0	1280	1
LG Seeds	LG66C06VT2RIB ↗	VT2P	116	<b>292.5</b>	25.7	1	36.6	1220	13
LG Seeds	LG63C82VTDG ↗	VT2PDG	113	<b>290.9</b>	20.2	1	34.8	1278	2
Wyffels	W7945RIB ↗	TRE	114	<b>290.6</b>	22.1	1	34.8	1254	3
Sun Prairie	SP2789 ↗	VT2P	113	<b>289.2</b>	23.1	1	34.0	1237	5
ProHarvest	84P78 TRERIB ↗	TRE	114	<b>287.3</b>	24.7	1	33.9	1210	16
Burrus	7F33 VT2P ↗	VT2P	114	<b>286.5</b>	22.2	1	34.8	1235	6
Integra	6493 VT2PRIB ↗	VT2P	114	<b>285.4</b>	22.4	1	33.1	1229	7
DeKalb	DKC65-95RIB GC ↗	VT2P	115	<b>284.2</b>	22.3	1	34.8	1224	10
NK Brand	NK1480-DV ↗	DV	114	<b>283.1</b>	20.6	1	35.7	1239	4
AgVenture	AV3213AM ↗	AM	113	<b>282.9</b>	21.8	1	32.1	1224	11
NuTech	75C1AM ↗	AM	115	<b>281.1</b>	20.7	1	33.1	1229	8
DeKalb	DKC66-18RIB GC ↗	VT2P	116	<b>279.6</b>	21.4	1	35.7	1214	14
Wyffels	W7759 ↗	STXP	113	279.0	19.9	1	35.7	1228	9
FS InVision	FS 6595V RIB ↗	VT2P	115	276.3	23.4	1	36.6	1178	26
Sun Prairie	SP2788 ↗	VT2P	113	276.3	19.4	1	35.7	1222	12
Great Heart	HT-7499TRE ↗	TRE	114	275.9	23.2	1	35.7	1179	25
Wyffels	W7876RIB ↗	VT2P	114	275.8	21.7	1	35.7	1194	19
ProHarvest	8360 VT2PRIB ↗	VT2P	113	275.1	22.0	1	35.7	1189	21
Purple Ribbon	23A12 ↗	VT2PDG	112	275.1	19.8	1	32.2	1213	15
ProHarvest	83P66 VT2P ↗	VT2P	113	275.1	22.3	1	34.8	1185	23
FS InVision	FS 6627T RIB ↗	TRE	116	274.5	20.9	1	36.6	1198	18
Integra	6274 VT2PRIB ↗	VT2P	112	273.5	20.3	1	36.6	1200	17
AgVenture	AV7913AM ↗	AM	113	269.3	19.3	1	34.8	1193	20
Stone	1504TRE ↗	TRE	115	268.9	20.8	1	34.8	1174	27
DeKalb	DKC64-64RIB GC ↗	STX	114	268.4	21.9	1	35.7	1161	28
Integra	6244 PWE ↗	PCE	112	268.0	19.2	1	33.9	1187	22
Pioneer	P1278Q GC ↗	QR	112	267.8	19.8	1	34.8	1181	24
NK Brand	NK1333-AA ↗	AA	113	266.6	21.7	1	35.7	1155	30
Golden Harvest	G14B32-DV ↗	DV	114	265.1	21.0	1	32.2	1156	29
<b>PIONEER</b>	<b>P1108Q CK</b>	<b>QR</b>	<b>111</b>	<b>246.8</b>	<b>20.7</b>	<b>1</b>	<b>35.7</b>	<b>1079</b>	<b>48</b>
				<b>Averages =</b>	<b>268.7</b>	<b>21.8</b>	<b>1</b>	<b>34.4</b>	<b>1163</b>
				LSD (0.10) =	10.5	1.4	ns		
				LSD (0.25) =	5.5	0.7	ns		
				C.V. =	3.7				
				Historic yield: 219.54 bu/a, 23 yr(s)					

Nathan Roux

nathan.g.roux@gmail.com, (815) 716-3794

### Yield & Income Factors:

Base Moisture = 15.0%

Shrink = 1.3

Drying = \$0.04

Prices: GMO = \$4.60

Report Date: 10/05/2023

† See last page for abbreviation descriptions. Dark colored row identifies the check product found in early- and full-season tests. **Bold** yields are significantly above test average by LSD(0.10). **Italicized** brands exceed the grain moisture limit for this test. **ns** = column values not significantly different. ↗ Links to full product yield results at www.firstseedtests.com

©2023, All rights reserved to Farmers' Independent Research of Seed Technologies, LLC.

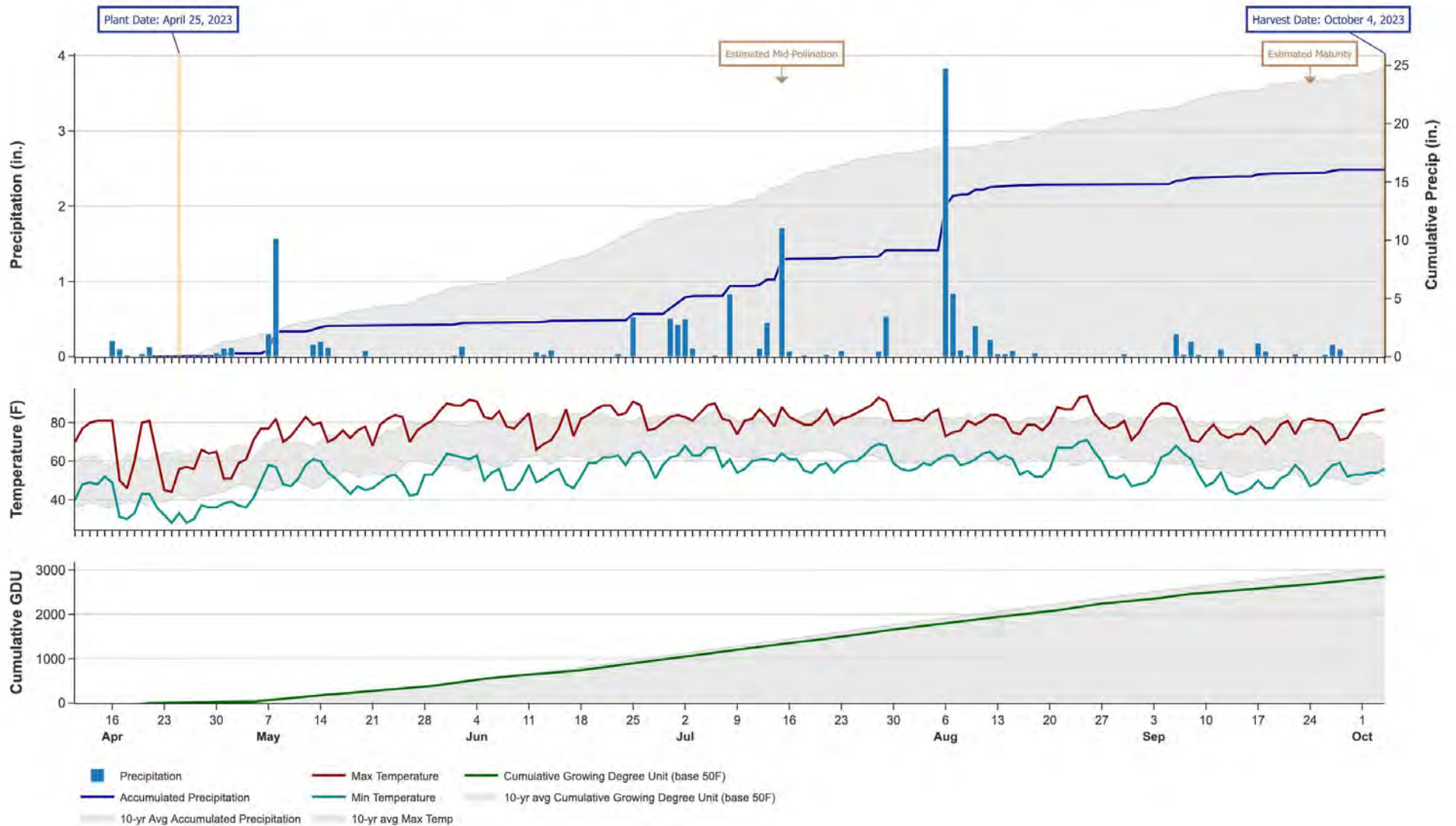
Additional reports available at [www.firstseedtests.com](http://www.firstseedtests.com)

# 2023 Corn - Illinois East Central [ ILEC ]

## Weather Conditions Summary at WATSEKA, IL

Weather Data Retrieved: 10/05/2023

Monthly Total	Apr*	May	Jun	Jul	Aug	Sep	Oct*	Total
Precip (in)   (Diff)	0.6   2.6 (-2.1)	2.7   4.9 (-2.2)	1.4   6.3 (-4.9)	5.0   5.4 (-0.4)	5.7   3.6 (+2.0)	1.2   3.2 (-1.9)	0.0   0.5 (-0.5)	16.6   26.5 (-9.9)
GDU   Avg (Diff)	139   80 (+58)	410   398 (+11)	571   648 (-77)	675   711 (-36)	622   667 (-45)	472   516 (-44)	79   50 (+28)	2968   3072 (-104)



\* First monthly total starts on the date 14 days prior to planting and final monthly total ends on the harvest date.

Note: Weather information from PRISM Climate Group. Data may be revised by the provider after retrieval. FIRST will not revise or update reports to reflect any weather data changes. For information purposes only.

## 2023 Corn - Illinois East Central [ ILEC ]

### Early-Season Test Products (45 Total)

Company/Brand	Product/Brand	Technology	RIB	RM	Seed Treat.
AgVenture	AV2208AM	AM	Y	108	Lum, L1
AgVenture	AV2411AM	AM	Y	111	Lum, L1
AgVenture	AV6010AM	AM	Y	110	Treated
AgVenture	AV9610AM	AM	Y	110	Lum, L1
Augusta	A1958-DV	DV	N	108	CM,C2
Burrus	POWER PLUS 5J21AM	AM	Y	110	Lum, L1
Burrus	POWER PLUS 5L44AM	AM	Y	110	BPS
DeKalb	DKC110-10RIB	STX	Y	110	AC,P5V,EDC-EL
DeKalb	DKC59-82RIB	VT2P	Y	109	AC,P5V,EDC-EL
Dyna-Gro	D50VC09RIB	VT2P	Y*	110	AC,P5V
FS InVision	FS 5935X RIB	STX	Y	109	AC,P5V,EDC-EL
FS InVision	FS 6017V RIB	VT2P	Y	110	AC,P5V,EDC-EL
FS InVision	FS 6025X RIB	STX	Y	110	AC,P5V,EDC-EL
FS InVision	FS 6133VDG RIB	VT2PDG	Y	111	AC,P5V,EDC-EL
Golden Harvest	G10B61-AA	AA	Y	110	CM,C5,Va
Golden Harvest	G11V76-AA	AA	Y	111	CM,C5,Va
Great Heart	HT-7044VT2P	VT2P	Y	110	P5V
Integra	5802 VT2PRIB	VT2P	Y	108	AC,P5V,SU+Zn
Integra	6061 STXRIB	STX	Y	110	AC,P5V,SU+Zn
Integra	CXINT108VT	VT2P	Y	108	AC,P5V,SU+Zn,PT
LG Seeds	LG58C48VT2PRIB	VT2P	Y	108	AC,P5V
LG Seeds	LG61C34STXRIB	STXP	Y*	111	AC,P5V
NK Brand	NK1040-AA	AA	Y	110	CM,C5,Va
NK Brand	NK1188-AA	AA	Y	111	CM,C5,Va
NuTech	66C2Q	QR	Y	106	Lum, L1
NuTech	66D1AM	AM	Y	106	Lum, L1
NuTech	68A9AM	AM	Y	108	Lum, L1
NuTech	70B4AM	AM	Y	110	Lum, L1
NuTech	70F6Q	QR	Y	110	Lum, L1
Pioneer	P1108Q	QR	Y	111	Lum, L1
Purple Ribbon	23A08	VT2P	Y	108	AC,P2
Purple Ribbon	23A10	VT2P	Y	110	AC,P2
Purple Ribbon	23A11 TRE	TRE	Y	111	AC,P2
Purple Ribbon	24A09	VT2P	Y	109	AC,P2
Renk	RK703PWE	PCE	N	106	Lum,P5V
Renk	RK707TRE	TRE	N	105	AC,P5V,B300
Renk	RK766SSPRO	STXP	N	109	AC,P5V,B300
Renk	RK773TRE	TRE	N	109	AC,P5V,B300
Renk	RK811PWE	PCE	N	111	Lum,P5V
Sun Prairie	SP2562	TRE	N	109	AC
Wyffels	W5406	VT2P	N	108	AC,P5
Wyffels	W5778RIB	STX	Y	109	CM,C2,Vi,Va

Company/Brand	Brand/Product	Technology	RIB	RM	Seed Treat.
Wyffels	W6215	TRE	N	109	CM,C2,Vi,Va
Wyffels	W6886	VT2P	N	111	AC,P5
Wyffels	W7048	STX	N	111	AC,P5

\* FIRST does not inspect products for refuge blend. N\* indicates the product was entered without a refuge component by the sponsoring seed company. Prior year entries may contain refuge blend.

## 2023 Corn - Illinois East Central [ ILEC ]

### Full-Season Test Products (54 Total)

Company/Brand	Product/Brand	Technology	RIB	RM	Seed Treat.
AgVenture	AV2816AM	AM	Y	116	Lum, L1
AgVenture	AV3213AM	AM	Y	113	Lum, L1
AgVenture	AV7913AM	AM	Y	113	Lum, L1
Brevant	B14H38AM	AM	Y	114	Lum, L1
Burrus	7F33 VT2P	VT2P	Y	114	Lum, L1-2023
Burrus	7P71 VT2P	VT2P	Y	115	AC,P5V,EDC-B
DeKalb	DKC64-64RIB	STX	Y	114	AC,P5V,EDC-EL
DeKalb	DKC65-95RIB	VT2P	Y	115	AC,P5V,EDC-EL
DeKalb	DKC66-18RIB	VT2P	Y	116	AC,P5V,EDC-EL
FS InVision	FS 6217X RIB	STX	Y	112	AC,P5V,EDC-EL
FS InVision	FS 6432P RIB	STXP	Y	114	AC,P5V,EDC-EL
FS InVision	FS 6595V RIB	VT2P	Y	115	AC,P5V,EDC-EL
FS InVision	FS 6625V RIB	VT2P	Y	116	AC,P5V,EDC-EL
FS InVision	FS 6627T RIB	TRE	Y	116	AC,P5V,EDC-EL
Golden Harvest	G14B32-DV	DV	Y	114	AVC,C1,Va
Golden Harvest	G15J91-V	V	Y	115	CM,C5,Va
Great Heart	HT-7256DGV2P	VT2PDG	Y	112	P5V
Great Heart	HT-7317VT2P	VT2P	N	113	P5V
Great Heart	HT-7329PCE	PCE	N	113	P5V
Great Heart	HT-7499TRE	TRE	Y	114	P5V
Great Heart	HT-7500TRE	TRE	N	115	P5V
Integra	6244 PWE	PCE	N	112	AC,P5V
Integra	6274 VT2PRIB	VT2P	Y	112	AC,P5V
Integra	6493 VT2PRIB	VT2P	Y*	114	AC,P5V,SU+Zn
LG Seeds	LG63C82VTDG	VT2PDG	Y*	113	AC,P5V
LG Seeds	LG66C06VT2RIB	VT2P	Y*	116	AC,P5V
NK Brand	NK1333-AA	AA	Y	113	CM,C5,Va
NK Brand	NK1480-DV	DV	Y	114	AVC,C1,Va
NuTech	72A5Q	QR	Y	112	Lum, L1
NuTech	73A4AM	AM	Y	113	Lum, L1
NuTech	73A6Q	QR	Y	113	Lum, L1
NuTech	74C4AM	AM	Y	114	Lum, L1
NuTech	75C1AM	AM	Y	115	Lum, L1
Pioneer	P1108Q	QR	Y	111	Lum, L1
Pioneer	P1278Q	QR	Y	112	Lum, L1
ProHarvest	8360 VT2PRIB	VT2P	Y*	113	AC,P5V,Va
ProHarvest	83P66 VT2P	VT2P	N	113	AC,P5V,Va
ProHarvest	84P78 TRERIB	TRE	Y	114	AC,P5V,Va
Purple Ribbon	23A12	VT2PDG	Y	112	AC,P2
Renk	RK876VT2P	VT2P	N	113	AC,P5V,B300
Renk	RK895DGV2P	VT2PDG	N	113	AC,P2
Renk	RK907SSTX	STX	N	115	AC,P5V

Company/Brand	Brand/Product	Technology	RIB	RM	Seed Treat.
Renk	RK915VT2P	VT2P	N	115	AC,P2
Renk	RK958VT2P	VT2P	N	115	AC,P2
Stone	1304TRE	TRE	Y	113	AC,P5V
Stone	1504TRE	TRE	Y	115	AC,P5V
Stone	6542RIB	VT2P	Y	115	AC,P2,B360
Sun Prairie	SP2788	VT2P	N	113	AC
Sun Prairie	SP2789	VT2P	N	113	AC
Wyffels	W7759	STXP	N	113	AC,P5
Wyffels	W7876RIB	VT2P	Y	114	CM,C2,Vi,Va
Wyffels	W7945RIB	TRE	Y*	114	CM,C2,Vi,Va
Wyffels	W8086	VT2P	N	114	AC,P5
Wyffels	W8108	STX	N	114	AC,P5

\* FIRST does not inspect products for refuge blend. N\* indicates the product was entered without a refuge component by the sponsoring seed company. Prior year entries may contain refuge blend.

## Footnotes and Abbreviations Descriptions

### Brand Footnotes

---

CK	Identifies a check product included in early- and full-season tests.
GC	Grower Comparison product included by FIRST when space permits.
^	Innotech™ brand seed is distributed by Rob-See-Co, LLC. Innotech™ is a trademark of Syngenta. Power Plus® brand seed is distributed by Burrus. Power Plus® is a registered trademark of Corteva Agriscience.

### Corn Technologies

---

AA	Agrisure® Above (CB,HX,LL,GT), formerly Agrisure® 3120
AM	Optimum® AcreMax®
DV	DuracadeViptera™ (Vip,CB,HX,RW,RW2,LL,GT), formerly Agrisure Duracade® 5222
PCE	PowerCore® Enlist®
QR	Qrome®
STX	SmartStax®
STXP	SmartStax® Pro with RNAi Technology
TRE	Trecepta®
V	Viptera™ (Vip,CB,HX,LL,GT), formerly Agrisure Viptera® 3220
VT2P	VT Double PRO®
VT2PDG	DroughtGard® with VT Double PRO®

---

NOTE: The refuge component genetics may vary in a refuge blend seed product.

## Corn Seed Treatments\*

---

NA	Not Available
AC	Acceleron® unspecified
AC,P2	Acceleron® 250
AC,P2,B360	Acceleron® 250 with BioRise™ B-360 ST
AC,P5	Acceleron® 500
AC,P5V	Acceleron® Poncho 500/Votivo
AC,P5V,B300	Acceleron® Poncho 500/Votivo with B-300 SAT
AC,P5V,EDC-B	Acceleron® BASIC Poncho 500/Votivo with Enhanced Disease Control
AC,P5V,EDC-EL	Acceleron® ELITE Poncho 500/Votivo with Enhanced Disease Control
AC,P5V,SU+Zn	Acceleron® Poncho 500/Votivo, StepUp SP, StepUp Zn
AC,P5V,SU+Zn,PT	Acceleron® Poncho 500/Votivo, StepUp SP, StepUp Zn with PhycTerra® ST
AC,P5V,Va	Acceleron® Poncho 500/Votivo, Vayantis®
AVC,C1,Va	Avicta® Complete 1250 with Vayantis®
BPS	Burrus PowerShield
CM,C2	CruiserMaxx® 250
CM,C2,Vi,Va	CruiserMaxx® 250 with Vibrance, Vayantis®
CM,C5,Va	CruiserMaxx® 500 with Vayantis®
Lum, L1	LumiGEN, Lumisure 1250
Lum, L1-2023	LumiGEN 1250, Zeltera, Lumivia, Lumialza, Serifel®, Lumiflex, 2023
Lum,P5V	LumiGEN™ Poncho 500/Votivo
P5V	Poncho 500/Votivo
Treated	Treated seed, unspecified

---

\* Seed treatments may include unspecified plant health promoting components.