

**2023 Silage Harvest Report for Pennsylvania Southeast [ PASE ]**

Alan and Paul Mason, Chester County, PA 19362 [ NOTTINGHAM ]



Test by: Mid-Atlantic Independent Tech. Svcs., Mount Joy, PA

PREV. CROP/HERB: Corn / Glyphosate, atrazine

SOIL INFORMATION: Chrome silt loam, well drained, no-till, very high P, medium K, 5.4 pH, 4.2% OM, non-irrigated

UNITS N-P-K Applied: 200-160-255, N Applied: 45 Fall, 65 Spring, 90 Sidedress

PEST MANAGEMENT: Glyphosate, Ethos, Capreno, atrazine

SEEDED - RATE: May 17 32,500 /A

HARVESTED - STAND: Sep 11 30,200 /A

**113 - 119 Day CRM**

L2023PASE19

**Top 30 of 36 Products Tested, 3 Rep. Yield Average**

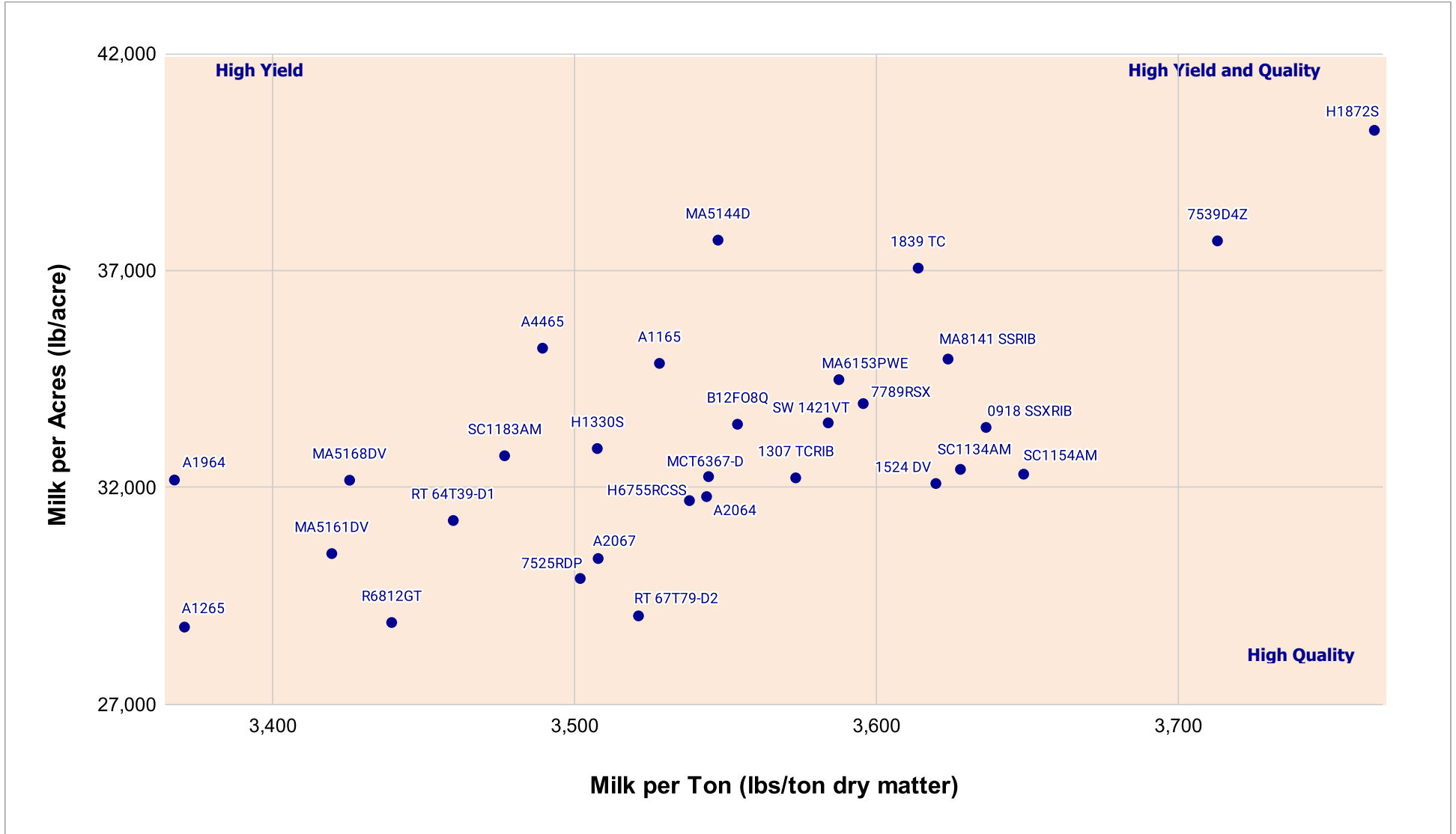
Company/Brand	Product/Brand†	Technology†	CRM	Yield at		Dry Matter (%)	Crude Protein (% DM)	ENERGY			FIBER			Milk/Ton DM††		Milk/ (Lbs)↓
				65% H2O (Tons/A)	Stand (x1,000)			Starch (% DM)	In-Situ SD 7 h (%)	NEL (Mcal/lb)	NDF (% DM)	NDFd 30h* (% of NDF)	uNDF 240 h (%DM)	(Lbs)	Rank	
Hubner	H1872S	STX	118	<b>30.5</b>	30.7	36.1	8.0	45.9	58.30	0.83	28.6	53.5	11.1	3,765	1	40,234
Mid-Atlantic	MA5144D	D	114	<b>30.4</b>	29.3	36.3	7.5	37.2	63.58	0.76	36.6	55.2	12.4	3,547	14	37,703
Chemgro	7539D4Z	D	115	<b>29.0</b>	31.9	35.5	8.4	40.3	58.38	0.79	33.7	53.8	11.1	3,713	2	37,686
Revere	1839 TC	TRE	116	<b>29.3</b>	28.5	37.5	7.4	42.8	61.01	0.79	33.2	55.1	12.4	3,614	8	37,059
Augusta	A4465	DV	115	<b>28.8</b>	29.7	34.0	8.1	36.4	59.79	0.76	38.1	53.0	13.6	3,489	23	35,213
Mid-Atlantic	MA8141 SSRIB	STX	116	27.6	29.8	32.3	8.3	38.6	60.42	0.78	35.1	53.8	12.8	3,624	6	34,962
Augusta	A1165	VT2P	115	<b>28.2</b>	29.0	35.3	7.8	34.8	57.82	0.76	37.6	53.6	13.9	3,528	18	34,863
Mid-Atlantic	MA6153PWE	PC	115	27.5	30.2	33.9	8.6	39.4	57.38	0.78	34.3	52.4	12.4	3,587	10	34,488
Chemgro	7789RSX	STX	117	27.0	30.4	31.4	8.0	37.3	61.42	0.78	35.6	54.7	12.3	3,596	9	33,936
Seedway	SW 1421VT	VT2P	114	26.7	31.2	33.3	9.0	36.4	57.39	0.78	35.5	53.5	12.5	3,584	11	33,492
Brevant	B12FO8Q	QR	112	26.9	31.6	32.5	8.9	35.2	60.12	0.75	37.8	55.9	11.8	3,554	13	33,460
Revere	0918 SSXRIB	STX	109	26.2	29.6	33.6	8.6	38.4	61.75	0.80	33.9	53.6	10.5	3,636	4	33,387
Hubner	H1330S	STX	113	26.8	29.7	32.1	8.5	33.8	58.95	0.75	37.7	54.0	12.8	3,507	21	32,900
Seed Consultants	SC1183AM	AM	118	26.9	30.8	32.1	7.8	35.5	63.52	0.74	38.3	54.8	13.9	3,477	24	32,733
Seed Consultants	SC1134AM	AM	113	25.5	30.2	32.1	8.5	38.7	58.65	0.78	34.7	53.6	11.8	3,628	5	32,420
Seed Consultants	SC1154AM	AM	115	25.3	30.8	30.6	9.0	35.8	54.02	0.77	36.0	57.3	11.5	3,649	3	32,309
Masters Choice	MCT6367-D	VT2PDG	113	26.0	28.5	33.9	8.0	35.7	60.29	0.77	37.9	56.0	10.8	3,544	15	32,253
Revere	1307 TCRIB	TRE	113	25.8	29.6	33.5	8.3	37.9	65.25	0.77	35.7	51.0	12.1	3,573	12	32,224
Augusta	A1964	3110	114	27.3	31.8	34.5	8.2	34.7	68.70	0.76	37.3	50.4	13.4	3,367	30	32,175
Mid-Atlantic	MA5168DV	DV	116	26.8	30.6	29.4	9.0	33.0	63.27	0.76	37.6	53.3	12.9	3,425	27	32,170
Revere	1524 DV	DV	115	25.3	31.0	32.9	7.7	40.9	67.79	0.79	34.3	55.3	12.3	3,620	7	32,094
Augusta	A2064	DV	114	25.6	28.4	33.8	7.7	35.9	65.53	0.78	36.5	56.2	11.1	3,544	16	31,792
Hubner	H6755RCSS	STX	114	25.6	31.8	33.9	7.9	36.8	64.04	0.77	36.4	52.1	12.6	3,538	17	31,700
Redtail	RT 64T39-D1	D	114	25.8	28.7	32.2	8.4	33.4	64.21	0.76	38.0	55.4	12.2	3,460	25	31,241
Mid-Atlantic	MA5161DV	DV	116	25.5	29.6	32.1	8.3	35.1	65.04	0.77	36.6	51.1	13.6	3,419	28	30,479
Augusta	A2067	DV	117	24.7	29.8	32.6	8.3	37.3	65.50	0.77	36.6	52.8	13.1	3,508	20	30,365
Chemgro	7525RDP	VT2P	115	24.4	30.6	33.8	8.9	32.2	51.50	0.74	39.7	54.9	13.4	3,502	22	29,905
Redtail	RT 67T79-D2	DV	117	23.6	30.5	31.4	8.7	34.7	58.37	0.77	37.1	54.5	12.4	3,521	19	29,043
Pine Creek	R6812GT	3000GT	118	24.0	31.0	31.0	8.6	33.8	54.43	0.75	39.3	53.3	13.1	3,439	26	28,890
Augusta	A1265	DV	115	24.4	30.3	33.5	8.1	36.3	65.52	0.75	39.4	55.3	15.0	3,371	29	28,786

<i>Robin Kauffman</i>	Average =	<b>26.3</b>	<b>30.2</b>	<b>33.0</b>	<b>8.3</b>	<b>35.5</b>	<b>61.1</b>	<b>0.80</b>	<b>37.3</b>	<b>53.9</b>	<b>12.8</b>	<b>3,493</b>	<b>32,999</b>
	LSD(0.10) =	1.6											
	LSD(0.25) =	0.8											
	C.V. =	5.8											

† See last page for Product/Brand, Technology and Type information. †† Milk/ton: calculated from Rock River data using Milk2006 Traditional 48 hour. \*Traditional Goering & Van Soest, Cornell University Method. **Bold** values significantly better than test average. **ns** = not significant

**TEST COMMENTS:** *Planting conditions were good. The plot was planted in minimum-till after manure application with good moisture to start. Rainfall was slightly above average for the summer, and corn did not show much signs of stress. Disease pressure was low with the help of fungicide applications. Overall rating of the plot is a 8 out of 10. (10=best)*

Yield vs Quality Graph

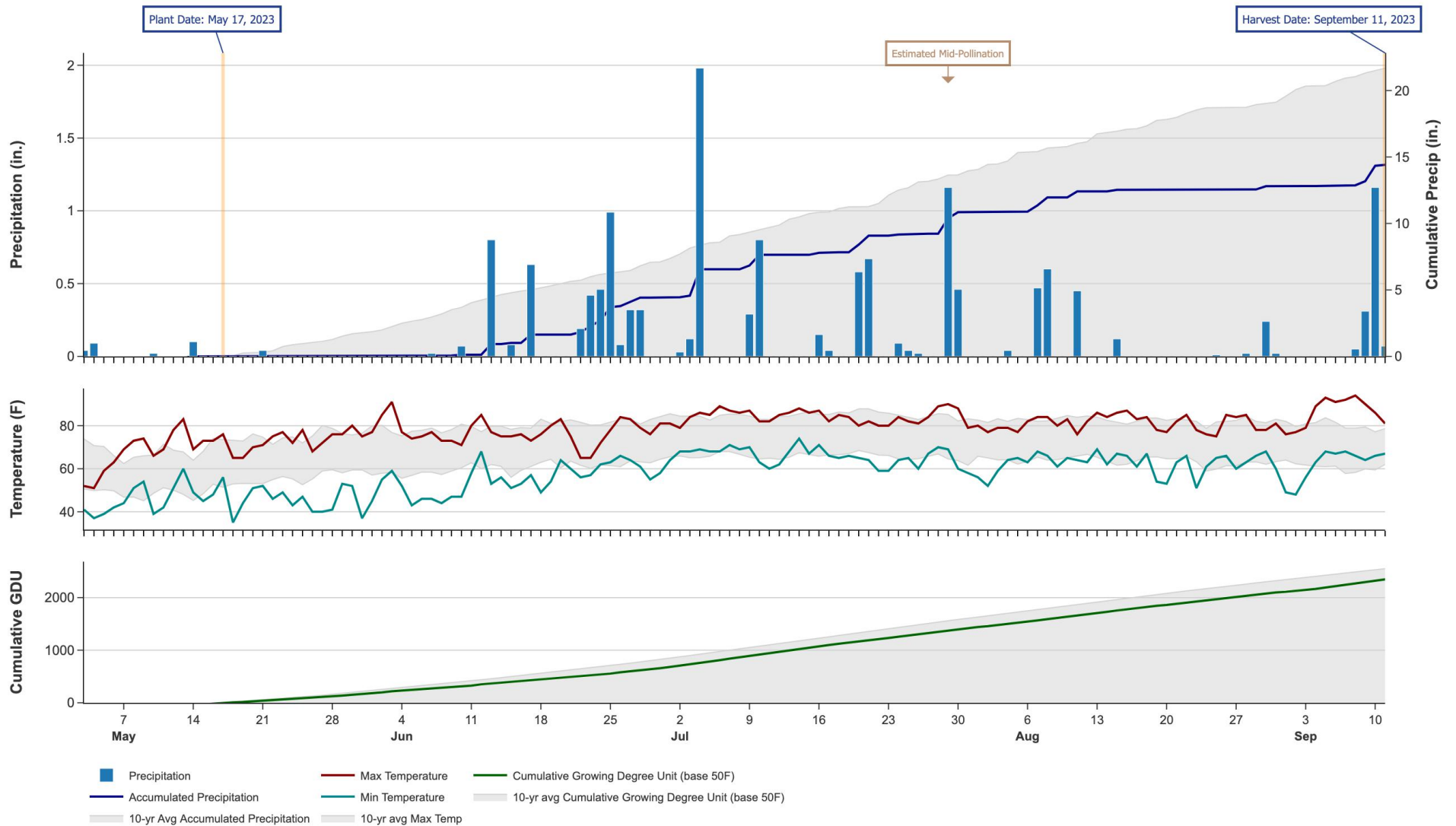


# 2023 Corn Silage - Pennsylvania Southeast [ PASE ]

## Weather Conditions Summary at NOTTINGHAM, PA

Weather Data Retrieved: 09/28/2023

Monthly Total	May*	Jun	Jul	Aug	Sep*	Total
Precip (in)   (Diff)	0.3   4.3 (-4.0)	4.4   5.3 (-1.0)	6.4   6.8 (-0.4)	2.0   5.2 (-3.2)	1.6   2.6 (-1.0)	14.7   24.3 (-9.6)
GDU   Avg (Diff)	308   359 (-51)	494   606 (-112)	765   782 (-17)	674   717 (-43)	250   225 (+24)	2491   2691 (-200)



\* First monthly total starts on the date 14 days prior to planting and final monthly total ends on the harvest date.

Note: Weather information from PRISM Climate Group. Data may be revised by the provider after retrieval. FIRST will not revise or update reports to reflect any weather data changes. For information purposes only.

## 2023 Corn Silage - Pennsylvania Southeast [ PASE ]

### All-Season Test Products (36 Total)

Company/Brand	Product/Brand	Technology	RIB	RM	Seed Treat.
AgriGold	A636-16	VT2P	N*	106	Tr
Augusta	A1165	VT2P	N	115	CM,C2
Augusta	A1265	DV	N	115	CM,C2
Augusta	A1964	3110	N	114	CM,C2
Augusta	A2064	DV	Y	114	AVC
Augusta	A2067	DV	Y	117	CM,C2
Augusta	A4465	DV	N	115	CM,C2
Brevant	B12FO8Q	QR	Y	112	Lum,L1
Brevant	B15B75SX	STX	N*	115	Lum,L1
Chemgro	7444PC	PC	N	114	CM,C5
Chemgro	7525RDP	VT2P	Y	115	AC,P2
Chemgro	7539D4Z	D	Y	115	CM,C2
Chemgro	7789RSX	STX	Y	117	AC,P5V
Hubner	H1330S	STX	Y	113	AC,P5V,B360
Hubner	H1872S	STX	Y	118	AC,P5V,B360
Hubner	H6663RCSS	STX	Y	113	AC,P5V
Hubner	H6755RCSS	STX	Y	114	AC,P5V,B360
Masters Choice	MCT6367-D	VT2PDG	Y	113	Tr
Mid-Atlantic	MA5144D	D	Y*	114	CM,C2
Mid-Atlantic	MA5161DV	DV	Y*	116	CM,C2
Mid-Atlantic	MA5168DV	DV	Y*	116	CM,C2
Mid-Atlantic	MA6153PWE	PC	Y*	115	CM,C2
Mid-Atlantic	MA8141 SSRIB	STX	Y	116	AC,P2
Pine Creek	R6812GT	3000GT	N	118	Tr
Redtail	RT 64T39-D1	D	Y	114	CM,C2
Redtail	RT 67T79-D2	DV	Y	117	CM,C2
Revere	0918 SXXRIB	STX	Y	109	AC,P5
Revere	1307 TCRIB	TRE	Y	113	AC,P5
Revere	1524 DV	DV	Y	115	AC,P5
Revere	1839 TC	TRE	Y	116	AC,P5
Seed Consultants	SC1134AM	AM	Y	113	Lum,L1
Seed Consultants	SC1154AM	AM	Y	115	Lum,L1
Seed Consultants	SC1183AM	AM	Y	118	Lum,L1
Seedway	SW 1421VT	VT2P	Y	114	AC,P5
Seedway	SW 1579SS	STX	Y	115	AC,P5
Seedway	SW 1661SS	STX	Y	116	AC,P5

\* FIRST does not inspect products for refuge blend. N\* indicates the product was entered without a refuge component by the sponsoring seed company. Prior year entries may contain refuge blend.

## Footnotes and Abbreviations Descriptions

### Brand Footnotes

---

GC Grower Comparison product included by FIRST when space permits.

### Corn Silage Technologies

---

3000GT	Agrisure® 3000GT
3110	Agrisure® Viptera® 3110 (Vip, CB,LL,GT)
AM	Optimum® AcreMax®
D	Duracade™ (CB,HX,RW,RW2,LL,GT), formerly Agrisure Duracade® 5122
DV	DuracadeViptera™ (Vip,CB,HX,RW,RW2,LL,GT), formerly Agrisure Duracade® 5222
PC	PowerCore®
QR	Qrome®
STX	SmartStax®
TRE	Trecepta®
VT2P	VT Double PRO®
VT2PDG	VT Double PRO® DroughtGard®

---

### Corn Silage Seed Treatments\*

---

NA	Not Available
AC,P2	Acceleron® 250
AC,P5	Acceleron® 500
AC,P5V	Acceleron® Poncho 500/Votivo
AC,P5V,B360	Acceleron® Poncho 500/Votivo with BioRise™ B-360 ST
AVC	Avicta® Complete Corn
CM,C2	CruiserMaxx® 250
CM,C5	CruiserMaxx® 500
Lum,L1	LumiGEN™, Lumisure 1250
Tr	Treated - unspecified treatment

---

\* Seed treatments may include unspecified plant health promoting components.