

Test by: M&D Seed Research, LLC Van Buren, IN

2023 Soybeans Top 30 Harvest Report

Indiana North [INNO] HOWE, IN

David Larimer, Lagrange County, IN

All-Season Test Maturity Group **2.4 - 3.4**
S2023INNO08

Top 30 of 72 For Gross Income
(Sorted by Yield)
Average of (3) Replications

PREV. CROP/HERB: Corn / Acuron, Roundup

SOIL DESCRIPTION: Tracy sandy loam, well drained,
irrigated

SOIL CONDITION: very high P, very high K, 5.9 pH,
1.3% OM, 7.0 CEC

TILLAGE/CULTIVATION: Conventional W/O Fall Till

PEST MANAGEMENT: Antares Complete, Roundup
Power Max, Tapout, Sinister

Applied N-P-K (units): 0-0-0

SEEDED - RATE - ROW: May 25 140.0 /A 30" spacing

HARVESTED - STAND: Oct 18 132.5 /A

TEST COMMENTS:

This is a nice location that started off with good emergence and uniformity early during the growing season. Above-average rains during July through the beginning of August led to a severe infestation of white mold that seriously impacted yields within the plot. The entire plot showed some level of pressure with some areas being affected more than others. Unfortunately, data was rejected due to very high variance in the yield data collected from the white mold damage.

Company/Brand	Product/Brand	Yield†	GR	GR Moist.	Yield Bu/a	Moisture %	lodging %	Stand (x 1000)	Gross Income \$/Acre	Rank
MR Brand	MR24-42330 +	53.87	2.4	R	47.8	14.3	1	133.0	511	1
Agri	MR21210 +	53.87	2.1	R	47.1	14.8	1	133.3	499	2
Agri	MR 24440 +	53.87	2.4	R	46.9	14.9	1	132.7	500	3
Agri	MR24440 g +	54.0	2.3	R	46.8	14.9	1	131.7	508	4
Stans	MR24440 +	54.0	2.0	R	46.4	15.0	1	131.2	507	5
Stans	MR24440 +	53	2.3	R	46.4	14.9	1	131.0	516	6
MR Brand	MR24-44023 g +	53	2.0	R	46.2	15.1	1	131.3	512	7
Specialty	MR24440 GC +	54.0	2.0	R	45.9	15.0	1	131.3	507	8
FG INNOV	MR 24420 +	53.87	2.1	R	45.9	15.2	1	131.0	505	9
Hydraf	MR24420 +	53.87	2.0	R	45.9	15.2	1	131.0	504	10
Golden Harvest	MR24440 g +	53	2.0	R	45.9	15.2	1	130.7	503	11
Agri	MR 24440 +	53	2.2	R	45.7	15.2	1	131.0	500	12
GM Seed	EXPERIMENTAL	53	2.0	R	45.6	14.8	1	132.7	500	13
FG INNOV	MR 24420 +	53.87	2.0	R	45.6	14.9	1	134.7	527	14
Hydraf	MR24420 +	53	2.0	R	45.6	15.2	1	130.7	517	15
MR	MR24420 g +	53	2.1	R	45.6	15.2	1	130.7	516	16
Purple Haze	MR24420 +	53	2.0	R	45.6	15.1	1	130.0	512	17
Agri	MR24440 g +	54.0	2.3	R	45.6	15.2	1	131.3	510	18
GM Seed	EXPERIMENTAL	53	2.0	R	45.5	14.9	1	131.7	508	19
MR	MR 24440 +	53	2.4	R	45.1	14.9	1	131.7	507	20
Hydraf	MR24420 +	53	2.0	R	45.0	14.9	1	132.7	503	21
FG INNOV	MR 24420 +	54.0	2.0	R	45.1	14.9	1	132.0	493	22
Stans	MR 24420 +	53	2.3	R	44.9	14.2	1	132.7	491	23
Golden Harvest	MR24440 g +	53.87	2.0	R	44.9	15.3	1	133.7	499	24
MR	MR24420 g +	53	2.0	R	44.9	15.2	1	134.7	498	25
MR	MR 24420 +	53	2.0	R	44.7	15.0	1	134.0	497	26
Agri	MR24440 g +	54.0	2.7	R	44.5	15.2	1	131.7	492	27
Stans	MR 24440 +	53	2.0	R	44.5	14.8	1	130.7	477	28
FG INNOV	MR 24420 +	53	2.0	R	44.7	15.1	1	131.0	474	29
FG INNOV	MR 24420 +	53	2.7	R	44.5	14.6	1	131.7	472	30

REJECTED

Matt Turner

Matt Turner
mattturner1979@yahoo.com, (317) 606-9040

Averages = **35.0** **14.8** **1** **132.5** **453**
LSD (0.10) = 9.0 ns ns
LSD (0.25) = 4.7 ns ns
C.V. = 24.4

Historic yield: 63.99 bu/a, 11 yr(s)

Yield & Income Factors: Base Moisture = 13.0% Shrink = 1.3 Drying = \$0.04 Prices: GMO = \$13.00; non-GMO = \$13.75

Report Date: 10/19/2023

† See last page for abbreviation descriptions. Dark colored row identifies the check product found in early- and full-season tests. **Bold** yields are significantly above test average by LSD(0.10). **Italicized** brands exceed the grain moisture limit for this test. **ns** = column values not significantly different. ↗ Links to full product yield results at www.firstseedtests.com

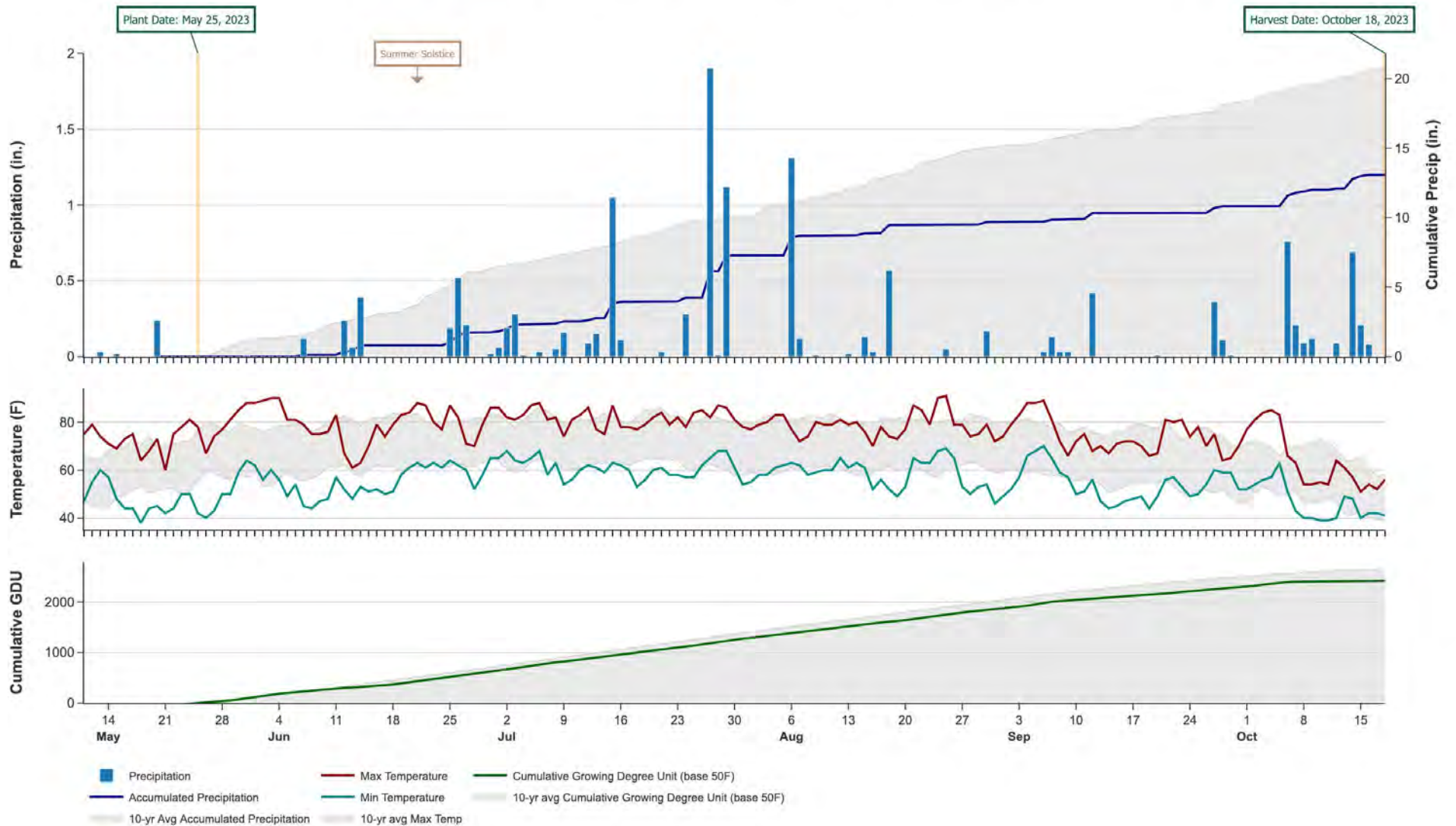
Additional reports available at www.firstseedtests.com

©2023, All rights reserved to Farmers' Independent Research of Seed Technologies, LLC.

2023 Soybeans - Indiana North [INNO]

Weather Conditions Summary at HOWE, IN

Monthly Total	May*	Jun	Jul	Aug	Sep	Oct*	Total
Precip (in) (Diff)	0.3 3.4 (-3.1)	1.8 5.2 (-3.4)	5.5 3.8 (+1.8)	2.4 5.0 (-2.6)	1.1 3.2 (-2.1)	2.2 2.4 (-0.1)	13.4 22.9 (-9.6)
GDU Avg (Diff)	279 268 (+10)	520 601 (-81)	658 679 (-21)	576 635 (-59)	436 473 (-37)	127 152 (-25)	2596 2810 (-214)



* First monthly total starts on the date 14 days prior to planting and final monthly total ends on the harvest date.

Note: Weather information from PRISM Climate Group. Data may be revised by the provider after retrieval. FIRST will not revise or update reports to reflect any weather data changes. For information purposes only.

2023 Soybeans - Indiana North [INNO]

All-Season Test Products (72 Total)

Company/Brand	Product/Brand	Technology	SCN	RM	Seed Treat.
Apex	AE2940S	E3,ST	R	2.9	PU
Apex	AE3131S	E3,ST	R	3.1	PU
Apex	AE3340	E3	R	3.3	PU
Asgrow	AG27XF3 §	RXF	R	2.7	ACi,IL
Asgrow	AG30XF4 §	RXF	R	3.0	ACi,IL
Asgrow	AG33XF3 §	RXF	R	3.3	ACi,IL
Dairyland	DSR-2444E	E3	R	2.4	Lum,Lu,IL
Dairyland	DSR-2562E	E3	R	2.5	Lum,Lu,IL
Dairyland	DSR-2691E	E3	R	2.6	Lum,Lu,IL
Dairyland	DSR-2717E	E3	R	2.7	Lum,Lu,IL
Dairyland	DSR-2902E	E3	R	2.9	Lum,Lu,IL
Dairyland	DSR-3177E	E3	R	3.1	Lum,Lu,IL
Dairyland	DSR-3499E	E3	R	3.4	Lum,Lu,IL
DONMARIO	DM30E03	E3	R	3.0	CMB-APX,SA
Dyna-Gro	S25EN74	E3	R	2.5	EQ,VA,Sa
Dyna-Gro	S29EN62	E3	R	2.9	EQV,Sa,VA
Dyna-Gro	S31EN14	E3	R	3.1	EQV,Sa,VA
Dyna-Gro	S31EN91	E3	R	3.1	EQV,Sa,VA
Dyna-Gro	S33EN42	E3	R	3.3	EQV,Sa,VA
Ebberts	303XF	RXF	R	3.0	Ebberts
Ebberts	E2570 E3	E3	R	2.5	Ebberts
Ebberts	E2980 E3	E3	R	2.9	Ebberts
Ebberts	E3171 E3	E3	R	3.1	Ebberts
Ebberts	E3370 E3	E3	R	3.3	Ebberts
Ebberts	E3380 E3	E3	R	3.3	Ebberts
Ebberts	E3580 E3	E3	R	3.4	Ebberts
FS HiSOY	HS 24E30	E3	R	2.4	ACi,SA
FS HiSOY	HS 25E30	E3	R	2.5	ACi,SA
FS HiSOY	HS 26E20	E3	R	2.6	ACi,SA
FS HiSOY	HS 27E30	E3	R	2.7	ACi,SA
FS HiSOY	HS 28F30	RXF	R	2.8	ACi,SA
FS HiSOY	HS 31E20	E3,ST	R	3.1	ACi,SA
FS HiSOY	HS 32E30	E3	R	3.2	ACi,SA
FS HiSOY	HS 33E20	E3,ST	R	3.3	ACi,SA
GDM Seed	EXPERIMENTAL 1	E3	R	2.7	CMB-APX,SA
GDM Seed	EXPERIMENTAL 2	E3	R	2.9	CMB-APX,SA
Golden Harvest	GH2674E3 §	E3	MR	2.6	CMB-APX,SA
Golden Harvest	GH2814E3S §	E3,ST	MR	2.8	CMB-APX,SA
Golden Harvest	GH3043E3	E3	R	3.0	CMB-APX,SA
Golden Harvest	GH3373E3S	E3,ST	R	3.3	CMB-APX,SA
NK Brand	NK24-A2E3S	E3,ST	R	2.4	CMB-APX,SA
NK Brand	NK26-M6E3 §	E3	MR	2.6	CMB-APX,SA

Company/Brand	Brand/Product	Technology	SCN	RM	Seed Treat.
NK Brand	NK28-B9E3S	E3,ST	MR	2.8	CMB-APX,SA
NK Brand	NK33-W2E3S	E3,ST	R	3.3	CMB-APX,SA
Partners Brand	PB 2524-E3	E3	R	2.5	A3030
Partners Brand	PB 3024-E3S	E3,ST	R	3.0	A3030
Pioneer	P31T64E §	E3	NA	3.1	Lum, LumT, IL
Pioneer	P33A85E §	E3	NA	3.3	Untreated
Pioneer	P34T21SE §	E3,ST	R	3.4	Untreated
ProHarvest	31E37	E3	R	3.1	PU
Purple Ribbon	28E22	E3	MR	2.8	CMB
Purple Ribbon	31E23	E3	MR	3.1	CMB
Purple Ribbon	33E23	E3	MR	3.3	CMB
Specialty	2826XF GC	RXF	MR	2.8	ACi
Specialty	3134XF GC	RXF	MR	3.1	ACi
Specialty	3315XF GC	RXF	R	3.3	ACi
Stine	27EG22 §	E3	R	2.7	ACi
Stine	28EG29 §	E3	R	2.8	ACi
Stine	33EG02 §	E3	R	3.3	ACi
Wyckoff	W2570E3	E3	R	2.5	WyK
Wyckoff	W2785E3	E3,ST	MR	2.7	WyK
Wyckoff	W2885E3	E3	MR	2.8	WyK
Wyckoff	W2980E3	E3	MR	2.9	WyK
Wyckoff	W3085E3	E3,ST	MR	3.0	WyK
Wyckoff	W3171E3	E3,ST	MR	3.1	WyK
Wyckoff	W3380E3	E3	R	3.3	WyK
Wyckoff	W3580E3	E3	MR	3.4	WyK
Xitavo	XO 2444E	E3,ST	R	2.4	PV,IL,OB,Rey
Xitavo	XO 2832E	E3	R	2.8	PV,IL,OB,Rey
Xitavo	XO 3014E	E3,ST	R	3.0	PV,IL,OB,Rey
Xitavo	XO 3224E	E3	R	3.2	PV,IL,OB,Rey
Xitavo	XO 3483E	E3	MR	3.4	PV,IL,OB,Rey

Footnotes and Abbreviations Descriptions

Brand Footnotes

CK	Identifies a check product included in early- and full-season tests.
GC	Grower Comparison product included by FIRST when space permits.
§	United Soybean Board sponsored entry

Soybean Cyst Nematode (SCN) Resistance Rating

S	susceptible
MR	moderate resistance
R	resistant
n/a	info unavailable

Soybeans Technologies

E3	Enlist E3®
RXF	XtendFlex®
ST	Sulfonylurea tolerant

Soybeans Seed Treatments*

NA	Not Available
A3030	Alert 3030 - Partners brand
ACi	Acceleron® Standard Insecticide-Fungicide
ACi,IL	Acceleron® Standard Insecticide-Fungicide, ILeVO
ACi,SA	Acceleron® Standard Insecticide-Fungicide, Salstro®
CMB	CruiserMaxx® Beans
CMB-APX,SA	CruiserMaxx® APX with Salstro®
Ebberts	Ebberts Complete Soybean (Ebberts Field Seeds)
EQ,VA,Sa	Equity VAYO, Salstro®
EQV,Sa,Va	Equity VIP, Salstro®, Vayantis®
Lum,Lu,IL	LumiGEN™, Lumisena™, ILeVO
Lum, LumT, IL	LumiGEN™, LumiTreo, ILEVO
PU	Protect Ultra
PV,IL,OB,Rey	Poncho®/Votivo®, ILeVO, Obvius Plus, Relenya®
Untreated	No seed treatment
WyK	WyCKOAT fueled by Soy-Defense (Wyckoff Hybrids)

* Seed treatments may include unspecified plant health promoting components.