

Test by: F.I.R.S.T. AMC Inc. Mount Carroll, IL

2024 Corn Grain Top 30 Harvest Report

Illinois East Central [ILEC] TUSCOLA, IL

Silver Top Enterprises, Curt Clapper, Douglas County, IL
61953

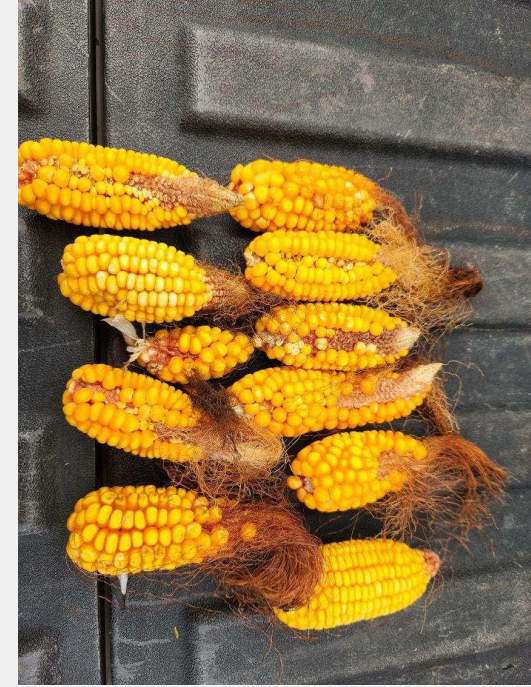
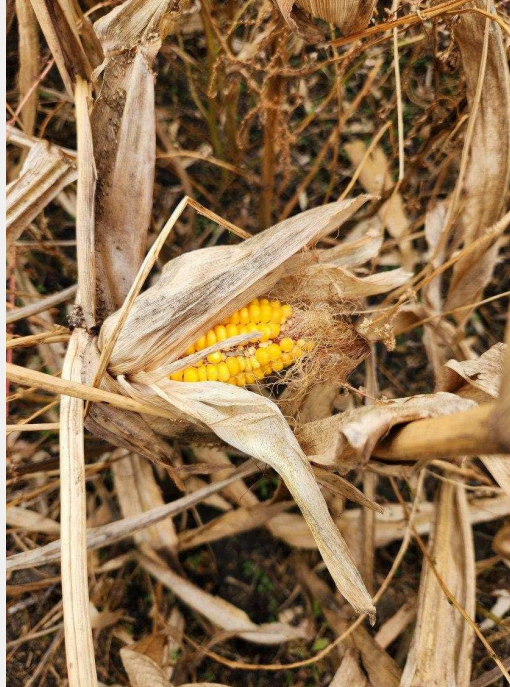
Early-Season Test	105 - 111 Day CRM B2024ILEC23a
Top 30 of 45	For Gross Income (Sorted by Yield) Average of () Replications
PREV. CROP/HERB:	Soybeans / Zidua Pro, Roundup, Amsol Plus, Liberty
SOIL DESCRIPTION:	Flanagan silt loam, moderately drained, non-irrigated
SOIL CONDITION:	Minimum W/O Fall Till, very high P, high K, 6.5 pH, 3.9% OM, 20.2 CEC
PEST MANAGEMENT:	Halex Gt, Aatrex, Amsol Plus, Prefer, Aproach Prima, Lambda Cy & Teb, Fence
FERTILITY - Applied N:	140 Spring, 33 Sidedress, P&K VRT
Applied N-P-K (units):	173-0-0
SEEDED - RATE - ROW:	May 13 37.5 /A 30" spacing
HARVESTED - STAND:	Oct 25

TEST COMMENTS:

This location was very wet in early spring. In a small planting window, Curt was able to work the plot area but did say it was a little heavy. Four days later I could plant the plot, still in somewhat heavy soil conditions. After planting some more wet weather came through and stalled the grower from planting and getting some herbicide down. By then in the front portion of the plot where the early season test was, waterhemp was established very heavy and ended up choking out the plants. Curt's entire field surrounding this plot had no other issues. It was a combination of unlucky weather conditions and extremely robust/tough waterhemp plants that were resistant to post-herbicide treatment.

Company/Brand	Product/Brand	Technol.†	RM	Yield Bu/A ↓	Moisture %	Lodging %	Stand (x 1000)	Gross Income \$/Acre	Rank
---------------	---------------	-----------	----	-----------------	---------------	--------------	-------------------	-------------------------	------

Lost to heavy weed pressure



Nathan Roux

Nathan Roux

nathan.g.roux@gmail.com, (815) 716-3794

Averages =

LSD (0.10) = ns ns ns

LSD (0.25) = ns ns ns

C.V. =

Historic yield: 185.64 bu/a, 28 yr(s)

Yield & Income Factors:

Base Moisture = 15.0%

Shrink = 1.3

Drying = \$0.05

Prices: GMO = \$3.65

Report Date: 10/25/2024

Additional reports available at www.firstseedtests.com

† See last page for abbreviation descriptions. Dark colored row identifies the check product found in early- and full-season tests. **Bold** yields are significantly above test average by LSD(0.10). **Italicized** brands exceed the grain moisture limit for this test. **ns** = column values not significantly different. ↗ Links to full product yield results at www.firstseedtests.com

©2024, All rights reserved to Farmers' Independent Research of Seed Technologies, LLC.

Test by: F.I.R.S.T. AMC Inc. Mount Carroll, IL

2024 Corn Grain Top 30 Harvest Report

Illinois East Central [ILEC] TUSCOLA, IL

Silver Top Enterprises, Curt Clapper, Douglas County, IL 61953

Full-Season Test 112 - 116 Day CRM
B2024ILEC23b

Top 30 of 45 For Gross Income
(Sorted by Yield)
Average of (3) Replications

PREV. CROP/HERB: Soybeans / Zidua Pro, Roundup, Amsol Plus, Liberty

SOIL DESCRIPTION: Flanagan silt loam, moderately drained, non-irrigated

SOIL CONDITION: Minimum W/O Fall Till, very high P, high K, 6.5 pH, 3.9% OM, 20.2 CEC

PEST MANAGEMENT: Halex Gt, Aatrex, Amsol Plus, Prefer, Aproach Prima, Lambda Cy & Teb, Fence

FERTILITY - Applied N: 140 Spring, 33 Sidedress, P&K VRT

Applied N-P-K (units): 173-0-0

SEEDED - RATE - ROW: May 13 37.5 /A 30" spacing

HARVESTED - STAND: Oct 25 36.1 /A

TEST COMMENTS:

This location was very wet in early spring. In a small planting window, Curt was able to work the plot area but did say it was a little heavy. Four days later I could plant the plot, still in somewhat heavy soil conditions. After planting some more wet weather came through and stalled the grower from planting and getting some herbicide down. By then in the front portion of the plot where the early season test was, waterhemp was established very heavy and ended up choking out the plants. Curt's entire field surrounding this plot had no other issues. It was a combination of unlucky weather conditions and extremely robust/tough waterhemp plants that were resistant to post-herbicide treatment.

Company/Brand	Product/Brand	Technol.†	RM	Yield Bu/A ↓	Moisture %	Lodging %	Stand (x 1000)	Gross Income \$/Acre	Rank	
Wyffels	W8086RIB ↗	VT2P	114	268.4	13.7	1	34.8	980	1	
ProHarvest	83P48 STAXPRO ↗	STXP	113	265.9	13.7	1	34.8	971	2	
Great Heart	HT-7500TRE ↗	TRE	115	264.5	13.4	1	37.5	965	3	
LG Seeds	LG64C43VT2RIB ↗	VT2P	114	262.8	13.4	1	36.6	959	4	
ProHarvest	83P66 VT2PRIB ↗	VT2P	113	262.3	14.4	1	37.5	957	5	
FS InVision	FS 6447T RIB ↗	TRE	114	258.3	13.6	1	35.7	943	6	
DeKalb	DKC64-22RIB GC ↗	VT2P	114	257.4	13.5	1	36.6	940	7	
Wyffels	W7499 ↗	STXP	112	256.1	13.0	1	36.6	935	8	
Great Heart	HT-7499TRE ↗	TRE	114	255.4	13.8	1	36.6	932	9	
Integra	6493 VT2PRIB ↗	VT2P	114	253.9	13.5	1	36.6	927	10	
ProHarvest	84P78 TRERIB ↗	TRE	114	249.9	13.0	1	35.7	912	11	
DeKalb	DKC114-99RIB GC ↗	VT4P	114	248.5	13.5	1	36.6	907	12	
Wyffels	W7945RIB ↗	TRE	114	247.7	12.9	1	36.6	904	13	
NuTech	72D4Q ↗	QR	112	247.6	13.1	1	36.6	904	14	
NuTech	74A5PCE ↗	PCE	114	246.2	13.1	1	37.5	899	15	
Great Heart	HT-7360VT2P ↗	VT2P	113	245.9	13.7	1	37.5	898	16	
NuTech	71A7V ↗	VE	111	245.8	13.1	1	35.7	897	17	
NuTech	73A4AM ↗	AM	113	245.1	12.9	1	34.0	895	18	
Burrus	6U77 SSP ↗	STXP	113	244.4	12.7	1	36.6	892	19	
Wyffels	W7759RIB ↗	STXP	113	243.5	13.0	1	35.7	889	20	
Great Heart	HT-7341VT2P ↗	VT2P	113	243.0	14.1	1	36.6	887	21	
FS InVision	FS 6545V RIB ↗	VT2P	115	241.7	13.4	1	36.6	882	22	
LG Seeds	LG63C32SSP ↗	STXP	113	241.2	12.8	1	34.8	880	23	
Renk	RK876VT2P ↗	VT2P	113	240.4	12.9	1	35.7	877	24	
Golden Harvest	G12S75-D ↗	D	112	239.9	13.8	1	34.8	876	25	
Martin	SS-427-4 TRE GC ↗	TRE	112	239.9	12.6	1	37.5	876	26	
Pioneer	P14830AML GC ↗	AML	114	239.5	12.9	1	37.5	874	27	
Golden Harvest	G14B32-DV ↗	DV	114	239.2	12.3	1	37.5	873	28	
Pioneer	P1366Q GC ↗	QR	113	238.8	12.8	1	35.7	872	29	
Wyffels	W7485 ↗	TRE	112	238.6	12.6	1	34.8	871	30	
PIONEER	P1185Q CK	QR	111	229.0	13.3	1	36.6	836	40	
				Averages =	242.1	13.2	1	36.1	884	
				LSD (0.10) =	16.3	0.4	ns			
				LSD (0.25) =	8.5	0.2	ns			
Nathan Roux				C.V. =	6.4					
nathan.g.roux@gmail.com, (815) 716-3794										Historic yield: 185.64 bu/a, 28 yr(s)

Yield & Income Factors: Base Moisture = 15.0% Shrink = 1.3 Drying = \$0.05 Prices: GMO = \$3.65

Report Date: 10/25/2024

† See last page for abbreviation descriptions. Dark colored row identifies the check product found in early- and full-season tests. **Bold** yields are significantly above test average by LSD(0.10). **Italicized** brands exceed the grain moisture limit for this test. **ns** = column values not significantly different. ↗ Links to full product yield results at www.firstseedtests.com

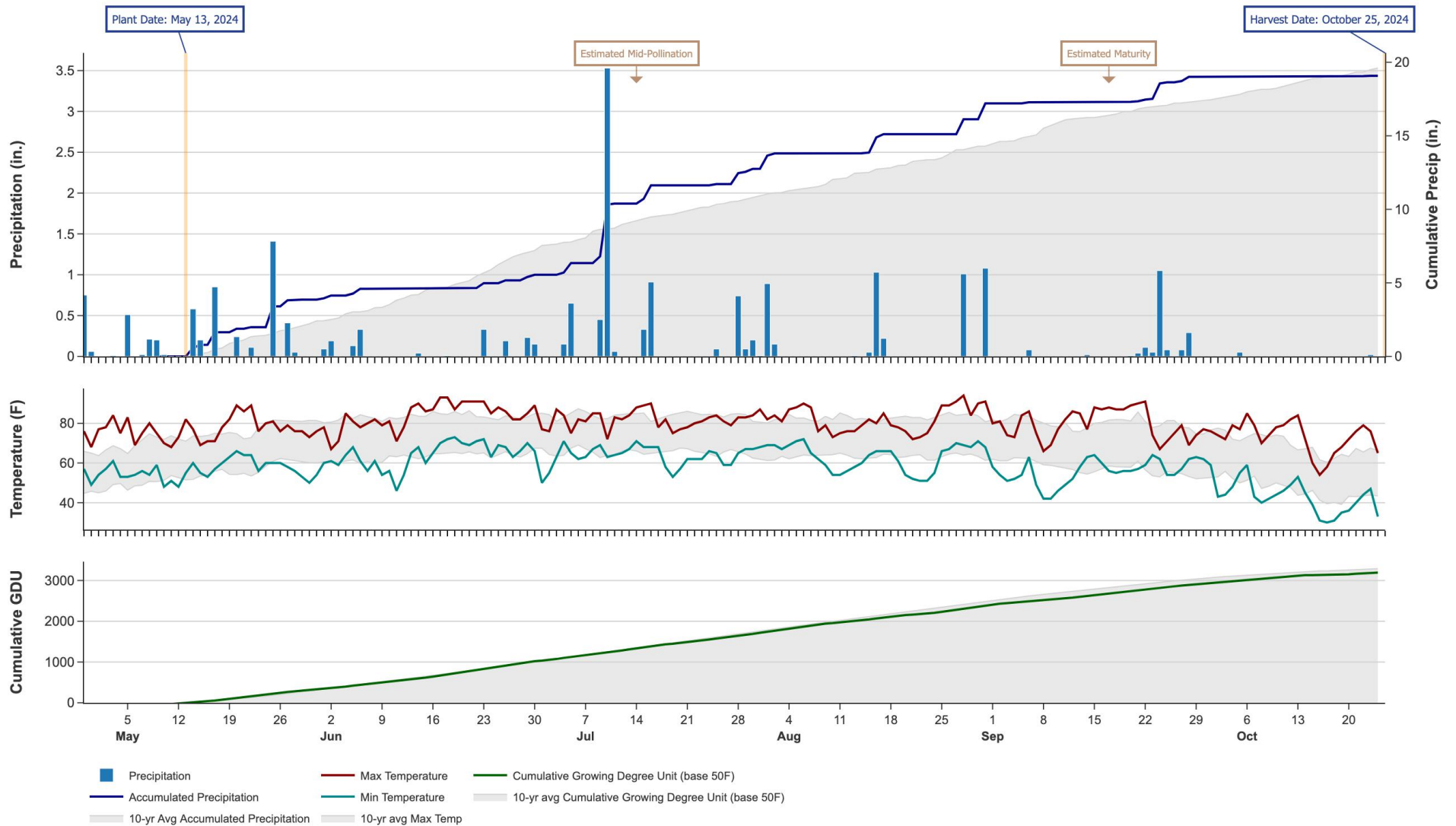
©2024, All rights reserved to Farmers' Independent Research of Seed Technologies, LLC.

Additional reports available at www.firstseedtests.com

2024 Corn - Illinois East Central [ILEC]

Weather Conditions Summary at TUSCOLA, IL

Monthly Total	Apr*	May	Jun	Jul	Aug	Sep	Oct*	Total
Precip (in) (Diff)	0.8 0.8 (0.0)	4.8 4.4 (+0.5)	1.7 4.8 (-3.1)	7.2 3.8 (+3.5)	4.4 3.3 (+1.1)	1.8 3.1 (-1.3)	0.1 2.2 (-2.1)	20.9 22.4 (-1.5)
GDU Avg (Diff)	26 15 (+10)	522 444 (+77)	696 697 (-1)	696 764 (-68)	678 714 (-36)	532 563 (-31)	264 237 (+26)	3414 3437 (-23)



* First monthly total starts on the date 14 days prior to planting and final monthly total ends on the harvest date.

Note: Weather information from PRISM Climate Group. Data may be revised by the provider after retrieval. FIRST will not revise or update reports to reflect any weather data changes. For information purposes only.

2024 Corn - Illinois East Central [ILEC]

Early-Season Test Products (45 Total)

Company/Brand	Product/Brand	Technology	RIB	RM	Seed Treat.
Augusta	A2260	AA	Y*	110	CM,C2
Burrus	4W42 PCE	PCE	Y	108	Lum, L1
Burrus	POWER PLUS 4P27 VE	VE	Y	108	Lum, L1
Burrus	POWER PLUS 4V73AM	AM	Y	109	Lum, L1
DeKalb	DKC110-10RIB GC	STX	Y	110	AC,P5V
FS InVision	FS 5845P RIB	STXP	Y	108	AC,P5V,EDC-EL
FS InVision	FS 5935X RIB	STX	Y	109	AC,P5V
FS InVision	FS 5949PC RA	PCE	Y	109	AC,P5V
FS InVision	FS 6025X RIB	STX	Y	110	AC,P5V
FS InVision	FS 6042F RIB	VT4P	Y	110	AC,P5V,EDC-EL
Golden Harvest	G08U00-V	V	Y	108	CM,C1,Vi,Va
Golden Harvest	G10B61-AA	AA	Y	110	CM,C5,Vi,Va
Golden Harvest	G11V76-AA	AA	Y	111	AVC,C1,Vi,Va
Great Heart	HT-6950PCE	PCE	N	109	F,I
Great Heart	HT-7195TRE	TRE	N	111	F,I
Integra	5775 VT2PRIB	VT2P	Y	107	AC,P5V,St,SU
Integra	5802 VT2PRIB	VT2P	Y	108	AC,P5V,St,SU
Integra	6061 SSRIB	STX	Y	110	AC,P5V,St,SU
Kitchen	KSC 6111 VT2PRIB GC	VT2P	Y	111	Treated
LG Seeds	LG62C73VT2PRO	VT2P	N	111	AC,P5V
Martin	SS-384-5TRE GC	TRE	U	108	AC,P5V
Martin	SS-396-4 VT2RIB GC	VT2P	U	109	AC,P2
NuTech	68C1V	VE	Y	108	LumPro P2
NuTech	69B5V	VE	Y	109	LumPro P2
NuTech	69C7PCE	PCE	Y	109	LumPro P2
NuTech	70B4AM	AM	Y	110	LumPro P2
NuTech	70F6V	VE	Y	110	LumPro P2
Pioneer	P0529Q GC	QR	Y	105	Lum, L1
Pioneer	P1185Q CK	QR	Y	111	Lum, L1
ProHarvest	79P54 STAXPRO	STXP	Y	109	AC,P5V,EDC-EL
ProHarvest	79P87 SSRIB	STX	Y	109	AC,P5V,Va
ProHarvest	81P20 PCE	PCE	Y	111	AC,P5V,Va
Purple Ribbon	23A10VT2PRIB	VT2P	Y	110	AC,P2
Purple Ribbon	24P07PCE	PCE	Y	107	CM,C2
Purple Ribbon	24P11PCE	PCE	Y	111	CM,C2
Renk	RK766SSPRO	STXP	Y*	109	AC,P5V,EDC-EL
Renk	RK773TRE	TRE	Y*	109	AC,P2
Renk	RK800VT4PRO	VT4P	N	110	AC,P5V,EDC-EL
Sun Prairie	SP2556	PCE	N	110	F,I,B,NE
Sun Prairie	SPX2409	VT4P	N	107	F,I,B,NE
Wyffels	W6215RIB	TRE	Y*	109	CM,C2,Vi,Va
Wyffels	W6479	STXP	N	110	AC,P5V

Company/Brand	Brand/Product	Technology	RIB	RM	Seed Treat.
Wyffels	W6505	TRE	N	110	AC,P5V
Wyffels	W6886RIB	VT2P	Y*	111	CM,C2,Vi,Va
Wyffels	W7048RIB	STX	Y*	111	CM,C2,Vi,Va

* FIRST does not inspect products for refuge blend. N* indicates the product was entered without a refuge component by the sponsoring seed company. Prior year entries may contain refuge blend.

2024 Corn - Illinois East Central [ILEC]

Full-Season Test Products (45 Total)

Company/Brand	Product/Brand	Technology	RIB	RM	Seed Treat.
Burrus	6N54 VT2P	VT2P	Y	113	AC,P5V,EDC-EL
Burrus	6U77 SSP	STXP	Y	113	AC,P5V,EDC-EL
DeKalb	DKC114-99RIB GC	VT4P	Y	114	AC,P1V
DeKalb	DKC64-22RIB GC	VT2P	Y	114	AC,P5V
FS InVision	FS 6349PC RA	PCE	Y	113	CM,C2,Vi,Va
FS InVision	FS 6432P RIB	STXP	Y	114	AC,P5V
FS InVision	FS 6447T RIB	TRE	Y	114	AC,P5V,EDC-EL
FS InVision	FS 6545V RIB	VT2P	Y	115	AC,P5V
FS InVision	FS 6625V RIB	VT2P	Y	116	AC,P5V
Golden Harvest	G12S75-D	D	Y	112	AVC,C1,Vi,Va
Golden Harvest	G12U11-AA	AA	Y	112	CM,C1,Vi,Va
Golden Harvest	G14B32-DV	DV	Y	114	CM,C5,Vi,Va
Golden Harvest	G15J91-V	V	Y	115	CM,C5,Vi,Va
Great Heart	HT-7341VT2P	VT2P	N	113	F,I
Great Heart	HT-7360VT2P	VT2P	N	113	F,I
Great Heart	HT-7499TRE	TRE	Y	114	F,I
Great Heart	HT-7500TRE	TRE	N	115	F,I
Integra	6274 VT2PRIB	VT2P	Y	112	Treated
Integra	6365SSPRO	STXP	Y	113	Treated
Integra	6493 VT2PRIB	VT2P	Y*	114	Treated
Kitchen	KSC 6114SSRIB GC	STX	Y	114	Treated
LG Seeds	LG63C32SSP	STXP	N	113	AC,P5V
LG Seeds	LG64C43VT2RIB	VT2P	Y*	114	AC,P5V
Martin	SS-427-4 TRE GC	TRE	U	112	AC,P2
NuTech	71A7V	VE	Y	111	LumPro P2
NuTech	72C1PCE	PCE	Y	112	LumPro P2
NuTech	72D4Q	QR	Y	112	LumPro P2
NuTech	73A4AM	AM	Y	113	LumPro P2
NuTech	74A5PCE	PCE	Y	114	LumPro P2
Pioneer	P1185Q CK	QR	Y	111	Lum, L1
Pioneer	P1366Q GC	QR	Y	113	Lum, L1
Pioneer	P1383AM GC	AM	Y	113	Lum, L1
Pioneer	P14830AML GC	AML	Y	114	Lum, L1
ProHarvest	83P48 STAXPRO	STXP	Y	113	AC,P5V,EDC-EL
ProHarvest	83P66 VT2PRIB	VT2P	Y*	113	AC,P5V,Va
ProHarvest	84P78 TRERIB	TRE	Y	114	AC,P5V,Va
ProHarvest	85P58 VT2PRIB	VT2P	Y	115	AC,P5V,Va
Renk	RK825VT4P	VT4P	N	112	AC,P5V,EDC-EL
Renk	RK876VT2P	VT2P	Y*	113	AC,P2
Sun Prairie	SP2887	VT2P	N	115	F,I,B,NE
Wyffels	W7485	TRE	N	112	AC,P5V
Wyffels	W7499	STXP	N	112	AC,P5V

Company/Brand	Brand/Product	Technology	RIB	RM	Seed Treat.
Wyffels	W7759RIB	STXP	Y*	113	CM,C2,Vi,Va
Wyffels	W7945RIB	TRE	Y*	114	CM,C2,Vi,Va
Wyffels	W8086RIB	VT2P	Y*	114	CM,C2,Vi,Va

* FIRST does not inspect products for refuge blend. N* indicates the product was entered without a refuge component by the sponsoring seed company. Prior year entries may contain refuge blend.

Footnotes and Abbreviations Descriptions

Brand Footnotes

CK	Identifies a check product included in early- and full-season tests.
GC	Grower Comparison product included by FIRST when space permits.
^	Innotech™ brand seed is distributed by Rob-See-Co, LLC. Innotech™ is a trademark of Syngenta. Power Plus® brand seed is distributed by Burrus. Power Plus® is a registered trademark of Corteva Agriscience.

Corn Technologies

AA	Agrisure® Above (CB,HX,LL,GT), formerly Agrisure® 3120
AM	Optimum® AcreMax®
AML	Optimum® AcreMax® Leptra® (Vip,YGCB,HX,LL,RR2)
D	Duracade™ (CB,HX,RW,RW2,LL,GT), formerly Agrisure Duracade® 5122
DV	DuracadeViptera™ (Vip,CB,HX,RW,RW2,LL,GT), formerly Agrisure Duracade® 5222
PCE	PowerCore® Enlist®
QR	Qrome®
STX	SmartStax®
STXP	SmartStax® Pro with RNAi Technology
TRE	Trecepta®
V	Viptera™ (Vip,CB,HX,LL,GT), formerly Agrisure Viptera® 3220
VE	Vorceed™ Enlist®
VT2P	VT Double PRO®
VT4P	VT4Pro™ with RNAi Technology

NOTE: The refuge component genetics may vary in a refuge blend seed product.

Corn Seed Treatments*

NA	Not Available
AC,P1V	Acceleron® Poncho 1250/Votivo
AC,P2	Acceleron® 250
AC,P5V	Acceleron® Poncho 500/Votivo
AC,P5V,EDC-EL	Acceleron® ELITE Poncho 500/Votivo with Enhanced Disease Control
AC,P5V,St,SU	Acceleron® Poncho 500/Votivo, Stamina, StepUp
AC,P5V,Va	Acceleron® Poncho 500/Votivo, Vayantis®
AVC,C1,Vi,Va	Avicta® Complete 1250, Vibrance®, Vayantis®
CM,C1,Vi,Va	CruiserMaxx® 1250 with Vibrance, Vayantis®
CM,C2	CruiserMaxx® 250
CM,C2,Vi,Va	CruiserMaxx® 250 with Vibrance, Vayantis®
CM,C5,Vi,Va	CruiserMaxx® 500 with Vibrance, Vayantis®
F,I	Fungicide, Insecticide
F,I,B,NE	Fungicide, Insecticide, Biological, Nematicide
Lum, L1	LumiGEN, Lumisure 1250
LumPro P2	Lumiscend Pro /Lumiflex fungicide, L-2012R bio-fungicide, Lumisure 250/ Lumivia250 insecticide, Lumialza nematicide
Treated	Treated seed, unspecified

* Seed treatments may include unspecified plant health promoting components.