

Test by: M&D Seed Research, LLC Van Buren, IN

## 2024 Corn Grain Top 30 Harvest Report

Indiana North [INNO] WOLCOTT, IN  
Hilltop Swine and Grain, Troy Furrer, White County, IN

<b>Early-Season Test</b>	103 - 108 Day CRM B2024INNO02a
<b>Top 30 of 44</b>	For Gross Income (Sorted by Yield) Average of (4) Replications
<b>PREV. CROP/HERB:</b>	Soybeans / Prefix, Dual, Liberty
<b>SOIL DESCRIPTION:</b>	Wolcott clay loam, mod. poorly drained, non-irrigated
<b>SOIL CONDITION:</b>	Strip-Till, low P, low K, 5.8 pH, 3.7% OM, 19.3 CEC
<b>PEST MANAGEMENT:</b>	Trivolt, Atrazine, Roundup, Diflexx
<b>FERTILITY - Applied N:</b>	120 Fall, 100 Sidedress
<b>Applied N-P-K (units):</b>	220-0-0
<b>SEEDED - RATE - ROW:</b>	May 2 33.6 /A 30" spacing
<b>HARVESTED - STAND:</b>	Oct 1 33.3 /A

### TEST COMMENTS:

*This is a strip till location that has very uniform soils and excellent fertility. The site was planted at the beginning of May with good early growing conditions to give it a great start. The location had below average for summer rains but had good moisture available during pollinating. Plants were very healthy at harvest with very little lodging seen and excellent grain quality.*

Company/Brand	Product/Brand	Technol.†	RM	Yield Bu/A ↓	Moisture %	Lodging %	Stand (x 1000)	Gross Income \$/Acre	Rank
Ebberts	7557PC ↗	PCE	107	<b>240.6</b>	18.8	1	33.2	902	1
Wyckoff	2632 SS RIB ↗	STX	108	<b>240.3</b>	19.6	1	33.2	893	4
Wyckoff	2487 PCE ↗	PCE	106	<b>238.5</b>	19.1	1	33.2	891	5
Dairyland	DS-4533PCE ↗	PCE	105	<b>238.5</b>	19.2	1	33.5	891	6
Augusta	A2254 ↗	PCE	104	235.8	19.3	1	32.8	879	8
Wyffels	W3579RIB ↗	STXP	105	235.5	17.1	1	33.2	899	2
Integra	5802 VT2PRIB ↗	VT2P	108	235.2	18.2	1	33.5	887	7
FS InVision	FS 5525VDG RIB ↗	VT2PDG	105	234.4	17.1	1	33.5	895	3
Augusta	A2357 ↗	V	107	233.6	19.9	1	33.5	865	14
M & W Seeds	MW D108 PWR ↗	PCE	108	233.3	20.3	1	33.5	860	17
Partners Brand	PB 7928-VT2PRIB GC ↗	VT2P	109	233.3	19.7	1	32.8	866	12
Ebberts	7188PC ↗	PC	108	232.8	19.8	1	33.2	863	15
Dyna-Gro	D44PN25RA ↗	PCE	104	231.9	18.8	1	33.2	870	9
FS InVision	FS 5845P RIB ↗	STXP	108	231.2	18.4	1	33.2	870	10
Channel	205-08TRECRIB ↗	TRE	105	231.2	18.7	1	33.2	867	11
Golden Harvest	G08U00-V ↗	V	108	229.9	19.9	1	33.5	851	20
Integra	5443 DGVT2PRIB ↗	VT2PDG	104	228.3	17.7	1	33.5	866	13
Channel	208-62VT2PRIB ↗	VT2P	108	228.1	18.6	1	33.5	857	18
Wyffels	W3309RIB ↗	STXP	103	227.2	17.7	1	33.5	861	16
Wyffels	W5406RIB ↗	VT2P	108	226.9	19.5	1	33.5	845	22
Purple Ribbon	24P07PCE ↗	PCE	107	226.9	20.2	1	33.5	838	27
Dairyland	DS-4488PCE ↗	PCE	104	226.5	18.1	1	33.5	855	19
FS InVision	FS 5835V RIB ↗	VT2P	108	226.0	18.7	1	32.8	848	21
Channel	207-87VT2PRIB ↗	VT2P	107	225.5	18.8	1	33.5	845	23
M & W Seeds	MW C104 PWR ↗	PCE	104	225.2	18.7	1	33.5	845	24
Augusta	A2057-3110 ↗	3110	107	224.6	19.2	1	33.5	838	28
Wyckoff	2583 TRE RIB ↗	TRE	108	224.0	19.2	1	33.2	836	29
Channel	204-54TRECRIB ↗	TRE	104	223.5	18.0	1	33.5	845	25
FS InVision	FS 5335P RIB ↗	STXP	103	221.9	17.5	2	33.5	843	26
Dairyland	DS-4833AM ↗	AM	108	220.4	18.0	1	33.2	833	30
PIONEER	P0720AM CK	AM	107	222.5	19.2	1	33.5	830	32
				<b>Averages =</b>	<b>225.5</b>	<b>18.8</b>	<b>1</b>	<b>33.3</b>	<b>844</b>
				<b>LSD (0.10) =</b>	12.6	0.7	ns		
				<b>LSD (0.25) =</b>	6.6	0.3	ns		
				<b>C.V. =</b>	6.1				
				Historic yield: 213.86 bu/a, 19 yr(s)					

Matt Turner

mattturner1979@yahoo.com, (317) 606-9040

**Yield & Income Factors:** Base Moisture = 15.0% Shrink = 1.3 Drying = \$0.04 Prices: GMO = \$3.90; non-GMO = \$3.90

Report Date: 10/02/2024

† See last page for abbreviation descriptions. Dark colored row identifies the check product found in early- and full-season tests. **Bold** yields are significantly above test average by LSD(0.10). **Italicized** brands exceed the grain moisture limit for this test. **ns** = column values not significantly different. ↗ Links to full product yield results at www.firstseedtests.com

©2024, All rights reserved to Farmers' Independent Research of Seed Technologies, LLC.

Additional reports available at [www.firstseedtests.com](http://www.firstseedtests.com)

Test by: M&D Seed Research, LLC Van Buren, IN

## 2024 Corn Grain Top 30 Harvest Report

Indiana North [INNO] WOLCOTT, IN  
Hilltop Swine and Grain, Troy Furrer, White County, IN

<b>Full-Season Test</b>	109 - 112 Day CRM B2024INNO02b
<b>Top 30 of 48</b>	For Gross Income (Sorted by Yield) Average of (4) Replications
<b>PREV. CROP/HERB:</b>	Soybeans / Prefix, Dual, Liberty
<b>SOIL DESCRIPTION:</b>	Wolcott clay loam, mod. poorly drained, non-irrigated
<b>SOIL CONDITION:</b>	Strip-Till, low P, low K, 5.8 pH, 3.7% OM, 19.3 CEC
<b>PEST MANAGEMENT:</b>	Trivolt, Atrazine, Roundup, Diflexx
<b>FERTILITY - Applied N:</b>	120 Fall, 100 Sidedress
<b>Applied N-P-K (units):</b>	220-0-0
<b>SEEDED - RATE - ROW:</b>	May 2 33.6 /A 30" spacing
<b>HARVESTED - STAND:</b>	Oct 1 33.4 /A

### TEST COMMENTS:

*This is a strip till location that has very uniform soils and excellent fertility. The site was planted at the beginning of May with good early growing conditions to give it a great start. The location had below average for summer rains but had good moisture available during pollinating. Plants were very healthy at harvest with very little lodging seen and excellent grain quality.*

Company/Brand	Product/Brand	Technol.†	RM	Yield Bu/A ↓	Moisture %	Lodging %	Stand (x 1000)	Gross Income \$/Acre	Rank
Wyffels	W6215RIB ↗	TRE	109	<b>253.3</b>	19.4	1	33.5	944	1
Wyckoff	2676 TRE RIB ↗	TRE	112	<b>247.8</b>	20.9	1	33.5	908	4
Dairyland	DS-4969PCE ↗	PCE	109	<b>246.5</b>	19.6	1	32.8	916	2
Integra	6274 VT2PRIB ↗	VT2P	112	<b>245.3</b>	21.3	1	33.2	895	7
Channel	211-11VT2PRIB ↗	VT2P	111	<b>245.3</b>	21.4	1	33.5	894	9
Ebberts	7660PC ↗	PCE	110	<b>245.0</b>	21.2	1	33.2	895	8
Ebberts	6883DGVT2P RIB ↗	VT2PDG	112	<b>244.1</b>	21.5	1	33.5	889	11
Wyckoff	2667 DG VT2P RIB ↗	VT2PDG	111	<b>243.9</b>	21.0	1	33.5	892	10
Wyffels	W6505 ↗	TRE	110	<b>243.1</b>	19.9	1	33.5	901	6
FS InVision	FS 6248V RIB ↗	VT2P	112	<b>243.1</b>	19.5	1	33.5	905	5
FS InVision	FS 5949PC RA ↗	PCE	109	242.7	18.8	1	32.8	910	3
NK Brand	NK1228-AA ↗	AA	112	242.5	22.4	1	33.5	874	17
FS InVision	FS 6245V RIB ↗	VT2P	112	241.7	21.1	1	33.5	883	12
Wyckoff	2679 DG VT2P RIB ↗	VT2PDG	112	240.5	21.8	1	33.5	873	19
FS InVision	FS 6137PC RA ↗	PCE	111	238.9	21.1	1	33.5	874	18
Wyckoff	2685 TRE RIB ↗	TRE	112	238.7	21.4	1	32.8	870	22
Purple Ribbon	23A10VT2PRIB ↗	VT2P	110	238.6	20.6	1	33.5	877	15
Great Heart	HT-7195TRE ↗	TRE	111	238.5	20.1	1	33.5	881	13
Golden Harvest	G12U11-AA ↗	AA	112	238.0	21.5	1	33.5	867	23
ProHarvest	81P20 PCE ↗	PCE	111	237.9	20.8	1	33.5	872	20
Great Heart	HT-6950PCE ↗	PCE	109	236.4	19.6	1	32.8	878	14
ProHarvest	80P75 PCE ↗	PCE	110	235.0	19.3	1	33.5	876	16
Augusta	A2061-PWE ↗	PCE	111	232.5	20.9	1	33.2	852	27
Augusta	A2160 ↗	PCE	110	232.4	19.7	1	33.5	862	25
Golden Harvest	G12S75-D ↗	D	112	232.0	22.0	1	33.5	840	30
Channel	211-70TRECRIB ↗	TRE	111	231.1	19.7	1	33.5	858	26
Augusta	A2060 ↗	PCE	110	230.3	18.6	1	33.5	865	24
Wyffels	W6886RIB ↗	VT2P	111	229.8	21.4	1	33.5	837	31
Golden Harvest	G11V76-AA ↗	AA	111	229.2	20.3	1	33.5	845	28
Great Heart	HT-7272PCE ↗	PCE	112	226.0	19.2	1	33.5	843	29
PIONEER	P0720AM CK	AM	107	232.1	18.6	1	33.5	872	21
				<b>Averages =</b>	<b>231.6</b>	<b>20.3</b>	<b>1</b>	<b>33.4</b>	<b>854</b>
				<b>LSD (0.10) =</b>	11.4	0.7	0		
				<b>LSD (0.25) =</b>	6.0	0.4	0		
				<b>C.V. =</b>	5.4				
				Historic yield: 213.86 bu/a, 19 yr(s)					

Matt Turner

mattturner1979@yahoo.com, (317) 606-9040

**Yield & Income Factors:** Base Moisture = 15.0% Shrink = 1.3 Drying = \$0.04 Prices: GMO = \$3.90; non-GMO = \$3.90

Report Date: 10/02/2024

† See last page for abbreviation descriptions. Dark colored row identifies the check product found in early- and full-season tests. **Bold** yields are significantly above test average by LSD(0.10). **Italicized** brands exceed the grain moisture limit for this test. **ns** = column values not significantly different. ↗ Links to full product yield results at [www.firstseedtests.com](http://www.firstseedtests.com)

©2024, All rights reserved to Farmers' Independent Research of Seed Technologies, LLC.

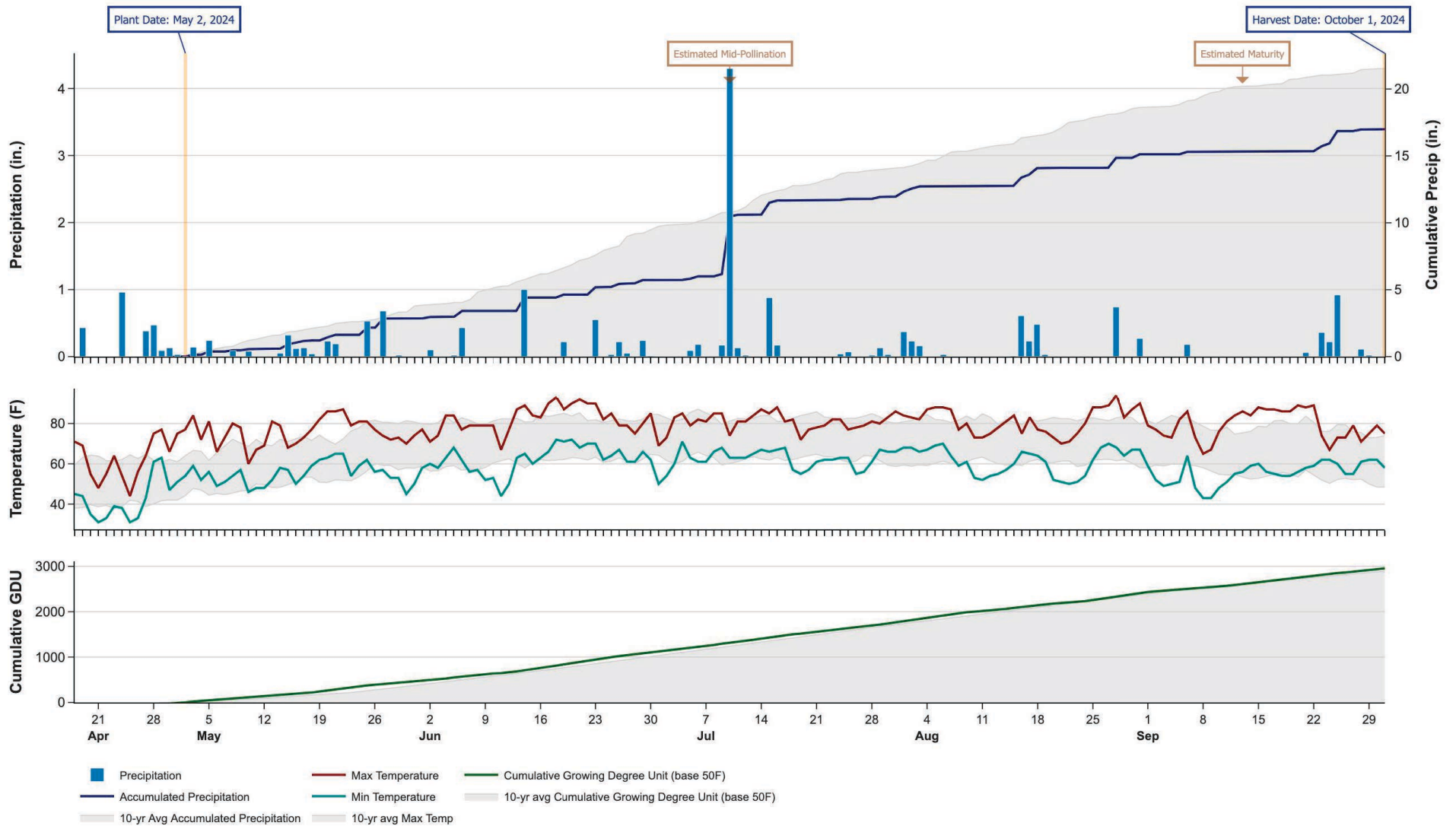
Additional reports available at [www.firstseedtests.com](http://www.firstseedtests.com)

# 2024 Corn - Indiana North [ INNO ]

## Weather Conditions Summary at WOLCOTT, IN

Weather Data Retrieved: 10/02/2024

Monthly Total	Apr*	May	Jun	Jul	Aug	Sep	Oct*	Total
Precip (in)   (Diff)	2.5   1.4 (+1.0)	2.9   4.1 (-1.2)	2.9   5.7 (-2.8)	6.2   4.6 (+1.6)	3.2   4.5 (-1.4)	1.9   2.9 (-1.0)	0.0   0.0 (0.0)	19.5   23.3 (-3.8)
GDU   Avg (Diff)	80   70 (+9)	482   385 (+96)	652   637 (+14)	662   702 (-40)	648   661 (-13)	522   505 (+16)	16   12 (+4)	3062   2975 (+86)



\* First monthly total starts on the date 14 days prior to planting and final monthly total ends on the harvest date.

Note: Weather information from PRISM Climate Group. Data may be revised by the provider after retrieval. FIRST will not revise or update reports to reflect any weather data changes. For information purposes only.

## 2024 Corn - Indiana North [ INNO ]

### Early-Season Test Products (44 Total)

Company/Brand	Product/Brand	Technology	RIB	RM	Seed Treat.
Augusta	A2057-3110	3110	Y*	107	CM,C2
Augusta	A2254	PCE	N	104	AC,P5V
Augusta	A2257	PCE	N	107	AC,P5V
Augusta	A2357	V	N	107	CM,C2
Channel	204-54TRECRIB	TRE	Y	104	AC,P5V,EDC-EL
Channel	205-08TRECRIB	TRE	Y	105	AC,P5V,EDC-EL
Channel	207-87VT2PRIB	VT2P	Y	107	AC,P5V,EDC-B
Channel	208-62VT2PRIB	VT2P	Y	108	AC,P5V,EDC-B
Dairyland	DS-4488PCE	PCE	Y	104	Lum, L1
Dairyland	DS-4533PCE	PCE	Y	105	Lum, L1
Dairyland	DS-4833AM	AM	Y	108	Lum
Dyna-Gro	D44PN25RA	PCE	Y	104	AC,P5V
Ebberts	7188PC	PC	Y*	108	Ebberts
Ebberts	7209TR RIB	TRE	Y	108	Ebberts
Ebberts	7557PC	PCE	Y	107	Ebberts
Ebberts	9779SSX RIB	STX	Y	108	Ebberts
FS InVision	FS 5335P RIB	STXP	Y	103	AC,P5V
FS InVision	FS 5525VDG RIB	VT2PDG	Y	105	AC,P5V
FS InVision	FS 5835V RIB	VT2P	Y	108	AC,P5V
FS InVision	FS 5845P RIB	STXP	Y	108	AC,P5V
Golden Harvest	G03U08-D	D	Y	103	CM,C1,Vi,Va
Golden Harvest	G08U00-V	V	Y	108	CM,C1,Vi,Va
Integra	5443 DGVT2PRIB	VT2PDG	N	104	AC,P5V,St,SU
Integra	5584 PCE	PCE	Y*	105	AC,P5V,St,SU
Integra	5775 VT2PRIB	VT2P	Y	107	AC,P5V,St,SU
Integra	5802 VT2PRIB	VT2P	Y	108	AC,P5V,St,SU
M & W Seeds	MW 103A VT2P	VT2P	Y	103	Treated
M & W Seeds	MW C104 PWR	PCE	Y	104	Treated
M & W Seeds	MW D108 PWR	PCE	Y	108	Treated
NK Brand	NK0367-AA	AA	Y	103	CM,C5,Vi,Va
NK Brand	NK0880-V	V	Y	108	CM,C1,Vi,Va
Partners Brand	PB 7928-VT2PRIB GC	VT2P	Y	109	AL2500
Pioneer	P0306AM GC	AM,AQ	Y	103	Lum
Pioneer	P0720AM CK	AM	Y	107	Lum, L1
Purple Ribbon	24P07PCE	PCE	Y	107	CM,C2
Wyckoff	2487 PCE	PCE	Y	106	CM,C2,Vi,Va
Wyckoff	2515 VT2P RIB	VT2P	Y	107	AC,P2
Wyckoff	2574 TRE RIB	TRE	Y	108	AC,P2
Wyckoff	2583 TRE RIB	TRE	Y	108	AC,P2
Wyckoff	2632 SS RIB	STX	Y	108	AC,P5V
Wyffels	W3309RIB	STXP	Y*	103	CM,C2,Vi,Va
Wyffels	W3579RIB	STXP	Y*	105	CM,C2,Vi,Va

Company/Brand	Brand/Product	Technology	RIB	RM	Seed Treat.
Wyffels	W4439RIB	STXP	Y	106	CM,C2,Vi,Va
Wyffels	W5406RIB	VT2P	Y*	108	CM,C2,Vi,Va

\* FIRST does not inspect products for refuge blend. N\* indicates the product was entered without a refuge component by the sponsoring seed company. Prior year entries may contain refuge blend.

## 2024 Corn - Indiana North [ INNO ]

### Full-Season Test Products (48 Total)

Company/Brand	Product/Brand	Technology	RIB	RM	Seed Treat.
Augusta	A1259-DV	DV	Y*	109	CM,C2
Augusta	A2060	PCE	N*	110	CM,C2
Augusta	A2061-PWE	PCE	N	111	CM,C2
Augusta	A2160	PCE	N	110	CM,C2
Augusta	A4961-V	V	N	111	CM,C2
Channel	209-25SSPRIB	STXP	Y	109	AC,P5V,EDC-B
Channel	210-08VT2PRIB	VT2P	Y	110	AC,P5V,EDC-B
Channel	211-11VT2PRIB	VT2P	Y*	111	AC,P5V,EDC-B
Channel	211-70TRECRIB	TRE	Y	111	AC,P5V,EDC-B
Dairyland	DS-4969PCE	PCE	Y	109	Lum, L1
Dairyland	DS-5128PCE	PCE	Y	111	Lum, L1
Ebberts	6883DGV2P RIB	VT2PDG	Y	112	Ebberts
Ebberts	7442PC	PCE	Y	112	Ebberts
Ebberts	7660PC	PCE	Y	110	Ebberts
Ebberts	7993PC	PCE	Y	112	Ebberts
FS InVision	FS 5949PC RA	PCE	Y	109	AC,P5V
FS InVision	FS 6017V RIB	VT2P	Y	110	AC,P5V
FS InVision	FS 6137PC RA	PCE	N	111	AC,P5V
FS InVision	FS 6245V RIB	VT2P	Y	112	AC,P5V,EDC-EL
FS InVision	FS 6248V RIB	VT2P	Y	112	CM,C5,Vi
Golden Harvest	G10L16-DV	DV	Y	110	AVC,C1,Vi,Va
Golden Harvest	G11V76-AA	AA	Y	111	AVC,C1,Vi,Va
Golden Harvest	G12S75-D	D	Y	112	AVC,C1,Vi,Va
Golden Harvest	G12U11-AA	AA	Y	112	CM,C1,Vi,Va
Great Heart	HT-6950PCE	PCE	N	109	F,I
Great Heart	HT-7195TRE	TRE	N	111	F,I
Great Heart	HT-7272PCE	PCE	N	112	F,I
Integra	5935PCE	PCE	Y	109	AC,P5V,St,SU
Integra	6061 SSRIB	STX	Y	110	AC,P5V,St,SU
Integra	6274 VT2PRIB	VT2P	Y	112	NA
NK Brand	NK1056-V	V	Y	110	CM,C2,Vi,Va
NK Brand	NK1188-AA	AA	Y	111	CM,C5,Vi,Va
NK Brand	NK1228-AA	AA	Y	112	CM,C1,Vi,Va
Pioneer	P0720AM CK	AM	Y	107	Lum, L1
ProHarvest	80P75 PCE	PCE	Y	110	AC,P5V,Va
ProHarvest	81P20 PCE	PCE	Y	111	AC,P5V,Va
Purple Ribbon	23A10VT2PRIB	VT2P	Y	110	AC,P2
Purple Ribbon	24P11PCE	PCE	Y	111	CM,C2
Wyckoff	2667 DG VT2P RIB	VT2PDG	Y	111	AC,P2
Wyckoff	2676 TRE RIB	TRE	Y*	112	AC,P2
Wyckoff	2679 DG VT2P RIB	VT2PDG	Y	112	AC,P2
Wyckoff	2685 TRE RIB	TRE	Y	112	AC,P2

Company/Brand	Brand/Product	Technology	RIB	RM	Seed Treat.
Wyckoff	2688 PCE	PCE	Y	112	CM,C2,Vi,Va
Wyffels	W6215RIB	TRE	Y*	109	AC,P5V
Wyffels	W6479	STXP	N	110	AC,P5V
Wyffels	W6505	TRE	N	110	AC,P5V
Wyffels	W6886RIB	VT2P	Y*	111	CM,C2,Vi,Va
Wyffels	W7048RIB	STX	Y*	111	CM,C2,Vi,Va

\* FIRST does not inspect products for refuge blend. N\* indicates the product was entered without a refuge component by the sponsoring seed company. Prior year entries may contain refuge blend.

## Footnotes and Abbreviations Descriptions

### Brand Footnotes

---

CK	Identifies a check product included in early- and full-season tests.
GC	Grower Comparison product included by FIRST when space permits.
^	Innotech™ brand seed is distributed by Rob-See-Co, LLC. Innotech™ is a trademark of Syngenta. Power Plus® brand seed is distributed by Burrus. Power Plus® is a registered trademark of Corteva Agriscience.

### Corn Technologies

---

3110	Agrisure® Viptera® 3110 (Vip, CB,LL,GT)
AA	Agrisure® Above (CB,HX,LL,GT), formerly Agrisure® 3120
AM	Optimum® AcreMax®
AQ	Optimum® AQUAmax®
D	Duracade™ (CB,HX,RW,RW2,LL,GT), formerly Agrisure Duracade® 5122
DV	DuracadeViptera™ (Vip,CB,HX,RW,RW2,LL,GT), formerly Agrisure Duracade® 5222
PC	PowerCore®
PCE	PowerCore® Enlist®
STX	SmartStax®
STXP	SmartStax® Pro with RNAi Technology
TRE	Trecepta®
V	Viptera™ (Vip,CB,HX,LL,GT), formerly Agrisure Viptera® 3220
VT2P	VT Double PRO®
VT2PDG	DroughtGard® with VT Double PRO®

---

NOTE: The refuge component genetics may vary in a refuge blend seed product.

## Corn Seed Treatments\*

---

NA	Not Available
AC,P2	Acceleron® 250
AC,P5V	Acceleron® Poncho 500/Votivo
AC,P5V,EDC-B	Acceleron® BASIC Poncho 500/Votivo with Enhanced Disease Control
AC,P5V,EDC-EL	Acceleron® ELITE Poncho 500/Votivo with Enhanced Disease Control
AC,P5V,St,SU	Acceleron® Poncho 500/Votivo, Stamina, StepUp
AC,P5V,Va	Acceleron® Poncho 500/Votivo, Vayantis®
AL2500	Alert 2500, Surefire
AVC,C1,Vi,Va	Avicta® Complete 1250, Vibrance®, Vayantis®
CM,C1,Vi,Va	CruiserMaxx® 1250 with Vibrance, Vayantis®
CM,C2	CruiserMaxx® 250
CM,C2,Vi,Va	CruiserMaxx® 250 with Vibrance, Vayantis®
CM,C5,Vi	CruiserMaxx® 500 with Vibrance
CM,C5,Vi,Va	CruiserMaxx® 500 with Vibrance, Vayantis®
Ebberts	Ebberts Complete Corn (Ebberts Field Seeds)
F,I	Fungicide, Insecticide
Lum	LumiGEN™ (Corteva Agriscience)
Lum, L1	LumiGEN, Lumisure 1250
Treated	Treated seed, unspecified

---

\* Seed treatments may include unspecified plant health promoting components.