

Test by: M&D Seed Research, LLC Van Buren, IN

2024 Corn Grain Top 30 Harvest Report

Indiana North [INNO] VALPARAISO, IN
Matt Goetz, Porter County, IN

Early-Season Test	103 - 108 Day CRM B2024INNO03a
Top 30 of 44	For Gross Income (Sorted by Yield) Average of (4) Replications
PREV. CROP/HERB:	Soybeans / Authority, Round Up
SOIL DESCRIPTION:	Sebewa loam, poorly drained, non-irrigated
SOIL CONDITION:	No-Till, medium P, very high K, 5.7 pH, 3.4% OM, 12.4 CEC
PEST MANAGEMENT:	Balance Flex, Raptor, Round Up, Zolera Fungicide, Status
FERTILITY - Applied N:	140 Spring, 20 Planter, 60 Sidedress
Applied N-P-K (units):	220-0-90
SEEDED - RATE - ROW:	May 23 33.6 /A 30" spacing
HARVESTED - STAND:	Oct 28 33.2 /A

TEST COMMENTS:

A very uniform, dryland site that was planted a bit later than usual for the area due to wet weather earlier in the month. Good growing conditions early in the season helped the plot get established. It was a bit drier later in the season but it always seemed to get a rain when needed. Healthy and standing well at harvest with good seed quality.

Company/Brand	Product/Brand	Technol.†	RM	Yield Bu/A ↓	Moisture %	Lodging %	Stand (x 1000)	Gross Income \$/Acre	Rank
Dairyland	DS-4533PCE ↗	PCE	105	283.0	17.3	1	33.0	993	1
Channel	204-54TRECRIB ↗	TRE	104	267.9	16.8	1	33.5	945	2
M & W Seeds	MW C104 PWR ↗	PCE	104	263.8	17.0	1	33.5	929	3
Ebberts	7557PC ↗	PCE	107	261.5	18.0	1	32.1	911	4
Ebberts	9779SSX RIB ↗	STX	108	260.4	19.0	1	33.2	896	6
Partners Brand	PB 7928-VT2PRIB GC ↗	VT2P	109	254.7	17.8	1	33.5	888	7
Integra	5443 DGVT2PRIB ↗	VT2PDG	104	253.5	16.2	1	33.5	901	5
Wyckoff	2574 TRE RIB ↗	TRE	108	253.3	19.1	1	33.2	870	17
Wyckoff	2487 PCE ↗	PCE	106	253.0	17.4	1	33.2	887	8
Channel	205-08TRECRIB ↗	TRE	105	252.2	17.2	1	33.2	885	10
Wyckoff	2583 TRE RIB ↗	TRE	108	251.2	17.5	1	33.5	879	13
Dairyland	DS-4488PCE ↗	PCE	104	250.6	16.5	1	33.5	887	9
FS InVision	FS 5835V RIB ↗	VT2P	108	250.1	17.9	1	33.5	872	16
Wyffels	W3309RIB ↗	STXP	103	249.4	16.6	1	33.5	882	12
Wyckoff	2515 VT2P RIB ↗	VT2P	107	248.1	16.8	1	33.5	875	14
Dyna-Gro	D44PN25RA ↗	PCE	104	248.0	18.1	1	32.4	862	21
Dairyland	DS-4833AM ↗	AM	108	247.9	17.4	1	33.5	869	18
Wyffels	W5406RIB ↗	VT2P	108	247.5	18.2	1	33.5	859	24
M & W Seeds	MW D108 PWR ↗	PCE	108	247.1	19.4	1	33.5	846	28
M & W Seeds	MW 103A VT2P ↗	VT2P	103	246.0	16.1	1	32.8	875	15
Augusta	A2057-3110 ↗	3110	107	245.6	17.0	1	32.5	865	19
Ebberts	7209TR RIB ↗	TRE	108	243.9	17.3	1	33.5	856	25
Integra	5802 VT2PRIB ↗	VT2P	108	243.8	17.3	1	33.2	855	26
Integra	5775 VT2PRIB ↗	VT2P	107	243.4	16.4	1	33.5	862	22
Augusta	A2254 ↗	PCE	104	243.0	16.4	1	33.5	861	23
FS InVision	FS 5335P RIB ↗	STXP	103	242.0	15.8	1	31.8	863	20
FS InVision	FS 5525VDG RIB ↗	VT2PDG	105	239.5	15.8	1	33.2	854	27
Pioneer	P0306AM GC ↗	AM,AQ	103	238.4	17.4	1	33.5	835	30
Channel	208-62VT2PRIB ↗	VT2P	108	238.0	16.2	1	33.5	846	29
Golden Harvest	G03U08-D ↗	D	103	236.9	16.9	1	33.5	835	31
PIONEER	P0720AM CK	AM	107	253.8	18.0	1	33.5	883	11
				Averages =	244.1	17.2	1	33.2	857
				LSD (0.10) =	12.5	0.8	ns		
				LSD (0.25) =	6.5	0.4	ns		
				C.V. =	5.6				

Matt Turner

mattturner1979@yahoo.com, (317) 606-9040

Historic yield: 211.06 bu/a, 7 yr(s)

Yield & Income Factors: Base Moisture = 15.0% Shrink = 1.3 Drying = \$0.04 Prices: GMO = \$3.60; non-GMO = \$3.60

Report Date: 10/29/2024

† See last page for abbreviation descriptions. Dark colored row identifies the check product found in early- and full-season tests. **Bold** yields are significantly above test average by LSD(0.10). **Italicized** brands exceed the grain moisture limit for this test. **ns** = column values not significantly different. ↗ Links to full product yield results at www.firstseedtests.com

©2024, All rights reserved to Farmers' Independent Research of Seed Technologies, LLC.

Additional reports available at www.firstseedtests.com

Test by: M&D Seed Research, LLC Van Buren, IN

2024 Corn Grain Top 30 Harvest Report

Indiana North [INNO] VALPARAISO, IN
Wyckoff Hybrids, Inc., Matt Goetz, Porter County, IN

Full-Season Test	109 - 112 Day CRM B2024INNO03b
Top 30 of 48	For Gross Income (Sorted by Yield) Average of (4) Replications
PREV. CROP/HERB:	Soybeans / Authority, Round Up
SOIL DESCRIPTION:	Sebewa loam, poorly drained, non-irrigated
SOIL CONDITION:	No-Till, medium P, very high K, 5.7 pH, 3.4% OM, 12.4 CEC
PEST MANAGEMENT:	Balance Flex, Raptor, Round Up, Zolera Fungicide, Status
FERTILITY - Applied N:	140 Spring, 20 Planter, 60 Sidedress
Applied N-P-K (units):	220-0-90
SEEDED - RATE - ROW:	May 23 33.6 /A 30" spacing
HARVESTED - STAND:	Oct 28 33.3 /A

TEST COMMENTS:

A very uniform, dryland site that was planted a bit later than usual for the area due to wet weather earlier in the month. Good growing conditions early in the season helped the plot get established. It was a bit drier later in the season but it always seemed to get a rain when needed. Healthy and standing well at harvest with good seed quality.

Company/Brand	Product/Brand	Technol.†	RM	Yield Bu/A ↓	Moisture %	Lodging %	Stand (x 1000)	Gross Income \$/Acre	Rank
Ebberts	7660PC ↗	PCE	110	270.7	19.3	1	33.5	928	2
Golden Harvest	G12U11-AA ↗	AA	112	269.1	21.8	1	32.1	895	6
Wyffels	W6215RIB ↗	TRE	109	268.1	18.6	1	33.5	927	3
Augusta	A2160 ↗	PCE	110	267.9	18.3	1	33.2	929	1
FS InVision	FS 6245V RIB ↗	VT2P	112	265.1	21.8	1	33.2	883	9
FS InVision	FS 6017V RIB ↗	VT2P	110	262.9	19.5	1	33.5	899	5
Dairyland	DS-4969PCE ↗	PCE	109	262.5	17.6	1	33.5	918	4
Great Heart	HT-7195TRE ↗	TRE	111	261.9	20.3	1	33.5	888	8
Wyckoff	2688 PCE ↗	PCE	112	260.7	20.5	1	33.0	881	10
Ebberts	6883DGV2P RIB ↗	VT2PDG	112	259.7	20.4	1	33.5	879	11
Wyffels	W6505 ↗	TRE	110	257.4	20.1	1	32.5	874	12
Wyckoff	2685 TRE RIB ↗	TRE	112	257.0	21.7	1	32.5	856	18
Channel	211-70TRECRIB ↗	TRE	111	256.3	20.2	1	33.5	869	14
Wyckoff	2679 DG VT2P RIB ↗	VT2PDG	112	254.7	21.0	1	33.2	856	19
Wyckoff	2676 TRE RIB ↗	TRE	112	254.2	20.7	1	33.5	857	17
Golden Harvest	G12S75-D ↗	D	112	254.1	21.1	1	33.5	852	20
NK Brand	NK1188-AA ↗	AA	111	253.6	20.0	1	33.2	862	15
Purple Ribbon	24P11PCE ↗	PCE	111	252.9	21.0	1	33.2	849	25
Golden Harvest	G11V76-AA ↗	AA	111	252.1	20.7	1	33.5	850	23
Wyffels	W7048RIB ↗	STX	111	251.7	21.8	1	33.5	838	29
Augusta	A2060 ↗	PCE	110	250.5	17.9	1	33.5	873	13
Augusta	A2061-PWE ↗	PCE	111	250.0	20.0	1	32.8	850	24
NK Brand	NK1056-V ↗	V	110	249.4	21.1	1	33.5	837	31
FS InVision	FS 6137PC RA ↗	PCE	111	248.5	19.3	1	33.5	852	21
Channel	210-08VT2PRIB ↗	VT2P	110	248.5	19.4	1	33.5	851	22
Great Heart	HT-6950PCE ↗	PCE	109	246.4	19.7	1	33.5	840	28
Purple Ribbon	23A10VT2PRIB ↗	VT2P	110	246.1	19.9	1	33.5	838	30
ProHarvest	80P75 PCE ↗	PCE	110	245.5	18.8	1	33.5	847	26
Integra	5935PCE ↗	PCE	109	244.2	17.0	1	33.5	860	16
Channel	209-25SSPRIB ↗	STXP	109	243.9	18.3	1	33.5	846	27
PIONEER	P0720AM CK	AM	107	260.0	19.1	1	32.1	893	7
				Averages =	248.5	20.0	1	33.3	844
				LSD (0.10) =	15.9	0.8	ns		
				LSD (0.25) =	8.4	0.4	ns		
				C.V. =	7.0				
				Historic yield: 211.06 bu/a, 7 yr(s)					

Matt Turner

mattturner1979@yahoo.com, (317) 606-9040

Yield & Income Factors: Base Moisture = 15.0% Shrink = 1.3 Drying = \$0.04 Prices: GMO = \$3.60; non-GMO = \$3.60

Report Date: 10/29/2024

† See last page for abbreviation descriptions. Dark colored row identifies the check product found in early- and full-season tests. **Bold** yields are significantly above test average by LSD(0.10). **Italicized** brands exceed the grain moisture limit for this test. **ns** = column values not significantly different. ↗ Links to full product yield results at www.firstseedtests.com

©2024, All rights reserved to Farmers' Independent Research of Seed Technologies, LLC.

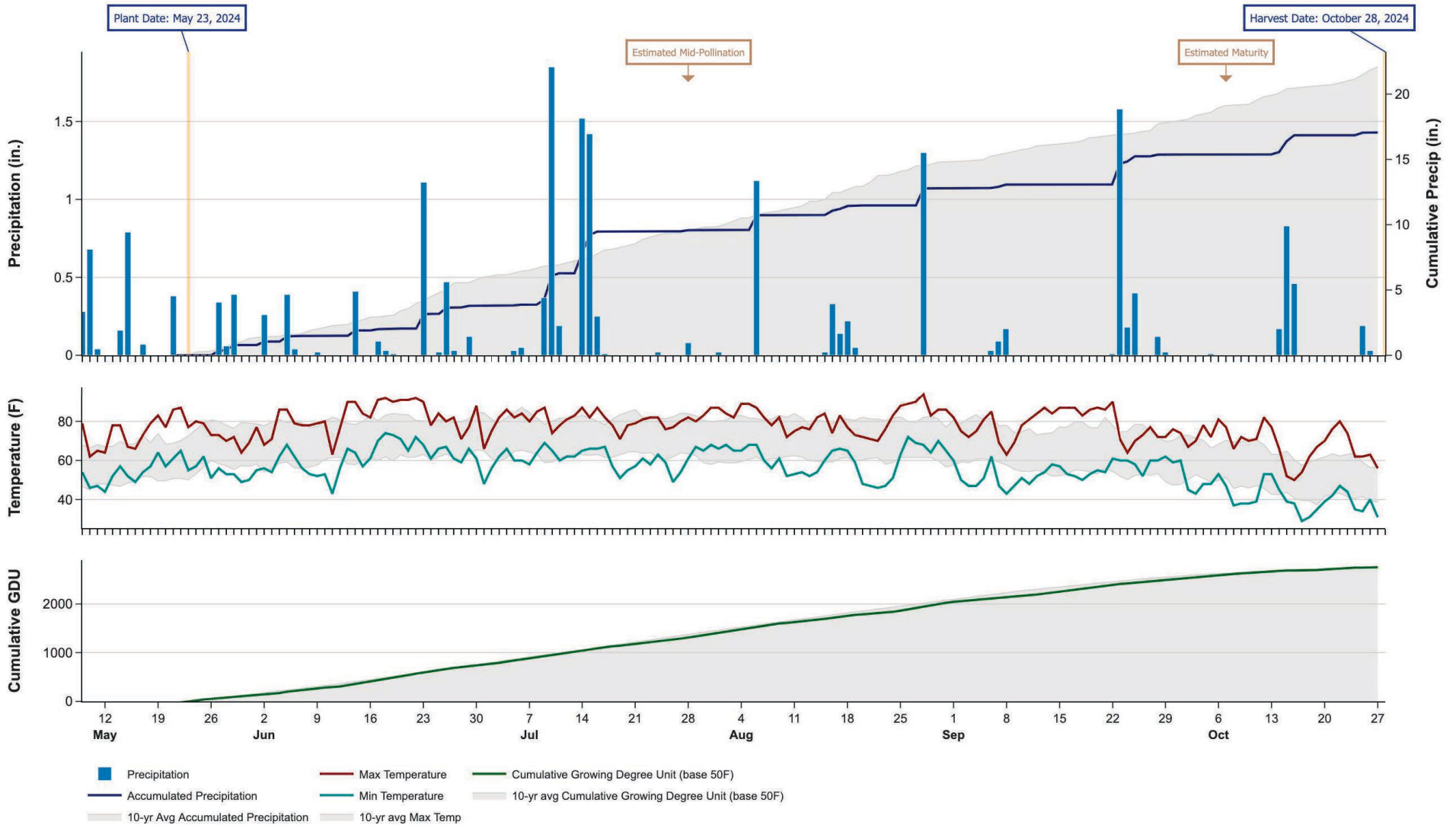
Additional reports available at www.firstseedtests.com

2024 Corn - Indiana North [INNO]

Weather Conditions Summary at VALPARAISO, IN

Weather Data Retrieved: 10/29/2024

Monthly Total	May*	Jun	Jul	Aug	Sep	Oct*	Total
Precip (in) (Diff)	3.2 3.9 (-0.7)	3.0 4.5 (-1.5)	5.8 4.0 (+1.8)	3.2 5.0 (-1.8)	2.6 3.1 (-0.5)	1.7 4.2 (-2.5)	19.5 24.7 (-5.2)
GDU Avg (Diff)	330 288 (+41)	640 608 (+31)	638 689 (-51)	638 643 (-5)	494 477 (+16)	236 185 (+50)	2976 2893 (+82)



* First monthly total starts on the date 14 days prior to planting and final monthly total ends on the harvest date.

Note: Weather information from PRISM Climate Group. Data may be revised by the provider after retrieval. FIRST will not revise or update reports to reflect any weather data changes. For information purposes only.

2024 Corn - Indiana North [INNO]

Early-Season Test Products (44 Total)

Company/Brand	Product/Brand	Technology	RIB	RM	Seed Treat.
Augusta	A2057-3110	3110	Y*	107	CM,C2
Augusta	A2254	PCE	N	104	AC,P5V
Augusta	A2257	PCE	N	107	AC,P5V
Augusta	A2357	V	N	107	CM,C2
Channel	204-54TRECRIB	TRE	Y	104	AC,P5V,EDC-EL
Channel	205-08TRECRIB	TRE	Y	105	AC,P5V,EDC-EL
Channel	207-87VT2PRIB	VT2P	Y	107	AC,P5V,EDC-B
Channel	208-62VT2PRIB	VT2P	Y	108	AC,P5V,EDC-B
Dairyland	DS-4488PCE	PCE	Y	104	Lum, L1
Dairyland	DS-4533PCE	PCE	Y	105	Lum, L1
Dairyland	DS-4833AM	AM	Y	108	Lum
Dyna-Gro	D44PN25RA	PCE	Y	104	AC,P5V
Ebberts	7188PC	PCE	Y*	108	Ebberts
Ebberts	7209TR RIB	TRE	Y	108	Ebberts
Ebberts	7557PC	PCE	Y	107	Ebberts
Ebberts	9779SSX RIB	STX	Y	108	Ebberts
FS InVision	FS 5335P RIB	STXP	Y	103	AC,P5V
FS InVision	FS 5525VDG RIB	VT2PDG	Y	105	AC,P5V
FS InVision	FS 5835V RIB	VT2P	Y	108	AC,P5V
FS InVision	FS 5845P RIB	STXP	Y	108	AC,P5V
Golden Harvest	G03U08-D	D	Y	103	CM,C1,Vi,Va
Golden Harvest	G08U00-V	V	Y	108	CM,C1,Vi,Va
Integra	5443 DGVT2PRIB	VT2PDG	N	104	AC,P5V,St,SU
Integra	5584 PCE	PCE	Y*	105	AC,P5V,St,SU
Integra	5775 VT2PRIB	VT2P	Y	107	AC,P5V,St,SU
Integra	5802 VT2PRIB	VT2P	Y	108	AC,P5V,St,SU
M & W Seeds	MW 103A VT2P	VT2P	Y	103	Treated
M & W Seeds	MW C104 PWR	PCE	Y	104	Treated
M & W Seeds	MW D108 PWR	PCE	Y	108	Treated
NK Brand	NK0367-AA	AA	Y	103	CM,C5,Vi,Va
NK Brand	NK0880-V	V	Y	108	CM,C1,Vi,Va
Partners Brand	PB 7928-VT2PRIB GC	VT2P	Y	109	AL2500
Pioneer	P0306AM GC	AM,AQ	Y	103	Lum
Pioneer	P0720AM CK	AM	Y	107	Lum, L1
Purple Ribbon	24P07PCE	PCE	Y	107	CM,C2
Wyckoff	2487 PCE	PCE	Y	106	CM,C2,Vi,Va
Wyckoff	2515 VT2P RIB	VT2P	Y	107	AC,P2
Wyckoff	2574 TRE RIB	TRE	Y	108	AC,P2
Wyckoff	2583 TRE RIB	TRE	Y	108	AC,P2
Wyckoff	2632 SS RIB	STX	Y	108	AC,P5V
Wyffels	W3309RIB	STXP	Y*	103	CM,C2,Vi,Va
Wyffels	W3579RIB	STXP	Y*	105	CM,C2,Vi,Va

Company/Brand	Brand/Product	Technology	RIB	RM	Seed Treat.
Wyffels	W4439RIB	STXP	Y	106	CM,C2,Vi,Va
Wyffels	W5406RIB	VT2P	Y*	108	CM,C2,Vi,Va

* FIRST does not inspect products for refuge blend. N* indicates the product was entered without a refuge component by the sponsoring seed company. Prior year entries may contain refuge blend.

2024 Corn - Indiana North [INNO]

Full-Season Test Products (48 Total)

Company/Brand	Product/Brand	Technology	RIB	RM	Seed Treat.
Augusta	A1259-DV	DV	Y*	109	CM,C2
Augusta	A2060	PCE	N*	110	CM,C2
Augusta	A2061-PWE	PCE	N	111	CM,C2
Augusta	A2160	PCE	N	110	CM,C2
Augusta	A4961-V	V	N	111	CM,C2
Channel	209-25SSPRIB	STXP	Y	109	AC,P5V,EDC-B
Channel	210-08VT2PRIB	VT2P	Y	110	AC,P5V,EDC-B
Channel	211-11VT2PRIB	VT2P	Y*	111	AC,P5V,EDC-B
Channel	211-70TRECRIB	TRE	Y	111	AC,P5V,EDC-B
Dairyland	DS-4969PCE	PCE	Y	109	Lum, L1
Dairyland	DS-5128PCE	PCE	Y	111	Lum, L1
Ebberts	6883DGV2P RIB	VT2PDG	Y	112	Ebberts
Ebberts	7442PC	PCE	Y	112	Ebberts
Ebberts	7660PC	PCE	Y	110	Ebberts
Ebberts	7993PC	PCE	Y	112	Ebberts
FS InVision	FS 5949PC RA	PCE	Y	109	AC,P5V
FS InVision	FS 6017V RIB	VT2P	Y	110	AC,P5V
FS InVision	FS 6137PC RA	PCE	N	111	AC,P5V
FS InVision	FS 6245V RIB	VT2P	Y	112	AC,P5V,EDC-EL
FS InVision	FS 6248V RIB	VT2P	Y	112	CM,C5,Vi
Golden Harvest	G10L16-DV	DV	Y	110	AVC,C1,Vi,Va
Golden Harvest	G11V76-AA	AA	Y	111	AVC,C1,Vi,Va
Golden Harvest	G12S75-D	D	Y	112	AVC,C1,Vi,Va
Golden Harvest	G12U11-AA	AA	Y	112	CM,C1,Vi,Va
Great Heart	HT-6950PCE	PCE	N	109	F,I
Great Heart	HT-7195TRE	TRE	N	111	F,I
Great Heart	HT-7272PCE	PCE	N	112	F,I
Integra	5935PCE	PCE	Y	109	AC,P5V,St,SU
Integra	6061 SSRIB	STX	Y	110	AC,P5V,St,SU
Integra	6274 VT2PRIB	VT2P	Y	112	NA
NK Brand	NK1056-V	V	Y	110	CM,C2,Vi,Va
NK Brand	NK1188-AA	AA	Y	111	CM,C5,Vi,Va
NK Brand	NK1228-AA	AA	Y	112	CM,C1,Vi,Va
Pioneer	P0720AM CK	AM	Y	107	Lum, L1
ProHarvest	80P75 PCE	PCE	Y	110	AC,P5V,Va
ProHarvest	81P20 PCE	PCE	Y	111	AC,P5V,Va
Purple Ribbon	23A10VT2PRIB	VT2P	Y	110	AC,P2
Purple Ribbon	24P11PCE	PCE	Y	111	CM,C2
Wyckoff	2667 DG VT2P RIB	VT2PDG	Y	111	AC,P2
Wyckoff	2676 TRE RIB	TRE	Y*	112	AC,P2
Wyckoff	2679 DG VT2P RIB	VT2PDG	Y	112	AC,P2
Wyckoff	2685 TRE RIB	TRE	Y	112	AC,P2

Company/Brand	Brand/Product	Technology	RIB	RM	Seed Treat.
Wyckoff	2688 PCE	PCE	Y	112	CM,C2,Vi,Va
Wyffels	W6215RIB	TRE	Y*	109	AC,P5V
Wyffels	W6479	STXP	N	110	AC,P5V
Wyffels	W6505	TRE	N	110	AC,P5V
Wyffels	W6886RIB	VT2P	Y*	111	CM,C2,Vi,Va
Wyffels	W7048RIB	STX	Y*	111	CM,C2,Vi,Va

* FIRST does not inspect products for refuge blend. N* indicates the product was entered without a refuge component by the sponsoring seed company. Prior year entries may contain refuge blend.

Footnotes and Abbreviations Descriptions

Brand Footnotes

CK	Identifies a check product included in early- and full-season tests.
GC	Grower Comparison product included by FIRST when space permits.
^	Innotech™ brand seed is distributed by Rob-See-Co, LLC. Innotech™ is a trademark of Syngenta. Power Plus® brand seed is distributed by Burrus. Power Plus® is a registered trademark of Corteva Agriscience.

Corn Technologies

3110	Agrisure® Viptera® 3110 (Vip, CB,LL,GT)
AA	Agrisure® Above (CB,HX,LL,GT), formerly Agrisure® 3120
AM	Optimum® AcreMax®
AQ	Optimum® AQUAmax®
D	Duracade™ (CB,HX,RW,RW2,LL,GT), formerly Agrisure Duracade® 5122
DV	DuracadeViptera™ (Vip,CB,HX,RW,RW2,LL,GT), formerly Agrisure Duracade® 5222
PCE	PowerCore® Enlist®
STX	SmartStax®
STXP	SmartStax® Pro with RNAi Technology
TRE	Trecepta®
V	Viptera™ (Vip,CB,HX,LL,GT), formerly Agrisure Viptera® 3220
VT2P	VT Double PRO®
VT2PDG	DroughtGard® with VT Double PRO®

NOTE: The refuge component genetics may vary in a refuge blend seed product.

Corn Seed Treatments*

NA	Not Available
AC,P2	Acceleron® 250
AC,P5V	Acceleron® Poncho 500/Votivo
AC,P5V,EDC-B	Acceleron® BASIC Poncho 500/Votivo with Enhanced Disease Control
AC,P5V,EDC-EL	Acceleron® ELITE Poncho 500/Votivo with Enhanced Disease Control
AC,P5V,St,SU	Acceleron® Poncho 500/Votivo, Stamina, StepUp
AC,P5V,Va	Acceleron® Poncho 500/Votivo, Vayantis®
AL2500	Alert 2500, Surefire
AVC,C1,Vi,Va	Avicta® Complete 1250, Vibrance®, Vayantis®
CM,C1,Vi,Va	CruiserMaxx® 1250 with Vibrance, Vayantis®
CM,C2	CruiserMaxx® 250
CM,C2,Vi,Va	CruiserMaxx® 250 with Vibrance, Vayantis®
CM,C5,Vi	CruiserMaxx® 500 with Vibrance
CM,C5,Vi,Va	CruiserMaxx® 500 with Vibrance, Vayantis®
Ebberts	Ebberts Complete Corn (Ebberts Field Seeds)
F,I	Fungicide, Insecticide
Lum	LumiGEN™ (Corteva Agriscience)
Lum, L1	LumiGEN, Lumisure 1250
Treated	Treated seed, unspecified

* Seed treatments may include unspecified plant health promoting components.