

Test by: Agri Seed Research, LLC Louisburg, KS

2024 Corn Grain Top 30 Harvest Report

Kansas Northeast [KSNE] SENECA, KS
Scott Farwell, Nemaha County, KS 68345

Early-Season Test	107 - 112 Day CRM B2024KSNE06a
Top 30 of 30	For Gross Income (Sorted by Yield) Average of (3) Replications
PREV. CROP/HERB:	Soybeans / Glyphosate, Authority, 2,4-D
SOIL DESCRIPTION:	Burchard-Steinauer clay loam, well drained, non-irrigated
SOIL CONDITION:	No-Till, high P, medium K, 6.3 pH, 3.9% OM, 20.5 CEC
PEST MANAGEMENT:	Glyphosate, 2,4-D, S- Metolachlor, Atrazine, Mesotrione
FERTILITY - Applied N:	180 Spring
Applied N-P-K (units):	180-50-30
SEEDED - RATE - ROW:	Apr 21 30.0 /A 30" spacing
HARVESTED - STAND:	Oct 25 28.8 /A

TEST COMMENTS:

This site was planted into a clean seedbed and had ample moisture for emergence. April, May and June brought several rains, 8 inches over normal annual rainfall in these three months combined. July, August and September were hot and on the drier side with a few timely rains just when the corn needed it. Plants were standing well with good weed control.

Company/Brand	Product/Brand	Technol.†	RM	Yield Bu/A ↓	Moisture %	Lodging %	Stand (x 1000)	Gross Income \$/Acre	Rank
Pioneer	P0859AM GC ↗	AM	108	206.9	13.2	0	28.6	807	1
Taylor	6012 TRE ↗	TRE	111	206.1	13.8	0	29.2	804	2
DeKalb	DKC56-26RIB GC ↗	TRE	106	206.1	13.9	0	28.6	804	3
Pioneer	P1170AM GC ↗	AM	111	205.7	14.2	0	28.6	802	4
Renk	RK800VT4PRO ↗	VT4P	110	205.4	13.8	0	28.2	801	5
Integra	6244PCE ↗	PCE	112	205.2	13.9	0	29.2	800	6
Golden Harvest	G12U11-AA ↗	AA	112	204.1	14.2	0	29.2	796	7
Pioneer	P0995AM GC ↗	AM,AQ	109	204.1	14.5	0	28.2	796	8
Mustang	75T12 PCE RA GC ↗	PCE	112	204.1	13.8	0	28.9	796	9
Golden Harvest	G11V76-AA ↗	AA	111	203.5	13.9	0	27.6	794	10
Augusta	A4961-V ↗	V	111	201.9	13.4	0	29.2	787	11
Integra	5802 VT2PRIB ↗	VT2P	108	201.7	13.2	0	28.6	787	12
Mustang	63A06 TRE RIB GC ↗	TRE	106	201.7	13.6	0	29.2	787	13
Taylor	EXP C-111-24 GC ↗	VT4P	111	197.3	13.8	0	28.9	769	14
Pioneer	P09944AM GC ↗	AM	109	195.7	13.5	0	27.9	763	16
Pioneer	P1122AML GC ↗	AML	111	194.8	13.7	0	28.9	760	17
Mustang	570PR RIB ↗	VT2P	112	192.1	14.2	0	29.2	749	18
Augusta	A2260 GC ↗	AA	110	192.0	13.7	0	28.6	749	19
Renk	RK785PCE ↗	PCE	109	188.8	13.9	0	29.2	736	20
Mustang	429PR RIB ↗	VT2P	110	188.2	13.4	0	27.6	734	21
Renk	RK773TRE ↗	TRE	109	187.3	14.3	0	28.2	730	22
Augusta	A1259-DV ↗	DV	109	187.0	14.3	0	29.2	729	23
Taylor	EXP C-112A-24 ↗	VT2P	112	186.4	14.5	0	28.9	727	24
DeKalb	DKC62-70RIB GC ↗	VT2P	112	186.0	13.7	0	29.9	725	25
Renk	RK825VT4P ↗	VT4P	112	185.7	13.6	0	28.9	724	26
Renk	RK766SSPRO ↗	STXP	109	184.6	14.5	0	28.6	720	27
Taylor	EXP A-112-24 ↗	TRE	112	180.5	14.1	0	28.9	704	28
Integra	6274 VT2PRIB ↗	VT2P	112	177.0	13.9	0	28.9	690	29
Augusta	A6362-VEZ GC ↗	V	112	173.9	13.4	0	29.6	678	30
DEKALB	DKC111-35RIB CK	VT2P	111	195.9	13.8	0	28.9	764	15

Adam Stuteville

adam.stuteville@firstseedtests.com, (913) 206-6080

Averages =	195.0	13.9	0	28.8	760
LSD (0.10) =	7.1	0.5	ns		
LSD (0.25) =	3.7	0.2	ns		
C.V. =	3.4				

Historic yield: 161.67 bu/a, 7 yr(s)

Yield & Income Factors: Base Moisture = 15.0% Shrink = 1.3 Drying = \$0.04 Prices: GMO = \$3.90

Report Date: 10/30/2024

† See last page for abbreviation descriptions. Dark colored row identifies the check product found in early- and full-season tests. **Bold** yields are significantly above test average by LSD(0.10). **Italicized** brands exceed the grain moisture limit for this test. **ns** = column values not significantly different. ↗ Links to full product yield results at www.firstseedtests.com

©2024, All rights reserved to Farmers' Independent Research of Seed Technologies, LLC.

Additional reports available at www.firstseedtests.com

Test by: Agri Seed Research, LLC Louisburg, KS

2024 Corn Grain Top 30 Harvest Report

Kansas Northeast [KSNE] SENECA, KS
Scott Farwell, Nemaha County, KS 68345

Full-Season Test	113 - 117 Day CRM B2024KSNE06b
Top 25 of 25	For Gross Income (Sorted by Yield) Average of (3) Replications
PREV. CROP/HERB:	Soybeans / Glyphosate, Authority, 2,4-D
SOIL DESCRIPTION:	Burchard-Steinauer clay loam, well drained, non-irrigated
SOIL CONDITION:	No-Till, high P, medium K, 6.3 pH, 3.9% OM, 20.5 CEC
PEST MANAGEMENT:	Glyphosate, 2,4-D, S- Metolachlor, Atrazine, Mesotrione
FERTILITY - Applied N:	180 Spring
Applied N-P-K (units):	180-50-30
SEEDED - RATE - ROW:	Apr 21 30.0 /A 30" spacing
HARVESTED - STAND:	Oct 25 29.0 /A

TEST COMMENTS:

This site was planted into a clean seedbed and had ample moisture for emergence. April, May and June brought several rains, 8 inches over normal annual rainfall in these three months combined. July, August and September were hot and on the drier side with a few timely rains just when the corn needed it. Plants were standing well with good weed control.

Company/Brand	Product/Brand	Technol.†	RM	Yield Bu/A ↓	Moisture %	Lodging %	Stand (x 1000)	Gross Income \$/Acre	Rank
Pioneer	P14830AML GC ↗	AML	114	211.1	13.7	0	28.6	823	1
Taylor	EXP A-115-24 ↗	VT2P	115	210.9	13.1	0	28.9	823	2
DeKalb	DKC64-22RIB GC ↗	VT2P	114	208.5	13.7	0	29.6	813	3
Integra	6624TRERIB ↗	TRE	116	207.0	14.3	0	28.9	807	4
Mustang	83A15 TRE RIB ↗	TRE	115	206.3	14.3	0	29.2	805	5
Taylor	6015 TRE ↗	TRE	115	206.1	14.1	0	29.2	804	6
Augusta	A5065-3110GT ↗	3110	115	202.5	13.9	0	28.6	790	7
Mustang	662TRE RIB ↗	TRE	113	201.2	14.2	0	28.9	785	8
Pioneer	P13777PCE GC ↗	PCE	113	200.6	13.4	0	28.6	782	9
Golden Harvest	G13U96-DV ↗	DV	113	200.2	13.9	1	29.2	781	10
Renk	RK958VT2P ↗	VT2P	115	198.1	14.0	0	29.6	773	11
Augusta	A4565-V ↗	V	115	197.5	13.7	0	29.2	770	12
Augusta	A2564 GC ↗	AA	114	197.4	14.3	0	28.9	770	13
DeKalb	DKC65-95RIB GC ↗	VT2P	115	196.3	13.7	0	28.6	766	14
Renk	RK832SSPRO ↗	STXP	113	195.6	13.9	0	28.6	763	15
DeKalb	DKC117-78RIB GC ↗	VT2P	117	195.3	13.0	0	28.9	762	16
Integra	6493 VT2PRIB ↗	VT2P	114	194.7	14.3	0	29.6	759	18
Augusta	A2063 GC ↗	DV	113	194.2	14.2	0	29.2	757	19
Renk	RK876VT2P ↗	VT2P	113	194.1	14.6	0	29.2	757	20
Pioneer	P13050AM GC ↗	AM	113	193.0	13.8	0	28.6	753	21
Taylor	EXP C-115-24 ↗	TRE	115	190.9	13.8	0	28.6	745	22
Golden Harvest	G13U29-VZ ↗	VZ	113	190.9	14.2	0	28.9	745	23
Taylor	9951 ↗	VT2P	115	190.4	13.4	0	28.2	743	24
Renk	RK921VT2P ↗	VT2P	115	188.2	13.5	0	28.9	734	25
DEKALB	DKC111-35RIB CK	VT2P	111	194.7	13.3	0	29.6	759	17



Adam Stuteville

adam.stuteville@firstseedtests.com, (913) 206-6080

Averages = **198.6** **13.9** **0** **29.0** **775**

LSD (0.10) = 7.5 0.3 ns

LSD (0.25) = 3.9 0.2 ns

C.V. = 3.6

Historic yield: 161.67 bu/a, 7 yr(s)

Yield & Income Factors: Base Moisture = 15.0% Shrink = 1.3 Drying = \$0.04 Prices: GMO = \$3.90

Report Date: 10/30/2024

† See last page for abbreviation descriptions. Dark colored row identifies the check product found in early- and full-season tests. **Bold** yields are significantly above test average by LSD(0.10). **Italicized** brands exceed the grain moisture limit for this test. **ns** = column values not significantly different. ↗ Links to full product yield results at www.firstseedtests.com

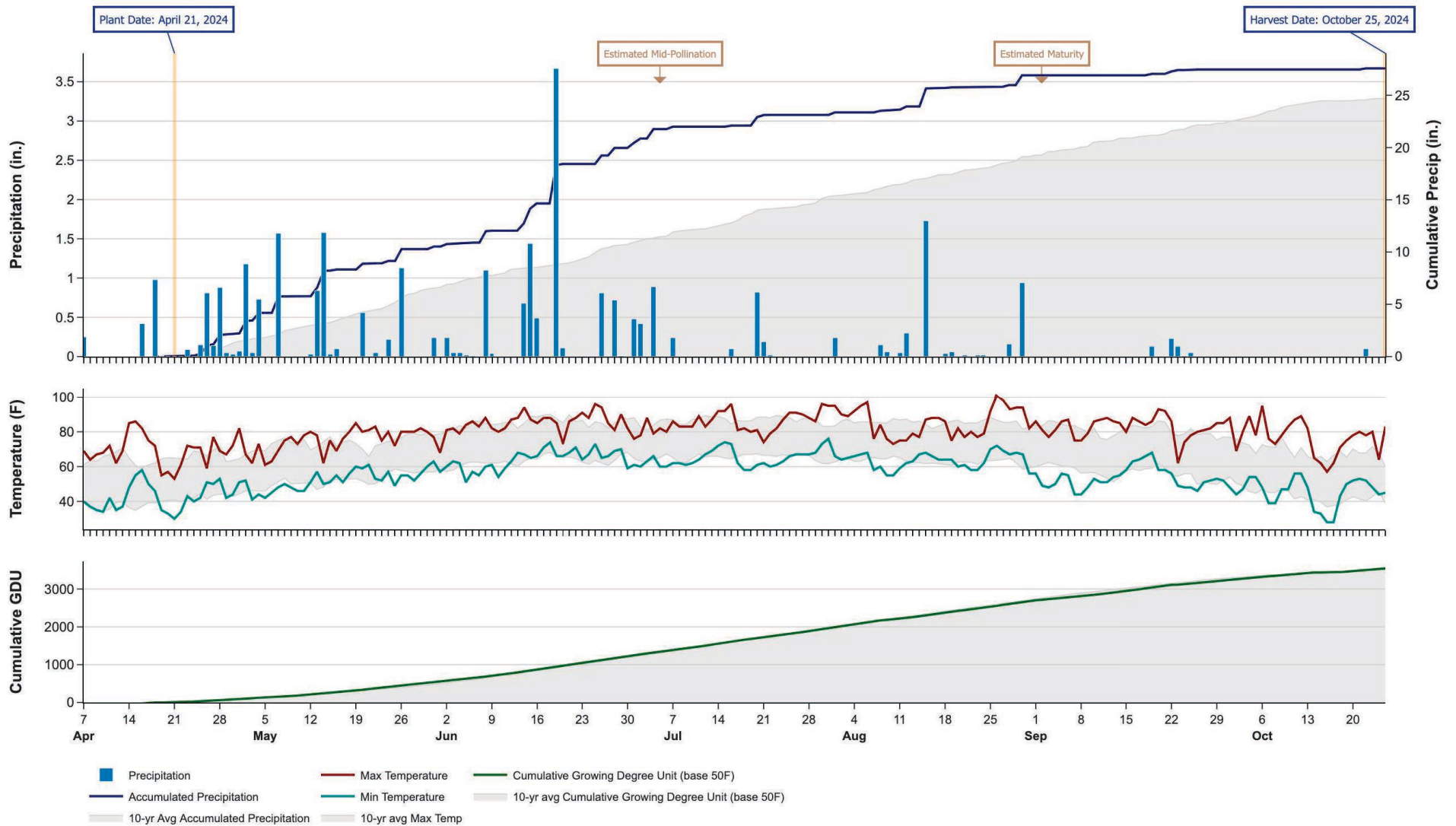
Additional reports available at www.firstseedtests.com

©2024, All rights reserved to Farmers' Independent Research of Seed Technologies, LLC.

2024 Corn - Kansas Northeast [KSNE]

Weather Conditions Summary at SENECA, KS

Monthly Total	Apr*	May	Jun	Jul	Aug	Sep	Oct*	Total
Precip (in) (Diff)	3.8 2.5 (+1.3)	8.4 5.2 (+3.1)	9.4 4.2 (+5.2)	3.2 4.6 (-1.4)	3.8 3.8 (-0.0)	0.6 3.2 (-2.7)	0.1 2.4 (-2.3)	29.2 25.9 (+3.3)
GDU Avg (Diff)	217 149 (+67)	446 403 (+42)	710 712 (-2)	740 784 (-44)	706 744 (-38)	546 566 (-20)	318 230 (+87)	3683 3591 (+91)



* First monthly total starts on the date 14 days prior to planting and final monthly total ends on the harvest date.

Note: Weather information from PRISM Climate Group. Data may be revised by the provider after retrieval. FIRST will not revise or update reports to reflect any weather data changes. For information purposes only.

2024 Corn - Kansas Northeast [KSNE]

Early-Season Test Products (30 Total)

Company/Brand	Product/Brand	Technology	RIB	RM	Seed Treat.
Augusta	A1259-DV	DV	Y*	109	CM,C2
Augusta	A2260 GC	AA	Y*	110	CM,C2
Augusta	A4961-V	V	N	111	CM,C2
Augusta	A6362-VEZ GC	V	Y	112	CM,C2
DeKalb	DKC111-35RIB CK	VT2P	Y*	111	AC,P5V
DeKalb	DKC56-26RIB GC	TRE	Y	106	AC,P5V
DeKalb	DKC62-70RIB GC	VT2P	Y	112	AC,P5V
Golden Harvest	G11V76-AA	AA	Y	111	AVC,C1,Vi,Va
Golden Harvest	G12U11-AA	AA	Y	112	CM,C1,Vi,Va
Integra	5802 VT2PRIB	VT2P	Y	108	AC,P5V,St,SU
Integra	6244PCE	PCE	N	112	NA
Integra	6274 VT2PRIB	VT2P	Y	112	NA
Mustang	429PR RIB	VT2P	Y	110	CM,C5
Mustang	570PR RIB	VT2P	Y	112	CM,C5
Mustang	63A06 TRE RIB GC	TRE	Y*	106	CM,C5
Mustang	75T12 PCE RA GC	PCE	Y*	112	CM,C5
Pioneer	P0859AM GC	AM	Y	108	Lum, L1
Pioneer	P09944AM GC	AM	Y*	109	Lum, L1
Pioneer	P0995AM GC	AM,AQ	N*	109	Lum, L1
Pioneer	P1122AML GC	AML	Y	111	Lum, L1
Pioneer	P1170AM GC	AM	Y	111	Lum, L1
Renk	RK766SSPRO	STXP	Y*	109	AC,P5V,EDC-EL
Renk	RK773TRE	TRE	Y*	109	AC,P2
Renk	RK785PCE	PCE	N	109	Lum
Renk	RK800VT4PRO	VT4P	N	110	AC,P5V,EDC-EL
Renk	RK825VT4P	VT4P	N	112	AC,P5V,EDC-EL
Taylor	6012 TRE	TRE	N	111	CM,C2
Taylor	EXP A-112-24	TRE	N	112	CM,C2
Taylor	EXP C-111-24 GC	VT4P	N	111	CM,C2
Taylor	EXP C-112A-24	VT2P	N	112	CM,C2

* FIRST does not inspect products for refuge blend. N* indicates the product was entered without a refuge component by the sponsoring seed company. Prior year entries may contain refuge blend.

2024 Corn - Kansas Northeast [KSNE]

Full-Season Test Products (25 Total)

Company/Brand	Product/Brand	Technology	RIB	RM	Seed Treat.
Augusta	A2063 GC	DV	N	113	CM,C2
Augusta	A2564 GC	AA	Y*	114	CM,C2
Augusta	A4565-V	V	Y*	115	CM,C2
Augusta	A5065-3110GT	3110	N	115	CM,C2
DeKalb	DKC111-35RIB CK	VT2P	Y*	111	AC,P5V
DeKalb	DKC117-78RIB GC	VT2P	Y*	117	Treated
DeKalb	DKC64-22RIB GC	VT2P	Y	114	AC,P5V
DeKalb	DKC65-95RIB GC	VT2P	Y	115	AC,P5V
Golden Harvest	G13U29-VZ	VZ	Y	113	CM,C2,Vi,Va
Golden Harvest	G13U96-DV	DV	Y	113	CM,C1,Vi,Va
Integra	6493 VT2PRIB	VT2P	Y*	114	NA
Integra	6624TRERIB	TRE	Y	116	NA
Mustang	662TRE RIB	TRE	Y	113	CM,C5
Mustang	83A15 TRE RIB	TRE	Y	115	CM,C5
Pioneer	P13050AM GC	AM	Y	113	Lum, L1
Pioneer	P13777PCE GC	PCE	Y	113	Lum, L1
Pioneer	P14830AML GC	AML	Y	114	Lum, L1
Renk	RK832SSPRO	STXP	Y*	113	AC,P5V,EDC-EL
Renk	RK876VT2P	VT2P	Y*	113	AC,P2
Renk	RK921VT2P	VT2P	N	115	AC,P5V,EDC-EL
Renk	RK958VT2P	VT2P	Y*	115	AC,P2
Taylor	6015 TRE	TRE	N	115	CM,C2
Taylor	9951	VT2P	Y	115	CM,C2
Taylor	EXP A-115-24	VT2P	N	115	CM,C2
Taylor	EXP C-115-24	TRE	N	115	CM,C2

* FIRST does not inspect products for refuge blend. N* indicates the product was entered without a refuge component by the sponsoring seed company. Prior year entries may contain refuge blend.

Footnotes and Abbreviations Descriptions

Brand Footnotes

CK	Identifies a check product included in early- and full-season tests.
GC	Grower Comparison product included by FIRST when space permits.
^	Innotech™ brand seed is distributed by Rob-See-Co, LLC. Innotech™ is a trademark of Syngenta. Power Plus® brand seed is distributed by Burrus. Power Plus® is a registered trademark of Corteva Agriscience.

Corn Technologies

3110	Agrisure® Viptera® 3110 (Vip, CB,LL,GT)
AA	Agrisure® Above (CB,HX,LL,GT), formerly Agrisure® 3120
AM	Optimum® AcreMax®
AML	Optimum® AcreMax® Leptra® (Vip,YGCB,HX,LL,RR2)
AQ	Optimum® AQUAmax®
DV	DuracadeViptera™ (Vip,CB,HX,RW,RW2,LL,GT), formerly Agrisure Duracade® 5222
PCE	PowerCore® Enlist®
STXP	SmartStax® Pro with RNAi Technology
TRE	Trecepta®
V	Viptera™ (Vip,CB,HX,LL,GT), formerly Agrisure Viptera® 3220
VT2P	VT Double PRO®
VT4P	VT4Pro™ with RNAi Technology
VZ	Viptera™ Z3 (Vip,CB,VTP,LL,GT), formerly Agrisure Viptera® 3330

NOTE: The refuge component genetics may vary in a refuge blend seed product.

Corn Seed Treatments*

NA	Not Available
AC,P2	Acceleron® 250
AC,P5V	Acceleron® Poncho 500/Votivo
AC,P5V,EDC-EL	Acceleron® ELITE Poncho 500/Votivo with Enhanced Disease Control
AC,P5V,St,SU	Acceleron® Poncho 500/Votivo, Stamina, StepUp
AVC,C1,Vi,Va	Avicta® Complete 1250, Vibrance®, Vayantis®
CM,C1,Vi,Va	CruiserMaxx® 1250 with Vibrance, Vayantis®
CM,C2	CruiserMaxx® 250
CM,C2,Vi,Va	CruiserMaxx® 250 with Vibrance, Vayantis®
CM,C5	Cruisermaxx® 500
Lum	LumiGEN™ (Corteva Agriscience)
Lum, L1	LumiGEN, Lumisure 1250
Treated	Treated seed, unspecified

* Seed treatments may include unspecified plant health promoting components.