

Test by: M&D Seed Research, LLC Van Buren, IN

## 2024 Corn Grain Top 30 Harvest Report

Ohio Northwest [OHNW] ARCHBOLD, OH  
Darin Fry, Fulton County, OH

<b>Early-Season Test</b>	103 - 108 Day CRM B2024OHNW01a
<b>Top 30 of 32</b>	For Gross Income (Sorted by Yield) Average of (4) Replications
<b>PREV. CROP/HERB:</b>	Soybeans / Roundup
<b>SOIL DESCRIPTION:</b>	Blount loam, moderately drained, non-irrigated
<b>SOIL CONDITION:</b>	Conventional W/ Fall Till, very high P, very high K, 5.7 pH, 2.7% OM, 13.8 CEC
<b>PEST MANAGEMENT:</b>	Roundup
<b>FERTILITY - Applied N:</b>	55 Spring, 144 Sidedress
<b>Applied N-P-K (units):</b>	199-27-71
<b>SEEDED - RATE - ROW:</b>	May 16 33.6 /A 30" spacing
<b>HARVESTED - STAND:</b>	Oct 21 33.2 /A

### TEST COMMENTS:

*This has always been a good site for us. Good fertility with good drainage and weed control. The site had good rains through July, then turned dry later in the growing season. The plot was very growthy and healthy early but had some standability issues into fall with some sporadic animal damage. Overall, it was a good yielding plot with a range of moistures among plots.*

Company/Brand	Product/Brand	Technol.†	RM	Yield Bu/A ↓	Moisture %	Lodging %	Stand (x 1000)	Gross Income \$/Acre	Rank
Ebberts	7188PC ↗	PCE	108	<b>239.0</b>	17.5	1	32.6	824	1
Ebberts	7209TR RIB ↗	TRE	108	<b>237.2</b>	17.2	1	33.2	821	2
FS InVision	FS 5335P RIB ↗	STXP	103	<b>231.8</b>	17.1	1	33.0	803	4
Integra	5802 VT2PRIB ↗	VT2P	108	<b>230.4</b>	18.3	1	32.4	787	5
Integra	5584 PCE ↗	PCE	105	<b>230.0</b>	16.4	1	33.5	804	3
Wyckoff	2432 TRE RIB ↗	TRE	105	227.9	18.5	1	33.5	777	9
Golden Harvest	G08U00-V ↗	V	108	225.8	16.8	1	32.8	785	6
NK Brand	NK0880-V ↗	V	108	224.4	17.4	1	32.8	775	10
NK Brand	NK0367-AA ↗	AA	103	224.0	16.9	1	33.0	778	8
Wyckoff	2336 TRE RIB ↗	TRE	103	222.7	17.9	1	33.5	765	12
M & W Seeds	MW 103A VT2P ↗	VT2P	103	220.6	16.5	21	33.2	770	11
Seed Consultants	SC1042Q ↗	QR	104	220.3	17.1	1	33.5	764	13
FS InVision	FS 5525VDG RIB ↗	VT2PDG	105	218.8	17.5	1	33.5	755	14
FS InVision	FS 5845P RIB ↗	STXP	108	213.3	17.4	1	33.5	737	15
Wyckoff	2574 TRE RIB ↗	TRE	108	212.5	18.5	1	33.5	724	20
M & W Seeds	MW C104 PWR ↗	PCE	104	211.8	17.3	1	33.5	732	16
FS InVision	FS 5835V RIB ↗	VT2P	108	211.6	17.5	1	33.2	730	17
Seed Consultants	SC1055PCE ↗	PCE	105	209.8	16.8	1	33.2	729	18
Wyckoff	2632 SS RIB ↗	STX	108	209.4	17.5	1	33.2	722	22
Rob-See-Co	RC5768-VT2P GC ↗	VT2P	107	208.8	16.5	1	33.5	729	19
Wyckoff	2515 VT2P RIB ↗	VT2P	107	207.5	16.6	5	32.8	723	21
Golden Harvest	G03U08-D ↗	D	103	207.2	17.1	1	33.5	718	23
Augusta	A1954 PCE ↗	PCE	104	199.4	16.6	1	32.6	695	24
Partners Brand	PB 7928-VT2PRIB GC ↗	VT2P	109	199.0	16.6	1	33.2	693	25
Seed Consultants	SC1084AM ↗	AM	108	196.0	18.2	1	32.1	671	27
Ebberts	7557PC ↗	PCE	107	193.2	16.7	1	33.5	673	26
Integra	5443 DGVT2PRIB ↗	VT2PDG	104	192.9	17.4	1	33.5	666	28
Augusta	A2254 ↗	PCE	104	189.8	18.2	4	33.5	649	29
M & W Seeds	MW D108 PWR ↗	PCE	108	187.0	17.2	1	33.0	648	30
Ebberts	9779SSX RIB ↗	STX	108	182.6	17.1	2	33.5	633	31
<b>PIONEER</b>	<b>P0720AM CK</b>	<b>AM</b>	<b>107</b>	<b>225.2</b>	<b>16.7</b>	<b>4</b>	<b>33.0</b>	<b>784</b>	<b>7</b>
				<b>Averages =</b>	<b>212.7</b>	<b>17.2</b>	<b>2</b>	<b>33.2</b>	<b>734</b>
				<b>LSD (0.10) =</b>	15.8	ns	ns		
				<b>LSD (0.25) =</b>	8.3	ns	ns		
				<b>C.V. =</b>	8.1				
				Historic yield: 250.08 bu/a, 8 yr(s)					



Matt Turner

mattturner1979@yahoo.com, (317) 606-9040

**Yield & Income Factors:** Base Moisture = 15.0% Shrink = 1.3 Drying = \$0.04 Prices: GMO = \$3.55; non-GMO = \$3.55

Report Date: 10/23/2024

† See last page for abbreviation descriptions. Dark colored row identifies the check product found in early- and full-season tests. **Bold** yields are significantly above test average by LSD(0.10). **Italicized** brands exceed the grain moisture limit for this test. **ns** = column values not significantly different. ↗ Links to full product yield results at [www.firstseedtests.com](http://www.firstseedtests.com)

©2024, All rights reserved to Farmers' Independent Research of Seed Technologies, LLC.

Additional reports available at [www.firstseedtests.com](http://www.firstseedtests.com)

Test by: M&D Seed Research, LLC Van Buren, IN

## 2024 Corn Grain Top 30 Harvest Report

Ohio Northwest [OHNW] ARCHBOLD, OH  
Darin Fry, Fulton County, OH

<b>Full-Season Test</b>	109 - 112 Day CRM B2024OHNW01b
<b>Top 30 of 40</b>	For Gross Income (Sorted by Yield) Average of (4) Replications
<b>PREV. CROP/HERB:</b>	Soybeans / Roundup
<b>SOIL DESCRIPTION:</b>	Blount loam, moderately drained, non-irrigated
<b>SOIL CONDITION:</b>	Conventional W/ Fall Till, very high P, very high K, 5.7 pH, 2.7% OM, 13.8 CEC
<b>PEST MANAGEMENT:</b>	Roundup
<b>FERTILITY - Applied N:</b>	55 Spring, 144 Sidedress
<b>Applied N-P-K (units):</b>	199-27-71
<b>SEEDED - RATE - ROW:</b>	May 16 33.6 /A 30" spacing
<b>HARVESTED - STAND:</b>	Oct 21 32.9 /A

### TEST COMMENTS:

*This has always been a good site for us. Good fertility with good drainage and weed control. The site had good rains through July, then turned dry later in the growing season. The plot was very growthy and healthy early but had some standability issues into fall with some sporadic animal damage. Overall, it was a good yielding plot with a range of moistures among plots.*

Company/Brand	Product/Brand	Technol.†	RM	Yield Bu/A ↓	Moisture %	Lodging %	Stand (x 1000)	Gross Income \$/Acre	Rank
Integra	6244PCE ↗	PCE	112	<b>255.9</b>	21.3	1	32.8	844	1
Wyckoff	2685 TRE RIB ↗	TRE	112	<b>251.7</b>	21.0	1	33.2	833	2
Seed Consultants	SC1105PCE ↗	PCE	110	<b>247.3</b>	20.1	1	32.5	827	3
Augusta	A2061-PWE ↗	PCE	111	<b>244.8</b>	20.6	1	33.0	814	5
Golden Harvest	G12U11-AA ↗	AA	112	<b>242.3</b>	21.2	1	31.4	800	6
NK Brand	NK1228-AA ↗	AA	112	241.9	18.9	1	32.8	821	4
Wyckoff	2676 TRE RIB ↗	TRE	112	239.1	20.6	1	33.2	795	8
Seed Consultants	SC1093AM ↗	AM	109	238.5	21.1	1	33.2	789	9
FS InVision	FS 6017V RIB ↗	VT2P	110	237.7	19.9	1	32.8	797	7
Wyckoff	2711 VT2P RIB ↗	VT2P	112	237.5	21.0	1	32.8	786	10
Golden Harvest	G12S75-D ↗	D	112	234.4	19.9	1	33.5	786	11
Augusta	A2060 ↗	PCE	110	234.0	20.3	1	33.2	781	13
FS InVision	FS 6137PC RA ↗	PCE	111	231.5	20.6	1	32.5	770	15
Great Heart	HT-7151PCE ↗	PCE	111	230.7	20.2	1	33.0	771	14
Seed Consultants	SC1094PCE ↗	PCE	109	226.7	19.4	1	33.2	765	17
FS InVision	FS 5947T RIB ↗	TRE	109	226.5	19.3	1	32.8	766	16
FS InVision	FS 6133VDG RIB ↗	VT2PDG	111	225.5	19.5	1	33.2	759	18
Wyckoff	2667 DG VT2P RIB ↗	VT2PDG	111	225.0	20.0	1	33.2	753	20
Ebberts	6883DGV2P RIB ↗	VT2PDG	112	224.5	19.5	1	32.8	757	19
Augusta	A2462 ↗	3110	112	224.2	20.4	1	33.2	747	21
Integra	6274 VT2PRIB ↗	VT2P	112	220.2	19.2	1	32.8	745	22
Pioneer	P1136AM GC ↗	AM	111	220.1	19.9	1	33.2	738	24
Partners Brand	PB 8105D GC ↗	D	111	218.9	19.8	1	32.8	735	25
Great Heart	HT-7210VT2P ↗	VT2P	112	218.6	18.7	1	32.8	743	23
Ebberts	7660PC ↗	PCE	110	216.7	20.0	1	32.1	726	26
Ebberts	7442PC ↗	PCE	112	216.6	20.8	1	33.5	719	31
Wyckoff	2679 DG VT2P RIB ↗	VT2PDG	112	216.5	20.0	1	33.2	725	28
Pioneer	P0859AM GC ↗	AM	108	215.7	19.8	1	33.2	725	29
Golden Harvest	G11V76-AA ↗	AA	111	213.2	18.6	1	32.4	726	27
NK Brand	NK1056-V ↗	V	110	212.6	18.9	1	32.8	722	30
PIONEER	P0720AM CK	AM	107	233.4	19.6	1	33.5	786	12
				<b>Averages =</b>	<b>223.6</b>	<b>19.7</b>	<b>1</b>	<b>32.9</b>	<b>753</b>
				LSD (0.10) =	18.5	ns	ns		
				LSD (0.25) =	9.7	ns	ns		
				C.V. =	9.1	Historic yield: 250.08 bu/a, 8 yr(s)			

Matt Turner

mattturner1979@yahoo.com, (317) 606-9040

**Yield & Income Factors:** Base Moisture = 15.0% Shrink = 1.3 Drying = \$0.04 Prices: GMO = \$3.55; non-GMO = \$3.55

Report Date: 10/23/2024

† See last page for abbreviation descriptions. Dark colored row identifies the check product found in early- and full-season tests. **Bold** yields are significantly above test average by LSD(0.10). **Italicized** brands exceed the grain moisture limit for this test. **ns** = column values not significantly different. ↗ Links to full product yield results at [www.firstseedtests.com](http://www.firstseedtests.com)

©2024, All rights reserved to Farmers' Independent Research of Seed Technologies, LLC.

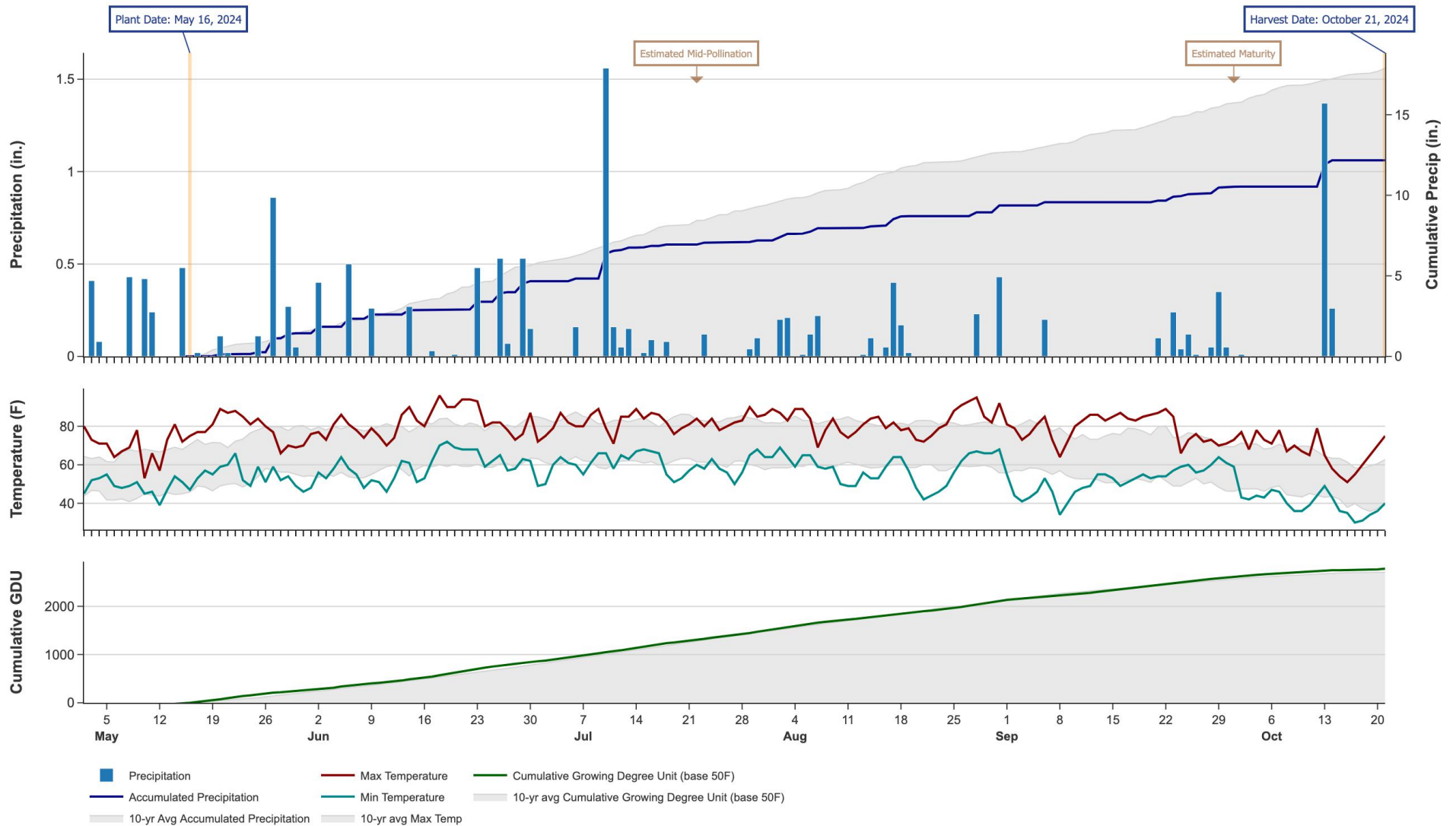
Additional reports available at [www.firstseedtests.com](http://www.firstseedtests.com)

# 2024 Corn - Ohio Northwest [ OHNW ]

## Weather Conditions Summary at ARCHBOLD, OH

Weather Data Retrieved: 10/23/2024

Monthly Total	May*	Jun	Jul	Aug	Sep	Oct*	Total
Precip (in)   (Diff)	3.5   3.6 (-0.1)	3.2   4.1 (-0.9)	2.5   3.7 (-1.2)	2.2   3.3 (-1.1)	1.2   3.0 (-1.9)	1.6   2.2 (-0.6)	14.2   19.9 (-5.7)
GDU   Avg (Diff)	404   334 (+69)	599   570 (+28)	648   691 (-43)	617   638 (-21)	485   446 (+38)	179   144 (+34)	2932   2825 (+106)



\* First monthly total starts on the date 14 days prior to planting and final monthly total ends on the harvest date.

Note: Weather information from PRISM Climate Group. Data may be revised by the provider after retrieval. FIRST will not revise or update reports to reflect any weather data changes. For information purposes only.

## 2024 Corn - Ohio Northwest [ OHNW ]

### Early-Season Test Products (32 Total)

Company/Brand	Product/Brand	Technology	RIB	RM	Seed Treat.
Augusta	A1954 PCE	PCE	N	104	CM,C2
Augusta	A2254	PCE	N	104	AC,P5V
Ebberts	7188PC	PCE	Y*	108	Ebberts
Ebberts	7209TR RIB	TRE	Y	108	Ebberts
Ebberts	7557PC	PCE	Y	107	Ebberts
Ebberts	9779SSX RIB	STX	Y	108	Ebberts
FS InVision	FS 5335P RIB	STXP	Y	103	AC,P5V
FS InVision	FS 5525VDG RIB	VT2PDG	Y	105	AC,P5V
FS InVision	FS 5835V RIB	VT2P	Y	108	AC,P5V
FS InVision	FS 5845P RIB	STXP	Y	108	AC,P5V
Golden Harvest	G03U08-D	D	Y	103	CM,C1,Vi,Va
Golden Harvest	G08U00-V	V	Y	108	CM,C1,Vi,Va
Integra	5443 DGVT2PRIB	VT2PDG	N	104	AC,P5V,St,SU
Integra	5584 PCE	PCE	Y*	105	AC,P5V,St,SU
Integra	5802 VT2PRIB	VT2P	Y	108	AC,P5V,St,SU
M & W Seeds	MW 103A VT2P	VT2P	Y	103	Treated
M & W Seeds	MW C104 PWR	PCE	Y	104	Treated
M & W Seeds	MW D108 PWR	PCE	Y	108	Treated
NK Brand	NK0367-AA	AA	Y	103	CM,C5,Vi,Va
NK Brand	NK0880-V	V	Y	108	CM,C1,Vi,Va
Partners Brand	PB 7928-VT2PRIB GC	VT2P	Y	109	AL2500
Pioneer	P0306AM GC	AM,AQ	Y	103	Lum
Pioneer	P0720AM CK	AM	Y	107	Lum, L1
Rob-See-Co	RC5768-VT2P GC	VT2P	Y	107	CM,C2,Vi,Va
Seed Consultants	SC1042Q	QR	Y	104	Lum, L1
Seed Consultants	SC1055PCE	PCE	Y	105	Lum, L1
Seed Consultants	SC1084AM	AM	Y	108	Lum, L1
Wyckoff	2336 TRE RIB	TRE	Y	103	AC,P2
Wyckoff	2432 TRE RIB	TRE	Y	105	AC,P2
Wyckoff	2515 VT2P RIB	VT2P	Y	107	AC,P2
Wyckoff	2574 TRE RIB	TRE	Y	108	AC,P2
Wyckoff	2632 SS RIB	STX	Y	108	AC,P5V

\* FIRST does not inspect products for refuge blend. N\* indicates the product was entered without a refuge component by the sponsoring seed company. Prior year entries may contain refuge blend.

## 2024 Corn - Ohio Northwest [ OHNW ]

### Full-Season Test Products (40 Total)

Company/Brand	Product/Brand	Technology	RIB	RM	Seed Treat.
Augusta	A2060	PCE	N*	110	CM,C2
Augusta	A2061-PWE	PCE	N	111	CM,C2
Augusta	A2462	3110	N	112	CM,C2
Ebberts	6883DGV2P RIB	VT2PDG	Y	112	Ebberts
Ebberts	7442PC	PCE	Y	112	Ebberts
Ebberts	7660PC	PCE	Y	110	Ebberts
Ebberts	7993PC	PCE	Y	112	Ebberts
FS InVision	FS 5947T RIB	TRE	Y	109	AC,P5V,EDC-EL
FS InVision	FS 6017V RIB	VT2P	Y	110	AC,P5V
FS InVision	FS 6133VDG RIB	VT2PDG	Y	111	AC,P5V
FS InVision	FS 6137PC RA	PCE	N	111	AC,P5V
FS InVision	FS 6245V RIB	VT2P	Y	112	AC,P5V,EDC-EL
Golden Harvest	G10L16-DV	DV	Y	110	AVC,C1,Vi,Va
Golden Harvest	G11V76-AA	AA	Y	111	AVC,C1,Vi,Va
Golden Harvest	G12S75-D	D	Y	112	AVC,C1,Vi,Va
Golden Harvest	G12U11-AA	AA	Y	112	CM,C1,Vi,Va
Great Heart	HT-6950PCE	PCE	N	109	F,I
Great Heart	HT-7151PCE	PCE	N	111	F,I
Great Heart	HT-7210VT2P	VT2P	N	112	F,I
Integra	5935PCE	PCE	Y	109	AC,P5V,St,SU
Integra	6061 SSRIB	STX	Y	110	AC,P5V,St,SU
Integra	6244PCE	PCE	N	112	NA
Integra	6274 VT2PRIB	VT2P	Y	112	NA
NK Brand	NK1056-V	V	Y	110	CM,C2,Vi,Va
NK Brand	NK1188-AA	AA	Y	111	CM,C5,Vi,Va
NK Brand	NK1228-AA	AA	Y	112	CM,C1,Vi,Va
Partners Brand	PB 8105D GC	D	N*	111	AL2500
Pioneer	P0720AM CK	AM	Y	107	Lum, L1
Pioneer	P0859AM GC	AM	Y	108	Lum
Pioneer	P1136AM GC	AM	Y	111	Lum, L1
Rob-See-Co	RC5929-VT2P GC	VT2P	Y	109	AC,P2
Rob-See-Co	RC6131-TRE GC	TRE	Y	111	AC,P2
Seed Consultants	SC1093AM	AM	Y	109	Lum, L1
Seed Consultants	SC1094PCE	PCE	Y	109	Lum, L1
Seed Consultants	SC1105PCE	PCE	Y	110	Lum, L1
Wyckoff	2667 DG VT2P RIB	VT2PDG	Y	111	AC,P2
Wyckoff	2676 TRE RIB	TRE	Y*	112	AC,P2
Wyckoff	2679 DG VT2P RIB	VT2PDG	Y	112	AC,P2
Wyckoff	2685 TRE RIB	TRE	Y	112	AC,P2
Wyckoff	2711 VT2P RIB	VT2P	Y	112	AC,P2

\* FIRST does not inspect products for refuge blend. N\* indicates the product was entered without a refuge component by the sponsoring seed company. Prior year entries may contain refuge blend.

## Footnotes and Abbreviations Descriptions

### Brand Footnotes

---

CK	Identifies a check product included in early- and full-season tests.
GC	Grower Comparison product included by FIRST when space permits.
^	Innotech™ brand seed is distributed by Rob-See-Co, LLC. Innotech™ is a trademark of Syngenta. Power Plus® brand seed is distributed by Burrus. Power Plus® is a registered trademark of Corteva Agriscience.

### Corn Technologies

---

3110	Agrisure® Viptera® 3110 (Vip, CB,LL,GT)
AA	Agrisure® Above (CB,HX,LL,GT), formerly Agrisure® 3120
AM	Optimum® AcreMax®
AQ	Optimum® AQUAmax®
D	Duracade™ (CB,HX,RW,RW2,LL,GT), formerly Agrisure Duracade® 5122
DV	DuracadeViptera™ (Vip,CB,HX,RW,RW2,LL,GT), formerly Agrisure Duracade® 5222
PCE	PowerCore® Enlist®
QR	Qrome®
STX	SmartStax®
STXP	SmartStax® Pro with RNAi Technology
TRE	Trecepta®
V	Viptera™ (Vip,CB,HX,LL,GT), formerly Agrisure Viptera® 3220
VT2P	VT Double PRO®
VT2PDG	DroughtGard® with VT Double PRO®

NOTE: The refuge component genetics may vary in a refuge blend seed product.

### Corn Seed Treatments\*

---

NA	Not Available
AC,P2	Acceleron® 250
AC,P5V	Acceleron® Poncho 500/Votivo
AC,P5V,EDC-EL	Acceleron® ELITE Poncho 500/Votivo with Enhanced Disease Control
AC,P5V,St,SU	Acceleron® Poncho 500/Votivo, Stamina, StepUp
AL2500	Alert 2500, Surefire
AVC,C1,Vi,Va	Avicta® Complete 1250, Vibrance®, Vayantis®
CM,C1,Vi,Va	CruiserMaxx® 1250 with Vibrance, Vayantis®
CM,C2	CruiserMaxx® 250
CM,C2,Vi,Va	CruiserMaxx® 250 with Vibrance, Vayantis®
CM,C5,Vi,Va	CruiserMaxx® 500 with Vibrance, Vayantis®
Ebberts	Ebberts Complete Corn (Ebberts Field Seeds)
F,I	Fungicide, Insecticide
Lum	LumiGEN™ (Corteva Agriscience)
Lum, L1	LumiGEN, Lumisure 1250
Treated	Treated seed, unspecified

\* Seed treatments may include unspecified plant health promoting components.