

Test by: Southern MN FIRST New Richland, MN

2024 Corn Grain Top 30 Harvest Report

Red River Central North Dakota & Minnesota [RRCE]
BUFFALO, ND
Tim Berntson, Cass County, ND

All-Season Test 82 - 92 Day CRM
B2024RRCE18

Top 30 of 35 For Gross Income
(Sorted by Yield)
Average of (4) Replications

PREV. CROP/HERB: Soybeans / Authority Elite,
Liberty

SOIL DESCRIPTION: Hamerly-Tonka Complex loam,
moderately drained, non-
irrigated

SOIL CONDITION: Conventional W/ Fall Till, very
high P, very high K, 7.4 pH,
4.8% OM, 24.5 CEC

PEST MANAGEMENT: Force, Harness, Atrazine,
Armezon Pro, Stinger

FERTILITY - Applied N: 168 Spring, Sulfur 18

Applied N-P-K (units): 168-65-60

SEEDED - RATE - ROW: May 11 34.4 /A 30" spacing

HARVESTED - STAND: Oct 27 33.5 /A

TEST COMMENTS:

Planting conditions were excellent here. Tim told me that the growing season was very good for his corn. The only issue was that, even though many days of good sunshine occurred here, there was cloud cover much of the summer from wildfires in the western states. The corn in both plots was very healthy, and weed control was spotless, at harvest. Rainfall was very beneficial here all season, with drier conditions in September and October.

Company/Brand	Product/Brand	Technol.†	RM	Yield Bu/A ↓	Moisture %	Lodging %	Stand (x 1000)	Gross Income \$/Acre	Rank
Augusta	A2037 ↗	V	87	242.8	14.2	0	33.3	971	1
Channel	193-91VT2PRIB GC ↗	VT2P	93	241.9	14.3	0	33.7	968	2
Thunder	T6389 VT2P ↗	VT2P	89	241.8	13.8	0	34.4	967	3
Dairyland	DS-3159AM ↗	AM	91	240.0	15.1	0	33.7	959	4
Pioneer	P9211AM GC ↗	AM	92	239.9	15.1	0	33.3	959	5
NK Brand	NK8711-V ↗	V	87	239.4	14.7	0	33.7	958	6
Thunder	T6592 VT2P ↗	VT2P	92	237.3	14.3	0	34.0	949	7
NK Brand	NK9231-AA ↗	AA	92	234.1	14.7	0	34.0	936	8
Golden Harvest	G87U44-V ↗	V	87	233.8	14.7	2	33.7	935	9
Golden Harvest	G91V51-DV ↗	DV	91	233.6	15.9	0	32.6	926	11
Thunder	T6591 PC ↗	PCE	91	232.4	14.3	1	33.3	930	10
Thunder	T6490 VT2P ↗	VT2P	90	228.3	14.2	0	34.0	913	12
Dairyland	DS-2847PCE ↗	PCE	88	228.2	13.9	0	33.7	913	13
Enestvedt	E612RR ↗	RR2	92	227.4	14.8	0	34.0	909	14
Augusta	A2140-AA ↗	AA	90	227.3	14.2	1	33.3	909	15
Pioneer	P9193AM GC ↗	AM	91	227.0	14.2	0	33.7	908	16
Proseed	2392 VT2PRIB GC ↗	VT2P	92	226.6	14.8	1	33.0	906	17
Golden Harvest	G92A51-AA ↗	AA	92	225.3	14.9	0	34.0	901	18
Renk	RK296AA ↗	AA	89	224.7	14.7	0	32.6	899	19
NK Brand	NK9021-D ↗	D	90	223.4	14.3	0	34.0	893	20
Renk	RK304VT2P ↗	VT2P	90	222.9	14.0	0	32.9	891	21
Proseed	2488 VT2PRIB GC ↗	VT2P	88	219.0	14.3	0	33.0	876	22
Thunder	T6485 PC ↗	PCE	85	217.4	13.4	0	33.7	870	23
Renk	RK297VT2P ↗	VT2P	89	216.4	14.1	0	33.7	866	24
Thunder	T6588 AV ↗	V	88	214.2	14.8	1	33.7	857	25
Renk	RK405SSTX ↗	STX	91	214.1	14.4	0	33.3	856	26
Thunder	T6983 VT2P ↗	VT2P	83	210.9	13.5	0	34.4	843	27
Thunder	T6587 PC ↗	PCE	87	209.2	13.8	0	32.9	837	28
Renk	RK258PCE ↗	PCE	85	207.8	14.0	0	34.0	831	29
Golden Harvest	G85B04-AA ↗	AA	85	207.1	13.9	0	33.7	828	30

Mark Querna

mark.querna@firstseedtests.com, (507) 380-9920

Averages = **222.6** **14.3** **0** **33.5** **890**

LSD (0.10) = 10.2 0.4 ns

LSD (0.25) = 5.3 0.2 ns

C.V. = 5.0

Historic yield: 188.83 bu/a, 3 yr(s)

Yield & Income Factors: Base Moisture = 15.0% Shrink = 1.3 Drying = \$0.04 Prices: GMO = \$4.00

Report Date: 10/28/2024

† See last page for abbreviation descriptions. Dark colored row identifies the check product found in early- and full-season tests. **Bold** yields are significantly above test average by LSD(0.10). **Italicized** brands exceed the grain moisture limit for this test. **ns** = column values not significantly different. ↗ Links to full product yield results at www.firstseedtests.com

©2024, All rights reserved to Farmers' Independent Research of Seed Technologies, LLC.

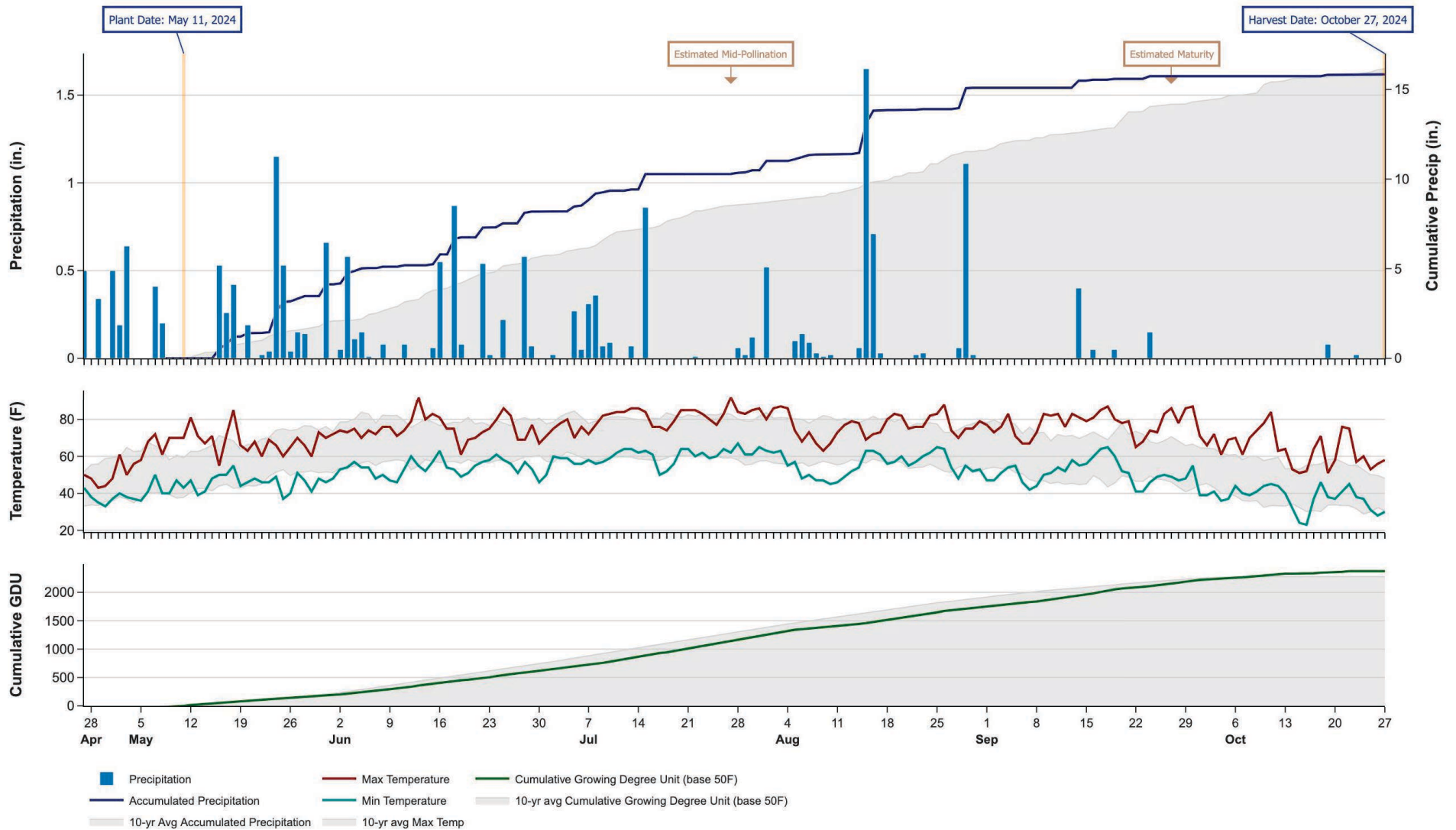
Additional reports available at www.firstseedtests.com

2024 Corn - Red River Central North Dakota & Minnesota [RRCE]

Weather Conditions Summary at BUFFALO, ND

Weather Data Retrieved: 10/28/2024

Monthly Total	Apr*	May	Jun	Jul	Aug	Sep	Oct*	Total
Precip (in) (Diff)	0.8 0.5 (+0.4)	6.1 3.0 (+3.1)	4.0 3.7 (+0.4)	2.3 3.0 (-0.7)	4.6 2.9 (+1.7)	0.7 2.7 (-2.1)	0.1 1.9 (-1.8)	18.6 17.6 (+1.1)
GDU Avg (Diff)	0 0 (0)	238 244 (-6)	435 538 (-103)	624 620 (+3)	505 533 (-28)	468 341 (+126)	164 33 (+131)	2434 2312 (+121)



* First monthly total starts on the date 14 days prior to planting and final monthly total ends on the harvest date.

Note: Weather information from PRISM Climate Group. Data may be revised by the provider after retrieval. FIRST will not revise or update reports to reflect any weather data changes. For information purposes only.

2024 Corn - Red River Central North Dakota & Minnesota [RRCE]

All-Season Test Products (35 Total)

Company/Brand	Product/Brand	Technology	RIB	RM	Seed Treat.
Augusta	A2037	V	N	87	CM,C2
Augusta	A2140-AA	AA	N	90	CM,C2
Channel	193-91VT2PRIB GC	VT2P	Y	93	AC,P5V,EDC-B
Dairyland	DS-2620AM	AM	Y	86	Lum, L1
Dairyland	DS-2847PCE	PCE	Y	88	Lum, L1
Dairyland	DS-3159AM	AM	Y	91	Lum
Enestvedt	E612RR	RR2	N	92	CM,C2,Vi
Golden Harvest	G85B04-AA	AA	Y	85	CM,C5,Vi,Va
Golden Harvest	G87U44-V	V	Y	87	CM,C1,Vi,Va
Golden Harvest	G91V51-DV	DV	Y	91	AVC,C5,Vi,Va
Golden Harvest	G92A51-AA	AA	Y	92	CM,C5,Vi,Va
NK Brand	NK8558-AA	AA	Y	85	CM,C5,Vi,Va
NK Brand	NK8711-V	V	Y	87	CM,C1,Vi,Va
NK Brand	NK9021-D	D	Y	90	CM,C5,Vi,Va
NK Brand	NK9231-AA	AA	Y	92	CM,C5,Vi,Va
Pioneer	P9193AM GC	AM	Y	91	Lum
Pioneer	P9211AM GC	AM	Y	92	Lum
Proseed	2392 VT2PRIB GC	VT2P	Y	92	NA
Proseed	2488 VT2PRIB GC	VT2P	Y*	88	NA
Renk	RK258PCE	PCE	N	85	Lum
Renk	RK261VT2P	VT2P	Y	86	AC,P2
Renk	RK296AA	AA	Y	89	CM,C2
Renk	RK297VT2P	VT2P	Y*	89	AC,P2
Renk	RK304VT2P	VT2P	N	90	AC,P5V,EDC-EL
Renk	RK405SSTX	STX	N	91	AC,P5V,EDC-EL
Thunder	T6185 VT2P	VT2P	Y	85	AC,P2
Thunder	T6389 VT2P	VT2P	Y	89	AC,P2
Thunder	T6485 PC	PCE	Y	85	AC,P2
Thunder	T6490 VT2P	VT2P	Y	90	AC,P2
Thunder	T6587 PC	PCE	Y	87	F,I
Thunder	T6588 AV	V	Y	88	F,I
Thunder	T6591 PC	PCE	Y	91	F,I
Thunder	T6592 VT2P	VT2P	Y	92	F,I
Thunder	T6983 VT2P	VT2P	Y	83	F,I
Thunder	T6987 VT2P	VT2P	Y	87	F,I

* FIRST does not inspect products for refuge blend. N* indicates the product was entered without a refuge component by the sponsoring seed company. Prior year entries may contain refuge blend.

Footnotes and Abbreviations Descriptions

Brand Footnotes

CK	Identifies a check product included in early- and full-season tests.
GC	Grower Comparison product included by FIRST when space permits.
^	Innotech™ brand seed is distributed by Rob-See-Co, LLC. Innotech™ is a trademark of Syngenta. Power Plus® brand seed is distributed by Burrus. Power Plus® is a registered trademark of Corteva Agriscience.

Corn Technologies

AA	Agrisure® Above (CB,HX,LL,GT), formerly Agrisure® 3120
AM	Optimum® AcreMax®
D	Duracade™ (CB,HX,RW,RW2,LL,GT), formerly Agrisure Duracade® 5122
DV	DuracadeViptera™ (Vip,CB,HX,RW,RW2,LL,GT), formerly Agrisure Duracade® 5222
PCE	PowerCore® Enlist®
RR2	Roundup Ready® 2 Corn
STX	SmartStax®
V	Viptera™ (Vip,CB,HX,LL,GT), formerly Agrisure Viptera® 3220
VT2P	VT Double PRO®

NOTE: The refuge component genetics may vary in a refuge blend seed product.

Corn Seed Treatments*

NA	Not Available
AC,P2	Acceleron® 250
AC,P5V,EDC-B	Acceleron® BASIC Poncho 500/Votivo with Enhanced Disease Control
AC,P5V,EDC-EL	Acceleron® ELITE Poncho 500/Votivo with Enhanced Disease Control
AVC,C5,Vi,Va	Avicta Complete 500, Vibrance, Vayantis
CM,C1,Vi,Va	CruiserMaxx® 1250 with Vibrance, Vayantis®
CM,C2	CruiserMaxx® 250
CM,C2,Vi	CruiserMaxx® 250 with Vibrance
CM,C5,Vi,Va	CruiserMaxx® 500 with Vibrance, Vayantis®
F,I	Fungicide, Insecticide
Lum	LumiGEN™ (Corteva Agriscience)
Lum, L1	LumiGEN, Lumisure 1250

* Seed treatments may include unspecified plant health promoting components.