

Test by: Southern MN FIRST New Richland, MN

## 2024 Corn Grain Top 30 Harvest Report

Red River Central North Dakota & Minnesota [RRCE]

COLGATE, ND

Brooks Whitmore, Steele County, ND

**All-Season Test** 82 - 92 Day CRM  
B2024RRCE19

**Top 30 of 35** For Gross Income  
(Sorted by Yield)  
Average of (4) Replications

**PREV. CROP/HERB:** Corn / Dual, Laudis, Atrazine

**SOIL DESCRIPTION:** Barnes-Svea loam, mod. well drained, non-irrigated

**SOIL CONDITION:** Conventional W/ Fall Till, very high P, very high K, 5.7 pH, 5.3% OM, 20.9 CEC

**PEST MANAGEMENT:** Force, Harness Xtra, Laudis, Powermax

**FERTILITY - Applied N:** 177 Spring, Sulfur 25

**Applied N-P-K (units):** 177-30-25

**SEEDED - RATE - ROW:** May 11 34.4 /A 30" spacing

**HARVESTED - STAND:** Oct 28 33.2 /A

### TEST COMMENTS:

Soil conditions were great here at planting. Brooks told me the growing season was very good here all year. Rainfall was above average, but not excessive. The field surrounding the plot averaged 190 bpa. The hybrids in this plot were above average in height, were healthy, and showed very little lodging. Rainfall was plentiful through July, and warm and dry weather in September and October helped this crop to physiological maturity. This is a second-year corn-on-corn site.

Company/Brand	Product/Brand	Technol.†	RM	Yield Bu/A ↓	Moisture %	Lodging %	Stand (x 1000)	Gross Income \$/Acre	Rank
Golden Harvest	G92A51-AA ↗	AA	92	<b>278.0</b>	18.7	1	33.3	1071	1
Augusta	A2140-AA ↗	AA	90	<b>273.1</b>	18.3	0	34.4	1056	2
NK Brand	NK9231-AA ↗	AA	92	<b>268.7</b>	18.7	0	34.4	1036	3
Golden Harvest	G87U44-V ↗	V	87	<b>253.5</b>	17.3	0	33.3	991	4
Renk	RK296AA ↗	AA	89	<b>250.9</b>	18.8	0	33.3	965	6
Thunder	T6588 AV ↗	V	88	248.3	17.8	0	32.9	965	7
NK Brand	NK9021-D ↗	D	90	247.5	17.4	0	34.0	966	5
Thunder	T6591 PC ↗	PCE	91	246.9	17.6	0	33.3	962	8
Golden Harvest	G85B04-AA ↗	AA	85	246.0	17.2	0	34.0	962	9
NK Brand	NK8711-V ↗	V	87	245.6	17.2	0	32.9	961	10
Channel	193-91VT2PRIB GC ↗	VT2P	93	245.6	17.4	0	33.3	959	11
Dairyland	DS-3159AM ↗	AM	91	243.3	17.7	0	34.0	947	14
Augusta	A2037 ↗	V	87	242.8	17.1	0	33.7	951	13
Dairyland	DS-2620AM ↗	AM	86	242.4	16.7	0	32.2	953	12
Proseed	2392 VT2PRIB GC ↗	VT2P	92	240.9	17.9	0	32.6	936	16
Thunder	T6389 VT2P ↗	VT2P	89	239.5	17.0	0	33.3	939	15
Pioneer	P9211AM GC ↗	AM	92	238.8	18.1	0	32.6	926	18
Proseed	2488 VT2PRIB GC ↗	VT2P	88	237.5	16.9	0	34.0	932	17
Dairyland	DS-2847PCE ↗	PCE	88	233.8	16.8	0	32.6	918	19
Renk	RK304VT2P ↗	VT2P	90	232.5	17.2	0	33.0	910	21
Thunder	T6490 VT2P ↗	VT2P	90	231.7	16.5	0	34.4	913	20
Thunder	T6592 VT2P ↗	VT2P	92	231.0	17.5	0	32.9	901	23
NK Brand	NK8558-AA ↗	AA	85	230.8	16.9	1	33.7	906	22
Pioneer	P9193AM GC ↗	AM	91	226.6	17.0	0	32.9	888	24
Thunder	T6587 PC ↗	PCE	87	224.9	16.9	0	32.9	882	25
Enestvedt	E612RR ↗	RR2	92	224.1	18.2	0	33.7	868	27
Renk	RK405SSTX ↗	STX	91	221.7	17.9	0	32.6	861	30
Renk	RK258PCE ↗	PCE	85	221.4	16.7	0	33.7	871	26
Thunder	T6983 VT2P ↗	VT2P	83	219.1	15.9	0	33.0	868	28
Thunder	T6485 PC ↗	PCE	85	219.0	16.0	1	33.7	867	29

Mark Querna

mark.querna@firstseedtests.com, (507) 380-9920

Averages = **235.5** **17.3** **0** **33.2** **920**

LSD (0.10) = 14.1 0.6 ns

LSD (0.25) = 7.4 0.3 ns

C.V. = 6.6

Historic yield: new site

**Yield & Income Factors:** Base Moisture = 15.0% Shrink = 1.3 Drying = \$0.04 Prices: GMO = \$4.00

Report Date: 10/28/2024

† See last page for abbreviation descriptions. Dark colored row identifies the check product found in early- and full-season tests. **Bold** yields are significantly above test average by LSD(0.10). **Italicized** brands exceed the grain moisture limit for this test. **ns** = column values not significantly different. ↗ Links to full product yield results at www.firstseedtests.com

©2024, All rights reserved to Farmers' Independent Research of Seed Technologies, LLC.

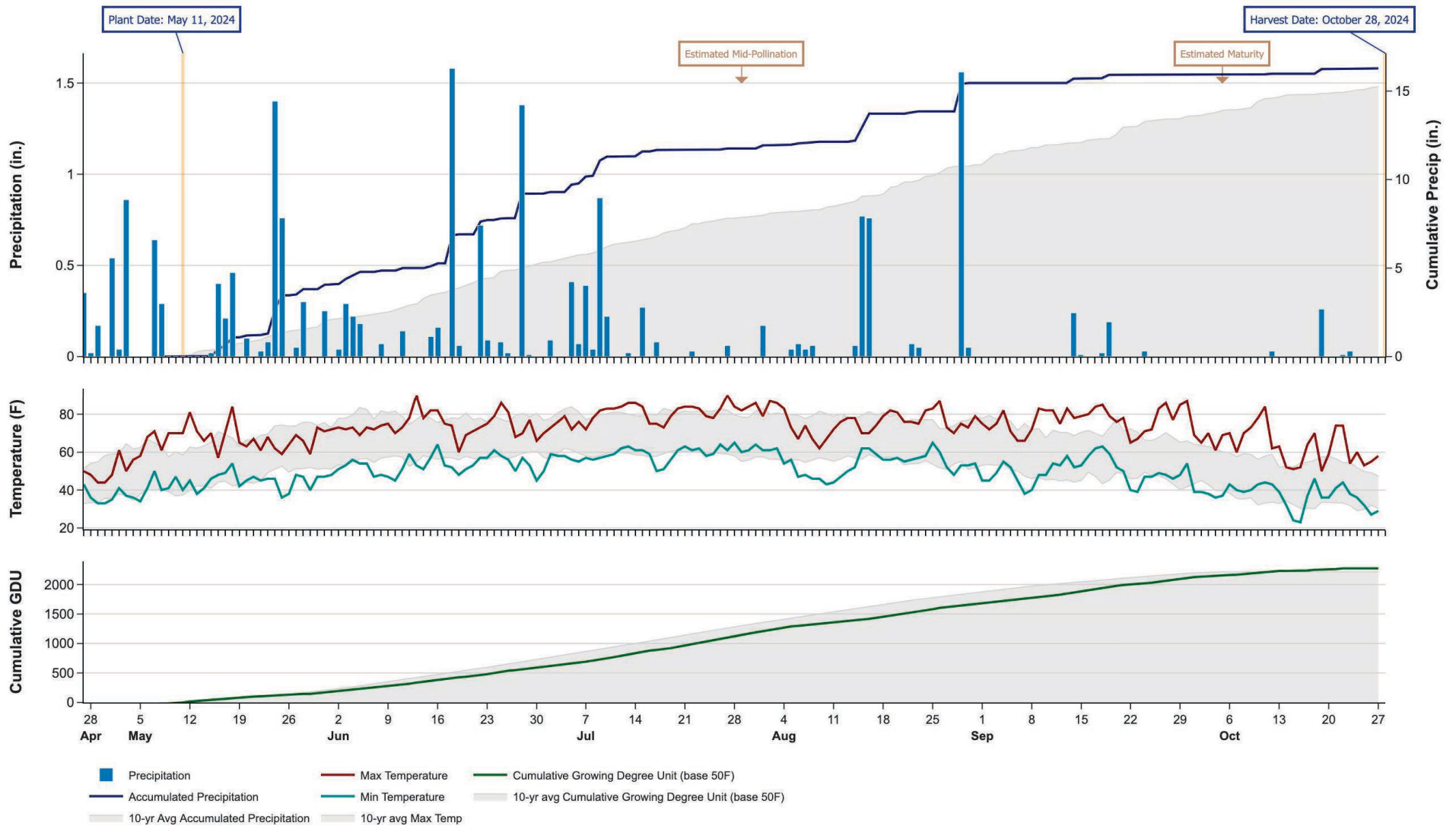
Additional reports available at [www.firstseedtests.com](http://www.firstseedtests.com)

# 2024 Corn - Red River Central North Dakota & Minnesota [ RRCE ]

## Weather Conditions Summary at COLGATE, ND

Weather Data Retrieved: 10/28/2024

Monthly Total	Apr*	May	Jun	Jul	Aug	Sep	Oct*	Total
Precip (in)   (Diff)	0.5   0.4 (+0.1)	6.4   3.0 (+3.5)	5.2   3.2 (+2.0)	2.5   2.7 (-0.2)	3.7   2.9 (+0.8)	0.5   2.7 (-2.2)	0.3   1.7 (-1.3)	19.2   16.6 (+2.6)
GDU   Avg (Diff)	0   0 (0)	227   236 (-9)	418   525 (-107)	604   610 (-6)	482   524 (-42)	445   328 (+116)	158   26 (+131)	2334   2252 (+81)



\* First monthly total starts on the date 14 days prior to planting and final monthly total ends on the harvest date.

Note: Weather information from PRISM Climate Group. Data may be revised by the provider after retrieval. FIRST will not revise or update reports to reflect any weather data changes. For information purposes only.

## 2024 Corn - Red River Central North Dakota & Minnesota [ RRCE ]

### All-Season Test Products (35 Total)

Company/Brand	Product/Brand	Technology	RIB	RM	Seed Treat.
Augusta	A2037	V	N	87	CM,C2
Augusta	A2140-AA	AA	N	90	CM,C2
Channel	193-91VT2PRIB GC	VT2P	Y	93	AC,P5V,EDC-B
Dairyland	DS-2620AM	AM	Y	86	Lum, L1
Dairyland	DS-2847PCE	PCE	Y	88	Lum, L1
Dairyland	DS-3159AM	AM	Y	91	Lum
Enestvedt	E612RR	RR2	N	92	CM,C2,Vi
Golden Harvest	G85B04-AA	AA	Y	85	CM,C5,Vi,Va
Golden Harvest	G87U44-V	V	Y	87	CM,C1,Vi,Va
Golden Harvest	G91V51-DV	DV	Y	91	AVC,C5,Vi,Va
Golden Harvest	G92A51-AA	AA	Y	92	CM,C5,Vi,Va
NK Brand	NK8558-AA	AA	Y	85	CM,C5,Vi,Va
NK Brand	NK8711-V	V	Y	87	CM,C1,Vi,Va
NK Brand	NK9021-D	D	Y	90	CM,C5,Vi,Va
NK Brand	NK9231-AA	AA	Y	92	CM,C5,Vi,Va
Pioneer	P9193AM GC	AM	Y	91	Lum
Pioneer	P9211AM GC	AM	Y	92	Lum
Proseed	2392 VT2PRIB GC	VT2P	Y	92	NA
Proseed	2488 VT2PRIB GC	VT2P	Y*	88	NA
Renk	RK258PCE	PCE	N	85	Lum
Renk	RK261VT2P	VT2P	Y	86	AC,P2
Renk	RK296AA	AA	Y	89	CM,C2
Renk	RK297VT2P	VT2P	Y*	89	AC,P2
Renk	RK304VT2P	VT2P	N	90	AC,P5V,EDC-EL
Renk	RK405SSTX	STX	N	91	AC,P5V,EDC-EL
Thunder	T6185 VT2P	VT2P	Y	85	AC,P2
Thunder	T6389 VT2P	VT2P	Y	89	AC,P2
Thunder	T6485 PC	PCE	Y	85	AC,P2
Thunder	T6490 VT2P	VT2P	Y	90	AC,P2
Thunder	T6587 PC	PCE	Y	87	F,I
Thunder	T6588 AV	V	Y	88	F,I
Thunder	T6591 PC	PCE	Y	91	F,I
Thunder	T6592 VT2P	VT2P	Y	92	F,I
Thunder	T6983 VT2P	VT2P	Y	83	F,I
Thunder	T6987 VT2P	VT2P	Y	87	F,I

\* FIRST does not inspect products for refuge blend. N\* indicates the product was entered without a refuge component by the sponsoring seed company. Prior year entries may contain refuge blend.

## Footnotes and Abbreviations Descriptions

### Brand Footnotes

---

CK	Identifies a check product included in early- and full-season tests.
GC	Grower Comparison product included by FIRST when space permits.
^	Innotech™ brand seed is distributed by Rob-See-Co, LLC. Innotech™ is a trademark of Syngenta. Power Plus® brand seed is distributed by Burrus. Power Plus® is a registered trademark of Corteva Agriscience.

### Corn Technologies

---

AA	Agrisure® Above (CB,HX,LL,GT), formerly Agrisure® 3120
AM	Optimum® AcreMax®
D	Duracade™ (CB,HX,RW,RW2,LL,GT), formerly Agrisure Duracade® 5122
DV	DuracadeViptera™ (Vip,CB,HX,RW,RW2,LL,GT), formerly Agrisure Duracade® 5222
PCE	PowerCore® Enlist®
RR2	Roundup Ready® 2 Corn
STX	SmartStax®
V	Viptera™ (Vip,CB,HX,LL,GT), formerly Agrisure Viptera® 3220
VT2P	VT Double PRO®

NOTE: The refuge component genetics may vary in a refuge blend seed product.

### Corn Seed Treatments\*

---

NA	Not Available
AC,P2	Acceleron® 250
AC,P5V,EDC-B	Acceleron® BASIC Poncho 500/Votivo with Enhanced Disease Control
AC,P5V,EDC-EL	Acceleron® ELITE Poncho 500/Votivo with Enhanced Disease Control
AVC,C5,Vi,Va	Avicta Complete 500, Vibrance, Vayantis
CM,C1,Vi,Va	CruiserMaxx® 1250 with Vibrance, Vayantis®
CM,C2	CruiserMaxx® 250
CM,C2,Vi	CruiserMaxx® 250 with Vibrance
CM,C5,Vi,Va	CruiserMaxx® 500 with Vibrance, Vayantis®
F,I	Fungicide, Insecticide
Lum	LumiGEN™ (Corteva Agriscience)
Lum, L1	LumiGEN, Lumisure 1250

\* Seed treatments may include unspecified plant health promoting components.