

Test by: Southern MN FIRST New Richland, MN

## 2024 Corn Grain Top 30 Harvest Report

Red River South North Dakota & Minnesota [RRSO]  
BUFFALO, ND  
Tim Berntson, Cass County, ND

<b>All-Season Test</b>	85 - 95 Day CRM B2024RRSO13
<b>Top 30 of 40</b>	For Gross Income (Sorted by Yield) Average of (4) Replications
<b>PREV. CROP/HERB:</b>	Soybeans / Authority Elite, Liberty
<b>SOIL DESCRIPTION:</b>	Hamerly-Tonka loam, moderately drained, non- irrigated
<b>SOIL CONDITION:</b>	Conventional W/ Fall Till, very high P, very high K, 7.6 pH, 4.6% OM, 25.1 CEC
<b>PEST MANAGEMENT:</b>	Force, Harness, Atrazine, Armezon Pro, Stinger
<b>FERTILITY - Applied N:</b>	168 Spring, Sulfur 18
<b>Applied N-P-K (units):</b>	168-65-60
<b>SEEDED - RATE - ROW:</b>	May 11 34.4 /A 30" spacing
<b>HARVESTED - STAND:</b>	Oct 27 33.5 /A

### TEST COMMENTS:

Planting conditions were excellent here. Tim told me that the growing season was very good for his corn. The only issue was that, even though many days of good sunshine occurred here, there was cloud cover much of the summer from wildfires in the western states. The corn in both plots was very healthy, and weed control was spotless, at harvest. Rainfall was very beneficial here all season, with drier conditions in September and October.

Company/Brand	Product/Brand	Technol.†	RM	Yield Bu/A ↓	Moisture %	Lodging %	Stand (x 1000)	Gross Income \$/Acre	Rank
Golden Harvest	G94U63-V ↗	V	94	<b>259.1</b>	15.7	1	32.6	1029	1
Thunder	T6396 VT2P ↗	VT2P	95	<b>258.0</b>	15.3	0	33.7	1029	2
NK Brand	NK9400-V ↗	V	94	<b>252.6</b>	16.0	1	33.3	1001	4
Golden Harvest	G87U44-V ↗	V	87	<b>251.3</b>	15.1	0	34.4	1004	3
Renk	RK519VT4P ↗	VT4P	95	<b>249.6</b>	14.9	0	34.0	998	5
Thunder	T6591 PC ↗	PCE	91	<b>248.7</b>	14.5	0	32.9	995	6
Thunder	T6294 VT2P ↗	VT2PDG	94	<b>247.9</b>	15.8	0	34.0	983	8
Pioneer	P9492AM GC ↗	AM	94	<b>246.3</b>	15.0	0	33.3	985	7
NK Brand	NK9231-AA ↗	AA	92	245.3	15.5	0	33.3	976	9
Renk	RK485DGV2P ↗	VT2PDG	94	244.7	15.8	0	33.7	971	11
Augusta	A2244 ↗	DV	94	244.6	16.4	1	34.0	965	12
Renk	RK456VT2P ↗	VT2P	94	244.3	15.5	0	34.0	972	10
Dyna-Gro	D34SS93RIB GC ↗	STX	94	241.4	16.9	0	34.0	947	19
Renk	RK296AA ↗	AA	89	240.8	15.2	0	32.9	962	13
Thunder	T6695 VT2P ↗	VT2P	95	240.7	15.4	0	33.7	959	14
Jacobsen	JS9491VT2P ↗	VT2P	95	240.2	15.2	0	32.9	959	15
Renk	RK444VT2P ↗	VT2P	93	239.6	15.0	0	33.7	958	16
Thunder	T6490 VT2P ↗	VT2P	90	238.8	14.1	0	33.7	955	17
Dairyland	DS-3477AM ↗	AM	94	238.0	15.6	0	32.6	946	20
Enestvedt	E612RR ↗	RR2	92	237.6	15.2	0	33.3	949	18
Augusta	A2541-DV ↗	DV	91	237.1	15.8	0	32.9	941	22
Jacobsen	JS9542DGV2P ↗	VT2PDG	95	236.9	15.5	0	34.4	943	21
Thunder	T6588 AV ↗	V	88	235.2	15.0	0	34.4	941	23
Dairyland	DS-2847PCE ↗	PCE	88	233.3	14.1	0	33.7	933	24
Golden Harvest	G91V51-DV ↗	DV	91	232.4	16.5	0	33.3	915	28
Augusta	A2140-AA ↗	AA	90	232.3	15.6	0	33.7	924	26
Thunder	T6592 VT2P ↗	VT2P	92	231.3	14.7	0	32.6	925	25
Augusta	A2037 ↗	V	87	230.9	15.0	0	33.7	923	27
Pioneer	P9211AM GC ↗	AM	92	230.3	15.7	0	32.6	915	29
NK Brand	NK8711-V ↗	V	87	228.3	15.3	0	32.6	910	30

Mark Querna

mark.querna@firstseedtests.com, (507) 380-9920

Averages = **235.1** **15.1** **0** **33.5** **937**

LSD (0.10) = 10.8 0.5 ns

LSD (0.25) = 5.7 0.3 ns

C.V. = 5.0

Historic yield: 188.83 bu/a, 3 yr(s)

**Yield & Income Factors:** Base Moisture = 15.0% Shrink = 1.3 Drying = \$0.04 Prices: GMO = \$4.00

Report Date: 10/28/2024

† See last page for abbreviation descriptions. Dark colored row identifies the check product found in early- and full-season tests. **Bold** yields are significantly above test average by LSD(0.10). **Italicized** brands exceed the grain moisture limit for this test. **ns** = column values not significantly different. ↗ Links to full product yield results at [www.firstseedtests.com](http://www.firstseedtests.com)

©2024, All rights reserved to Farmers' Independent Research of Seed Technologies, LLC.

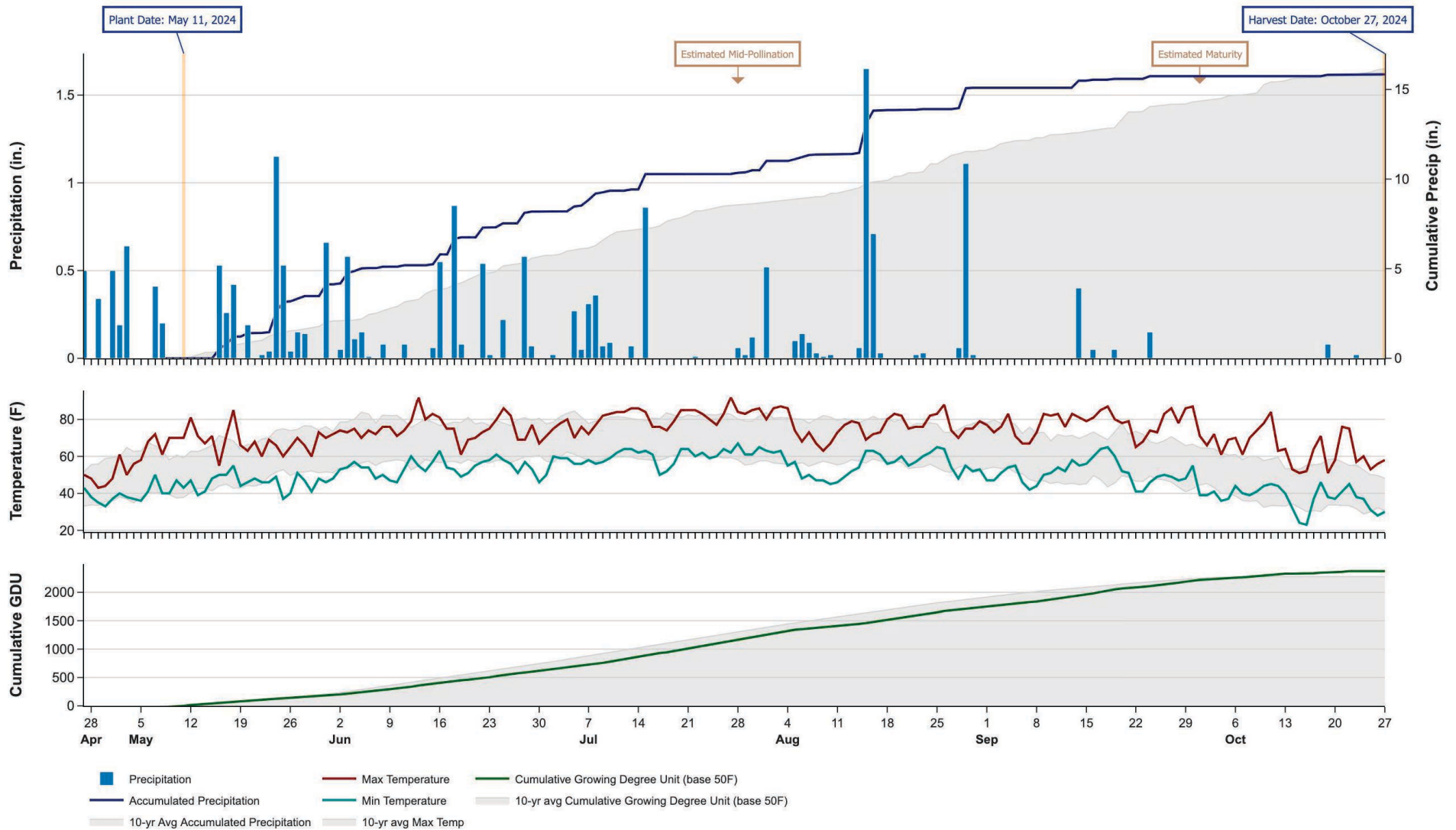
Additional reports available at [www.firstseedtests.com](http://www.firstseedtests.com)

# 2024 Corn - Red River South North Dakota & Minnesota [ RRSO ]

## Weather Conditions Summary at BUFFALO, ND

Weather Data Retrieved: 10/28/2024

Monthly Total	Apr*	May	Jun	Jul	Aug	Sep	Oct*	Total
Precip (in)   (Diff)	0.8   0.5 (+0.4)	6.1   3.0 (+3.1)	4.0   3.7 (+0.4)	2.3   3.0 (-0.7)	4.6   2.9 (+1.7)	0.7   2.7 (-2.1)	0.1   1.9 (-1.8)	18.6   17.6 (+1.1)
GDU   Avg (Diff)	0   0 (0)	238   244 (-6)	435   538 (-103)	624   620 (+3)	505   533 (-28)	468   341 (+126)	164   33 (+131)	2434   2312 (+121)



\* First monthly total starts on the date 14 days prior to planting and final monthly total ends on the harvest date.

Note: Weather information from PRISM Climate Group. Data may be revised by the provider after retrieval. FIRST will not revise or update reports to reflect any weather data changes. For information purposes only.

## 2024 Corn - Red River South North Dakota & Minnesota [ RRSO ]

### All-Season Test Products (40 Total)

Company/Brand	Product/Brand	Technology	RIB	RM	Seed Treat.
Augusta	A2037	V	N	87	CM,C2
Augusta	A2140-AA	AA	N	90	CM,C2
Augusta	A2244	DV	Y	94	CM,C2
Augusta	A2541-DV	DV	Y	91	CM,C2
Dairyland	DS-2620AM	AM	Y	86	Lum, L1
Dairyland	DS-2847PCE	PCE	Y	88	Lum, L1
Dairyland	DS-3477AM	AM	Y	94	Lum
Dyna-Gro	D34SS93RIB GC	STX	Y	94	AC,P5V
Enestvedt	E612RR	RR2	N	92	CM,C2,Vi
Golden Harvest	G85B04-AA	AA	Y	85	CM,C5,Vi,Va
Golden Harvest	G87U44-V	V	Y	87	CM,C1,Vi,Va
Golden Harvest	G91V51-DV	DV	Y	91	AVC,C5,Vi,Va
Golden Harvest	G94U63-V	V	Y	94	CM,C5,Vi,Va
Jacobsen	JS9283SS	STX	Y	92	Treated
Jacobsen	JS9491VT2P	VT2P	Y	95	Treated
Jacobsen	JS9542DGVT2P	VT2PDG	Y	95	Treated
NK Brand	NK8558-AA	AA	Y	85	CM,C5,Vi,Va
NK Brand	NK8711-V	V	Y	87	CM,C1,Vi,Va
NK Brand	NK9021-D	D	Y	90	CM,C5,Vi,Va
NK Brand	NK9231-AA	AA	Y	92	CM,C5,Vi,Va
NK Brand	NK9400-V	V	Y	94	CM,C1,Vi,Va
Pioneer	P9193AM GC	AM	Y	91	Lum
Pioneer	P9211AM GC	AM	Y	92	Lum
Pioneer	P9492AM GC	AM	Y	94	Lum
Renk	RK296AA	AA	Y	89	CM,C2
Renk	RK304VT2P	VT2P	N	90	AC,P5V,EDC-EL
Renk	RK444VT2P	VT2P	Y*	93	AC,P2
Renk	RK456VT2P	VT2P	N	94	AC,P5V,EDC-EL
Renk	RK485DGVT2P	VT2PDG	Y*	94	AC,P2
Renk	RK519VT4P	VT4P	N	95	AC,P5V,EDC-EL
Thunder	T6294 VT2P	VT2PDG	Y	94	AC,P2
Thunder	T6389 VT2P	VT2P	Y	89	AC,P2
Thunder	T6396 VT2P	VT2P	Y	95	AC,P2
Thunder	T6490 VT2P	VT2P	Y	90	AC,P2
Thunder	T6587 PC	PCE	Y	87	F,I
Thunder	T6588 AV	V	Y	88	F,I
Thunder	T6591 PC	PCE	Y	91	F,I
Thunder	T6592 VT2P	VT2P	Y	92	F,I
Thunder	T6695 VT2P	VT2P	Y	95	F,I
Thunder	T6987 VT2P	VT2P	Y	87	F,I

\* FIRST does not inspect products for refuge blend. N\* indicates the product was entered without a refuge component by the sponsoring seed company. Prior year entries may contain refuge blend.

## Footnotes and Abbreviations Descriptions

### Brand Footnotes

---

CK	Identifies a check product included in early- and full-season tests.
GC	Grower Comparison product included by FIRST when space permits.
^	Innotech™ brand seed is distributed by Rob-See-Co, LLC. Innotech™ is a trademark of Syngenta. Power Plus® brand seed is distributed by Burrus. Power Plus® is a registered trademark of Corteva Agriscience.

### Corn Technologies

---

AA	Agrisure® Above (CB,HX,LL,GT), formerly Agrisure® 3120
AM	Optimum® AcreMax®
D	Duracade™ (CB,HX,RW,RW2,LL,GT), formerly Agrisure Duracade® 5122
DV	DuracadeViptera™ (Vip,CB,HX,RW,RW2,LL,GT), formerly Agrisure Duracade® 5222
PCE	PowerCore® Enlist®
RR2	Roundup Ready® 2 Corn
STX	SmartStax®
V	Viptera™ (Vip,CB,HX,LL,GT), formerly Agrisure Viptera® 3220
VT2P	VT Double PRO®
VT2PDG	DroughtGard® with VT Double PRO®
VT4P	VT4Pro™ with RNAi Technology

NOTE: The refuge component genetics may vary in a refuge blend seed product.

### Corn Seed Treatments\*

---

NA	Not Available
AC,P2	Acceleron® 250
AC,P5V	Acceleron® Poncho 500/Votivo
AC,P5V,EDC-EL	Acceleron® ELITE Poncho 500/Votivo with Enhanced Disease Control
AVC,C5,Vi,Va	Avicta Complete 500, Vibrance, Vayantis
CM,C1,Vi,Va	CruiserMaxx® 1250 with Vibrance, Vayantis®
CM,C2	CruiserMaxx® 250
CM,C2,Vi	CruiserMaxx® 250 with Vibrance
CM,C5,Vi,Va	CruiserMaxx® 500 with Vibrance, Vayantis®
F,I	Fungicide, Insecticide
Lum	LumiGEN™ (Corteva Agriscience)
Lum, L1	LumiGEN, Lumisure 1250
Treated	Treated seed, unspecified

\* Seed treatments may include unspecified plant health promoting components.