

Test by: Southern MN FIRST New Richland, MN

## 2024 Corn Grain Top 30 Harvest Report

Red River South North Dakota & Minnesota [RRSO]  
LITCHVILLE, ND  
Mark Formo, Barnes County, ND 58461

**All-Season Test** 85 - 95 Day CRM  
B2024RRSO15

**Top 30 of 40** For Gross Income  
(Sorted by Yield)  
Average of (4) Replications

**PREV. CROP/HERB:** Soybeans / Liberty, Roundup

**SOIL DESCRIPTION:** Lismore-Kranzburg silty clay loam, mod. well drained, non-irrigated

**SOIL CONDITION:** Conventional W/ Fall Till, high P, very high K, 6.2 pH, 5.0% OM, 20.8 CEC

**PEST MANAGEMENT:** Resicore, Powermax, Atrazine, Level Best

**FERTILITY - Applied N:** 160 Spring

**Applied N-P-K (units):** 160-0-0

**SEEDED - RATE - ROW:** May 11 34.4 /A 30" spacing

**HARVESTED - STAND:** Oct 28 33.5 /A

### TEST COMMENTS:

Planting into good soil conditions after spring rains, Mark told me that the growing season was good, with warm weather and rains that followed the 10-year average shown on the chart on page 2 of this Harvest Report. Note that the last substantial rain fell in mid-August. The soil was definitely dry at harvest time, but the warm temperatures through September and October allowed the corn to mature and dry down quickly.

Company/Brand	Product/Brand	Technol.†	RM	Yield Bu/A ↓	Moisture %	Lodging %	Stand (x 1000)	Gross Income \$/Acre	Rank
Renk	RK519VT4P ↗	VT4P	95	<b>216.8</b>	16.0	0	33.7	858	1
Renk	RK296AA ↗	AA	89	<b>216.3</b>	17.2	0	32.4	846	3
NK Brand	NK9400-V ↗	V	94	<b>215.1</b>	16.3	0	33.0	849	2
Golden Harvest	G91V51-DV ↗	DV	91	<b>213.6</b>	17.7	0	33.3	831	4
Renk	RK444VT2P ↗	VT2P	93	<b>210.2</b>	16.8	0	32.9	826	5
Golden Harvest	G94U63-V ↗	V	94	<b>208.9</b>	17.3	0	33.9	817	7
Renk	RK456VT2P ↗	VT2P	94	<b>207.7</b>	16.0	0	33.3	822	6
Pioneer	P9492AM GC ↗	AM	94	207.1	16.4	0	33.9	817	8
NK Brand	NK9231-AA ↗	AA	92	206.6	16.9	0	34.4	811	9
Jacobsen	JS9542DGV2P ↗	VT2PDG	95	205.7	16.8	0	34.0	808	10
Thunder	T6588 AV ↗	V	88	203.9	16.2	0	33.7	806	11
Augusta	A2037 ↗	V	87	203.5	16.1	0	33.7	805	12
Thunder	T6695 VT2P ↗	VT2P	95	202.9	16.8	0	34.0	797	13
Renk	RK485DGV2P ↗	VT2PDG	94	202.2	16.9	0	34.0	794	15
Golden Harvest	G87U44-V ↗	V	87	201.7	16.5	0	33.3	795	14
Dyna-Gro	D34SS93RIB GC ↗	STX	94	200.1	16.6	0	33.7	787	18
Dairyland	DS-2847PCE ↗	PCE	88	199.3	15.8	0	34.0	791	16
Thunder	T6396 VT2P ↗	VT2P	95	198.9	17.2	0	33.3	778	20
Renk	RK304VT2P ↗	VT2P	90	198.3	15.5	0	33.4	789	17
Thunder	T6294 VT2P ↗	VT2PDG	94	198.0	17.1	0	33.9	776	21
Dairyland	DS-2620AM ↗	AM	86	196.1	14.8	0	34.4	784	19
Pioneer	P9211AM GC ↗	AM	92	195.9	16.3	0	32.6	774	22
Augusta	A2140-AA ↗	AA	90	195.4	16.2	0	32.9	772	25
Thunder	T6591 PC ↗	PCE	91	194.8	15.7	0	33.3	774	23
Enestvedt	E612RR ↗	RR2	92	194.1	15.4	0	33.3	773	24
Thunder	T6592 VT2P ↗	VT2P	92	193.6	15.9	0	34.0	767	26
Dairyland	DS-3477AM ↗	AM	94	193.0	16.0	0	33.7	764	27
Augusta	A2541-DV ↗	DV	91	191.9	16.8	0	33.9	754	29
NK Brand	NK8711-V ↗	V	87	191.3	16.3	0	34.4	755	28
Thunder	T6490 VT2P ↗	VT2P	90	187.8	15.6	0	34.4	747	30

Mark Querna

mark.querna@firstseedtests.com, (507) 380-9920

Averages = **195.3** **16.1** **0** **33.5** **772**

LSD (0.10) = 12.6 0.7 ns

LSD (0.25) = 6.6 0.3 ns

C.V. = 7.1

Historic yield: 184.38 bu/a, 6 yr(s)

**Yield & Income Factors:** Base Moisture = 15.0% Shrink = 1.3 Drying = \$0.04 Prices: GMO = \$4.00

Report Date: 10/29/2024

† See last page for abbreviation descriptions. Dark colored row identifies the check product found in early- and full-season tests. **Bold** yields are significantly above test average by LSD(0.10). **Italicized** brands exceed the grain moisture limit for this test. **ns** = column values not significantly different. ↗ Links to full product yield results at www.firstseedtests.com

©2024, All rights reserved to Farmers' Independent Research of Seed Technologies, LLC.

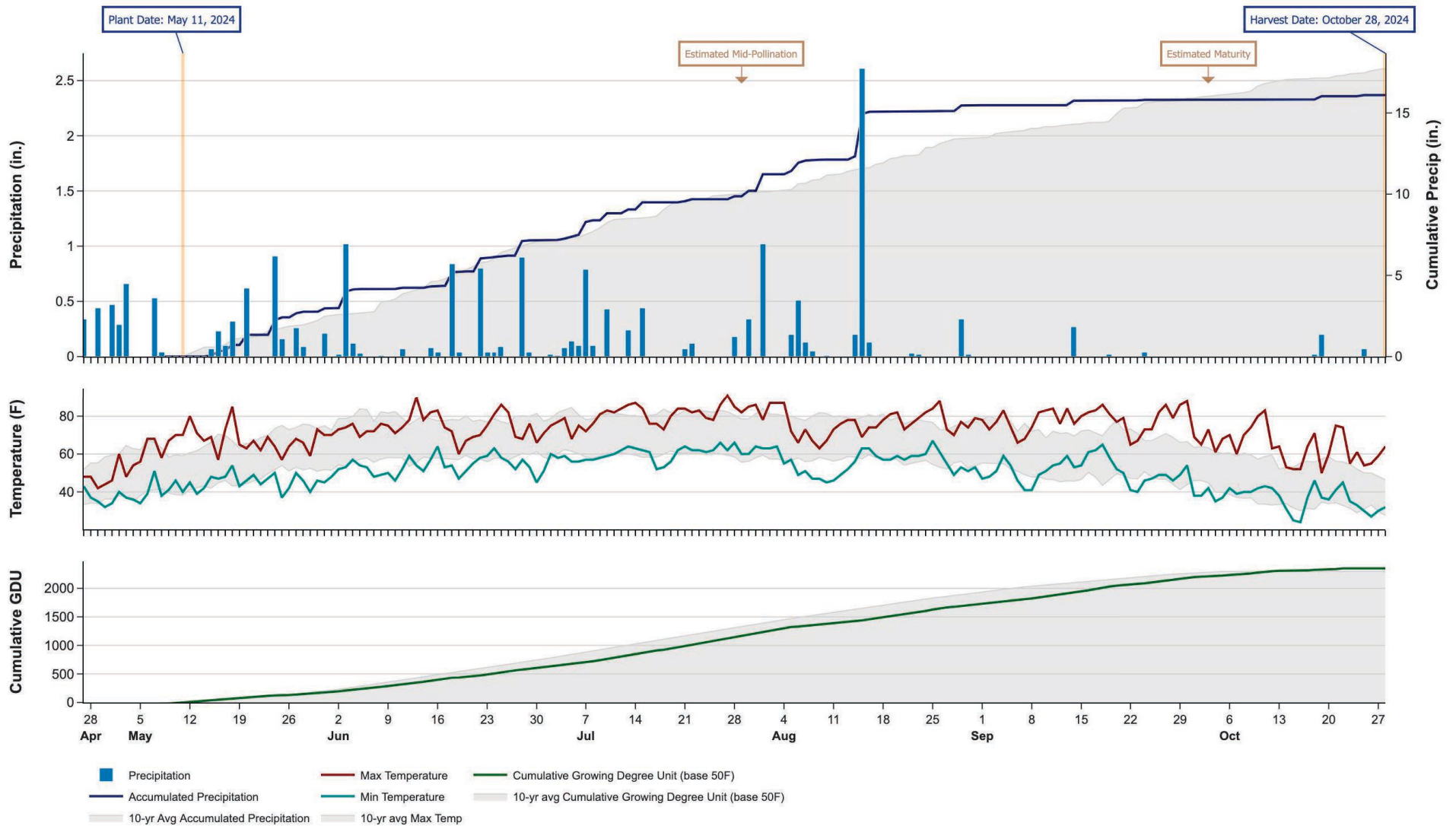
Additional reports available at [www.firstseedtests.com](http://www.firstseedtests.com)

# 2024 Corn - Red River South North Dakota & Minnesota [ RRSO ]

## Weather Conditions Summary at LITCHVILLE, ND

Weather Data Retrieved: 10/29/2024

Monthly Total	Apr*	May	Jun	Jul	Aug	Sep	Oct*	Total
Precip (in)   (Diff)	0.8   0.6 (+0.2)	5.0   3.5 (+1.4)	4.2   4.6 (-0.4)	3.1   3.0 (0.0)	5.3   3.4 (+1.9)	0.3   2.4 (-2.1)	0.3   1.8 (-1.6)	18.9   19.3 (-0.5)
GDU   Avg (Diff)	0   0 (0)	225   238 (-13)	424   542 (-118)	620   628 (-8)	502   545 (-43)	468   346 (+121)	162   31 (+130)	2401   2332 (+68)



\* First monthly total starts on the date 14 days prior to planting and final monthly total ends on the harvest date.

Note: Weather information from PRISM Climate Group. Data may be revised by the provider after retrieval. FIRST will not revise or update reports to reflect any weather data changes. For information purposes only.

## 2024 Corn - Red River South North Dakota & Minnesota [ RRSO ]

### All-Season Test Products (40 Total)

Company/Brand	Product/Brand	Technology	RIB	RM	Seed Treat.
Augusta	A2037	V	N	87	CM,C2
Augusta	A2140-AA	AA	N	90	CM,C2
Augusta	A2244	DV	Y	94	CM,C2
Augusta	A2541-DV	DV	Y	91	CM,C2
Dairyland	DS-2620AM	AM	Y	86	Lum, L1
Dairyland	DS-2847PCE	PCE	Y	88	Lum, L1
Dairyland	DS-3477AM	AM	Y	94	Lum
Dyna-Gro	D34SS93RIB GC	STX	Y	94	AC,P5V
Enestvedt	E612RR	RR2	N	92	CM,C2,Vi
Golden Harvest	G85B04-AA	AA	Y	85	CM,C5,Vi,Va
Golden Harvest	G87U44-V	V	Y	87	CM,C1,Vi,Va
Golden Harvest	G91V51-DV	DV	Y	91	AVC,C5,Vi,Va
Golden Harvest	G94U63-V	V	Y	94	CM,C5,Vi,Va
Jacobsen	JS9283SS	STX	Y	92	Treated
Jacobsen	JS9491VT2P	VT2P	Y	95	Treated
Jacobsen	JS9542DGVT2P	VT2PDG	Y	95	Treated
NK Brand	NK8558-AA	AA	Y	85	CM,C5,Vi,Va
NK Brand	NK8711-V	V	Y	87	CM,C1,Vi,Va
NK Brand	NK9021-D	D	Y	90	CM,C5,Vi,Va
NK Brand	NK9231-AA	AA	Y	92	CM,C5,Vi,Va
NK Brand	NK9400-V	V	Y	94	CM,C1,Vi,Va
Pioneer	P9193AM GC	AM	Y	91	Lum
Pioneer	P9211AM GC	AM	Y	92	Lum
Pioneer	P9492AM GC	AM	Y	94	Lum
Renk	RK296AA	AA	Y	89	CM,C2
Renk	RK304VT2P	VT2P	N	90	AC,P5V,EDC-EL
Renk	RK444VT2P	VT2P	Y*	93	AC,P2
Renk	RK456VT2P	VT2P	N	94	AC,P5V,EDC-EL
Renk	RK485DGVT2P	VT2PDG	Y*	94	AC,P2
Renk	RK519VT4P	VT4P	N	95	AC,P5V,EDC-EL
Thunder	T6294 VT2P	VT2PDG	Y	94	AC,P2
Thunder	T6389 VT2P	VT2P	Y	89	AC,P2
Thunder	T6396 VT2P	VT2P	Y	95	AC,P2
Thunder	T6490 VT2P	VT2P	Y	90	AC,P2
Thunder	T6587 PC	PCE	Y	87	F,I
Thunder	T6588 AV	V	Y	88	F,I
Thunder	T6591 PC	PCE	Y	91	F,I
Thunder	T6592 VT2P	VT2P	Y	92	F,I
Thunder	T6695 VT2P	VT2P	Y	95	F,I
Thunder	T6987 VT2P	VT2P	Y	87	F,I

\* FIRST does not inspect products for refuge blend. N\* indicates the product was entered without a refuge component by the sponsoring seed company. Prior year entries may contain refuge blend.

## Footnotes and Abbreviations Descriptions

### Brand Footnotes

---

CK	Identifies a check product included in early- and full-season tests.
GC	Grower Comparison product included by FIRST when space permits.
^	Innotech™ brand seed is distributed by Rob-See-Co, LLC. Innotech™ is a trademark of Syngenta. Power Plus® brand seed is distributed by Burrus. Power Plus® is a registered trademark of Corteva Agriscience.

### Corn Technologies

---

AA	Agrisure® Above (CB,HX,LL,GT), formerly Agrisure® 3120
AM	Optimum® AcreMax®
D	Duracade™ (CB,HX,RW,RW2,LL,GT), formerly Agrisure Duracade® 5122
DV	DuracadeViptera™ (Vip,CB,HX,RW,RW2,LL,GT), formerly Agrisure Duracade® 5222
PCE	PowerCore® Enlist®
RR2	Roundup Ready® 2 Corn
STX	SmartStax®
V	Viptera™ (Vip,CB,HX,LL,GT), formerly Agrisure Viptera® 3220
VT2P	VT Double PRO®
VT2PDG	DroughtGard® with VT Double PRO®
VT4P	VT4Pro™ with RNAi Technology

NOTE: The refuge component genetics may vary in a refuge blend seed product.

### Corn Seed Treatments\*

---

NA	Not Available
AC,P2	Acceleron® 250
AC,P5V	Acceleron® Poncho 500/Votivo
AC,P5V,EDC-EL	Acceleron® ELITE Poncho 500/Votivo with Enhanced Disease Control
AVC,C5,Vi,Va	Avicta Complete 500, Vibrance, Vayantis
CM,C1,Vi,Va	CruiserMaxx® 1250 with Vibrance, Vayantis®
CM,C2	CruiserMaxx® 250
CM,C2,Vi	CruiserMaxx® 250 with Vibrance
CM,C5,Vi,Va	CruiserMaxx® 500 with Vibrance, Vayantis®
F,I	Fungicide, Insecticide
Lum	LumiGEN™ (Corteva Agriscience)
Lum, L1	LumiGEN, Lumisure 1250
Treated	Treated seed, unspecified

\* Seed treatments may include unspecified plant health promoting components.