

Test by: Centrol Crop Consulting Volga, SD

2024 Corn Grain Top 30 Harvest Report

South Dakota Northeast [SDNE] BATH, SD
Scott Sperry, Brown County, SD 57427

Early-Season Test 91 - 95 Day CRM
B2024SDNE01a

Top 30 of 40 For Gross Income
(Sorted by Yield)
Average of (4) Replications

PREV. CROP/HERB: Soybeans / Sonic, Liberty,
Roundup, Volunteer

SOIL DESCRIPTION: Harmony-Beotia silt loam, mod.
well drained, non-irrigated

SOIL CONDITION: Strip-Till, very high P, very high
K, 5.8 pH, 4.6% OM, 21.4 CEC

PEST MANAGEMENT: Harness Xtra, Incinerate,
Roundup Power Max, Sterling
Blue, Widematch

FERTILITY - Applied N: 150 Fall, 10 units Sulfur

Applied N-P-K (units): 150-90-0

SEEDED - RATE - ROW: May 22 32.5 /A 30" spacing

HARVESTED - STAND: Nov 4 32.5 /A

TEST COMMENTS:

Excellent yields across the board on this trial. Rootworm pressure was present in some of the plots which led to some lodging. Although wet early, the right moisture fell at the right time for this location, leading to excellent yields.

Company/Brand	Product/Brand	Technol.†	RM	Yield Bu/A ↓	Moisture %	Lodging %	Stand (x 1000)	Gross Income \$/Acre	Rank	
Heine	6561VT4PRIB ↗	VT4P	95	239.4	17.7	0	32.3	848	1	
Renk	RK519VT4P ↗	VT4P	95	233.1	17.9	0	32.3	824	2	
Pioneer	P9211AM GC ↗	AM	92	230.6	17.3	0	33.8	820	3	
Dahlman	R47-24VT2PRIB ↗	VT2P	94	229.6	17.8	16	31.9	813	5	
Renk	RK456VT2P ↗	VT2P	94	228.7	17.1	0	31.9	816	4	
Heine	6460VT2PRIB ↗	VT2P	94	227.5	17.7	0	33.0	806	6	
Heine	6215VT2PRIB ↗	VT2P	95	226.9	18.3	0	33.0	799	10	
Jacobsen	JS9494VT2P ↗	VT2P	94	225.6	17.6	0	32.7	800	9	
Heine	6330DGV2PRIB ↗	VT2PDG	95	225.4	18.5	0	32.3	792	13	
Jacobsen	JS9414VT2P ↗	VT2P	95	225.3	17.4	15	32.7	801	7	
Dahlman	R47-258VT2PRIB ↗	VT2P	94	225.1	17.3	0	31.2	801	8	
Integra	CX311096VT ↗	VT2P	94	224.5	17.3	23	32.7	799	11	
Renk	RK444VT2P ↗	VT2P	93	224.3	17.6	6	31.9	795	12	
Thunder	T8592 SS ↗	STX	92	224.3	18.2	0	32.7	790	14	
Thunder	T6592 VT2P ↗	VT2P	92	221.5	17.5	0	31.9	786	15	
Pioneer	P9489Q GC ↗	QR	94	220.8	18.8	6	32.3	772	19	
Thunder	T6695 VT2P ↗	VT2P	95	220.4	17.8	0	32.3	780	16	
Augusta	A2140-AA ↗	AA	90	219.9	17.8	0	32.3	778	17	
Dahlman	R47-245DGV2PRIB ↗	VT2PDG	94	219.5	18.4	0	32.3	771	20	
Dahlman	R45-250VT2PRIB ↗	VT2P	90	219.3	17.5	20	32.7	778	18	
Jacobsen	JS9542DGV2P ↗	VT2PDG	95	218.9	18.7	0	32.3	766	22	
Renk	RK561DGV2P ↗	VT2PDG	95	217.8	17.9	6	32.3	770	21	
Jacobsen	JS9053VT2P ↗	VT2P	91	215.7	17.7	0	32.4	764	23	
Augusta	A2244 ↗	DV	94	215.0	19.1	0	32.3	750	27	
Dahlman	R48-239VT2PRIB ↗	VT2P	95	214.7	17.9	0	33.0	759	24	
Jacobsen	JS9672VT2P ↗	VT2P	95	214.6	18.3	12	33.0	755	26	
DeKalb	DKC42-64RIB GC ↗	STX	92	214.1	17.8	0	32.7	758	25	
Renk	RK485DGV2P ↗	VT2PDG	94	213.5	18.7	9	32.3	747	28	
Augusta	A2541-DV ↗	DV	91	212.8	19.2	0	32.7	741	29	
Integra	4105 VT2PRIB ↗	VT2P	91	209.8	17.9	0	32.7	741	30	
DEKALB	DKC43-75RIB CK	VT2P	93	199.0	17.4	0	32.3	707	37	
				Averages =	216.1	18.0	5	32.5	763	
				LSD (0.10) =	13.0	0.5	13			
				LSD (0.25) =	6.8	0.3	7			
				C.V. =	6.6					
Matt Eich				Historic yield: 209.88 bu/a, 23 yr(s)						
matt.eich@firstseedtests.com, (605) 690-8748										

Yield & Income Factors: Base Moisture = 15.0% Shrink = 1.3 Drying = \$0.04 Prices: GMO = \$3.65

Report Date: 11/05/2024

† See last page for abbreviation descriptions. Dark colored row identifies the check product found in early- and full-season tests. **Bold** yields are significantly above test average by LSD(0.10). **Italicized** brands exceed the grain moisture limit for this test. **ns** = column values not significantly different. ↗ Links to full product yield results at www.firstseedtests.com

©2024, All rights reserved to Farmers' Independent Research of Seed Technologies, LLC.

Additional reports available at www.firstseedtests.com

Test by: Centrol Crop Consulting Volga, SD

2024 Corn Grain Top 30 Harvest Report

South Dakota Northeast [SDNE] BATH, SD
Scott Sperry, Brown County, SD 57427

Full-Season Test 96 - 100 Day CRM
B2024SDNE01b

Top 30 of 40 For Gross Income
(Sorted by Yield)
Average of (4) Replications

PREV. CROP/HERB: Soybeans / Sonic, Liberty,
Roundup, Volunteer

SOIL DESCRIPTION: Harmony-Beotia silt loam, mod.
well drained, non-irrigated

SOIL CONDITION: Strip-Till, very high P, very high
K, 5.8 pH, 4.6% OM, 21.4 CEC

PEST MANAGEMENT: Harness Xtra, Incinerate,
Roundup Power Max, Sterling
Blue, Widematch

FERTILITY - Applied N: 150 Fall, 10 units Sulfur

Applied N-P-K (units): 150-90-0

SEEDED - RATE - ROW: May 22 32.5 /A 30" spacing

HARVESTED - STAND: Nov 4 32.6 /A

TEST COMMENTS:

Excellent yields across the board on this trial. Rootworm pressure was present in some of the plots which led to some lodging. Although wet early, the right moisture fell at the right time for this location, leading to excellent yields.

Company/Brand	Product/Brand	Technol.†	RM	Yield Bu/A ↓	Moisture %	Lodging %	Stand (x 1000)	Gross Income \$/Acre	Rank
Dairyland	DS-3881V ↗	VE	98	241.9	18.2	0	32.7	852	1
Thunder	T6298 VT2P ↗	VT2P	98	234.9	17.1	12	32.3	838	2
Pioneer	P9955AM GC ↗	AM	97	232.6	19.3	0	33.0	809	6
Heine	7017SSPRIB ↗	STXP	100	231.6	18.2	0	31.9	816	4
Thunder	T6500 VT2P ↗	VT2P	100	231.3	17.3	12	32.3	822	3
Enestvedt	E600DP RIB ↗	VT2P	99	230.1	17.8	0	32.7	815	5
Thunder	T8598 SS ↗	STX	98	227.4	18.6	0	31.9	797	8
Renk	RK582SSTX ↗	STX	98	226.0	18.0	0	33.0	798	7
Heine	7053VT2PRIB ↗	VT2P	100	224.5	17.5	0	32.3	797	9
DeKalb	DKC99-11RIB GC ↗	VT2P	99	223.4	18.1	6	32.3	788	10
Renk	RK630TRE ↗	TRE	100	222.0	17.7	21	33.0	787	11
Legacy	LC-4248 SS ↗	STX	100	222.0	18.5	0	32.7	780	13
Heine	6650TRERIB ↗	TRE	99	221.1	17.5	27	32.3	785	12
Integra	4702 VT2PRIB ↗	VT2P	97	220.7	17.9	0	32.3	780	14
Jacobsen	JS9904SS ↗	STX	98	220.7	18.4	0	31.9	776	15
Heine	7025VT2PRIB ↗	VT2P	100	219.4	18.3	0	32.3	772	16
Thunder	T8396 SS ↗	STX	96	218.7	18.9	0	31.9	764	19
Renk	RK597SSPRO ↗	STXP	99	218.6	18.5	0	32.3	767	18
Renk	RK579DGV2P ↗	VT2PDG	99	217.4	18.5	0	32.7	763	20
Enestvedt	E665TRE ↗	TRE	97	217.1	17.6	0	31.2	770	17
Jacobsen	JS0063VT4P ↗	VT4P	100	216.5	18.1	6	31.9	763	21
Integra	5055 VT4PRIB ↗	VT4P	100	216.0	18.1	12	33.8	762	22
Dairyland	DS-3730V ↗	VE	97	214.2	18.0	0	31.9	756	23
Golden Harvest	G97B68-DV ↗	DV	97	213.5	19.6	0	32.7	740	27
Jacobsen	JS0083VT2P ↗	VT2P	100	211.7	18.4	0	33.4	744	25
Jacobsen	JS9723TRE ↗	TRE	97	211.3	17.4	0	33.8	750	24
Heine	6760TRERIB ↗	TRE	97	209.3	17.6	0	32.7	742	26
Renk	RK586VT4P ↗	VT4P	99	205.8	18.7	0	31.9	721	28
Pioneer	P97299Q GC ↗	AQ	97	204.3	19.6	0	32.9	708	31
Golden Harvest	G98U62-DV ↗	DV	98	203.2	19.0	0	32.7	709	30
DEKALB	DKC43-75RIB CK	VT2P	93	201.9	17.6	0	31.9	716	29

Matt Eich

matt.eich@firstseedtests.com, (605) 690-8748

Averages = **213.9** **18.2** **8** **32.6** **752**
LSD (0.10) = 12.4 0.4 15
LSD (0.25) = 6.5 0.2 8
C.V. = 6.3

Historic yield: 209.88 bu/a, 23 yr(s)

Yield & Income Factors: Base Moisture = 15.0% Shrink = 1.3 Drying = \$0.04 Prices: GMO = \$3.65

Report Date: 11/05/2024

† See last page for abbreviation descriptions. Dark colored row identifies the check product found in early- and full-season tests. **Bold** yields are significantly above test average by LSD(0.10). **Italicized** brands exceed the grain moisture limit for this test. **ns** = column values not significantly different. ↗ Links to full product yield results at www.firstseedtests.com

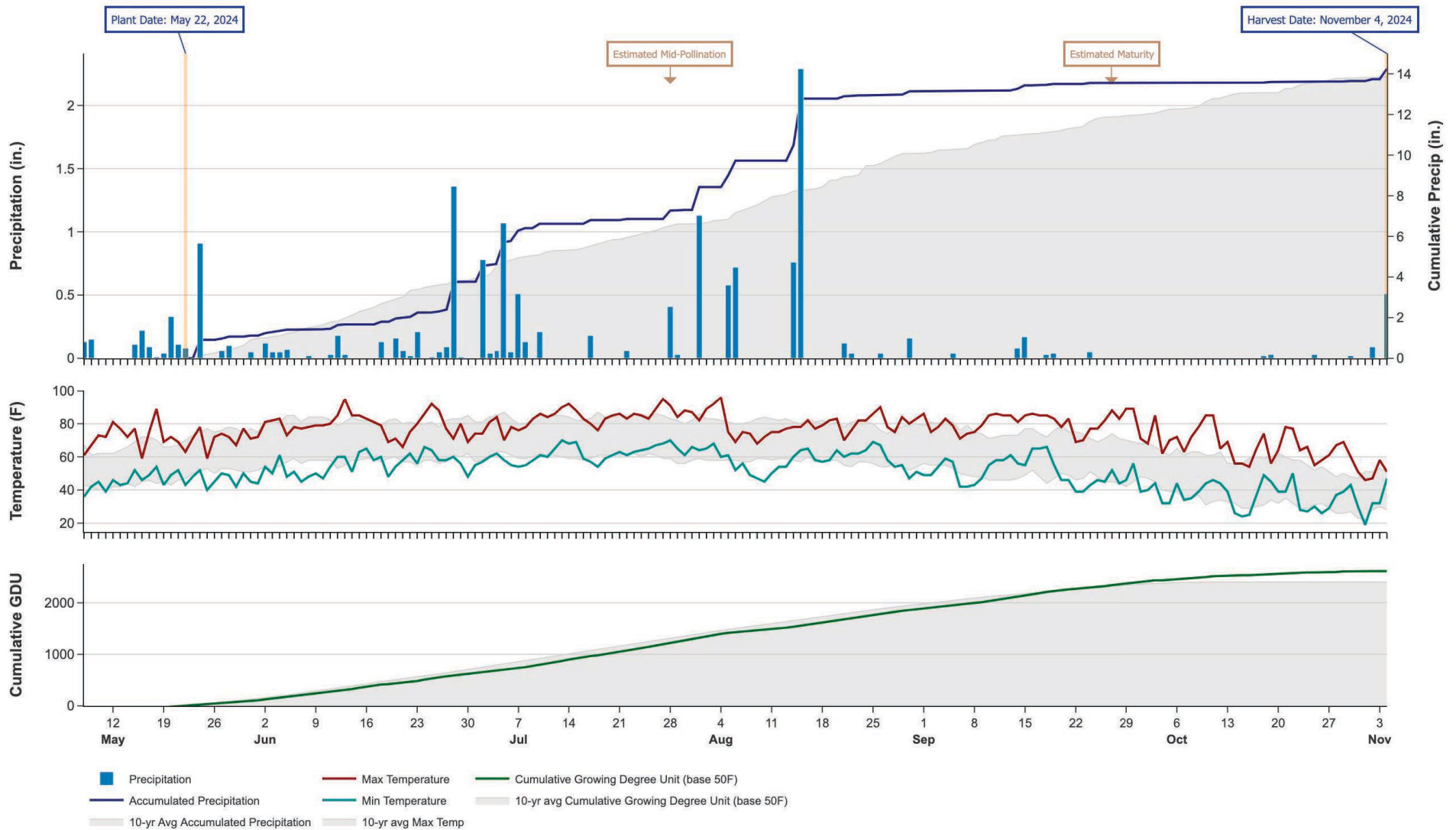
©2024, All rights reserved to Farmers' Independent Research of Seed Technologies, LLC.

Additional reports available at www.firstseedtests.com

2024 Corn - South Dakota Northeast [SDNE]

Weather Conditions Summary at BATH, SD

Monthly Total	May*	Jun	Jul	Aug	Sep	Oct	Nov*	Total
Precip (in) (Diff)	2.4 2.4 (0.0)	2.6 2.9 (-0.3)	3.5 2.8 (+0.8)	5.8 3.5 (+2.4)	0.4 1.9 (-1.4)	0.1 1.9 (-1.8)	0.6 0.0 (+0.6)	15.5 15.3 (+0.2)
GDU Avg (Diff)	256 246 (+10)	520 583 (-63)	683 675 (+8)	576 586 (-10)	522 385 (+137)	215 52 (+163)	0 0 (0)	2772 2527 (+244)



* First monthly total starts on the date 14 days prior to planting and final monthly total ends on the harvest date.

Note: Weather information from PRISM Climate Group. Data may be revised by the provider after retrieval. FIRST will not revise or update reports to reflect any weather data changes. For information purposes only.

2024 Corn - South Dakota Northeast [SDNE]

Early-Season Test Products (40 Total)

Company/Brand	Product/Brand	Technology	RIB	RM	Seed Treat.
Augusta	A2140-AA	AA	N	90	CM,C2
Augusta	A2244	DV	Y	94	CM,C2
Augusta	A2541-DV	DV	Y	91	CM,C2
Dahlman	R45-250VT2PRIB	VT2P	Y	90	Treated
Dahlman	R47-245DGV2PRIB	VT2PDG	Y	94	Treated
Dahlman	R47-24VT2PRIB	VT2P	Y	94	Treated
Dahlman	R47-258VT2PRIB	VT2P	Y	94	Treated
Dahlman	R48-239VT2PRIB	VT2P	Y*	95	Treated
Dairyland	DS-3477AM	AM	Y	94	Lum,P5V
DeKalb	DKC41-54RIB GC	STXP	Y	91	AC,P5V,EDC-EL
DeKalb	DKC42-64RIB GC	STX	Y	92	AC,P5V,EDC-EL
DeKalb	DKC43-75RIB CK	VT2P	Y	93	AC,P5V
Enestvedt	E612RR	RR2	N	92	CM,C2,Vi
Golden Harvest	G91V51-DV	DV	Y	91	AVC,C5,Vi,Va
Golden Harvest	G94U63-V	V	Y	94	CM,C5,Vi,Va
Heine	6122VT2PRIB	VT2P	Y	91	F,I,B,NE,NU
Heine	6215VT2PRIB	VT2P	Y*	95	F,I,B,NE,NU
Heine	6330DGV2PRIB	VT2PDG	Y*	95	F,I,B,NE,NU
Heine	6460VT2PRIB	VT2P	Y	94	F,I,B,NE,NU
Heine	6561VT4PRIB	VT4P	Y	95	F,I,B,NE,NU
Integra	4105 VT2PRIB	VT2P	Y	91	AC,P5V,St,SU
Integra	CX311096VT	VT2P	Y	94	Treated
Jacobsen	JS9053VT2P	VT2P	Y	91	Treated
Jacobsen	JS9414VT2P	VT2P	Y	95	Treated
Jacobsen	JS9494VT2P	VT2P	Y	94	Treated
Jacobsen	JS9542DGV2P	VT2PDG	Y	95	Treated
Jacobsen	JS9672VT2P	VT2P	Y	95	Treated
Legacy	LC414-21 SSX RIB	STX	Y	91	P5V
Pioneer	P9211AM GC	AM	Y	92	Lum
Pioneer	P9489Q GC	QR	Y	94	Lum, L1
Renk	RK444VT2P	VT2P	Y*	93	AC,P2
Renk	RK456VT2P	VT2P	N	94	AC,P5V,EDC-EL
Renk	RK485DGV2P	VT2PDG	Y*	94	AC,P2
Renk	RK519VT4P	VT4P	N	95	AC,P5V,EDC-EL
Renk	RK561DGV2P	VT2PDG	Y*	95	AC,P2
Thunder	T6294 VT2P	VT2PDG	Y	94	AC,P2
Thunder	T6591 PC	PCE	Y	91	F,I
Thunder	T6592 VT2P	VT2P	Y	92	F,I
Thunder	T6695 VT2P	VT2P	Y	95	F,I
Thunder	T8592 SS	STX	Y	92	F,I

* FIRST does not inspect products for refuge blend. N* indicates the product was entered without a refuge component by the sponsoring seed company. Prior year entries may contain refuge blend.

2024 Corn - South Dakota Northeast [SDNE]

Full-Season Test Products (40 Total)

Company/Brand	Product/Brand	Technology	RIB	RM	Seed Treat.
Augusta	A1946-AA	AA	N	96	CM,C2
Augusta	A2350	D	Y	100	CM,C2
Chargen	VX-9631	PCE	Y	96	CM,C2,Vi,Va
Chargen	VX-9931	PCE	Y	99	CM,C2,Vi,Va
Dahlman	R49-29VT2PRIB	VT2P	Y	98	Treated
Dahlman	R50-252VT2PRIB	VT2P	Y	100	Treated
Dairyland	DS-3730V	VE	Y	97	Lum, L1
Dairyland	DS-3881V	VE	Y	98	Lum, L1
DeKalb	DKC43-75RIB CK	VT2P	Y	93	AC,P5V
DeKalb	DKC99-11RIB GC	VT2P	Y	99	AC,P5V,EDC-EL
Enestvedt	E600DP RIB	VT2P	Y	99	AC,P2
Enestvedt	E654PCE	PCE	N	96	LumPro P2
Enestvedt	E665TRE	TRE	Y	97	AC,P5V,EDC-EL
Golden Harvest	G97B68-DV	DV	Y	97	CM,C5,Vi,Va
Golden Harvest	G98U62-DV	DV	Y	98	CM,C1,Vi,Va
Heine	6650TRERIB	TRE	N	99	F,I,B,NE,NU
Heine	6760TRERIB	TRE	Y	97	F,I,B,NE,NU
Heine	7017SSPRIB	STXP	Y	100	F,I,B,NE,NU
Heine	7025VT2PRIB	VT2P	Y	100	F,I,B,NE,NU
Heine	7053VT2PRIB	VT2P	Y	100	F,I,B,NE,NU
Integra	4702 VT2PRIB	VT2P	Y	97	AC,P5V,St,SU
Integra	4845PCE	PCE	Y	98	AC,P5V,St,SU
Integra	5055 VT4PRIB	VT4P	Y	100	AC,P5V,St,SU
Jacobsen	JS0063VT4P	VT4P	Y	100	Treated
Jacobsen	JS0083VT2P	VT2P	Y	100	Treated
Jacobsen	JS9723TRE	TRE	Y	97	Treated
Jacobsen	JS9904SS	STX	Y	98	Treated
Legacy	LC-4248 SS	STX	Y	100	P5V
Pioneer	P97299Q GC	AQ	Y	97	Lum, L1
Pioneer	P9955AM GC	AM	Y	97	Lum, L1
Renk	RK579DGV2P	VT2PDG	Y	99	AC,P2
Renk	RK582SSSTX	STX	Y*	98	AC,P5V,EDC-EL
Renk	RK586VT4P	VT4P	N	99	AC,P5V,EDC-EL
Renk	RK597SSPRO	STXP	Y*	99	AC,P5V,EDC-EL
Renk	RK630TRE	TRE	N	100	AC,P2
Thunder	T6298 VT2P	VT2P	Y	98	AC,P5V,Va
Thunder	T6498 PC	PCE	N	98	CM,C2,Vi,Va
Thunder	T6500 VT2P	VT2P	Y	100	AC,P2
Thunder	T8396 SS	STX	Y	96	AC,P5
Thunder	T8598 SS	STX	Y	98	F,I

* FIRST does not inspect products for refuge blend. N* indicates the product was entered without a refuge component by the sponsoring seed company. Prior year entries may contain refuge blend.

Footnotes and Abbreviations Descriptions

Brand Footnotes

CK	Identifies a check product included in early- and full-season tests.
GC	Grower Comparison product included by FIRST when space permits.
^	Innotech™ brand seed is distributed by Rob-See-Co, LLC. Innotech™ is a trademark of Syngenta. Power Plus® brand seed is distributed by Burrus. Power Plus® is a registered trademark of Corteva Agriscience.

Corn Technologies

AA	Agrisure® Above (CB,HX,LL,GT), formerly Agrisure® 3120
AM	Optimum® AcreMax®
AQ	Optimum® AQUAmax®
D	Duracade™ (CB,HX,RW,RW2,LL,GT), formerly Agrisure Duracade® 5122
DV	DuracadeViptera™ (Vip,CB,HX,RW,RW2,LL,GT), formerly Agrisure Duracade® 5222
PCE	PowerCore® Enlist®
QR	Qrome®
RR2	Roundup Ready® 2 Corn
STX	SmartStax®
STXP	SmartStax® Pro with RNAi Technology
TRE	Trecepta®
V	Viptera™ (Vip,CB,HX,LL,GT), formerly Agrisure Viptera® 3220
VE	Vorceed™ Enlist®
VT2P	VT Double PRO®
VT2PDG	DroughtGard® with VT Double PRO®
VT4P	VT4Pro™ with RNAi Technology

NOTE: The refuge component genetics may vary in a refuge blend seed product.

Corn Seed Treatments*

NA	Not Available
AC,P2	Acceleron® 250
AC,P5	Acceleron® 500
AC,P5V	Acceleron® Poncho 500/Votivo
AC,P5V,EDC-EL	Acceleron® ELITE Poncho 500/Votivo with Enhanced Disease Control
AC,P5V,St,SU	Acceleron® Poncho 500/Votivo, Stamina, StepUp
AC,P5V,Va	Acceleron® Poncho 500/Votivo, Vayantis®
AVC,C5,Vi,Va	Avicta Complete 500, Vibrance, Vayantis
CM,C1,Vi,Va	CruiserMaxx® 1250 with Vibrance, Vayantis®
CM,C2	CruiserMaxx® 250
CM,C2,Vi	CruiserMaxx® 250 with Vibrance
CM,C2,Vi,Va	CruiserMaxx® 250 with Vibrance, Vayantis®
CM,C5,Vi,Va	CruiserMaxx® 500 with Vibrance, Vayantis®
F,I	Fungicide, Insecticide
F,I,B,NE,NU	Fungicide, Insecticide, Biological, Nematicide, Nutrition
Lum	LumiGEN™ (Corteva Agriscience)
Lum, L1	LumiGEN, Lumisure 1250
Lum,P5V	LumiGEN™ Poncho 500/Votivo
LumPro P2	Lumiscend Pro /Lumiflex fungicide, L-2012R bio-fungicide, Lumisure 250/ Lumivia250 insecticide, Lumialza nematicide
P5V	Poncho 500/Votivo
Treated	Treated seed, unspecified

* Seed treatments may include unspecified plant health promoting components.