

Test by: Centrol Crop Consulting Volga, SD

2024 Corn Grain Top 30 Harvest Report

South Dakota Northeast [SDNE] WATERTOWN, SD
Myron Keltgen, Codington County, SD 57201

Early-Season Test 91 - 95 Day CRM
B2024SDNE04a

Top 30 of 40 For Gross Income
(Sorted by Yield)
Average of (4) Replications

PREV. CROP/HERB: Soybeans / Authority First, Glory
Df, Interline, Anthem Maxx,
Mobilize, Dry Ams

SOIL DESCRIPTION: Buse-Poinsett Complex loam,
well drained, non-irrigated

SOIL CONDITION: No-Till, very high P, very high K,
6.2 pH, 4.7% OM, 19.1 CEC

PEST MANAGEMENT: Force, Harness Xtra, Atrazine,
Bellum

FERTILITY - Applied N: 90 Spring, 105 Foliar Rescue

Applied N-P-K (units): 195-70-100

SEEDED - RATE - ROW: May 17 32.5 /A 30" spacing

HARVESTED - STAND: Oct 31 31.4 /A

TEST COMMENTS:

This was a challenging site with multiple hybrids that struggled after stand establishment. Some hybrids completed with a thin stand, and others seemed to fall apart. There was a fair bit of stalk rots that appear to have struck later in the season causing many of the lower yields. The early-day hybrids seemed to struggle more than fuller-season hybrids. The early-season test was rejected due to high yield variability from the disease pressure.

| Company/Brand | Product/Brand | Tested † | RR | Total Bu/a | Moisture % | Shrink % | Stand (x 1000) | Gross Income \$/acre | Rank |
|---------------|---------------|----------|----|------------|------------|----------|----------------|----------------------|------|
| Deere | Optimum 7 | VTOP | 96 | 227.7 | 18.6 | 0 | 34.8 | 880 | 2 |
| Deere | Optimum 7 | VTOP | 96 | 226.8 | 17.4 | 0 | 34.1 | 880 | 3 |
| Deere | Optimum 7 | VTOP | 96 | 211.3 | 18.6 | 0 | 34.8 | 740 | 4 |
| Deere | Optimum 7 | VTOP | 96 | 209.8 | 18.2 | 0 | 33.7 | 718 | 5 |
| Deere | Optimum 7 | VTOP | 96 | 198.8 | 17.7 | 0 | 33.7 | 707 | 6 |
| Deere | Optimum 7 | VTOP | 96 | 197.7 | 18.2 | 0 | 33.7 | 698 | 7 |
| Deere | Optimum 7 | VTOP | 96 | 197.1 | 17.9 | 0 | 33.7 | 672 | 8 |
| Deere | Optimum 7 | VTOP | 96 | 187.7 | 18.2 | 0 | 31.8 | 668 | 9 |
| Deere | Optimum 7 | VTOP | 96 | 186.8 | 18.2 | 0 | 31.8 | 662 | 10 |
| Deere | Optimum 7 | VTOP | 96 | 186.8 | 18.2 | 0 | 31.8 | 662 | 11 |
| Deere | Optimum 7 | VTOP | 96 | 181.3 | 17.1 | 0 | 31.2 | 646 | 12 |
| Deere | Optimum 7 | VTOP | 96 | 180.0 | 18.9 | 0 | 31.2 | 638 | 13 |
| Deere | Optimum 7 | VTOP | 96 | 179.4 | 18.2 | 0 | 31.2 | 638 | 14 |
| Deere | Optimum 7 | VTOP | 96 | 176.4 | 18.2 | 0 | 31.2 | 614 | 15 |
| Deere | Optimum 7 | VTOP | 96 | 176.7 | 18.4 | 0 | 30.9 | 614 | 16 |
| Deere | Optimum 7 | VTOP | 96 | 173.3 | 18.2 | 0 | 31.2 | 608 | 17 |
| Deere | Optimum 7 | VTOP | 96 | 172.4 | 17.8 | 0 | 31.2 | 608 | 18 |
| Deere | Optimum 7 | VTOP | 96 | 169.0 | 18.6 | 0 | 31.8 | 596 | 19 |
| Deere | Optimum 7 | VTOP | 96 | 163.3 | 18.8 | 0 | 30.8 | 587 | 20 |
| Deere | Optimum 7 | VTOP | 96 | 161.3 | 18.2 | 0 | 30.8 | 580 | 21 |
| Deere | Optimum 7 | VTOP | 96 | 161.3 | 18.7 | 0 | 30.2 | 563 | 22 |
| Deere | Optimum 7 | VTOP | 96 | 158.8 | 18.2 | 0 | 30.8 | 562 | 23 |
| Deere | Optimum 7 | VTOP | 96 | 158.4 | 17.4 | 0 | 34.8 | 558 | 24 |
| Deere | Optimum 7 | VTOP | 96 | 153.8 | 18.8 | 0 | 28.8 | 537 | 25 |
| Deere | Optimum 7 | VTOP | 96 | 151.7 | 17.7 | 0 | 34.8 | 537 | 26 |
| Deere | Optimum 7 | VTOP | 96 | 150.1 | 17.7 | 0 | 33.8 | 530 | 27 |
| Deere | Optimum 7 | VTOP | 96 | 148.8 | 17.2 | 0 | 33.2 | 532 | 28 |
| Deere | Optimum 7 | VTOP | 96 | 143.7 | 18.8 | 0 | 30.4 | 503 | 29 |
| Deere | Optimum 7 | VTOP | 96 | 143.3 | 17.8 | 0 | 30.4 | 508 | 30 |



Matt Eich

Matt Eich
matt.eich@firstseedtests.com, (605) 690-8748

| | | | | | |
|--------------|-------|------|----|---------------------------------------|-----|
| Averages = | 160.0 | 18.2 | | 31.4 | 573 |
| LSD (0.10) = | 36.0 | 0.5 | ns | | |
| LSD (0.25) = | 18.9 | 0.3 | ns | | |
| C.V. = | 24.6 | | | Historic yield: 208.52 bu/a, 13 yr(s) | |

Yield & Income Factors: Base Moisture = 15.0% Shrink = 1.3 Drying = \$0.04 Prices: GMO = \$3.65

Report Date: Nov. 1, 2024

† See last page for abbreviation descriptions. Dark colored row identifies the check product found in early- and full-season tests. **Bold** yields are significantly above test average by LSD(0.10). **Italicized** brands exceed the grain moisture limit for this test. **ns** = column values not significantly different. ↗ Links to full product yield results at www.firstseedtests.com

Additional reports available at www.firstseedtests.com

Test by: Centrol Crop Consulting Volga, SD


2024 Corn Grain Top 30 Harvest Report

South Dakota Northeast [SDNE] WATERTOWN, SD
Myron Keltgen, Codington County, SD 57201

| | |
|-------------------------------|---|
| Full-Season Test | 96 - 100 Day CRM B2024SDNE04b |
| Top 30 of 40 | For Gross Income (Sorted by Yield) Average of (4) Replications |
| PREV. CROP/HERB: | Soybeans / Authority First, Glory Df, Interline, Anthem Maxx, Mobilize, Dry Ams |
| SOIL DESCRIPTION: | Buse-Poinsett Complex loam, well drained, non-irrigated |
| SOIL CONDITION: | No-Till, very high P, very high K, 6.2 pH, 4.7% OM, 19.1 CEC |
| PEST MANAGEMENT: | Force, Harness Xtra, Atrazine, Bellum |
| FERTILITY - Applied N: | 90 Spring, 105 Foliar Rescue |
| Applied N-P-K (units): | 195-70-100 |
| SEEDED - RATE - ROW: | May 17 32.5 /A 30" spacing |
| HARVESTED - STAND: | Oct 31 29.9 /A |

TEST COMMENTS:

This was a challenging site with multiple hybrids that struggled after stand establishment. Some hybrids completed with a thin stand, and others seemed to fall apart. There was a fair bit of stalk rots that appear to have struck later in the season causing many of the lower yields. The early-day hybrids seemed to struggle more than fuller-season hybrids. The early-season test was rejected due to high yield variability from the disease pressure.

| Company/Brand | Product/Brand | Technol.† | RM | Yield Bu/A ↓ | Moisture % | Lodging % | Stand (x 1000) | Gross Income \$/Acre | Rank |
|--|-----------------------|-------------|-----------|--|--------------|-------------|----------------|----------------------|-----------|
| Renk | RK582SSTX ↗ | STX | 98 | 235.2 | 19.0 | 0 | 31.9 | 821 | 2 |
| Integra | 5055 VT4PRIB ↗ | VT4P | 100 | 235.2 | 18.5 | 0 | 28.3 | 826 | 1 |
| Thunder | T6298 VT2P ↗ | VT2P | 98 | 228.8 | 16.8 | 0 | 27.5 | 818 | 3 |
| Heine | 6650TRERIB ↗ | TRE | 99 | 223.9 | 17.9 | 0 | 27.5 | 791 | 4 |
| Golden Harvest | G97B68-DV ↗ | DV | 97 | 223.4 | 19.0 | 0 | 31.2 | 779 | 5 |
| Thunder | T8396 SS ↗ | STX | 96 | 220.5 | 18.9 | 0 | 30.0 | 771 | 6 |
| Integra | 4702 VT2PRIB ↗ | VT2P | 97 | 216.8 | 18.6 | 0 | 31.2 | 761 | 7 |
| Integra | 4845PCE ↗ | PCE | 98 | 215.8 | 19.2 | 0 | 25.1 | 752 | 8 |
| Jacobsen | JS0063VT4P ↗ | VT4P | 100 | 214.4 | 19.0 | 0 | 32.9 | 749 | 9 |
| Dahlman | R50-252VT2PRIB ↗ | VT2P | 100 | 211.3 | 18.1 | 0 | 27.6 | 745 | 10 |
| Renk | RK579DGV2P ↗ | VT2PDG | 99 | 209.7 | 17.7 | 0 | 33.8 | 743 | 11 |
| Dahlman | R49-29VT2PRIB ↗ | VT2P | 98 | 207.9 | 18.8 | 0 | 31.2 | 727 | 13 |
| Jacobsen | JS0083VT2P ↗ | VT2P | 100 | 207.8 | 18.4 | 0 | 30.4 | 731 | 12 |
| Thunder | T8598 SS ↗ | STX | 98 | 206.9 | 18.9 | 0 | 31.9 | 723 | 14 |
| Jacobsen | JS9904SS ↗ | STX | 98 | 206.4 | 19.1 | 0 | 31.2 | 719 | 15 |
| Heine | 7053VT2PRIB ↗ | VT2P | 100 | 202.0 | 18.0 | 0 | 33.0 | 713 | 16 |
| Enestvedt | E665TRE ↗ | TRE | 97 | 199.2 | 18.4 | 0 | 28.3 | 700 | 17 |
| Thunder | T6498 PC ↗ | PCE | 98 | 198.7 | 18.3 | 0 | 29.0 | 699 | 18 |
| Jacobsen | JS9723TRE ↗ | TRE | 97 | 196.7 | 18.6 | 0 | 21.8 | 690 | 19 |
| Renk | RK586VT4P ↗ | VT4P | 99 | 196.6 | 18.5 | 0 | 29.0 | 690 | 20 |
| Augusta | A2350 ↗ | D | 100 | 194.8 | 19.7 | 0 | 26.1 | 675 | 24 |
| Enestvedt | E600DP RIB ↗ | VT2P | 99 | 194.6 | 17.7 | 0 | 33.3 | 689 | 21 |
| Legacy | LC-4248 SS ↗ | STX | 100 | 193.6 | 18.5 | 0 | 29.0 | 680 | 23 |
| Dairyland | DS-3881V ↗ | VE | 98 | 193.1 | 17.3 | 0 | 34.8 | 687 | 22 |
| Thunder | T6500 VT2P ↗ | VT2P | 100 | 190.3 | 18.9 | 0 | 31.9 | 665 | 26 |
| Pioneer | P97299Q GC ↗ | AQ | 97 | 190.1 | 19.5 | 0 | 30.9 | 659 | 29 |
| Heine | 7017SSPRIB ↗ | STXP | 100 | 189.9 | 18.8 | 0 | 24.7 | 664 | 27 |
| DeKalb | DKC99-11RIB GC ↗ | VT2P | 99 | 189.8 | 18.4 | 0 | 25.4 | 667 | 25 |
| Pioneer | P9955AM GC ↗ | AM | 97 | 189.5 | 20.0 | 0 | 29.7 | 654 | 30 |
| Heine | 7025VT2PRIB ↗ | VT2P | 100 | 188.2 | 18.1 | 0 | 33.3 | 664 | 28 |
| DEKALB | DKC43-75RIB CK | VT2P | 93 | 135.2 | 17.3 | 0 | 29.7 | 481 | 40 |
| | | | | Averages = | 195.2 | 18.5 | 29.9 | 686 | |
| | | | | LSD (0.10) = | 30.1 | 0.7 | ns | | |
| | | | | LSD (0.25) = | 15.8 | 0.4 | ns | | |
| | | | | C.V. = | 16.9 | | | | |
|  Matt Eich matt.eich@firstseedtests.com, (605) 690-8748 | | | | <div style="border: 1px solid black; padding: 2px; display: inline-block;"> Historic yield: 208.52 bu/a, 13 yr(s) </div> | | | | | |

Yield & Income Factors: Base Moisture = 15.0% Shrink = 1.3 Drying = \$0.04 Prices: GMO = \$3.65

Report Date: Nov. 1, 2024

† See last page for abbreviation descriptions. Dark colored row identifies the check product found in early- and full-season tests. **Bold** yields are significantly above test average by LSD(0.10). **Italicized** brands exceeded the grain moisture limit for this test. **ns** = column values not significantly different. ↗ Links to full product yield results at www.firstseedtests.com

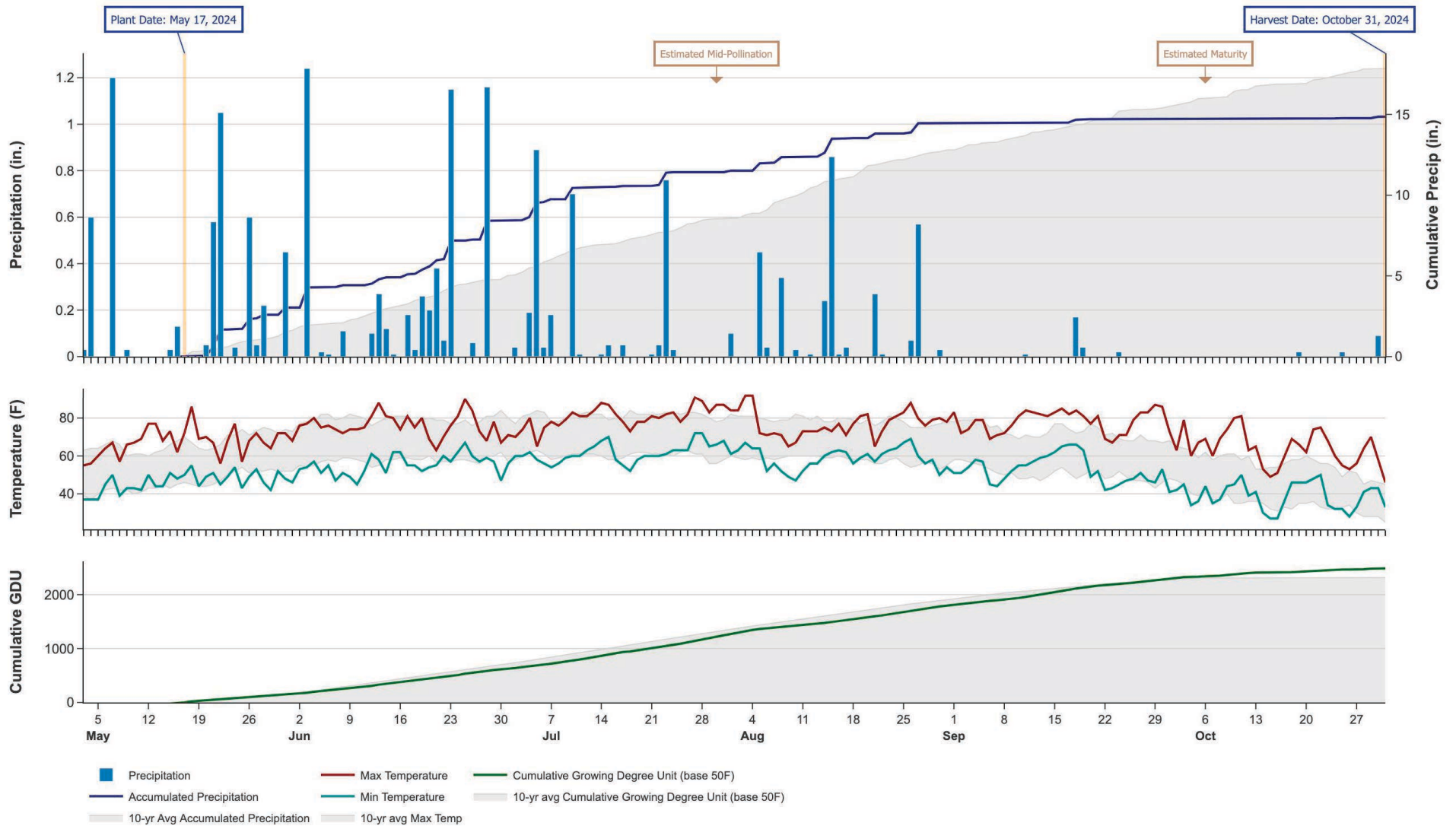
©2024, All rights reserved to Farmers' Independent Research of Seed Technologies, LLC.

Additional reports available at www.firstseedtests.com

2024 Corn - South Dakota Northeast [SDNE]

Weather Conditions Summary at WATERTOWN, SD

| Monthly Total | May* | Jun | Jul | Aug | Sep | Oct* | Total |
|----------------------|------------------|------------------|------------------|------------------|------------------|------------------|--------------------|
| Precip (in) (Diff) | 5.1 3.0 (+2.1) | 5.4 3.2 (+2.1) | 3.0 3.8 (-0.8) | 3.1 4.2 (-1.2) | 0.2 2.6 (-2.4) | 0.1 2.5 (-2.3) | 16.9 19.3 (-2.4) |
| GDU Avg (Diff) | 246 254 (-8) | 470 549 (-79) | 637 640 (-3) | 549 569 (-20) | 496 369 (+126) | 194 41 (+152) | 2592 2424 (+168) |



* First monthly total starts on the date 14 days prior to planting and final monthly total ends on the harvest date.

Note: Weather information from PRISM Climate Group. Data may be revised by the provider after retrieval. FIRST will not revise or update reports to reflect any weather data changes. For information purposes only.

2024 Corn - South Dakota Northeast [SDNE]

Early-Season Test Products (40 Total)

| Company/Brand | Product/Brand | Technology | RIB | RM | Seed Treat. |
|----------------|------------------|------------|-----|----|---------------|
| Augusta | A2140-AA | AA | N | 90 | CM,C2 |
| Augusta | A2244 | DV | Y | 94 | CM,C2 |
| Augusta | A2541-DV | DV | Y | 91 | CM,C2 |
| Dahlman | R45-250VT2PRIB | VT2P | Y | 90 | Treated |
| Dahlman | R47-245DGV2PRIB | VT2PDG | Y | 94 | Treated |
| Dahlman | R47-24VT2PRIB | VT2P | Y | 94 | Treated |
| Dahlman | R47-258VT2PRIB | VT2P | Y | 94 | Treated |
| Dahlman | R48-239VT2PRIB | VT2P | Y* | 95 | Treated |
| Dairyland | DS-3477AM | AM | Y | 94 | Lum,P5V |
| DeKalb | DKC41-54RIB GC | STXP | Y | 91 | AC,P5V,EDC-EL |
| DeKalb | DKC42-64RIB GC | STX | Y | 92 | AC,P5V,EDC-EL |
| DeKalb | DKC43-75RIB CK | VT2P | Y | 93 | AC,P5V |
| Enestvedt | E612RR | RR2 | N | 92 | CM,C2,Vi |
| Golden Harvest | G91V51-DV | DV | Y | 91 | AVC,C5,Vi,Va |
| Golden Harvest | G94U63-V | V | Y | 94 | CM,C5,Vi,Va |
| Heine | 6122VT2PRIB | VT2P | Y | 91 | F,I,B,NE,NU |
| Heine | 6215VT2PRIB | VT2P | Y* | 95 | F,I,B,NE,NU |
| Heine | 6330DGV2PRIB | VT2PDG | Y* | 95 | F,I,B,NE,NU |
| Heine | 6460VT2PRIB | VT2P | Y | 94 | F,I,B,NE,NU |
| Heine | 6561VT4PRIB | VT4P | Y | 95 | F,I,B,NE,NU |
| Integra | 4105 VT2PRIB | VT2P | Y | 91 | AC,P5V,St,SU |
| Integra | CX311096VT | VT2P | Y | 94 | Treated |
| Jacobsen | JS9053VT2P | VT2P | Y | 91 | Treated |
| Jacobsen | JS9414VT2P | VT2P | Y | 95 | Treated |
| Jacobsen | JS9494VT2P | VT2P | Y | 94 | Treated |
| Jacobsen | JS9542DGV2P | VT2PDG | Y | 95 | Treated |
| Jacobsen | JS9672VT2P | VT2P | Y | 95 | Treated |
| Legacy | LC414-21 SSX RIB | STX | Y | 91 | P5V |
| Pioneer | P9211AM GC | AM | Y | 92 | Lum |
| Pioneer | P9489Q GC | QR | Y | 94 | Lum, L1 |
| Renk | RK444VT2P | VT2P | Y* | 93 | AC,P2 |
| Renk | RK456VT2P | VT2P | N | 94 | AC,P5V,EDC-EL |
| Renk | RK485DGV2P | VT2PDG | Y* | 94 | AC,P2 |
| Renk | RK519VT4P | VT4P | N | 95 | AC,P5V,EDC-EL |
| Renk | RK561DGV2P | VT2PDG | Y* | 95 | AC,P2 |
| Thunder | T6294 VT2P | VT2PDG | Y | 94 | AC,P2 |
| Thunder | T6591 PC | PCE | Y | 91 | F,I |
| Thunder | T6592 VT2P | VT2P | Y | 92 | F,I |
| Thunder | T6695 VT2P | VT2P | Y | 95 | F,I |
| Thunder | T8592 SS | STX | Y | 92 | F,I |

* FIRST does not inspect products for refuge blend. N* indicates the product was entered without a refuge component by the sponsoring seed company. Prior year entries may contain refuge blend.

2024 Corn - South Dakota Northeast [SDNE]

Full-Season Test Products (40 Total)

| Company/Brand | Product/Brand | Technology | RIB | RM | Seed Treat. |
|----------------|----------------|------------|-----|-----|---------------|
| Augusta | A1946-AA | AA | N | 96 | CM,C2 |
| Augusta | A2350 | D | Y | 100 | CM,C2 |
| Chargen | VX-9631 | PCE | Y | 96 | CM,C2,Vi,Va |
| Chargen | VX-9931 | PCE | Y | 99 | CM,C2,Vi,Va |
| Dahlman | R49-29VT2PRIB | VT2P | Y | 98 | Treated |
| Dahlman | R50-252VT2PRIB | VT2P | Y | 100 | Treated |
| Dairyland | DS-3730V | VE | Y | 97 | Lum, L1 |
| Dairyland | DS-3881V | VE | Y | 98 | Lum, L1 |
| DeKalb | DKC43-75RIB CK | VT2P | Y | 93 | AC,P5V |
| DeKalb | DKC99-11RIB GC | VT2P | Y | 99 | AC,P5V,EDC-EL |
| Enestvedt | E600DP RIB | VT2P | Y | 99 | AC,P2 |
| Enestvedt | E654PCE | PCE | N | 96 | LumPro P2 |
| Enestvedt | E665TRE | TRE | Y | 97 | AC,P5V,EDC-EL |
| Golden Harvest | G97B68-DV | DV | Y | 97 | CM,C5,Vi,Va |
| Golden Harvest | G98U62-DV | DV | Y | 98 | CM,C1,Vi,Va |
| Heine | 6650TRERIB | TRE | N | 99 | F,I,B,NE,NU |
| Heine | 6760TRERIB | TRE | Y | 97 | F,I,B,NE,NU |
| Heine | 7017SSPRIB | STXP | Y | 100 | F,I,B,NE,NU |
| Heine | 7025VT2PRIB | VT2P | Y | 100 | F,I,B,NE,NU |
| Heine | 7053VT2PRIB | VT2P | Y | 100 | F,I,B,NE,NU |
| Integra | 4702 VT2PRIB | VT2P | Y | 97 | AC,P5V,St,SU |
| Integra | 4845PCE | PCE | Y | 98 | AC,P5V,St,SU |
| Integra | 5055 VT4PRIB | VT4P | Y | 100 | AC,P5V,St,SU |
| Jacobsen | JS0063VT4P | VT4P | Y | 100 | Treated |
| Jacobsen | JS0083VT2P | VT2P | Y | 100 | Treated |
| Jacobsen | JS9723TRE | TRE | Y | 97 | Treated |
| Jacobsen | JS9904SS | STX | Y | 98 | Treated |
| Legacy | LC-4248 SS | STX | Y | 100 | P5V |
| Pioneer | P97299Q GC | AQ | Y | 97 | Lum, L1 |
| Pioneer | P9955AM GC | AM | Y | 97 | Lum, L1 |
| Renk | RK579DGV2P | VT2PDG | Y | 99 | AC,P2 |
| Renk | RK582SSSTX | STX | Y* | 98 | AC,P5V,EDC-EL |
| Renk | RK586VT4P | VT4P | N | 99 | AC,P5V,EDC-EL |
| Renk | RK597SSPRO | STXP | Y* | 99 | AC,P5V,EDC-EL |
| Renk | RK630TRE | TRE | N | 100 | AC,P2 |
| Thunder | T6298 VT2P | VT2P | Y | 98 | AC,P5V,Va |
| Thunder | T6498 PC | PCE | N | 98 | CM,C2,Vi,Va |
| Thunder | T6500 VT2P | VT2P | Y | 100 | AC,P2 |
| Thunder | T8396 SS | STX | Y | 96 | AC,P5 |
| Thunder | T8598 SS | STX | Y | 98 | F,I |

* FIRST does not inspect products for refuge blend. N* indicates the product was entered without a refuge component by the sponsoring seed company. Prior year entries may contain refuge blend.

Footnotes and Abbreviations Descriptions

Brand Footnotes

| | |
|----|--|
| CK | Identifies a check product included in early- and full-season tests. |
| GC | Grower Comparison product included by FIRST when space permits. |
| ^ | Innotech™ brand seed is distributed by Rob-See-Co, LLC. Innotech™ is a trademark of Syngenta. Power Plus® brand seed is distributed by Burrus. Power Plus® is a registered trademark of Corteva Agriscience. |

Corn Technologies

| | |
|--------|---|
| AA | Agrisure® Above (CB,HX,LL,GT), formerly Agrisure® 3120 |
| AM | Optimum® AcreMax® |
| AQ | Optimum® AQUAmax® |
| D | Duracade™ (CB,HX,RW,RW2,LL,GT), formerly Agrisure Duracade® 5122 |
| DV | DuracadeViptera™ (Vip,CB,HX,RW,RW2,LL,GT), formerly Agrisure Duracade® 5222 |
| PCE | PowerCore® Enlist® |
| QR | Qrome® |
| RR2 | Roundup Ready® 2 Corn |
| STX | SmartStax® |
| STXP | SmartStax® Pro with RNAi Technology |
| TRE | Trecepta® |
| V | Viptera™ (Vip,CB,HX,LL,GT), formerly Agrisure Viptera® 3220 |
| VE | Vorceed™ Enlist® |
| VT2P | VT Double PRO® |
| VT2PDG | DroughtGard® with VT Double PRO® |
| VT4P | VT4Pro™ with RNAi Technology |

NOTE: The refuge component genetics may vary in a refuge blend seed product.

Corn Seed Treatments*

| | |
|---------------|--|
| NA | Not Available |
| AC,P2 | Acceleron® 250 |
| AC,P5 | Acceleron® 500 |
| AC,P5V | Acceleron® Poncho 500/Votivo |
| AC,P5V,EDC-EL | Acceleron® ELITE Poncho 500/Votivo with Enhanced Disease Control |
| AC,P5V,St,SU | Acceleron® Poncho 500/Votivo, Stamina, StepUp |
| AC,P5V,Va | Acceleron® Poncho 500/Votivo, Vayantis® |
| AVC,C5,Vi,Va | Avicta Complete 500, Vibrance, Vayantis |
| CM,C1,Vi,Va | CruiserMaxx® 1250 with Vibrance, Vayantis® |
| CM,C2 | CruiserMaxx® 250 |
| CM,C2,Vi | CruiserMaxx® 250 with Vibrance |
| CM,C2,Vi,Va | CruiserMaxx® 250 with Vibrance, Vayantis® |
| CM,C5,Vi,Va | CruiserMaxx® 500 with Vibrance, Vayantis® |
| F,I | Fungicide, Insecticide |
| F,I,B,NE,NU | Fungicide, Insecticide, Biological, Nematicide, Nutrition |
| Lum | LumiGEN™ (Corteva Agriscience) |
| Lum, L1 | LumiGEN, Lumisure 1250 |
| Lum,P5V | LumiGEN™ Poncho 500/Votivo |
| LumPro P2 | Lumiscend Pro /Lumiflex fungicide, L-2012R bio-fungicide, Lumisure 250/ Lumivia250 insecticide, Lumialza nematicide |
| P5V | Poncho 500/Votivo |
| Treated | Treated seed, unspecified |

* Seed treatments may include unspecified plant health promoting components.