

Test by: Centrol Crop Consulting Volga, SD

2024 Corn Grain Top 30 Harvest Report

South Dakota Northeast [SDNE] BRUCE, SD
Logan Triebwasser, Brookings County, SD

Early-Season Test	91 - 95 Day CRM B2024SDNE05a
Top 30 of 40	For Gross Income (Sorted by Yield) Average of (4) Replications
PREV. CROP/HERB:	Soybeans / Sonic, Metribuzin, Enlist, Liberty
SOIL DESCRIPTION:	Poinsett-Buse-Waubay Complex silty clay loam, well drained, non-irrigated
SOIL CONDITION:	Conventional W/ Fall Till, medium P, medium K, 5.8 pH, 5.1% OM, 21.7 CEC
PEST MANAGEMENT:	Harness Xtra, Explorer, Ag Saver, Ams
FERTILITY - Applied N:	140 Spring, 7 units Sulfur as AMS
Applied N-P-K (units):	140-90-25
SEEDED - RATE - ROW:	May 20 32.5 /A 30" spacing
HARVESTED - STAND:	Oct 30 31.9 /A

TEST COMMENTS:

Although planted on the late side this field yielded very well. We did have some lodging from rootworm pressure. All lodged hybrids were able to be picked up without issues. The field was very clean and looked really good all year.

Company/Brand	Product/Brand	Technol.†	RM	Yield Bu/A ↓	Moisture %	Lodging %	Stand (x 1000)	Gross Income \$/Acre	Rank
Integra	CX311096VT ↗	VT2P	94	221.7	16.9	8	31.9	792	1
Jacobsen	JS9414VT2P ↗	VT2P	95	214.8	16.6	0	32.4	770	2
Heine	6561VT4PRIB ↗	VT4P	95	209.1	16.7	0	31.9	749	4
Renk	RK456VT2P ↗	VT2P	94	208.7	16.4	2	32.7	750	3
Heine	6330DGV2PRIB ↗	VT2PDG	95	207.8	16.8	9	31.9	744	5
Thunder	T6591 PC ↗	PCE	91	205.6	16.4	2	31.9	739	6
DeKalb	DKC41-54RIB GC ↗	STXP	91	204.8	16.5	0	31.9	735	7
Pioneer	P9489Q GC ↗	QR	94	204.8	17.3	0	31.2	728	9
Dahlman	R47-24VT2PRIB ↗	VT2P	94	203.8	16.8	8	31.9	729	8
Renk	RK519VT4P ↗	VT4P	95	203.8	16.9	0	31.9	728	10
Dahlman	R48-239VT2PRIB ↗	VT2P	95	201.6	17.0	22	31.9	720	11
Heine	6122VT2PRIB ↗	VT2P	91	197.5	16.3	0	31.9	711	12
Golden Harvest	G94U63-V ↗	V	94	196.2	17.8	0	31.9	694	16
Thunder	T8592 SS ↗	STX	92	195.7	16.5	0	31.9	703	13
Dairyland	DS-3477AM ↗	AM	94	194.7	16.3	0	32.3	701	14
Dahlman	R47-258VT2PRIB ↗	VT2P	94	194.0	16.4	0	32.3	697	15
Augusta	A2541-DV ↗	DV	91	192.4	17.8	6	31.9	681	22
Dahlman	R47-245DGV2PRIB ↗	VT2PDG	94	191.8	17.0	9	31.5	685	21
Golden Harvest	G91V51-DV ↗	DV	91	191.5	17.8	0	31.5	678	23
Heine	6460VT2PRIB ↗	VT2P	94	191.4	16.2	6	32.3	690	17
Renk	RK444VT2P ↗	VT2P	93	191.1	16.4	0	31.9	687	19
Pioneer	P9211AM GC ↗	AM	92	190.7	16.2	0	32.3	687	20
Renk	RK485DGV2P ↗	VT2PDG	94	190.0	17.5	21	32.3	675	24
Jacobsen	JS9542DGV2P ↗	VT2PDG	95	190.0	18.0	19	31.9	671	27
Jacobsen	JS9672VT2P ↗	VT2P	95	187.5	16.6	16	31.5	673	25
Augusta	A2140-AA ↗	AA	90	186.9	16.2	6	31.5	673	26
Heine	6215VT2PRIB ↗	VT2P	95	185.6	17.4	0	31.9	660	29
Dahlman	R45-250VT2PRIB ↗	VT2P	90	183.2	16.1	36	31.2	661	28
Integra	4105 VT2PRIB ↗	VT2P	91	183.1	16.5	0	31.9	658	30
Thunder	T6592 VT2P ↗	VT2P	92	182.6	16.3	0	31.9	657	31
DEKALB	DKC43-75RIB CK	VT2P	93	191.3	16.3	0	31.2	689	18
				Averages =	190.7	16.7	6	31.9	685
				LSD (0.10) =	17.1	0.5	11		
				LSD (0.25) =	9.0	0.3	6		
				C.V. =	9.8				
Matt Eich				Historic yield: new site					
matt.eich@firstseedtests.com, (605) 690-8748									

Yield & Income Factors: Base Moisture = 15.0% Shrink = 1.3 Drying = \$0.04 Prices: GMO = \$3.65

Report Date: Oct. 31, 2024

† See last page for abbreviation descriptions. Dark colored row identifies the check product found in early- and full-season tests. **Bold** yields are significantly above test average by LSD(0.10). **Italicized** brands exceeded the grain moisture limit for this test. **ns** = column values not significantly different. ↗ Links to full product yield results at www.firstseedtests.com

©2024, All rights reserved to Farmers' Independent Research of Seed Technologies, LLC.

Additional reports available at www.firstseedtests.com

Test by: Centrol Crop Consulting Volga, SD


2024 Corn Grain Top 30 Harvest Report

South Dakota Northeast [SDNE] BRUCE, SD
Logan Triebwasser, Brookings County, SD

Full-Season Test	96 - 100 Day CRM B2024SDNE05b
Top 30 of 40	For Gross Income (Sorted by Yield) Average of (4) Replications
PREV. CROP/HERB:	Soybeans / Sonic, Metribuzin, Enlist, Liberty
SOIL DESCRIPTION:	Poinsett-Buse-Waubay Complex silty clay loam, well drained, non-irrigated
SOIL CONDITION:	Conventional W/ Fall Till, medium P, medium K, 5.8 pH, 5.1% OM, 21.7 CEC
PEST MANAGEMENT:	Harness Xtra, Explorer, Ag Saver, Ams
FERTILITY - Applied N:	140 Spring, 7 units Sulfur as AMS
Applied N-P-K (units):	140-90-25
SEDED - RATE - ROW:	May 20 32.5 /A 30" spacing
HARVESTED - STAND:	Oct 30 31.9 /A

TEST COMMENTS:

Although planted on the late side this field yielded very well. We did have some lodging from rootworm pressure. All lodged hybrids were able to be picked up without issues. The field was very clean and looked really good all year.

Company/Brand	Product/Brand	Technol.†	RM	Yield Bu/A ↓	Moisture %	Lodging %	Stand (x 1000)	Gross Income \$/Acre	Rank
Integra	5055 VT4PRIB ↗	VT4P	100	238.8	18.2	0	31.9	841	1
Thunder	T6298 VT2P ↗	VT2P	98	219.5	16.6	6	31.9	787	2
Dairyland	DS-3730V ↗	VE	97	219.5	17.0	0	32.3	783	3
Jacobsen	JS0063VT4P ↗	VT4P	100	217.7	17.5	0	31.5	773	4
Thunder	T8598 SS ↗	STX	98	215.2	16.9	0	31.5	769	6
Renk	RK630TRE ↗	TRE	100	214.9	16.4	2	31.9	772	5
Heine	7053VT2PRIB ↗	VT2P	100	211.3	16.5	15	31.9	759	7
Renk	RK597SSPRO ↗	STXP	99	211.1	16.8	0	31.9	755	8
Heine	7017SSPRIB ↗	STXP	100	208.9	17.0	0	32.7	746	9
DeKalb	DKC99-11RIB GC ↗	VT2P	99	207.1	17.3	0	31.5	736	10
Renk	RK582SSTX ↗	STX	98	203.8	16.4	0	31.5	732	11
Heine	6650TRERIB ↗	TRE	99	201.2	17.0	0	32.3	718	13
Heine	6760TRERIB ↗	TRE	97	200.8	16.6	11	30.9	720	12
Enestvedt	E654PCE ↗	PCE	96	200.3	17.3	9	31.5	713	15
Renk	RK586VT4P ↗	VT4P	99	199.3	17.0	0	31.5	712	16
Renk	RK579DGV2P ↗	VT2PDG	99	199.1	16.7	0	32.3	714	14
Legacy	LC-4248 SS ↗	STX	100	197.3	16.9	0	31.9	705	18
Integra	4702 VT2PRIB ↗	VT2P	97	195.3	16.4	6	32.7	702	19
Jacobsen	JS0083VT2P ↗	VT2P	100	194.6	16.6	0	31.9	698	20
Augusta	A2350 ↗	D	100	194.4	18.7	0	31.6	681	26
Golden Harvest	G98U62-DV ↗	DV	98	193.9	16.5	0	32.3	696	22
Heine	7025VT2PRIB ↗	VT2P	100	193.3	16.8	6	31.9	692	23
Pioneer	P9955AM GC ↗	AM	97	193.2	17.4	0	31.9	686	24
Dairyland	DS-3881V ↗	VE	98	192.6	15.7	0	31.2	698	21
Pioneer	P97299Q GC ↗	AQ	97	189.3	18.0	0	31.9	669	27
Thunder	T6500 VT2P ↗	VT2P	100	188.8	15.9	9	31.9	682	25
Thunder	T6498 PC ↗	PCE	98	187.0	17.1	0	32.7	667	28
Augusta	A1946-AA ↗	AA	96	183.4	16.7	0	32.3	657	29
Chargen	VX-9631 ↗	PCE	96	182.4	17.2	9	31.5	650	30
Dahlman	R49-29VT2PRIB ↗	VT2P	98	181.4	16.7	0	32.3	650	31
DEKALB	DKC43-75RIB CK	VT2P	93	198.4	16.7	12	32.3	711	17
				Averages =	194.6	16.9	4	31.9	695
				LSD (0.10) =	20.6	0.7	ns		
				LSD (0.25) =	10.8	0.4	ns		
				C.V. =	11.6				
 Matt Eich matt.eich@firstseedtests.com, (605) 690-8748				Historic yield: new site					

Yield & Income Factors: Base Moisture = 15.0% Shrink = 1.3 Drying = \$0.04 Prices: GMO = \$3.65

Report Date: Oct. 31, 2024

† See last page for abbreviation descriptions. Dark colored row identifies the check product found in early- and full-season tests. **Bold** yields are significantly above test average by LSD(0.10). **Italicized** brands exceeded the grain moisture limit for this test. **ns** = column values not significantly different. ↗ Links to full product yield results at www.firstseedtests.com

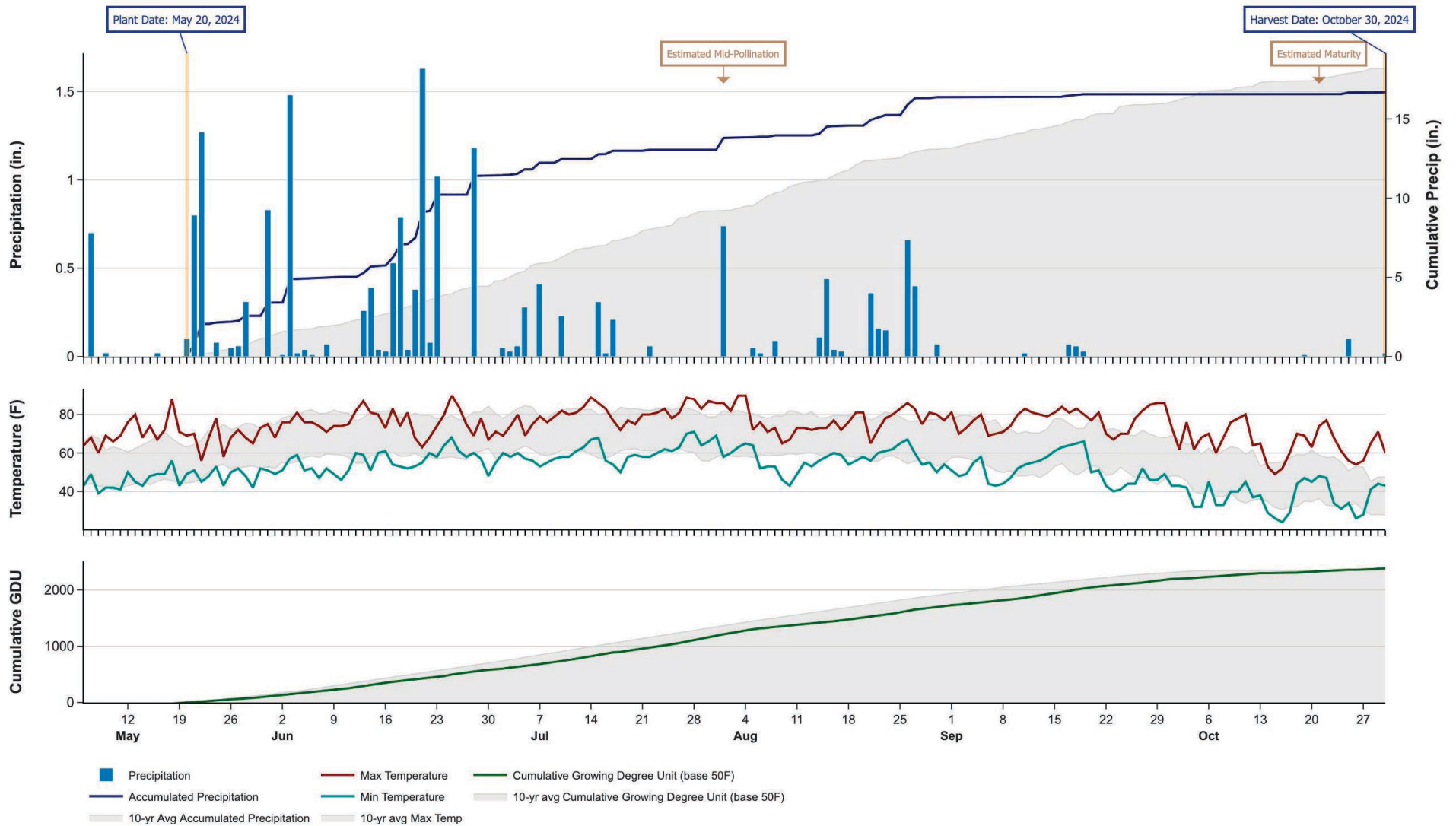
©2024, All rights reserved to Farmers' Independent Research of Seed Technologies, LLC.

Additional reports available at www.firstseedtests.com

2024 Corn - South Dakota Northeast [SDNE]

Weather Conditions Summary at BRUCE, SD

Monthly Total	May*	Jun	Jul	Aug	Sep	Oct*	Total
Precip (in) (Diff)	4.2 3.1 (+1.1)	8.0 3.2 (+4.8)	1.7 4.8 (-3.1)	3.3 3.9 (-0.6)	0.2 2.8 (-2.6)	0.1 2.2 (-2.1)	17.5 20.1 (-2.5)
GDU Avg (Diff)	258 247 (+10)	470 566 (-96)	615 647 (-32)	523 574 (-51)	470 383 (+86)	198 45 (+152)	2534 2464 (+69)



* First monthly total starts on the date 14 days prior to planting and final monthly total ends on the harvest date.

Note: Weather information from PRISM Climate Group. Data may be revised by the provider after retrieval. FIRST will not revise or update reports to reflect any weather data changes. For information purposes only.

2024 Corn - South Dakota Northeast [SDNE]

Early-Season Test Products (40 Total)

Company/Brand	Product/Brand	Technology	RIB	RM	Seed Treat.
Augusta	A2140-AA	AA	N	90	CM,C2
Augusta	A2244	DV	Y	94	CM,C2
Augusta	A2541-DV	DV	Y	91	CM,C2
Dahlman	R45-250VT2PRIB	VT2P	Y	90	Treated
Dahlman	R47-245DGV2PRIB	VT2PDG	Y	94	Treated
Dahlman	R47-24VT2PRIB	VT2P	Y	94	Treated
Dahlman	R47-258VT2PRIB	VT2P	Y	94	Treated
Dahlman	R48-239VT2PRIB	VT2P	Y*	95	Treated
Dairyland	DS-3477AM	AM	Y	94	Lum,P5V
DeKalb	DKC41-54RIB GC	STXP	Y	91	AC,P5V,EDC-EL
DeKalb	DKC42-64RIB GC	STX	Y	92	AC,P5V,EDC-EL
DeKalb	DKC43-75RIB CK	VT2P	Y	93	AC,P5V
Enestvedt	E612RR	RR2	N	92	CM,C2,Vi
Golden Harvest	G91V51-DV	DV	Y	91	AVC,C5,Vi,Va
Golden Harvest	G94U63-V	V	Y	94	CM,C5,Vi,Va
Heine	6122VT2PRIB	VT2P	Y	91	F,I,B,NE,NU
Heine	6215VT2PRIB	VT2P	Y*	95	F,I,B,NE,NU
Heine	6330DGV2PRIB	VT2PDG	Y*	95	F,I,B,NE,NU
Heine	6460VT2PRIB	VT2P	Y	94	F,I,B,NE,NU
Heine	6561VT4PRIB	VT4P	Y	95	F,I,B,NE,NU
Integra	4105 VT2PRIB	VT2P	Y	91	AC,P5V,St,SU
Integra	CX311096VT	VT2P	Y	94	Treated
Jacobsen	JS9053VT2P	VT2P	Y	91	Treated
Jacobsen	JS9414VT2P	VT2P	Y	95	Treated
Jacobsen	JS9494VT2P	VT2P	Y	94	Treated
Jacobsen	JS9542DGV2P	VT2PDG	Y	95	Treated
Jacobsen	JS9672VT2P	VT2P	Y	95	Treated
Legacy	LC414-21 SSX RIB	STX	Y	91	P5V
Pioneer	P9211AM GC	AM	Y	92	Lum
Pioneer	P9489Q GC	QR	Y	94	Lum, L1
Renk	RK444VT2P	VT2P	Y*	93	AC,P2
Renk	RK456VT2P	VT2P	N	94	AC,P5V,EDC-EL
Renk	RK485DGV2P	VT2PDG	Y*	94	AC,P2
Renk	RK519VT4P	VT4P	N	95	AC,P5V,EDC-EL
Renk	RK561DGV2P	VT2PDG	Y*	95	AC,P2
Thunder	T6294 VT2P	VT2PDG	Y	94	AC,P2
Thunder	T6591 PC	PCE	Y	91	F,I
Thunder	T6592 VT2P	VT2P	Y	92	F,I
Thunder	T6695 VT2P	VT2P	Y	95	F,I
Thunder	T8592 SS	STX	Y	92	F,I

* FIRST does not inspect products for refuge blend. N* indicates the product was entered without a refuge component by the sponsoring seed company. Prior year entries may contain refuge blend.

2024 Corn - South Dakota Northeast [SDNE]

Full-Season Test Products (40 Total)

Company/Brand	Product/Brand	Technology	RIB	RM	Seed Treat.
Augusta	A1946-AA	AA	N	96	CM,C2
Augusta	A2350	D	Y	100	CM,C2
Chargen	VX-9631	PCE	Y	96	CM,C2,Vi,Va
Chargen	VX-9931	PCE	Y	99	CM,C2,Vi,Va
Dahlman	R49-29VT2PRIB	VT2P	Y	98	Treated
Dahlman	R50-252VT2PRIB	VT2P	Y	100	Treated
Dairyland	DS-3730V	VE	Y	97	Lum, L1
Dairyland	DS-3881V	VE	Y	98	Lum, L1
DeKalb	DKC43-75RIB CK	VT2P	Y	93	AC,P5V
DeKalb	DKC99-11RIB GC	VT2P	Y	99	AC,P5V,EDC-EL
Enestvedt	E600DP RIB	VT2P	Y	99	AC,P2
Enestvedt	E654PCE	PCE	N	96	LumPro P2
Enestvedt	E665TRE	TRE	Y	97	AC,P5V,EDC-EL
Golden Harvest	G97B68-DV	DV	Y	97	CM,C5,Vi,Va
Golden Harvest	G98U62-DV	DV	Y	98	CM,C1,Vi,Va
Heine	6650TRERIB	TRE	N	99	F,I,B,NE,NU
Heine	6760TRERIB	TRE	Y	97	F,I,B,NE,NU
Heine	7017SSPRIB	STXP	Y	100	F,I,B,NE,NU
Heine	7025VT2PRIB	VT2P	Y	100	F,I,B,NE,NU
Heine	7053VT2PRIB	VT2P	Y	100	F,I,B,NE,NU
Integra	4702 VT2PRIB	VT2P	Y	97	AC,P5V,St,SU
Integra	4845PCE	PCE	Y	98	AC,P5V,St,SU
Integra	5055 VT4PRIB	VT4P	Y	100	AC,P5V,St,SU
Jacobsen	JS0063VT4P	VT4P	Y	100	Treated
Jacobsen	JS0083VT2P	VT2P	Y	100	Treated
Jacobsen	JS9723TRE	TRE	Y	97	Treated
Jacobsen	JS9904SS	STX	Y	98	Treated
Legacy	LC-4248 SS	STX	Y	100	P5V
Pioneer	P97299Q GC	AQ	Y	97	Lum, L1
Pioneer	P9955AM GC	AM	Y	97	Lum, L1
Renk	RK579DGV2P	VT2PDG	Y	99	AC,P2
Renk	RK582SSSTX	STX	Y*	98	AC,P5V,EDC-EL
Renk	RK586VT4P	VT4P	N	99	AC,P5V,EDC-EL
Renk	RK597SSPRO	STXP	Y*	99	AC,P5V,EDC-EL
Renk	RK630TRE	TRE	N	100	AC,P2
Thunder	T6298 VT2P	VT2P	Y	98	AC,P5V,Va
Thunder	T6498 PC	PCE	N	98	CM,C2,Vi,Va
Thunder	T6500 VT2P	VT2P	Y	100	AC,P2
Thunder	T8396 SS	STX	Y	96	AC,P5
Thunder	T8598 SS	STX	Y	98	F,I

* FIRST does not inspect products for refuge blend. N* indicates the product was entered without a refuge component by the sponsoring seed company. Prior year entries may contain refuge blend.

Footnotes and Abbreviations Descriptions

Brand Footnotes

CK	Identifies a check product included in early- and full-season tests.
GC	Grower Comparison product included by FIRST when space permits.
^	Innotech™ brand seed is distributed by Rob-See-Co, LLC. Innotech™ is a trademark of Syngenta. Power Plus® brand seed is distributed by Burrus. Power Plus® is a registered trademark of Corteva Agriscience.

Corn Technologies

AA	Agrisure® Above (CB,HX,LL,GT), formerly Agrisure® 3120
AM	Optimum® AcreMax®
AQ	Optimum® AQUAmax®
D	Duracade™ (CB,HX,RW,RW2,LL,GT), formerly Agrisure Duracade® 5122
DV	DuracadeViptera™ (Vip,CB,HX,RW,RW2,LL,GT), formerly Agrisure Duracade® 5222
PCE	PowerCore® Enlist®
QR	Qrome®
RR2	Roundup Ready® 2 Corn
STX	SmartStax®
STXP	SmartStax® Pro with RNAi Technology
TRE	Trecepta®
V	Viptera™ (Vip,CB,HX,LL,GT), formerly Agrisure Viptera® 3220
VE	Vorceed™ Enlist®
VT2P	VT Double PRO®
VT2PDG	DroughtGard® with VT Double PRO®
VT4P	VT4Pro™ with RNAi Technology

NOTE: The refuge component genetics may vary in a refuge blend seed product.

Corn Seed Treatments*

NA	Not Available
AC,P2	Acceleron® 250
AC,P5	Acceleron® 500
AC,P5V	Acceleron® Poncho 500/Votivo
AC,P5V,EDC-EL	Acceleron® ELITE Poncho 500/Votivo with Enhanced Disease Control
AC,P5V,St,SU	Acceleron® Poncho 500/Votivo, Stamina, StepUp
AC,P5V,Va	Acceleron® Poncho 500/Votivo, Vayantis®
AVC,C5,Vi,Va	Avicta Complete 500, Vibrance, Vayantis
CM,C1,Vi,Va	CruiserMaxx® 1250 with Vibrance, Vayantis®
CM,C2	CruiserMaxx® 250
CM,C2,Vi	CruiserMaxx® 250 with Vibrance
CM,C2,Vi,Va	CruiserMaxx® 250 with Vibrance, Vayantis®
CM,C5,Vi,Va	CruiserMaxx® 500 with Vibrance, Vayantis®
F,I	Fungicide, Insecticide
F,I,B,NE,NU	Fungicide, Insecticide, Biological, Nematicide, Nutrition
Lum	LumiGEN™ (Corteva Agriscience)
Lum, L1	LumiGEN, Lumisure 1250
Lum,P5V	LumiGEN™ Poncho 500/Votivo
LumPro P2	Lumiscend Pro /Lumiflex fungicide, L-2012R bio-fungicide, Lumisure 250/ Lumivia250 insecticide, Lumialza nematicide
P5V	Poncho 500/Votivo
Treated	Treated seed, unspecified

* Seed treatments may include unspecified plant health promoting components.