

Test by: Southern MN FIRST New Richland, MN

2024 Soybeans Top 30 Harvest Report

Minnesota South Central [MNSC] WABASSO, MN

Leon Plaetz, Redwood County, MN 56293

All-Season Test	Maturity Group 1.5 - 2.2 S2024MNSC10
Top 30 of 48	For Gross Income (Sorted by Yield) Average of (3) Replications
PREV. CROP/HERB:	Corn / Harness, Callisto, Roundup
SOIL DESCRIPTION:	Canisteo clay loam, mod. poorly drained, non-irrigated
SOIL CONDITION:	very high P, very high K, 7.0 pH, 3.4% OM, 20.5 CEC
TILLAGE/CULTIVATION:	Conventional W/ Fall Till
PEST MANAGEMENT:	Zidua, Roundup, Liberty, Fusilade
FERTILITY - Applied N:	None
Applied N-P-K (units):	0-0-0
SEEDED - RATE - ROW:	May 18 140.0 /A 30" spacing
HARVESTED - STAND:	Oct 5 123.4 /A

TEST COMMENTS:

Soil was quite fit at planting. The soybeans took a long time to hit a good growth spurt, as rain kept soils waterlogged after planting through June. Unfortunately, this plot data was compromised due to an unseen error when planting. Row 3 did not clean out after planting each 50' long plot. This caused carryover seed to contaminate every plot at the site. The computer software that drives this planter did not show the error, so there was no way to see the problem. I tried to harvest two rows for yield data, but could not get enough grain in the scale to record moisture from any plots. Harvest data was rejected due to seed mixing across plots.

Company/Brand	Product/Brand	Yield 1	Mo	Shr	Yield Bu/a	Moisture %	Logging %	Stand (x 1000)	Gross Income \$/acre	Rank
Golden Harvest	GD22003 g +	83	2.2	W	88.8	10.4	0	123.7	680	1
Agrium	AG20073 g +	80F	1.8	R	88.8	9.8	0	124.3	640	2
Danisco	DNA-21000 +	83	2.2	W	88.8	10.1	0	123.7	630	3
Danisco	GD1800 +	83	2.1	W	88.8	10.8	0	124.7	630	4
Danisco	DNA-21100 +	83	2.1	PH	89.8	10.1	0	123.5	625	5
Danisco	GD1800 +	83	1.7	R	89.8	10.8	0	123.3	610	6
Danisco	DNA-20000 +	83	2.0	W	89.8	9.8	0	123.7	610	7
Top Pro	TP 18020 +	83	1.8	W	89.8	9.8	0	123.3	610	8
Alamo	NO 18000 +	83	2.0	PH	89.8	10.1	0	123.0	610	9
Futura	18000 +	83	2.0	PH	89.8	10.1	0	123.7	600	10
Agrium	AG20074 g +	79F	1.7	R	89.8	10.2	0	123.0	600	11
Alamo	20000 g +	83	2.2	W	89.8	9.8	0	123.7	600	12
Golden Harvest	GD20007 g +	83	2.0	W	89.8	9.1	0	123.3	600	13
Alamo	AG1800 +	83	1.8	W	89.7	10.2	0	123.0	600	14
Phonix	PH20000 g +	83	1.8	W	89.8	10.1	0	123.7	600	15
Anderson	A18003 +	83	1.8	PH	89.3	10.4	0	123.3	600	16
Anderson	A18003 +	83	1.8	PH	89.3	10.7	0	124.7	600	17
Alamo	NO 20700 +	83	2.0	PH	89.3	10.8	0	123.3	600	18
Agrium	AG1800 +	83	1.8	R	89.1	10.8	0	121.7	600	19
Alamo	NO 18000 +	83	1.8	W	89.0	10.1	0	121.7	600	20
Danisco	GD1800 +	83	1.8	PH	87.8	10.7	0	123.7	600	21
Danisco	GD1800 +	83	1.8	W	87.8	9.8	0	124.0	600	22
Alamo	20000 g +	83	2.0	W	87.8	10.7	0	124.7	600	23
Phonix	PH20000 g +	83	1.8	PH	87.8	10.8	0	124.0	600	24
Alamo	NO 18000 +	83	1.8	W	87.0	10.8	0	122.7	670	25
Danisco	GD1800 +	83	1.8	R	87.0	10.8	0	121.7	670	26
Anderson	A18003 +	83	1.7	W	86.8	9.8	0	124.7	677	27
Futura	18000 +	83	1.8	PH	86.8	10.3	0	123.3	674	28
Anderson	A18003 +	83	1.8	PH	86.2	10.8	0	119.7	671	29
Alamo	NO 18000F +	80F	1.8	W	85.8	9.8	0	124.7	607	30

REJECTED

Mark Querna

Mark Querna

mark.querna@firstseedtests.com, (507) 380-9920

Averages =	47.0	10.0		123.4	480
LSD (0.10) =	4.1	0.3	ns		
LSD (0.25) =	2.1	0.2	ns		
C.V. =	8.2			Historic yield: 55.36 bu/a, 18 yr(s)	

Yield & Income Factors: Base Moisture = 13.0% Shrink = 1.0 Drying = \$0.02 Prices: GMO = \$10.20; non-GMO = \$13.70

Report Date: Oct. 7, 2024

Additional reports available at www.firstseedtests.com

† See last page for abbreviation descriptions. Dark colored row identifies the check product found in early- and full-season tests. **Bold** yields are significantly above test average by LSD(0.10). **Italicized** brands exceed the grain moisture limit for this test. **ns** = column values not significantly different. ↗ Links to full product yield results at www.firstseedtests.com

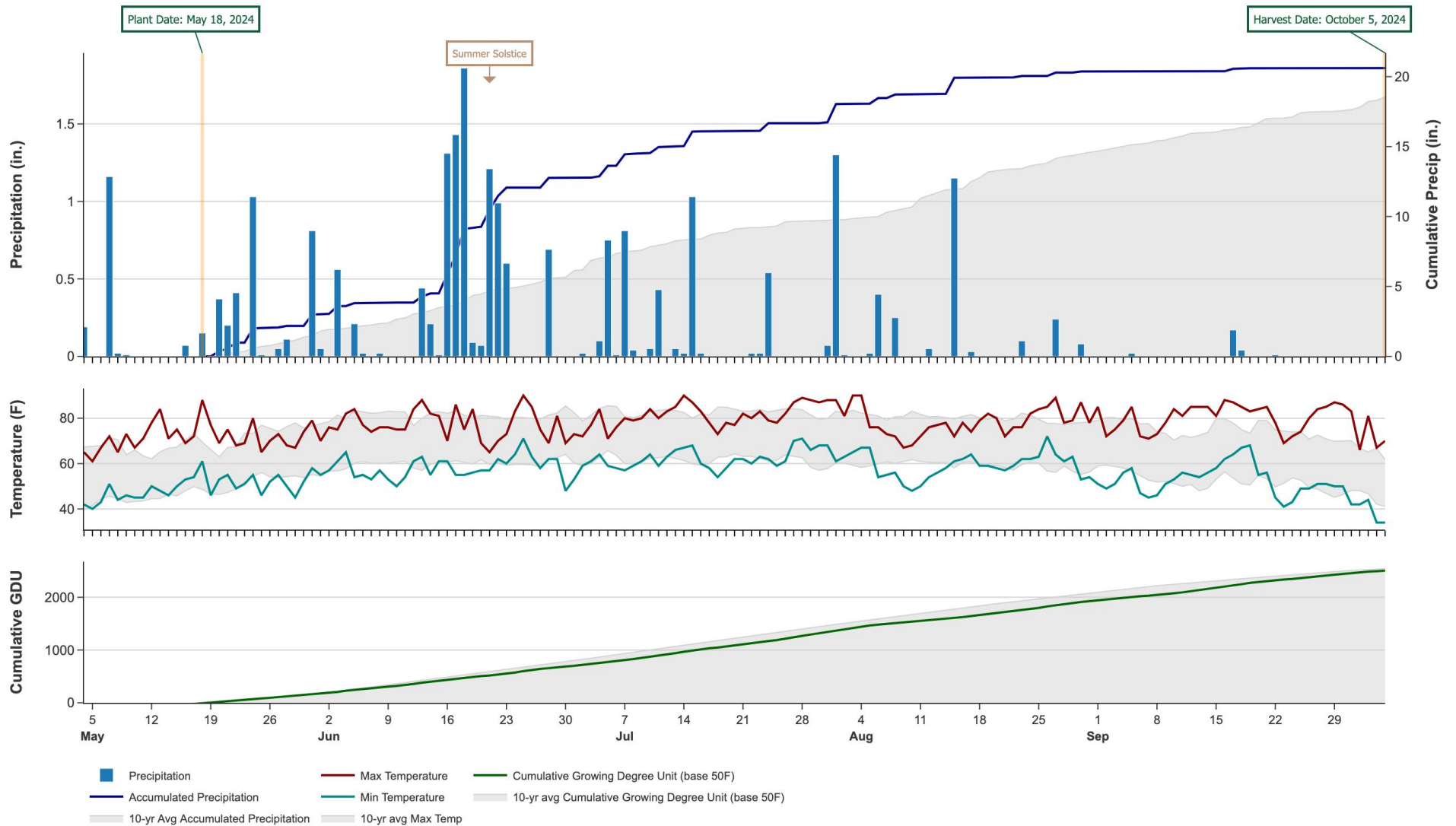
©2024, All rights reserved to Farmers' Independent Research of Seed Technologies, LLC.

2024 Soybeans - Minnesota South Central [MNSC]

Weather Conditions Summary at WABASSO, MN

Weather Data Retrieved: 10/07/2024

Monthly Total	May*	Jun	Jul	Aug	Sep	Oct*	Total
Precip (in) (Diff)	4.6 3.8 (+0.8)	9.8 4.2 (+5.6)	4.0 4.1 (-0.1)	3.6 4.9 (-1.2)	0.2 3.0 (-2.7)	0.0 1.0 (-1.0)	22.2 20.8 (+1.4)
GDU Avg (Diff)	330 296 (+33)	530 615 (-85)	660 684 (-24)	580 613 (-33)	518 421 (+96)	58 40 (+17)	2676 2671 (+4)



* First monthly total starts on the date 14 days prior to planting and final monthly total ends on the harvest date.

Note: Weather information from PRISM Climate Group. Data may be revised by the provider after retrieval. FIRST will not revise or update reports to reflect any weather data changes. For information purposes only.

2024 Soybeans - Minnesota South Central [MNSC]

All-Season Test Products (48 Total)

Company/Brand	Product/Brand	Technology	SCN	RM	Seed Treat.
Anderson	A154E3	E3	PK	1.5	Untreated
Anderson	A174E3	E3	M	1.7	Untreated
Anderson	A184E3	E3	PK	1.8	Untreated
Anderson	A1923XF	RXF	M	1.9	Untreated
Anderson	A203E3	E3	M	2.0	Untreated
Apex	AE1520	E3	M	1.5	F,I
Apex	AE1550	E3	PK	1.5	CMBV,SA
Apex	AE1720	E3	M	1.7	F,I
Apex	AE1940	E3	PK	1.9	F,I
Apex	AE2050	E3	PK	2.0	F,I
Asgrow	AG18XF1 §	RXF	R	1.8	ACi,IL
Asgrow	AG19XF3 §	RXF	R	1.9	ACi,IL
Asgrow	AG20XF4 §	RXF	R	2.0	ACi,IL
Dahlgren	7520XF	RXF	M	2.0	Treated
Dairyland	DSR-2055E	E3	M	2.0	Lum,Lu,IL
Dairyland	DSR-2111E	E3	PK	2.1	Lum,Lu,IL
Dairyland	DSR-2236E	E3	M	2.2	Lum,Lu,IL
Fortus	1502E	E3	M	1.5	AC, SU
Fortus	1895E	E3	PK	1.8	AC, SU
Fortus	2043E	E3	M	2.0	AC, SU
Fortus	2165E	E3	M	2.1	AC, SU
Genesis	G1560E	E3	R	1.5	EcTC
Genesis	G1590E	E3	PK	1.5	EcTC
Genesis	G1760E	E3	R	1.7	EcTC
Genesis	G1970E	E3	M	1.9	EcTC
Genesis	G1980E	E3	PK	1.9	EcTC
Genesis	G2090E	E3	PK	2.0	EcTC,SA
Genesis	G2180E	E3	M	2.1	EcTC,SA
Golden Harvest	GH1614E3	E3	PK	1.6	CMB-APX,SA
Golden Harvest	GH1875E3 §	E3	M	1.8	CMB-APX,SA
Golden Harvest	GH2004XF §	RXF	M	2.0	CMB-APX,SA
Golden Harvest	GH2292E3 §	E3	M	2.2	CMB-APX,SA
Jacobsen	J1873E3	E3	PK	1.8	F,I
Jacobsen	J1942E3	E3	PK	1.9	F,I
Jacobsen	J2223E3	E3	S	2.2	F,I
Pioneer	P14A12E §	E3	NA	1.4	Untreated
Pioneer	P20A48E §	E3	M	2.0	Untreated
Renk	RS155NXF	RXF	M	1.5	EcTC
Renk	RS194NXF	RXF	M	1.9	EcTC
Stine	17EE32 §	E3	M	1.7	TFX1,SA
Stine	20EG02 §	E3	M	2.0	TFX1,SA
Stine	22EG02 §	E3	M	2.2	TFX1,SA

Company/Brand	Brand/Product	Technology	SCN	RM	Seed Treat.
Titan Pro	TP 18E22	E3	PK	1.8	CMB-APX,SA
Xitavo	XO 1545E	E3	PK	1.5	PV,IL,OB,Rey
Xitavo	XO 1632E	E3	M	1.6	PV,IL,OB,Rey
Xitavo	XO 1822E	E3	M	1.8	PV,IL,OB,Rey
Xitavo	XO 2075E	E3	PK	2.0	PV,IL,OB,Rey
Xitavo	XO 2282E	E3	M	2.2	PV,IL,OB,Rey

Footnotes and Abbreviations Descriptions

Brand Footnotes

CK	Identifies a check product included in early- and full-season tests.
GC	Grower Comparison product included by FIRST when space permits.
§	United Soybean Board sponsored entry

Soybean Cyst Nematode (SCN) Resistance Rating

S	susceptible
MR	moderate resistance
R	resistant
n/a	info unavailable

Soybeans Technologies

E3	Enlist E3®
RXF	XtendFlex®

Soybeans Seed Treatments*

NA	Not Available
ACi,IL	Acceleron® Standard Insecticide-Fungicide, ILeVO
AC, SU	Acceleron standard+ StepUp
CMB-APX,SA	CruiserMaxx® APX with Saltro®
CMBV,SA	Cruisermaxx® Beans, Vibrance®, Saltro®
EcTC	Eclipse US Total Coverage Trio IM, N-Force
EcTC,SA	Eclipse US Total Coverage Trio IM, N-Force, Saltro®
F,I	Fungicide, Insecticide
Lum,Lu,IL	LumiGEN™, Lumisena™, ILeVO
PV,IL,OB,Rey	Poncho®/Votivo®, ILeVO, Obvius Plus, Relenya®
TFX1,SA	Stine MyYield, Saltro
Treated	Treated, unspecified
Untreated	No seed treatment

* Seed treatments may include unspecified plant health promoting components.