

Test by: Peterson Seed Testing LLC ,

## 2024 Soybeans Top 30 Harvest Report

South Dakota Southeast [SDSE] HARTFORD, SD  
Kenny Aylward, Blackford County, SD

**All-Season Test** Maturity Group **2.1 - 2.8**  
S2024SDSE03

**Top 30 of 30** For Gross Income  
(Sorted by Yield)  
Average of (3) Replications

**PREV. CROP/HERB:** Corn / Surestart, Laudis  
**SOIL DESCRIPTION:** Egan-Wentworth silty clay loam,  
well drained, non-irrigated  
**SOIL CONDITION:** very high P, very high K, 6.8 pH,  
6.9% OM, 20.7 CEC  
**TILLAGE/CULTIVATION:** Conventional W/O Fall Till  
**PEST MANAGEMENT:** Roundup, Liberty (2x),  
Dimethoate  
**Applied N-P-K (units):** 0-0-0  
**SEEDED - RATE - ROW:** May 29 140.0 /A 30" spacing  
**HARVESTED - STAND:** Oct 9 114.0 /A

### TEST COMMENTS:

*Saturated soil conditions delayed planting at this site until May 29th. Soil crusting thinned the stand slightly, but overall emergence was adequate for the conditions. June brought heavy rainfall and kept the plants from really taking off. Aphids were sprayed in late July. A dry finish to the growing season caused this crop to mature quickly. Plants stood well at harvest and were shorter than normal overall.*

Company/Brand	Product/Brand	Technol.†	RM	SCN Resist.	Yield Bu/A ↓	Moisture %	Lodging %	Stand (x 1000)	Gross Income \$/Acre	Rank
Golden Harvest	GH2313XF § ↗	RXF	2.3	M	<b>59.0</b>	8.4	1	113.3	596	1
Golden Harvest	GH2292E3 ↗	E3	2.2	M	<b>58.3</b>	8.3	1	114.3	589	2
Stine	25EG23 § ↗	E3	2.5	M	<b>57.7</b>	8.3	1	113.0	583	3
Fortus	2165E ↗	E3	2.1	M	<b>56.8</b>	8.3	1	115.0	574	4
Pioneer	P22A67E § ↗	E3	2.2	M	<b>56.8</b>	8.3	1	113.3	574	5
Fortus	2445E ↗	E3	2.4	M	55.5	8.3	1	114.3	561	6
Genesis	G2480E ↗	E3	2.4	M	55.3	8.3	1	115.0	559	7
Genesis	G2180E GC ↗	E3	2.1	M	55.1	8.3	1	113.7	557	8
Fortus	2775E ↗	E3	2.7	PK	55.1	8.4	1	115.0	557	9
Genesis	G2391E ↗	E3	2.3	M	54.7	8.3	1	112.7	552	10
Xitavo	XO 2832E ↗	E3	2.8	M	54.0	8.4	1	114.3	545	11
Xitavo	XO 2444E ↗	E3,ST	2.4	M	53.8	8.3	1	113.7	543	12
Pioneer	P21A53E § ↗	E3	2.1	M	53.8	8.2	1	113.3	543	13
Xitavo	XO 2075E ↗	E3	2.0	PK	53.3	8.4	1	115.0	538	14
Xitavo	XO 2625E ↗	E3	2.6	M	53.2	8.4	1	113.7	537	15
Stine	22EG02 § ↗	E3	2.2	M	52.8	8.3	1	114.0	533	16
Pioneer	P19A37E § ↗	E3	1.9	NA	52.2	8.2	1	113.7	527	17
Xitavo	XO 2305E ↗	E3	2.3	M	51.5	8.3	1	114.3	520	18
Xitavo	XO 2865E ↗	E3	2.8	M	50.6	8.5	1	115.0	511	19
Genesis	G2390E GC ↗	E3	2.3	PK	50.4	8.3	1	114.0	509	20
Asgrow	AG26XF4 § ↗	RXF	2.6	R	50.3	8.5	1	113.7	508	21
Stine	27EG22 § ↗	E3	2.7	PK	50.3	8.5	1	112.7	508	22
Asgrow	AG27XF3 § ↗	RXF	2.7	R	50.3	8.8	1	114.3	508	23
Genesis	G2790E ↗	E3	2.7	PK	50.2	8.6	1	113.7	507	24
Apex	AE2351 ↗	E3	2.3	M	50.0	8.3	1	114.3	505	25
Xitavo	XO 2735E ↗	E3	2.7	M	49.8	8.5	1	115.0	503	26
Golden Harvest	GH2745XF § ↗	RXF	2.7	M	49.0	8.5	1	114.3	495	27
Asgrow	AG24XF4 § ↗	RXF	2.4	R	48.5	8.3	1	113.7	490	28
Xitavo	XO 2282E ↗	E3	2.2	M	47.6	8.3	1	113.7	481	29
Golden Harvest	GH2775E3 § ↗	E3	2.7	M	46.8	8.6	1	113.7	473	30

*Payden Peterson*

Payden Peterson

payden.peterson@firstseedtests.com, (507) 461-2492

Averages = **52.7** **8.4** **1** **114.0** **533**

LSD (0.10) = 3.2 0.1 ns

LSD (0.25) = 1.7 0.1 ns

C.V. = 5.7

Historic yield: new site

**Yield & Income Factors:** Base Moisture = 13.0% Shrink = 1.3 Drying = \$0.00 Prices: GMO = \$10.10

Report Date: 10/11/2024

† See last page for abbreviation descriptions. Dark colored row identifies the check product found in early- and full-season tests. **Bold** yields are significantly above test average by LSD(0.10). **Italicized** brands exceed the grain moisture limit for this test. **ns** = column values not significantly different. ↗ Links to full product yield results at [www.firstseedtests.com](http://www.firstseedtests.com)

©2024, All rights reserved to Farmers' Independent Research of Seed Technologies, LLC.

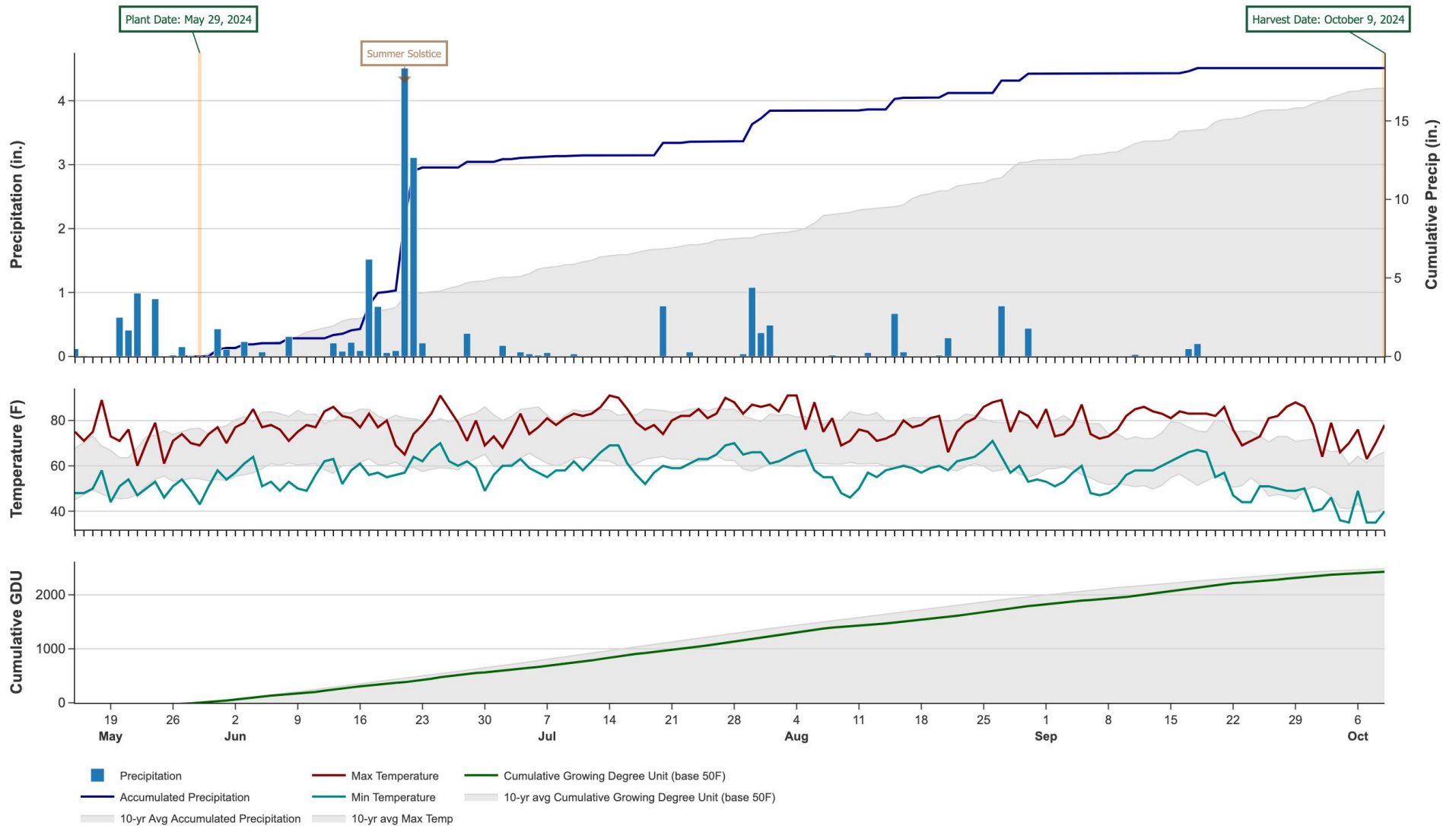
Additional reports available at [www.firstseedtests.com](http://www.firstseedtests.com)

# 2024 Soybeans - South Dakota Southeast [ SDSE ]

## Weather Conditions Summary at HARTFORD, SD

Weather Data Retrieved: 10/11/2024

Monthly Total	May*	Jun	Jul	Aug	Sep	Oct*	Total
Precip (in)   (Diff)	3.6   2.1 (+1.5)	12.0   4.5 (+7.5)	2.8   3.0 (-0.2)	2.9   4.8 (-1.9)	0.3   3.3 (-3.0)	0.0   1.3 (-1.3)	21.6   18.9 (+2.7)
GDU   Avg (Diff)	206   200 (+5)	532   620 (-88)	656   703 (-47)	589   626 (-37)	528   433 (+94)	90   70 (+19)	2601   2653 (-52)



\* First monthly total starts on the date 14 days prior to planting and final monthly total ends on the harvest date.

Note: Weather information from PRISM Climate Group. Data may be revised by the provider after retrieval. FIRST will not revise or update reports to reflect any weather data changes. For information purposes only.

## 2024 Soybeans - South Dakota Southeast [ SDSE ]

### All-Season Test Products (30 Total)

Company/Brand	Product/Brand	Technology	SCN	RM	Seed Treat.
Apex	AE2351	E3	M	2.3	CMBV
Asgrow	AG24XF4 §	RXF	R	2.4	ACi,IL
Asgrow	AG26XF4 §	RXF	R	2.6	ACi,IL
Asgrow	AG27XF3 §	RXF	R	2.7	ACi
Fortus	2165E	E3	M	2.1	AC, SU
Fortus	2445E	E3	M	2.4	AC, SU
Fortus	2775E	E3	PK	2.7	AC, SU
Genesis	G2180E GC	E3	M	2.1	CMBV,SA
Genesis	G2390E GC	E3	PK	2.3	CMBV,SA
Genesis	G2391E	E3	M	2.3	CMBV,SA
Genesis	G2480E	E3	M	2.4	EcTC,SA
Genesis	G2790E	E3	PK	2.7	EcTC,SA
Golden Harvest	GH2292E3	E3	M	2.2	CMB-APX,SA
Golden Harvest	GH2313XF §	RXF	M	2.3	CMB-APX,SA
Golden Harvest	GH2745XF §	RXF	M	2.7	CMB-APX,SA
Golden Harvest	GH2775E3 §	E3	M	2.7	CMB-APX,SA
Pioneer	P19A37E §	E3	NA	1.9	Untreated
Pioneer	P21A53E §	E3	M	2.1	Untreated
Pioneer	P22A67E §	E3	M	2.2	Untreated
Stine	22EG02 §	E3	M	2.2	TFX1,SA
Stine	25EG23 §	E3	M	2.5	TFX1,SA
Stine	27EG22 §	E3	PK	2.7	TFX1,SA
Xitavo	XO 2075E	E3	PK	2.0	Untreated
Xitavo	XO 2282E	E3	M	2.2	PV,IL,OB,Rey
Xitavo	XO 2305E	E3	M	2.3	PV,IL,OB,Rey
Xitavo	XO 2444E	E3,ST	M	2.4	PV,IL,OB,Rey
Xitavo	XO 2625E	E3	M	2.6	PV,IL,OB,Rey
Xitavo	XO 2735E	E3	M	2.7	PV,IL,OB,Rey
Xitavo	XO 2832E	E3	M	2.8	PV,IL,OB,Rey
Xitavo	XO 2865E	E3	M	2.8	PV,IL,OB,Rey

## Footnotes and Abbreviations Descriptions

### Brand Footnotes

---

CK	Identifies a check product included in early- and full-season tests.
GC	Grower Comparison product included by FIRST when space permits.
§	United Soybean Board sponsored entry

### Soybean Cyst Nematode (SCN) Resistance Source or Rating

Note: Source of SCN resistance used when available, otherwise older susceptibility ratings are reported.

M	PI 88788 (MR)
PK	Peking (R)
H	Hartwig (R)
B	Blend (PK + M)
MR	moderate resistance
R	resistant
S	susceptible
NA	info unavailable

### Soybeans Technologies

---

E3	Enlist E3®
RXF	XtendFlex®
ST	Sulfonylurea tolerant

---

### Soybeans Seed Treatments\*

---

NA	Not Available
ACi	Acceleron® Standard Insecticide-Fungicide
ACi,IL	Acceleron® Standard Insecticide-Fungicide, ILeVO
AC, SU	Acceleron standard+ StepUp
CMB-APX,SA	CruiserMaxx® APX with Saltro®
CMBV	CruiserMaxx® Beans, Vibrance®
CMBV,SA	Cruisermaxx® Beans, Vibrance®, Saltro®
EcTC,SA	Eclipse US Total Coverage Trio IM, N-Force, Saltro®
PV,IL,OB,Rey	Poncho®/Votivo®, ILeVO, Obvius Plus, Relenya®
TFX1,SA	Stine MyYield, Saltro
Untreated	No seed treatment

---

\* Seed treatments may include unspecified plant health promoting components.